

Domestic Uranium Production Report - Annual

Data for 2008

Report Date: May 21, 2009

Next Release Date: May 21, 2010

Drilling

U.S. uranium exploration drilling was 5,198 holes covering 2.5 million feet in 2008. Development drilling was 4,157 holes and 2.6 million feet. Combined, total uranium drilling was 9,355 holes covering 5.1 million feet. Expenditures for exploration activities were \$50 million in 2008, and \$82 million for drilling activities.

Mining

U.S. uranium mines produced 3.9 million pounds of uranium in 2008, 15 percent less than in 2007. Ten underground mines produced uranium during 2008, four more than during 2007. Six in-situ-leach mining operations produced uranium, one more than during 2007. Overall, there were 16 mines that operated during part or all of 2008.

Production and Shipments

Total production of U.S. uranium concentrate (yellowcake) in 2008 was 3.9 million pounds U_3O_8 , 14 percent below the 2007 level, from one U.S. mill (White Mesa Mill) and six in-situ-leach plants (Alta Mesa Project, Crow Butte Operation, Kingsville Dome, Rosita, Smith Ranch-Highland Operation, and Vasquez). Shipments of uranium concentrate from this mill and these in-situ leach plants were 4.1 million pounds in 2008, 2 percent above the 2007 level.

Facilities

At the end of 2008, there were four uranium mills located in the United States (with a total capacity of 6,150 short tons of ore per day). Only one mill was operating, with a capacity of 2,000 short tons of ore per day. Also, there were nine uranium in-situ-leach plants (with a total capacity of 12 million pounds U_3O_8 per year). Four in-situ-leach plants were operating, with a combined capacity of 8.5 million pounds U_3O_8 per year.

Employment

Total employment in the U.S. uranium production industry was 1,563 person-years for 2008, an increase of 27 percent from the 2007 total. Mining employment increased the most (48 percent). Uranium exploration, milling and processing employment rose 22 percent, while reclamation employment had little change from 2007 to 2008. Eight States (Arizona, Colorado, Nebraska, New Mexico, Texas, Utah, Washington and Wyoming) accounted for 97 percent of total employment in the uranium production industry.

Expenditures

Total expenditures for land, exploration, drilling, production, and reclamation were \$468 million in 2008, 39 percent more than in 2007. Expenditures on U.S. uranium production, including facility expenses, were the most at \$221 million in 2008. Uranium production expenditures increased 145 percent from 2007 to 2008. Expenditures for land were \$65 million, a 16 percent decrease compared with 2007.

Data for 2008

Report Date: May 21, 2009

Next Release Date: May 21, 2010

Table 1. U.S. Uranium Drilling Activities, 2003-2008

| Year | Exploration Drilling | | Development Drilling | | Exploration and Development Drilling | |
|------|----------------------|-----------------|----------------------|-----------------|--------------------------------------|-----------------|
| | Number of Holes | Feet (thousand) | Number of Holes | Feet (thousand) | Number of Holes | Feet (thousand) |
| 2003 | NA | NA | NA | NA | W | W |
| 2004 | W | W | W | W | 2,185 | 1,249 |
| 2005 | W | W | W | W | 3,143 | 1,668 |
| 2006 | 1,473 | 821 | 3,430 | 1,892 | 4,903 | 2,713 |
| 2007 | 4,351 | 2,200 | 4,996 | 2,946 | 9,347 | 5,146 |
| 2008 | 5,198 | 2,543 | 4,157 | 2,551 | 9,355 | 5,093 |

NA = Not available.

W = Data withheld to avoid disclosure of individual company data.

Note: Totals may not equal sum of components because of independent rounding.

Source: Energy Information Administration: Form EIA-851A, "Domestic Uranium Production Report" (2003-2008)

Data for 2008

Report Date: May 21, 2009

Next Release Date: May 21, 2010

Table 2. U.S. Uranium Mine Production and Number of Mines and Sources, 2003-2008

| Production / Mining Method | 2003 | 2004 | 2005 | 2006 | 2007 | 2008 |
|--|---------------|--------------|--------------|--------------|--------------|--------------|
| Underground | | | | | | |
| (estimated contained thousand pounds U ₃ O ₈) | W | W | W | W | W | W |
| Open Pit | | | | | | |
| (estimated contained thousand pounds U ₃ O ₈) | 0 | 0 | 0 | 0 | 0 | 0 |
| In Situ Leaching | | | | | | |
| (thousand pounds U ₃ O ₈) | W | W | 2,681 | 4,259 | W | W |
| Other ¹ | | | | | | |
| (thousand pounds U ₃ O ₈) | W | W | W | W | W | W |
| Total Mine Production | | | | | | |
| (thousand pounds U ₃ O ₈) | E2,200 | 2,452 | 3,045 | 4,692 | 4,541 | 3,879 |
| Number of Mines Operated | | | | | | |
| Underground | 1 | 2 | 4 | 5 | 6 | 10 |
| Open Pit | 0 | 0 | 0 | 0 | 0 | 0 |
| In Situ Leaching | 2 | 3 | 4 | 5 | 5 | 6 |
| Other Sources ¹ | 1 | 1 | 2 | 1 | 1 | 1 |
| Total Mines and Sources | 4 | 6 | 10 | 11 | 12 | 17 |

¹ Other includes, in various years, mine water, mill site cleanup and mill tailings, and well field restoration as sources of uranium.

E = Estimated data.

W = Data withheld to avoid disclosure of individual company data.

Notes: Totals may not equal sum of components because of independent rounding. Table does not include byproduct production and sources. The 2003 annual production amount was estimated by rounding to the nearest 200,000 pounds to avoid disclosure of individual company data.

Source: Energy Information Administration: Form EIA-851A, "Domestic Uranium Production Report" (2003-2008)

Data for 2008

Report Date: May 21, 2009

Next Release Date: May 21, 2010

Table 3. U.S. Uranium Concentrate Production and Shipments, 2003-2008

| U.S. Mills | 2003 | 2004 | 2005 | 2006 | 2007 | 2008 |
|---|----------|----------|----------|----------|----------|----------|
| Estimated contained U₃O₈ (thousand pounds) | | | | | | |
| Ore from Mines and Stockpiles Fed to Mills ¹ | 0 | W | W | W | 0 | W |
| Other Feed Materials ² | W | W | W | W | W | W |
| Total Mill Feed | W | W | W | W | W | W |
| Uranium Concentrate Produced at U.S. Mills | | | | | | |
| (thousand pounds U ₃ O ₈) | W | W | W | W | W | W |
| Uranium Concentrate Produced at U.S. In-Situ-Leach Plants | | | | | | |
| (thousand pounds U ₃ O ₈) | W | W | W | W | W | W |
| Total Uranium Concentrate Production | | | | | | |
| (thousand pounds U ₃ O ₈) | E2,000 | 2,282 | 2,689 | 4,106 | 4,534 | 3,902 |
| Total Uranium Concentrate Shipped From U.S. Mills and In-Situ-Leach Plants | | | | | | |
| (thousand pounds U ₃ O ₈) | E1,600 | 2,280 | 2,702 | 3,838 | 4,050 | 4,130 |

¹ Uranium ore "fed to mills" in any year can include: ore mined and shipped to a mill during the same year, ore that was mined during a prior year and later shipped from mine-site stockpiles, and/or ore obtained from drawdowns of stockpiles maintained at a mill site.

² Includes for various years uranium from mill cleanup, mine water, tailings water, and other materials.

E = Estimated data.

W = Data withheld to avoid disclosure of individual company data.

Notes: The 2003 annual amounts were estimated by rounding to the nearest 200,000 pounds to avoid disclosure of individual company data. Totals may not equal sum of components because of independent rounding.

Source: Energy Information Administration: Form EIA-851A, "Domestic Uranium Production Report" (2003-2008)

Data for 2008
Report Date: May 21, 2009
Next Release Date: May 21, 2010

Table 4. U.S. Uranium Mills by Owner, Capacity, and Operating Status at End of the Year, 2003-2008

| Mill Owner(s) | Mill Name | Milling Capacity ¹ (short tons of ore per day) | Operating Status at End of the Year | | | | | |
|---|--------------------------------|--|-------------------------------------|-------------|-------------------------------------|-------------------------------------|-------------------------------------|---------------------------------|
| | | | 2003 | 2004 | 2005 | 2006 | 2007 | 2008 |
| Cotter Corporation | Canon City Mill | 400 | Standby | Operating | Operating | Standby | Standby | Standby |
| Denison White Mesa L.L.C. | White Mesa Mill | 2,000 | Standby | Standby | Operating-Processing Alternate Feed | Operating-Processing Alternate Feed | Operating-Processing Alternate Feed | Operating |
| Energy Fuels Resources Corp. | Piñon Ridge Mill | 1,000 | - | - | - | - | - | Developing |
| Kennecott Uranium Company/Wyoming Coal Resource Company | Sweetwater Uranium Project | 3,000 | Standby | Standby | Standby | Standby | Standby | Standby |
| Uranium One Utah, Inc. | Shootaring Canyon Uranium Mill | 750 | Reclamation | Reclamation | Reclamation | Standby | Changing License To Operational | Changing License To Operational |
| Total Milling Capacity: | | 7,150 | | | | | | |

¹ Milling capacity based on most recent report.

- = No data reported.

Note: An operating status of "operating" usually indicates the mill was producing uranium concentrate at the end of the year.

Source: Energy Information Administration: Form EIA-851A, "Domestic Uranium Production Report" (2003-2008)

Data for 2008
Report Date: May 21, 2009
Next Release Date: May 20, 2010

Table 5. U.S. Uranium In-Situ-Leach Plants by Owner, Capacity, and Operating Status at End of the Year, 2003-2008

| In-Situ-Leach Plant Owner | In-Situ-Leach Plant Name | Production Capacity ¹ (pounds U ₃ O ₈ per year) | Operating Status at End of the Year | | | | | |
|--|--------------------------------|---|-------------------------------------|----------------------------------|----------------------------------|----------------------------------|----------------------------------|----------------------------------|
| | | | 2003 | 2004 | 2005 | 2006 | 2007 | 2008 |
| COGEMA Mining, Inc. | Christensen Ranch | 650,000 | Reclamation | Reclamation | Reclamation | Reclamation | Changing License To Operational | Standby |
| COGEMA Mining, Inc. | Irigaray Ranch | - | Reclamation | Reclamation | Reclamation | Reclamation | Inactive | Standby |
| COGEMA Mining, Inc. | Texas Operations | - | Reclamation | Reclamation | Reclamation | Reclamation | Reclamation | Reclamation |
| Cameco Corporation | Crow Butte Operation | 1,000,000 | Producing | Producing | Operating | Operating | Operating | Operating |
| HRI, Inc. | Church Rock | 1,000,000 | Permitted And Licensed | Permitted And Licensed | Permitted And Licensed | Partially Permitted And Licensed | Partially Permitted And Licensed | Partially Permitted And Licensed |
| HRI, Inc. | Crownpoint | 1,000,000 | Partially Permitted And Licensed | Partially Permitted And Licensed | Partially Permitted And Licensed | Partially Permitted And Licensed | Partially Permitted And Licensed | Partially Permitted And Licensed |
| Lost Creek ISR LLC | Lost Creek Project | 2,000,000 | - | - | - | - | - | Developing |
| Mestena Uranium LLC | Alta Mesa Project | 1,000,000 | Development | Pending | Operational | Operational | Producing | Producing |
| Power Resources, Inc. dba Cameco Resources | Smith Ranch-Highland Operation | 5,500,000 | Producing | Producing | Operating | Operating | Operating | Operating |
| Powertech Uranium Corp. | Centennial Project | - | - | - | - | - | - | Undeveloped |
| Powertech Uranium Corp. | Dewey Burdock Project | - | - | - | - | - | - | Undeveloped |
| South Texas Mining Venture, LLP | Hobson ISR Plant | 1,000,000 | Close Indefinitely | Close Indefinitely | Standby | Standby | Under Construction | Permitted And Licensed |
| South Texas Mining Venture, LLP | La Palangana | 1,000,000 | - | - | - | Developing | Partially Permitted And Licensed | Partially Permitted And Licensed |
| URI, Inc. | Kingsville Dome | 1,000,000 | Standby | Standby | Standby | Operational | Producing | Producing |
| URI, Inc. | Rosita | 1,000,000 | Depleted | Depleted | Standby | Standby | Standby | Standby |
| URI, Inc. | Vasquez | 800,000 | Partially Developed | Producing | Producing | Producing | Producing | Restoration |
| Uranerz Energy Corporation | Nichols Ranch ISR Project | - | - | - | - | - | - | Developing |
| Uranium Energy Corporation | Goliad ISR Uranium Project | - | - | - | - | - | - | Partially Permitted And Licensed |
| Uranium Energy Corporation | Nichols Project | - | - | - | - | - | - | Developing |
| Uranium One, Inc. | Jab and Antelope | 2,000,000 | - | - | - | - | - | Developing |
| Uranium One, Inc. | Moore Ranch | 2,000,000 | - | - | - | - | - | Developing |
| Total Production Capacity: | | 20,950,000 | | | | | | |

¹ Capacity based on most recent report

- = No data reported.

Note: An operating status of "operating" and "operational" usually indicates the in-situ-leach plant was producing uranium concentrate at the end of the year.

Source: Energy Information Administration: Form EIA-851A, "Domestic Uranium Production Report" (2003-2008)

Data for 2008

Report Date: May 21, 2009

Next Release Date: May 21, 2010

**Table 6. Employment in the U.S. Uranium Production Industry by Category, 2003-2008
(Person-Years)**

| Year | Employment Categories | | | | | |
|------|-----------------------|--------|---------|------------|-------------|-------|
| | Exploration | Mining | Milling | Processing | Reclamation | Total |
| 2003 | W | W | W | W | 117 | 321 |
| 2004 | 18 | 108 | W | W | 121 | 420 |
| 2005 | 79 | 149 | 142 | 154 | 124 | 648 |
| 2006 | 188 | 121 | W | W | 155 | 755 |
| 2007 | 375 | 378 | 107 | 216 | 155 | 1,231 |
| 2008 | 457 | 558 | W | W | 154 | 1,563 |

W = Data withheld to avoid disclosure of individual company data.

Note: Totals may not equal sum of components because of independent rounding.

Source: Energy Information Administration: Form EIA-851A, "Domestic Uranium Production Report" (2003-2008)

Data for 2008

Report Date: May 21, 2009

Next Release Date: May 21, 2010

**Table 7. Employment in the U.S. Uranium Production Industry by State, 2003-2008
(Person-Years)**

| State(s) | 2003 | 2004 | 2005 | 2006 | 2007 | 2008 |
|--|------------|------------|------------|------------|--------------|--------------|
| Wyoming | 134 | 139 | 181 | 195 | 245 | 301 |
| Colorado and Texas | 48 | 140 | 269 | 263 | 557 | 696 |
| Nebraska and New Mexico | 92 | 102 | 123 | 160 | 149 | 160 |
| Arizona, Utah and Washington | 47 | 40 | 75 | 120 | 245 | 360 |
| Alaska, Michigan, Nevada, and South Dakota | 0 | 0 | 0 | 16 | 25 | 30 |
| Others | 0 | 0 | 0 | 0 | 9 | 17 |
| Total | 321 | 420 | 648 | 755 | 1,231 | 1,563 |

Notes: Totals may not equal sum of components because of independent rounding. Others include Montana, North Dakota, Oklahoma and Virginia.

Source: Energy Information Administration: Form EIA-851A, "Domestic Uranium Production Report" (2003-2008)

Data for 2008

Report Date: May 21, 2009

Next Release Date: May 21, 2010

Table 8. U.S. Uranium Expenditures, 2003-2008
(Million Dollars)

| Year | Drilling | Production | Land and Other: | | | | Total Expenditures |
|------|----------|------------|-----------------------|------|-------------|-------------|--------------------|
| | | | Total Land and Other: | Land | Exploration | Reclamation | |
| 2003 | W | W | 31.3 | NA | NA | NA | W |
| 2004 | 10.6 | 27.8 | 48.4 | NA | NA | NA | 86.9 |
| 2005 | 18.1 | 58.2 | 59.7 | NA | NA | NA | 136.0 |
| 2006 | 40.1 | 65.9 | 115.2 | 41.0 | 23.3 | 50.9 | 221.2 |
| 2007 | 67.5 | 90.4 | 178.2 | 77.7 | 50.3 | 50.2 | 336.2 |
| 2008 | 81.9 | 221.2 | 164.4 | 65.2 | 50.2 | 49.1 | 467.6 |

Drilling: All expenditures directly associated with exploration and development drilling.

Production: All expenditures for mining, milling, processing of uranium, and facility expense.

Land and Other: All expenditures for: land; geological research; geochemical, and geophysical surveys; costs incurred by field personnel in the course of exploration, reclamation and restoration work; and overhead and administrative charges directly associated with supervising and supporting field activities.

NA = Not available.

W = Data withheld to avoid disclosure of individual company data.

Notes: Expenditures are in nominal U.S. dollars. Totals may not equal sum of components because of independent rounding.

Source: Energy Information Administration: Form EIA-851A, "Domestic Uranium Production Report" (2003-2008)

Data for 2008
Report Date: May 21, 2009
Next Release Date: May 21, 2010

Table 9. Summary Production Statistics of the U.S. Uranium Industry, 1993-2008

| Items | 1993 | 1994 | 1995 | 1996 | 1997 | 1998 | 1999 | 2000 | 2001 | 2002 | E2003 | 2004 | 2005 | 2006 | 2007 | 2008 |
|--|------|------|-------|-------|-------|-------|------|------|------|------|-------|------|------|------|-------|-------|
| Exploration and Development | | | | | | | | | | | | | | | | |
| Surface Drilling (million feet) | 1.1 | 0.7 | 1.3 | 3.0 | 4.9 | 4.6 | 2.5 | 1.0 | 0.7 | W | W | 1.2 | 1.7 | 2.7 | 5.1 | 5.1 |
| Drilling Expenditures (million dollars) ¹ | 5.7 | 1.1 | 2.6 | 7.2 | 20.0 | 18.1 | 7.9 | 5.6 | 2.7 | W | W | 10.6 | 18.1 | 40.1 | 67.5 | 81.9 |
| Mine Production of Uranium | | | | | | | | | | | | | | | | |
| (million pounds U ₃ O ₈) | 2.1 | 2.5 | 3.5 | 4.7 | 4.7 | 4.8 | 4.5 | 3.1 | 2.6 | 2.4 | 2.2 | 2.5 | 3.0 | 4.7 | 4.5 | 3.9 |
| Uranium Concentrate Production | | | | | | | | | | | | | | | | |
| (million pounds U ₃ O ₈) | 3.1 | 3.4 | 6.0 | 6.3 | 5.6 | 4.7 | 4.6 | 4.0 | 2.6 | 2.3 | 2.0 | 2.3 | 2.7 | 4.1 | 4.5 | 3.9 |
| Uranium Concentrate Shipments | | | | | | | | | | | | | | | | |
| (million pounds U ₃ O ₈) | 3.4 | 6.3 | 5.5 | 6.0 | 5.8 | 4.9 | 5.5 | 3.2 | 2.2 | 3.8 | 1.6 | 2.3 | 2.7 | 3.8 | 4.0 | 4.1 |
| Employment | | | | | | | | | | | | | | | | |
| (person-years) | 871 | 980 | 1,107 | 1,118 | 1,097 | 1,120 | 848 | 627 | 423 | 426 | 321 | 420 | 648 | 755 | 1,231 | 1,563 |

¹ Expenditures are in nominal U.S. dollars.

E = Estimated data.

W = Data withheld to avoid disclosure of individual company data.

Note: The 2003 annual production and shipment amounts were estimated by rounding to the nearest 200,000 pounds to avoid disclosure of individual company data.

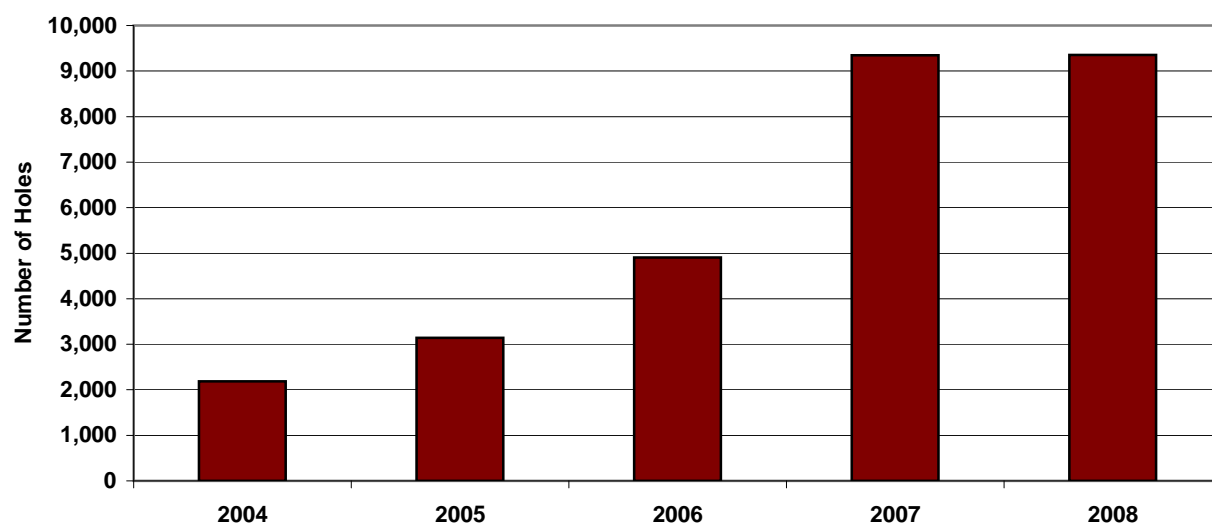
Source: Energy Information Administration: 1993-2002-Uranium Industry Annual 2002 (May 2003), Table H1 and Table 2. 2003-2008-Form EIA-851A, "Domestic Uranium Production Report" (2003-2008).

Data for 2008

Report Date: May 21, 2009

Next Release Date: May 21, 2010

Figure 1. U.S. Uranium Drilling by Number of Holes, 2004-2008



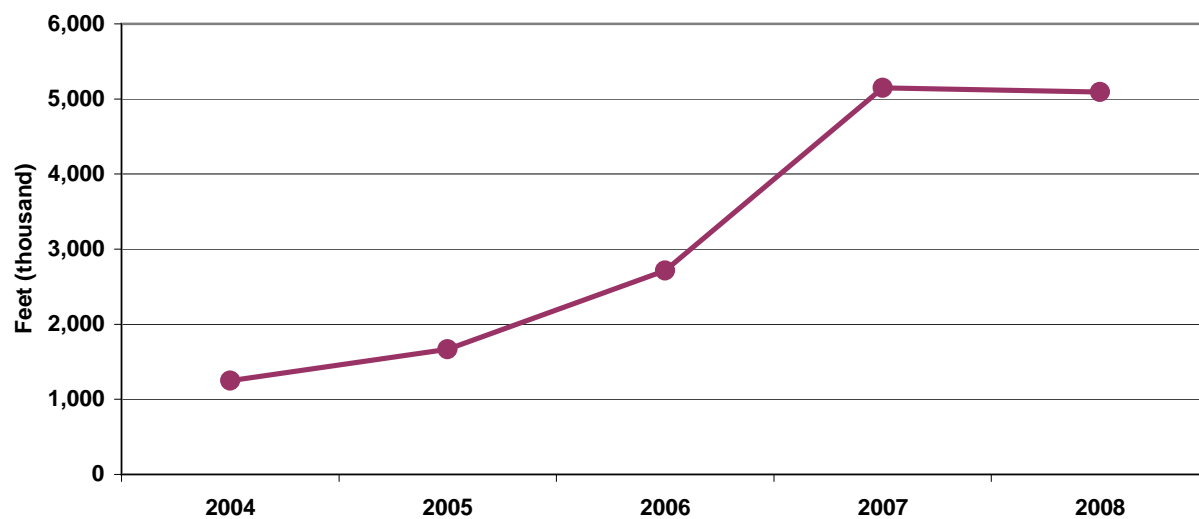
Source: Energy Information Administration: Form EIA-851A, "Domestic Uranium Production Report" (2004-2008)

Data for 2008

Report Date: May 21, 2009

Next Release Date: May 21, 2010

Figure 2. U.S. Uranium Drilling in Footage, 2004-2008



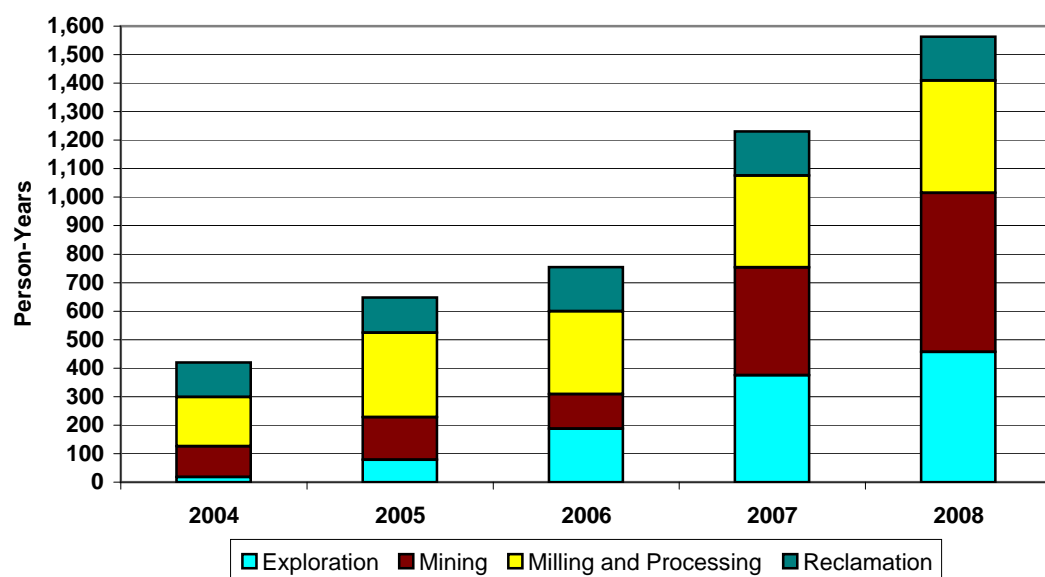
Source: Energy Information Administration: Form EIA-851A, "Domestic Uranium Production Report"
(2004-2008)

Data for 2008

Report Date: May 21, 2009

Next Release Date: May 21, 2010

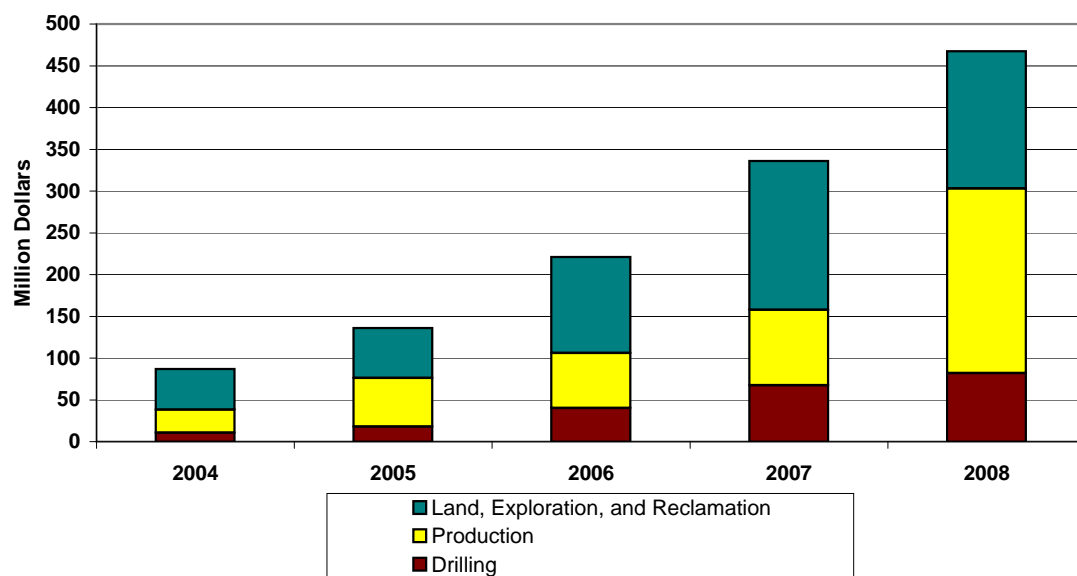
Figure 3. Employment in the U.S. Uranium Production Industry by Category, 2004-2008



Source: Energy Information Administration: Form EIA-851A, "Domestic Uranium Production Report" (2004-2008)

Data for 2008
Report Date: May 21, 2009
Next Release Date: May 21, 2010

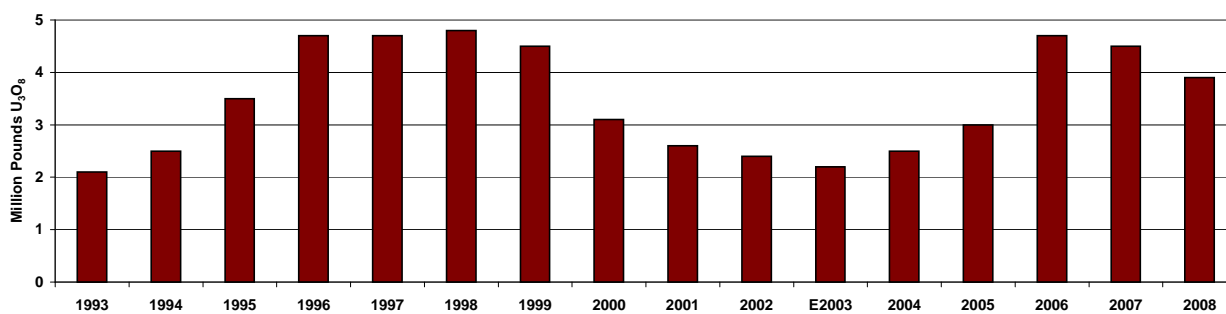
Figure 4. U.S. Uranium Expenditures, 2004-2008



Source: Energy Information Administration: Form EIA-851A, "Domestic Uranium Production Report" (2004-2008)

Data for 2008
Report Date: May 21, 2009
Next Release Date: May 21, 2010

Figure 5. U.S. Mine Production of Uranium, 1993-2008



E = Estimated data.

Sources: Energy Information Administration: 1993-2002-Uranium Industry Annual 2002 (May 2003), Table H1 and Table 2. 2003-2008-Form EIA-851A, "Domestic Uranium Production Report" (2003-2008)

Data for 2008
Report Date: May 21, 2009
Next Release Date: May 21, 2010

Figure 6. U.S. Uranium Concentrate Production and Shipments, 1993-2008

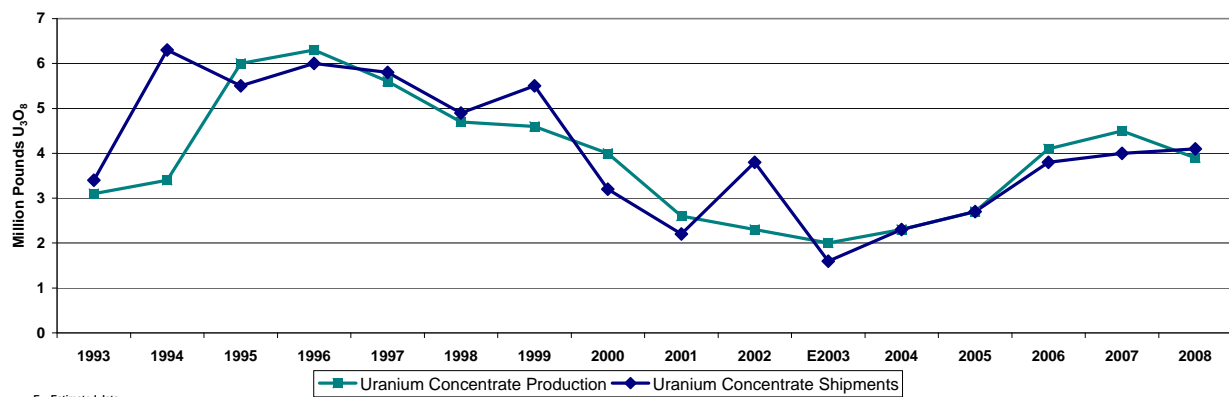
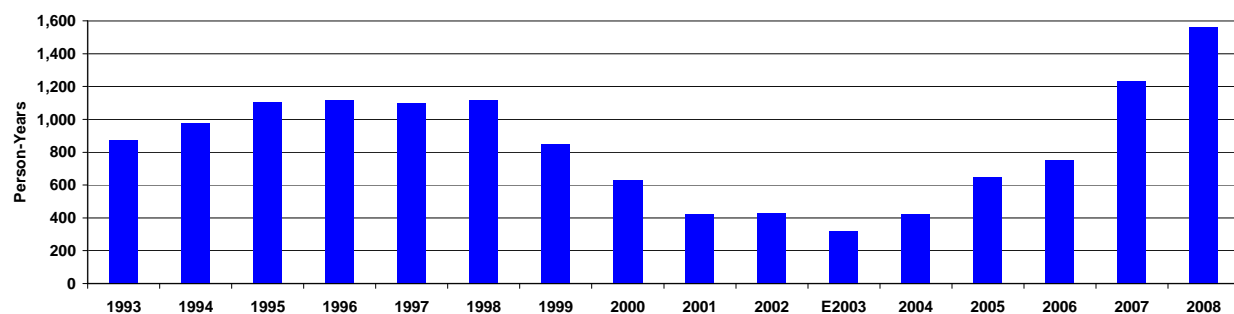


Figure 7. Employment in the U.S. Production Industry, 1993-2008



Sources: Energy Information Administration: 1993-2002-Uranium Industry Annual 2002 (May 2003), Table H1 and Table 2. 2003-2008-Form EIA-851A, "Domestic Uranium Production Report" (2003-2008)