



SOUTH DAKOTA

2014 EIA reports and publications

SOUTH DAKOTA ENERGY HIGHLIGHTS:

88% of South Dakota's land area is suitable for wind resource development.

South Dakota ranked fifth in the nation in ethanol production capacity in 2014.

65% of South Dakota's total net electricity generation in 2013 was fueled by wind and hydroelectric power.

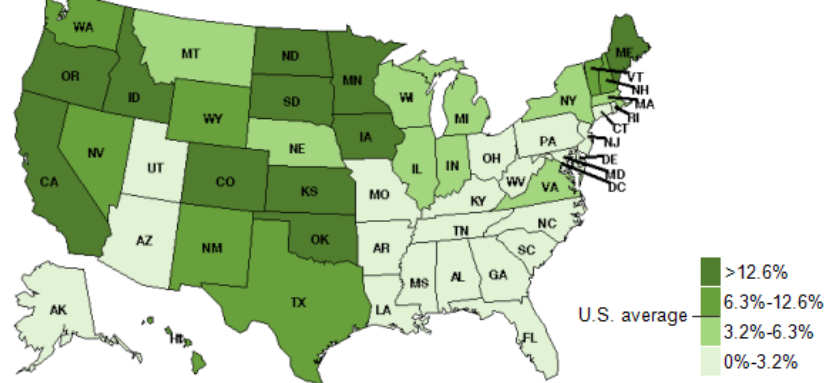
RENEWABLES

APRIL 18, 2014

Eleven states generated electricity from nonhydro renewables at double U.S. average

- South Dakota produced more than 25% of its net electricity from wind generation in 2013.

Percent of electric generation from nonhydro renewable sources (2013)



EMISSIONS

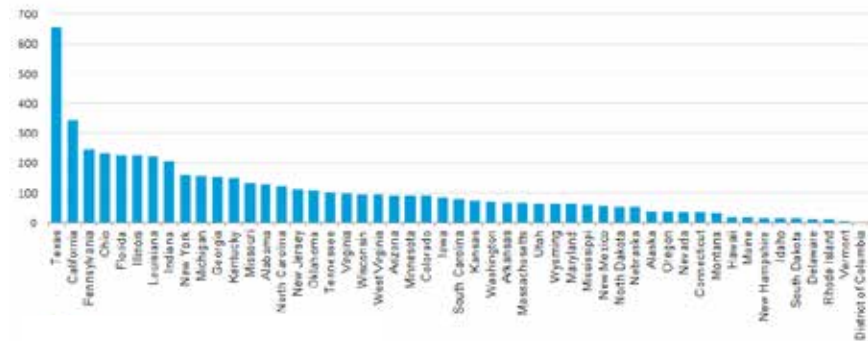
AUGUST 21, 2014

State-Level Energy-Related Carbon Dioxide Emissions, 2000-2011

- South Dakota had the fifth-lowest energy-related carbon emissions in the country in 2011.

Figure 1. Energy-related carbon dioxide emissions by state, 2011

million metric tons carbon dioxide



EIA'S SOUTH DAKOTA FLICKR ALBUM

<http://bit.ly/1B6B38i>

SOUTH DAKOTA STATE PROFILE

<http://www.eia.gov/state/?sid=SD>

TRIBAL AFFAIRS

JUNE 19, 2014

Sales of Fossil Fuels Produced from Federal and Indian Lands, FY 2003 through FY 2013

- Indian lands are primarily in the western United States, with concentrations in South Dakota and other states. Overall fossil fuel production from federal lands generally declined between fiscal year (FY) 2003 and FY 2013, down 21% in FY 2013 compared with FY 2003.

NEW TOOLS RELEASED IN 2014

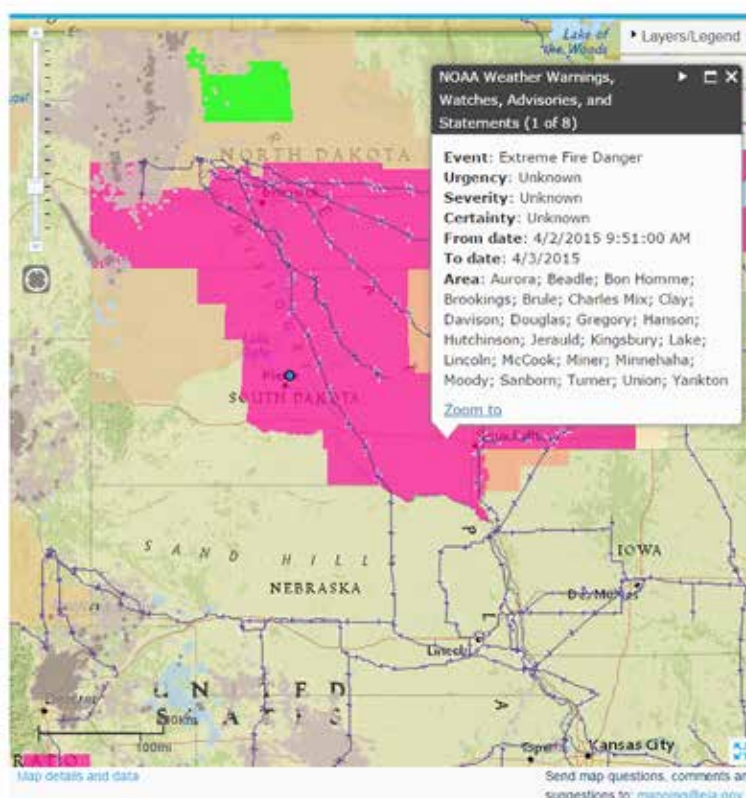
EIA's South Dakota Flickr album

- The [South Dakota album on EIA's Flickr page](#) provides users with access to images related to South Dakota's energy production, consumption, prices, and other topics covered by EIA.



Energy Disruptions Page

- EIA provides real-time storm information on an [interactive map](#) that shows key layers of energy infrastructure that could be impacted by significant weather events.



Flood Vulnerability Assessment Map

- EIA's [Flood Vulnerability Assessment Map](#) combines EIA's U.S. Energy Mapping System with flood hazard information from the Federal Emergency Management Agency (FEMA) to help state, county, city, and private sector planners determine if a specific area or energy asset is vulnerable to flooding caused by hurricanes, overflowing rivers, flash floods, and other wet-weather events.

FOLLOW US!

