



LOUISIANA

2014 EIA reports and publications

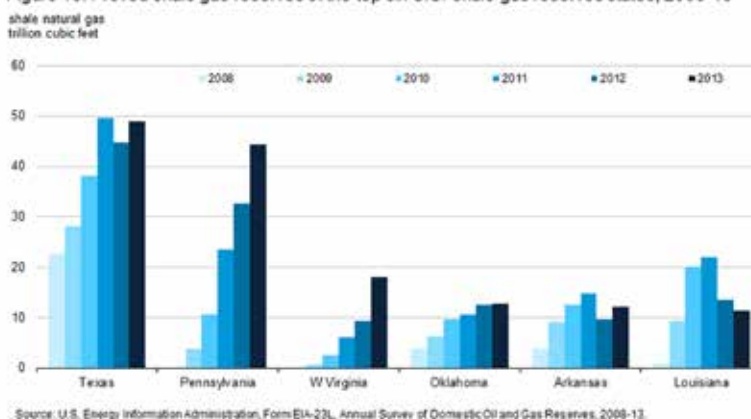
CRUDE OIL AND NATURAL GAS RESERVES

DECEMBER 4, 2014

U.S. Crude Oil and Natural Gas Proved Reserves, 2013

- Louisiana had the sixth-largest shale gas reserves of any state in 2013.
- In 2013, Louisiana experienced the largest estimated decline in natural gas production of any state, experiencing a decrease of 0.7 trillion cubic feet (Tcf), or 23%.

Figure 13. Proved shale gas reserves of the top six U.S. shale gas reserves states, 2008-13



NATURAL GAS

NOVEMBER 25, 2014

Shale gas provided the largest share of U.S. natural gas production in 2013

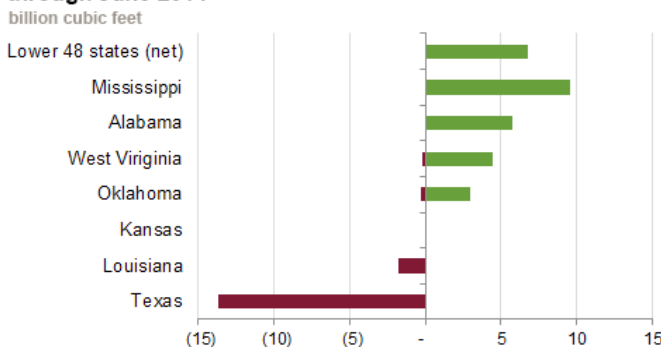
- Louisiana produced a minimal amount of shale gas in 2007, but it produced 4 billion cubic feet per day (Bcf/d) in 2013. The growth in shale gas production came from the Haynesville shale play.

SEPTEMBER 3, 2014

Natural Gas Weekly Update–September 2014

- Two salt facilities in Louisiana (Egan and Boardwalk Storage) had a reduction of combined working natural gas capacity close to 2 billion cubic feet (Bcf) in 2014.
- Two salt facility expansions in Louisiana and Texas were slated for completion in 2014. These could provide 18 Bcf of new working gas capacity.

Change in working gas design capacity December 2013 through June 2014



LOUISIANA ENERGY HIGHLIGHTS:

Louisiana was ninth in the nation in crude oil production in December 2014 with 5,703 barrels produced.

Louisiana was second only to Texas as of January 2014 in both total and operating refinery capacity.

EIA'S LOUISIANA FLICKR ALBUM

<http://bit.ly/1Gk5IZK>

LOUISIANA STATE PROFILE

<http://www.eia.gov/state/?sid=LA>

NEW TOOLS RELEASED IN 2014:

EIA's Louisiana Flickr album

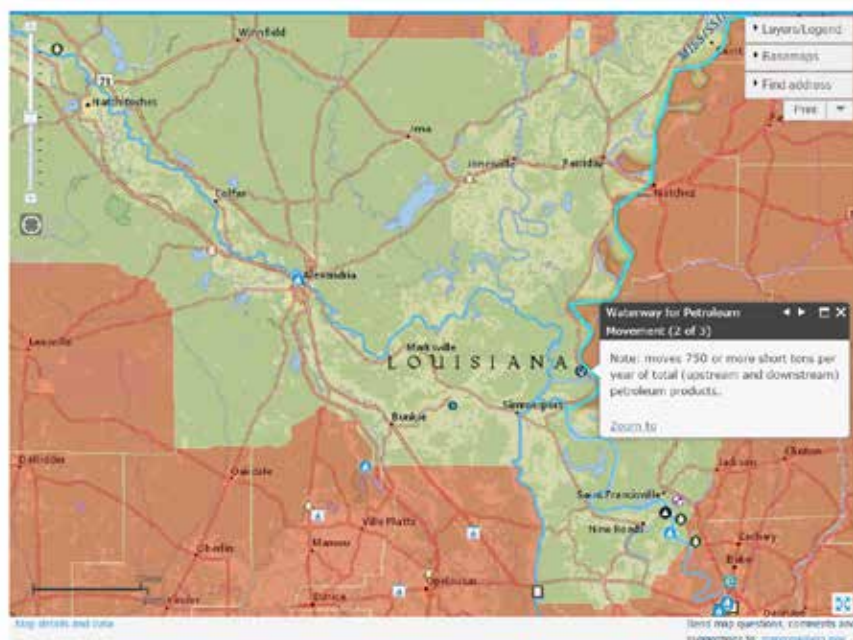
- The [Louisiana album on EIA's Flickr page](#) provides access to images related to Louisiana's energy production, consumption, prices, and other topics covered by EIA.



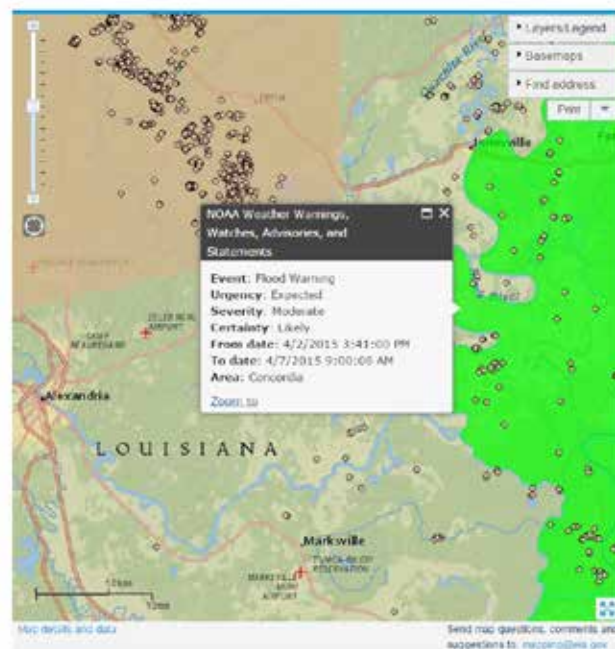
Flood Vulnerability Assessment Map

- EIA's [Flood Vulnerability Assessment Map](#) combines EIA's U.S. Energy Mapping System with flood hazard information from the Federal Emergency Management Agency (FEMA) to help state, county, city, and private sector planners determine if a specific area or energy asset is vulnerable to flooding caused by hurricanes, overflowing rivers, flash floods, and other wet-weather events.

Energy Infrastructure with FEMA National Flood Hazard



Energy Infrastructure with Real-time Storm Information



Energy Disruptions Mapping Tool

- EIA provides real-time storm information on an [interactive map](#) that shows key layers of energy infrastructure that could be impacted by significant weather events.

FOLLOW US!

