

Summary Statistics

Table 1. Crude oil prices

dollars per barrel

Year month	Domestic first purchase prices	Average F.O.B. [a] cost of crude oil imports [b]	Average landed cost of crude oil imports [b]	Refiner acquisition cost of crude oil		
				Domestic	Imported	Composite
1997 average	17.23	16.94	18.11	19.61	18.53	19.04
1998 average	10.87	10.76	11.84	13.18	12.04	12.52
1999 average	15.56	16.47	17.23	17.90	17.26	17.51
2000 average	26.72	26.27	27.53	29.11	27.70	28.26
2001 average	21.84	20.46	21.82	24.33	22.00	22.95
2002 average	22.51	22.63	23.91	24.65	23.71	24.10
2003 average	27.56	25.86	27.69	29.82	27.71	28.53
2004 average	36.77	33.75	36.07	38.97	35.90	36.98
2005 average	50.28	47.60	49.29	52.94	48.86	50.24
2006 average	59.69	57.03	59.11	62.62	59.02	60.24
2007 average	66.52	66.36	67.97	69.65	67.04	67.94
2008 average	94.04	90.32	93.33	98.47	92.77	94.74
2009 average	56.35	57.78	60.23	59.49	59.17	59.29
2010 average	74.71	74.19	76.50	78.01	75.86	76.69
2011 average	95.73	101.66	102.92	100.71	102.63	101.87
2012 average	94.52	99.78	101.00	100.72	101.09	100.93
2013 average	95.99	96.56	96.99	102.91	98.11	100.49
2014 average	87.39	85.65	88.16	94.05	89.56	92.02
2015 average	44.39	41.91	45.38	49.94	46.38	48.39
2016 average	38.29	36.37	38.56	42.41	38.75	40.66
2017						
January	48.19	44.62	47.05	51.81	48.12	49.99
February	49.41	45.91	48.08	53.15	49.38	51.24
March	46.39	44.09	46.26	50.60	46.53	48.65
April	47.23	43.60	46.00	51.34	47.47	49.47
May	45.19	43.92	46.15	49.58	47.21	48.47
June	42.17	41.34	43.85	46.26	44.03	45.25
July	43.42	42.09	44.82	47.59	44.76	46.27
August	44.96	44.18	46.93	48.76	47.62	48.22
September	47.17	46.50	49.80	51.07	50.46	50.78
October	49.12	47.22	51.11	53.71	51.40	52.67
November	55.19	52.11	56.10	58.92	56.30	57.75
December	56.98	53.68	56.96	61.10	57.44	59.53
2017 average	48.05	45.58	48.50	52.05	49.12	50.68
2018						
January	62.25	55.73	R58.25	66.08	R59.71	R63.25
February	R61.18	53.42	R56.76	64.68	R58.03	R61.74
March	60.68	53.35	56.32	64.03	R56.82	R60.81
April	63.50	R58.56	R60.62	67.14	R61.24	R64.41
May	66.16	62.95	65.15	R71.29	R65.89	R68.91
June	62.80	63.09	65.48	R69.63	R66.82	R68.35
July	67.00	62.35	R65.44	R73.33	R66.62	R70.29
August	62.64	R61.41	R64.16	69.45	65.48	67.68
September	R63.54	61.56	63.69	R71.09	R66.70	R69.29
October	65.18	R60.23	R61.78	R73.07	R67.79	R70.99
November	55.65	R44.66	R47.16	62.47	54.40	59.01
December	R47.63	36.91	R39.14	53.25	42.80	48.83
2018 average	R61.40	56.31	R58.89	R67.05	60.95	R64.38
2019						
January	47.85	R48.72	R49.25	53.86	49.57	52.11
February	R52.51	R53.67	R55.40	R57.89	R56.50	R57.35
March	57.47	56.48	58.24	R61.41	R61.20	R61.33
April [c]	NA	NA	NA	E66.52	E65.71	E66.15

NA = Not available.

E = Estimated data.

R = Revised data.

[a] Free on Board. See Glossary.

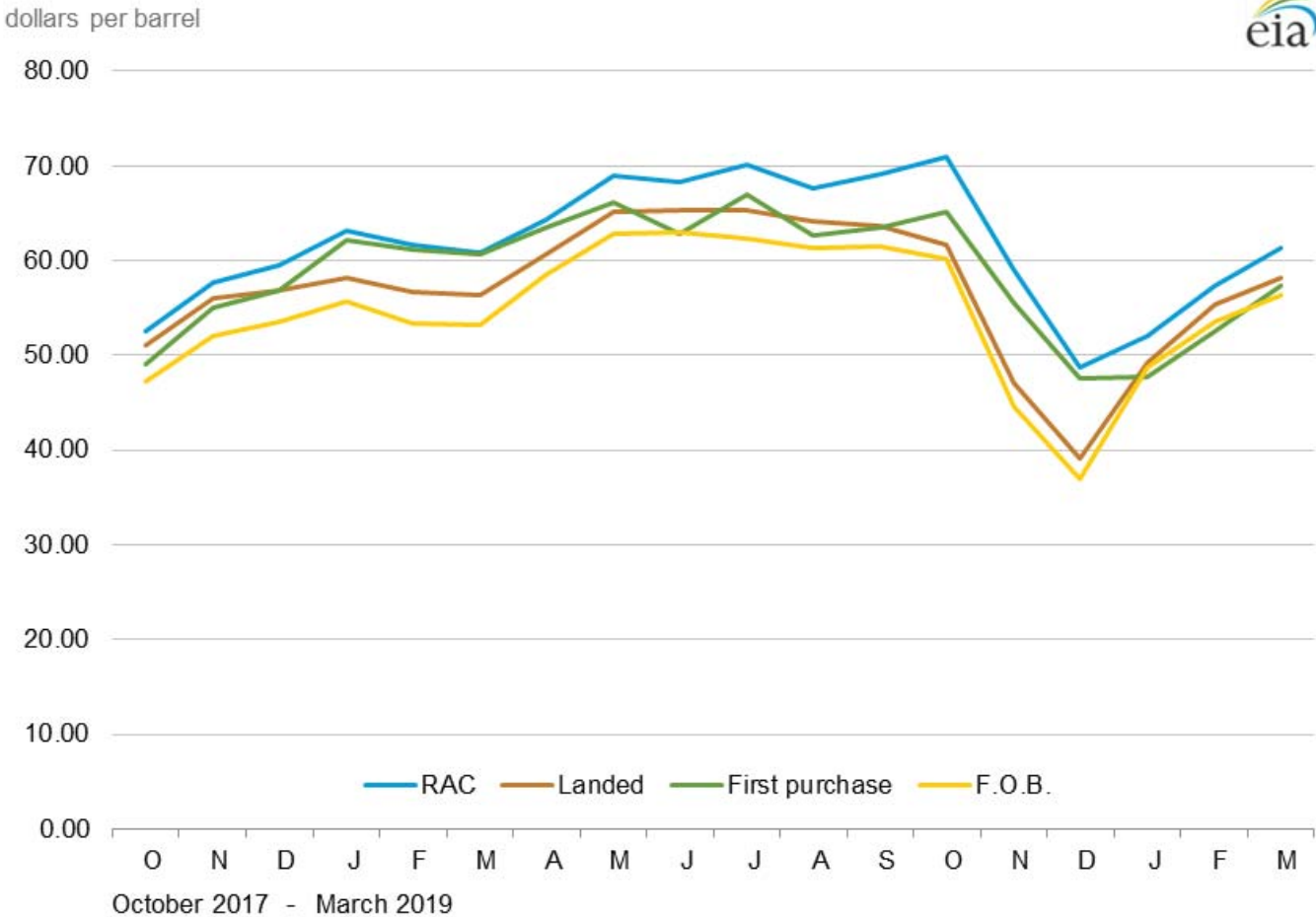
[b] Values reflect the month of acquisition, which can be the month of loading, the month of landing, or sometime between those events. Prices for crude oil can be determined at a time other than the acquisition date. See the Explanatory Notes section.

[c] Data are initial estimates calculated using regression models based on past and present values, spot prices, and other internally computed data. For an explanation of estimation methodology, see the Preface.

Notes: - In November 2018, a new crude stream was added and a selected crude stream was deleted for North Dakota. In January 2004, new crude streams were added and selected crude streams were discontinued for California, Gulf Coast, Oklahoma, and Texas. - Values for Domestic First Purchase Price and Refiner Acquisition Cost for the current two months, and for average F.O.B. and average landed costs, for the current three months are preliminary. Values shown for previous months may be revised. Data through 2018 are final.

Sources: Domestic first purchase prices -- See source from Table 18. Crude oil imports costs -- See Sources from Table 21. Refiner acquisition costs -- U.S. Energy Information Administration, Form EIA-14, Refiners' Monthly Cost Report.

Figure 1. Crude oil prices



Sources: U.S. Energy Information Administration, Form EIA-182, "Domestic Crude Oil First Purchase Report"; Form EIA-856, "Monthly Foreign Crude Oil Acquisition Report"; and Form EIA-14, "Refiners' Monthly Cost Report."
 Note: RAC stands for refiner acquisition cost.

Table 1A. Refiner acquisition cost of crude oil by PAD Districts

dollars per barrel

Year month	United States			PAD District 1			PAD District 2		
	Domestic	Imported	Composite	Domestic	Imported	Composite	Domestic	Imported	Composite
2004	38.97	35.90	36.98	40.75	38.29	38.34	40.80	35.63	38.38
2005	52.94	48.86	50.24	56.89	53.29	53.35	54.57	46.11	50.75
2006	62.62	59.02	60.24	66.92	63.53	63.60	63.66	55.19	59.70
2007	69.65	67.04	67.94	70.62	72.48	72.44	71.10	62.17	66.90
2008	98.47	92.77	94.74	100.30	96.90	96.97	100.98	88.45	94.93
2009	59.49	59.17	59.29	59.64	61.68	61.63	60.00	57.00	58.64
2010	78.01	75.86	76.69	75.90	80.03	79.91	78.85	72.24	75.92
2011	100.71	102.63	101.87	98.88	111.53	111.01	96.81	89.15	93.18
2012	100.72	101.09	100.93	104.45	112.27	111.50	95.04	83.90	89.44
2013	102.91	98.11	100.49	106.98	106.74	106.80	100.63	85.43	93.26
2014	94.05	89.56	92.02	96.95	96.51	96.70	93.08	81.66	87.51
2015	49.94	46.38	48.39	52.60	50.40	51.37	49.33	42.70	46.13
2016	42.41	38.75	40.66	44.58	42.54	43.00	43.76	36.19	39.95
2017									
January	51.81	48.12	49.99	55.35	52.87	53.34	52.83	44.53	48.26
February	53.15	49.38	51.24	55.90	52.80	53.29	53.56	46.04	49.59
March	50.60	46.53	48.65	55.85	51.98	52.62	50.84	42.91	46.64
April	51.34	47.47	49.47	54.99	51.26	51.64	51.93	44.10	48.06
May	49.58	47.21	48.47	54.64	50.66	51.17	49.72	44.65	47.27
June	46.26	44.03	45.25	52.47	47.87	48.38	46.39	41.59	44.14
July	47.59	44.76	46.27	54.32	48.41	48.92	47.81	42.13	44.99
August	48.76	47.62	48.22	56.03	50.70	51.02	49.34	44.57	46.95
September	51.07	50.46	50.78	56.14	54.06	54.24	51.08	45.39	48.22
October	53.71	51.40	52.67	58.25	55.31	55.55	53.16	45.71	49.59
November	58.92	56.30	57.75	62.13	60.85	61.00	58.26	50.75	54.69
December	61.10	57.44	59.53	64.57	63.94	64.04	59.64	50.87	55.54
2017	52.05	49.12	50.68	56.98	53.46	53.87	52.03	45.21	48.63
2018									
January	66.08	R59.71	R63.25	66.24	65.97	66.01	65.21	51.67	58.61
February	64.68	R58.03	R61.74	66.09	64.96	65.16	63.69	48.42	56.43
March	64.03	R56.82	R60.81	66.71	65.31	65.63	64.24	R47.11	R56.27
April	67.14	R61.24	R64.41	69.95	70.27	70.21	67.21	R50.98	R59.12
May	R71.29	R65.89	R68.91	71.37	72.17	72.00	R71.04	58.27	R64.64
June	R69.63	R66.82	R68.35	71.35	72.91	72.62	68.42	R59.23	R64.08
July	R73.33	R66.62	R70.29	72.72	71.71	71.90	73.40	R60.98	R67.41
August	69.45	65.48	67.68	72.07	72.03	72.04	69.20	58.09	64.13
September	R71.09	R66.70	R69.29	73.74	75.40	74.83	70.14	54.36	63.22
October	R73.07	R67.79	R70.99	75.33	75.36	75.35	71.74	52.76	63.58
November	62.47	54.40	59.01	69.43	69.13	69.18	57.01	38.34	47.16
December	53.25	42.80	48.83	60.15	61.46	61.18	47.52	19.78	33.41
2018	R67.05	60.95	R64.38	69.71	69.63	69.64	65.69	R49.35	R57.85
2019									
January	53.86	49.57	52.11	59.24	59.65	59.58	50.20	38.63	44.40
February	R57.89	R56.50	R57.35	62.66	65.08	64.48	54.36	49.88	52.16
March	R61.41	R61.20	R61.33	66.20	69.27	68.49	60.14	54.74	57.29

See footnotes at end of table.

Table 1A. Refiner acquisition cost of crude oil by PAD Districts (cont.)

dollars per barrel

Year month	PAD District 3			PAD District 4			PAD District 5		
	Domestic	Imported	Composite	Domestic	Imported	Composite	Domestic	Imported	Composite
2004	39.28	34.79	35.87	39.98	35.93	37.81	36.81	38.20	37.30
2005	53.17	47.77	48.99	53.50	48.54	50.89	50.61	50.77	50.67
2006	63.17	58.34	59.54	60.80	56.17	58.45	60.90	61.44	61.15
2007	70.58	66.34	67.48	65.79	60.81	63.43	67.47	69.42	68.34
2008	100.39	91.86	94.11	91.49	88.56	90.12	94.53	96.30	95.35
2009	60.61	59.21	59.64	56.30	56.53	56.39	57.79	60.07	58.78
2010	78.73	75.67	76.65	73.56	70.77	72.37	76.56	78.23	77.34
2011	103.24	104.78	104.24	89.34	84.87	87.61	103.83	105.68	104.73
2012	104.32	105.18	104.83	86.83	80.80	84.63	103.03	106.43	104.69
2013	104.64	101.42	103.02	88.96	80.75	85.21	103.82	105.12	104.40
2014	94.67	90.84	93.06	84.63	78.73	81.93	94.45	96.13	95.22
2015	50.16	46.49	48.75	44.77	39.73	42.28	50.30	50.91	50.59
2016	41.97	38.22	40.42	41.48	34.49	38.11	42.10	42.21	42.16
2017									
January	51.15	48.10	49.85	50.68	41.66	46.38	52.87	52.35	52.61
February	52.72	49.73	51.37	52.61	42.82	47.68	53.93	52.71	53.31
March	50.32	46.58	48.77	49.06	40.36	44.87	51.24	50.43	50.83
April	50.98	47.37	49.51	49.19	40.95	45.53	52.31	50.78	51.48
May	49.39	46.88	48.41	48.03	42.03	45.68	50.25	49.78	49.98
June	46.02	43.62	45.11	44.97	40.31	43.17	46.91	46.53	46.72
July	47.24	43.93	45.96	46.30	42.36	44.55	48.78	48.53	48.64
August	48.11	47.46	47.87	48.76	42.63	46.02	50.27	50.44	50.37
September	50.53	51.49	50.87	50.47	43.58	47.34	53.23	53.92	53.62
October	53.35	52.03	52.87	51.66	44.11	48.56	56.57	56.09	56.32
November	58.69	56.47	57.89	56.98	49.24	53.78	61.56	61.45	61.50
December	61.28	58.19	60.23	57.78	48.21	53.79	63.05	62.02	62.54
2017	51.74	49.12	50.73	50.43	43.05	47.19	53.44	52.77	53.08
2018									
January	R65.99	R61.79	R64.45	63.61	47.53	56.04	68.59	R66.20	R67.46
February	64.83	60.66	63.32	60.99	43.15	53.36	66.70	R64.52	R65.59
March	63.43	58.65	61.64	61.80	42.31	53.23	66.74	R64.38	R65.42
April	66.59	63.43	65.39	64.52	45.53	56.14	69.83	67.99	68.89
May	70.66	67.10	69.43	R68.37	54.97	R63.01	R75.61	R73.53	R74.52
June	69.28	67.69	68.68	65.51	56.58	61.50	R74.61	73.54	R74.02
July	R73.45	67.85	R71.35	R68.41	57.79	R63.60	74.24	70.45	72.15
August	68.89	65.76	67.77	66.53	56.09	61.96	73.81	72.11	72.81
September	R70.43	R70.22	R70.36	R69.26	R47.21	R59.67	R76.05	R74.91	R75.47
October	R72.85	72.38	R72.71	67.91	52.13	59.81	77.82	R76.85	R77.31
November	63.26	60.90	62.54	52.37	34.08	42.36	69.68	66.88	68.31
December	54.32	51.89	53.60	44.09	22.24	33.15	58.83	56.42	57.58
2018	R66.94	R64.10	R65.95	R62.87	R45.87	R55.01	R70.82	68.91	69.81
2019									
January	54.23	52.79	53.85	48.67	37.65	43.36	59.23	58.48	58.84
February	58.05	58.13	58.07	53.64	49.23	51.74	R64.13	R62.21	R63.17
March	60.88	62.46	61.30	56.86	53.58	55.48	67.19	67.86	67.53

R = Revised data.

Notes: United States is defined as the 50 states, the District of Columbia, Puerto Rico, the Virgin Islands, and all American territories and possessions. Values reflect the PAD District in which the crude oil is intended to be refined. - Values shown for the current month are preliminary. Values shown for the previous month may be revised. Data through 2018 are final.

Sources: U.S. Energy Information Administration Form EIA-14, "Refiners' Monthly Cost Report," January 2004 to present."

Table 2. U.S. refiner prices of petroleum products to end users

dollars per gallon, excluding taxes

Year month	Motor gasoline	Aviation gasoline	Kerosene type jet fuel	Propane (consumer grade)	Kerosene	No. 2 distillate				Residual fuel oil	
						No. 1 distillate	No. 2 diesel fuel	No. 2 fuel oil	Average		No. 4 fuel[a]
1994	0.738	0.957	0.534	0.530	0.660	0.640	0.554	0.572	0.556	0.501	0.352
1995	0.765	1.005	0.540	0.492	0.589	0.620	0.560	0.562	0.560	0.505	0.392
1996	0.847	1.116	0.651	0.605	0.740	0.726	0.681	0.673	0.680	0.603	0.455
1997	0.839	1.128	0.613	0.552	0.745	0.689	0.642	0.636	0.642	0.565	0.423
1998	0.673	0.975	0.452	0.405	0.501	0.551	0.494	0.482	0.492	0.428	0.305
1999	0.781	1.059	0.543	0.458	0.605	0.621	0.584	0.558	0.580	0.474	0.374
2000	1.106	1.306	0.899	0.603	1.123	0.988	0.935	0.927	0.934	0.769	0.602
2001	1.032	1.323	0.775	0.506	1.045	0.902	0.842	0.829	0.840	0.679	0.531
2002	0.947	1.288	0.721	0.419	0.990	0.828	0.762	0.737	0.759	0.657	0.569
2003	1.156	1.493	0.872	0.577	1.224	1.017	0.944	0.933	0.942	0.856	0.698
2004	1.435	1.819	1.207	0.839	1.160	1.262	1.243	1.173	1.235	1.017	0.739
2005	1.829	2.231	1.735	1.089	1.957	1.832	1.786	1.705	1.777	W	1.048
2006	2.128	2.682	1.998	1.358	2.244	2.137	2.096	1.982	2.091	W	1.218
2007	2.345	2.849	2.165	1.489	2.263	2.286	2.267	2.241	2.266	W	1.374
2008	2.775	3.273	3.052	1.892	3.283	2.983	3.150	2.986	3.143	W	1.964
2009	1.888	2.442	1.704	1.220	2.675	2.141	1.834	1.962	1.840	W	1.341
2010	2.301	3.028	2.201	1.481	3.063	2.705	2.314	2.462	2.318	W	1.713
2011	3.050	3.803	3.054	1.709	3.616	3.467	3.117	3.193	3.119	W	2.401
2012	3.154	3.971	3.104	1.139	3.843	3.580	3.202	3.358	3.206	W	2.592
2013	3.049	3.932	2.979	1.028	3.842	3.483	3.122	3.335	3.126	W	2.482
2014	2.855	3.986	2.772	1.097	W	3.117	2.923	3.329	2.924	W	2.325
2015	2.003	W	1.629	0.481	W	1.822	1.819	2.016	1.821	W	1.285
2016	1.730	W	1.319	0.498	W	1.702	1.511	1.716	1.512	W	0.945
2017											
January	1.900	W	1.584	0.774	W	2.138	1.747	NA	1.750	W	1.309
February	1.862	W	1.615	0.814	W	2.190	1.755	2.033	1.757	W	1.291
March	1.904	W	1.554	0.657	W	2.142	1.699	1.909	1.701	W	1.239
April	1.997	W	1.595	0.652	W	W	1.747	2.081	1.748	W	1.201
May	1.963	W	1.492	0.650	2.637	W	1.693	NA	1.694	W	1.213
June	1.906	W	1.434	0.611	2.600	2.018	1.618	1.739	1.618	W	1.195
July	1.871	W	1.478	0.667	2.621	W	1.665	1.728	1.665	-	1.211
August	1.952	W	1.613	0.768	2.579	W	1.792	1.904	1.793	W	1.204
September	2.154	W	1.795	0.895	2.703	2.382	1.959	2.044	1.959	W	1.314
October	2.042	W	1.743	0.972	W	2.452	1.982	2.048	1.983	-	1.304
November	2.122	W	1.831	1.011	W	2.466	2.047	2.134	2.048	-	1.413
December	2.034	W	1.869	1.028	W	2.423	2.037	2.263	2.039	-	1.484
2017	1.976	W	1.629	0.772	W	2.230	1.811	2.010	1.813	W	1.287
2018											
January	2.108	W	2.012	0.971	W	2.506	2.144	2.206	2.145	-	1.507
February	2.127	W	1.970	0.948	W	2.510	2.107	2.365	2.110	-	1.490
March	2.160	W	1.924	0.842	W	2.566	2.076	2.484	2.078	-	1.452
April	2.315	W	2.080	0.839	W	W	2.201	2.486	2.202	-	1.504
May	2.494	W	2.221	0.916	3.219	W	2.368	2.478	2.368	-	1.667
June	2.469	W	2.196	0.883	3.292	W	2.340	2.413	2.341	-	1.731
July	2.442	W	2.176	0.956	W	W	2.316	2.436	2.316	-	1.767
August	2.421	W	2.183	0.989	3.272	W	2.327	2.499	2.327	-	1.764
September	2.428	W	2.257	1.062	3.189	W	2.388	2.612	2.388	-	1.761
October	2.441	W	2.349	0.988	W	2.850	2.500	2.696	2.501	-	1.875
November	2.205	W	2.162	0.876	W	2.719	2.282	2.431	2.284	-	1.827
December	1.973	W	1.852	0.794	W	2.397	1.981	2.222	1.983	-	1.608
2018	2.303	W	2.119	0.925	3.113	2.600	2.256	2.380	2.257	-	1.662
2019											
January	1.854	W	1.827	0.756	W	2.323	1.960	2.195	1.962	-	1.425
February	R1.949	W	1.956	0.784	W	2.401	R2.080	2.367	R2.082	-	1.568
March	2.137	W	2.005	0.762	W	2.503	2.158	2.376	2.159	-	1.623

NA = Not available.

- = No data reported.

W = Withheld to avoid disclosure of individual company data.

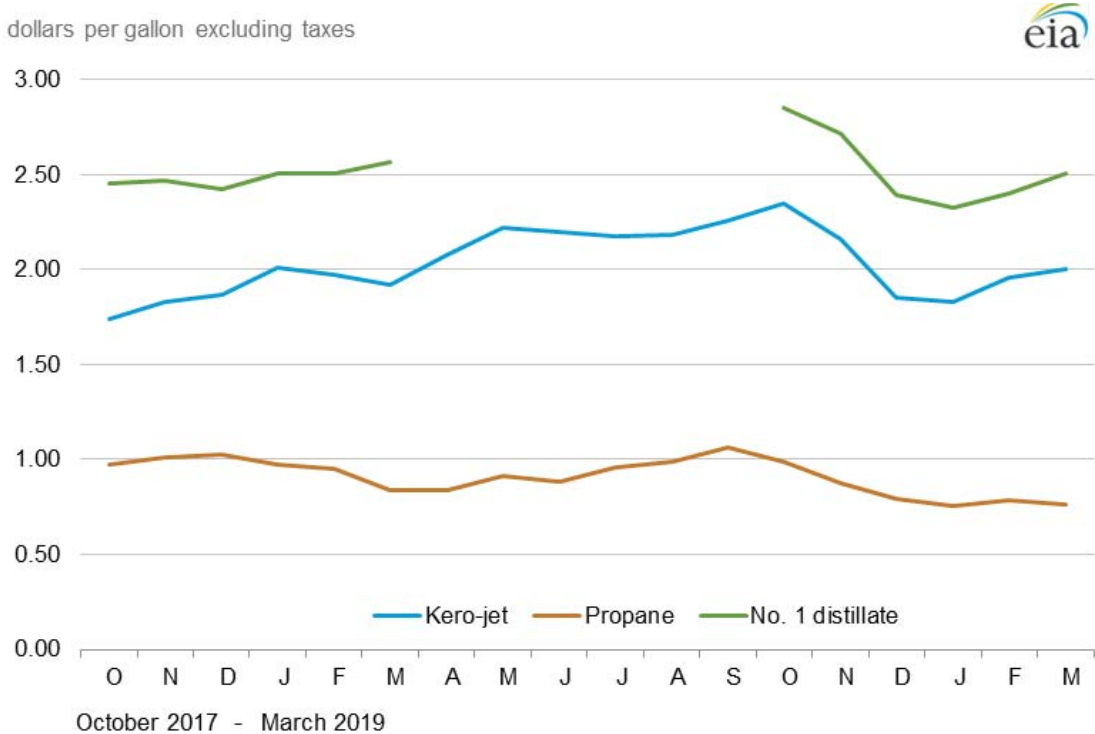
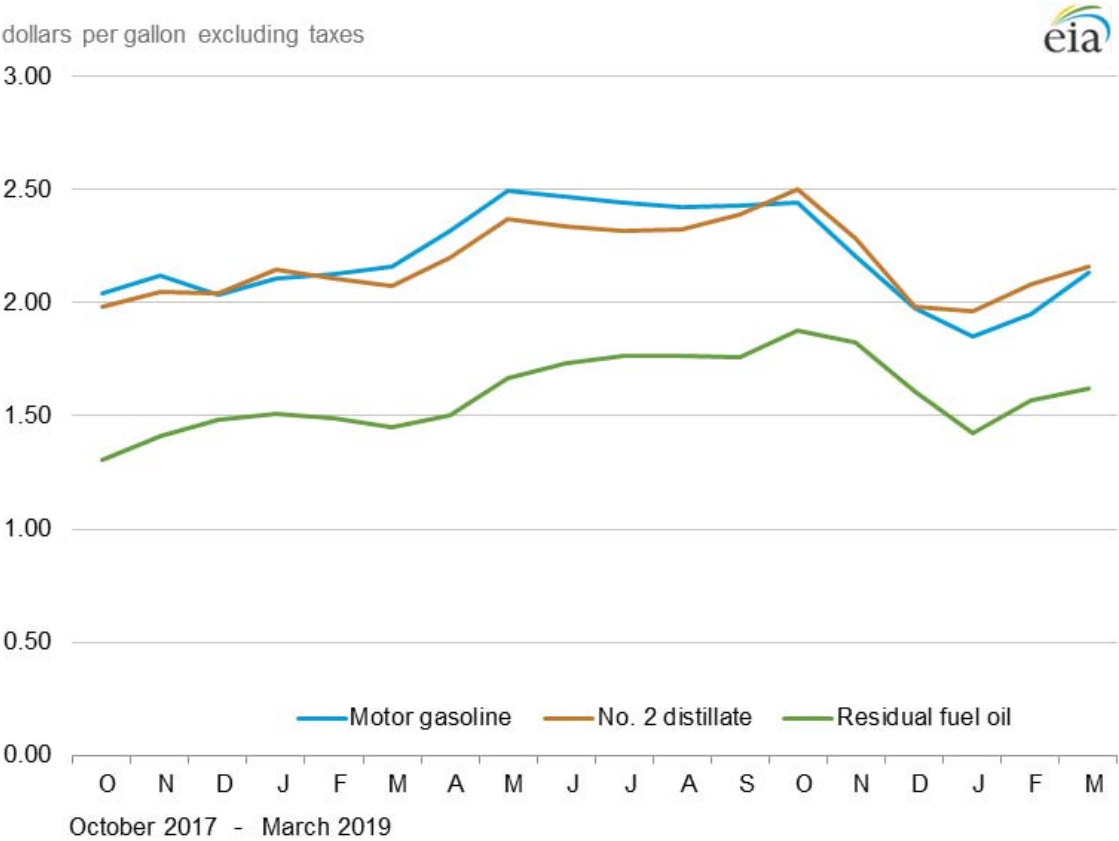
R = Revised data.

[a] Includes No. 4 fuel oil and No. 4 diesel fuel.

Notes: Motor gasoline averages and totals before October 1993 include leaded gasoline. Values shown for the current month are preliminary. Values shown for previous months may be revised. Data through 2018 are final.

Sources: U.S. Energy Information Administration Form EIA-782A, Refiners'/Gas Plant Operators' Monthly Petroleum Product Sales Report.

Figure 2. U.S. Refiner retail petroleum product prices



Sources: U.S. Energy Information Administration, Form EIA-782A, "Refiners'/Gas Plant Operators' Monthly Petroleum Sales Report."

Table 3. U.S. refiner volumes of petroleum products to end users

million gallons per day

Year month	Motor gasoline	Aviation gasoline	Kerosene type jet fuel	Propane (consumer grade)	Kerosene	No. 2 distillate				Residual fuel oil	
						No. 1 distillate	No. 2 diesel fuel	No. 2 fuel oil	Average		No. 4 fuel[a]
1994	55.0	0.2	45.2	2.2	0.4	0.4	21.3	3.4	24.6	0.8	13.5
1995	55.9	0.2	45.7	3.2	0.6	0.3	21.6	3.3	24.9	0.5	11.6
1996	57.5	0.2	48.7	3.1	0.4	0.3	21.9	3.1	25.0	0.4	12.9
1997	61.1	0.2	49.7	3.2	0.3	0.4	22.0	3.0	25.0	0.3	13.4
1998	63.3	0.2	48.9	3.1	0.4	0.4	21.1	3.2	24.3	0.3	14.4
1999	62.0	0.1	47.0	3.6	0.2	0.3	21.1	3.0	24.1	0.3	13.9
2000	60.9	0.2	49.3	2.9	0.2	0.3	22.6	2.8	25.4	0.3	13.1
2001	62.0	0.1	49.7	3.6	0.2	0.3	22.9	3.0	26.0	0.4	14.8
2002	63.6	0.1	49.1	2.6	0.1	0.3	19.6	3.0	22.6	0.4	10.4
2003	63.8	0.1	44.0	2.5	0.1	0.3	16.7	2.7	19.5	0.3	10.7
2004	58.4	0.1	46.4	2.7	0.5	0.2	16.9	2.4	19.3	0.3	10.2
2005	59.0	0.1	45.2	3.2	0.1	0.3	17.0	2.1	19.1	W	10.4
2006	60.0	0.1	42.1	2.7	0.1	0.2	24.2	1.2	25.4	W	10.4
2007	57.7	0.1	40.1	3.3	0.1	0.2	23.6	0.8	24.3	W	10.9
2008	55.1	0.1	39.9	2.7	NA	0.1	19.9	0.9	20.8	W	8.4
2009	49.8	0.2	38.0	3.7	NA	0.1	16.9	0.9	17.8	W	8.5
2010	44.7	0.1	34.8	3.9	0.0	0.1	15.3	0.4	15.8	W	7.6
2011	39.0	0.1	33.3	4.5	0.0	0.1	13.4	0.4	13.8	W	6.4
2012	29.7	0.1	32.5	5.6	0.0	0.1	12.2	0.3	12.5	W	5.5
2013	24.7	0.0	31.4	5.3	0.0	0.1	11.5	0.2	11.7	W	5.2
2014	21.6	0.0	31.3	4.9	W	0.1	11.9	0.1	11.9	W	4.6
2015	25.5	W	33.4	5.6	W	0.1	12.6	0.1	12.7	W	4.0
2016	25.6	W	31.2	6.1	W	0.1	12.6	0.1	12.7	W	4.2
2017											
January	22.9	W	28.7	5.7	W	0.1	12.2	NA	12.4	W	3.9
February	23.8	W	30.6	6.4	W	0.1	12.0	0.1	12.1	W	4.4
March	24.5	W	33.1	5.1	W	0.1	12.8	0.1	12.9	W	4.6
April	24.3	W	30.9	5.8	W	W	12.0	0.1	12.0	W	3.8
May	24.9	W	31.6	6.7	0.0	W	12.4	NA	12.5	W	3.8
June	25.7	W	33.2	5.0	0.0	0.0	12.3	0.0	12.3	W	3.7
July	24.8	W	32.7	5.0	0.0	W	12.0	0.1	12.1	-	3.4
August	25.2	W	32.1	5.8	0.0	W	12.7	0.1	12.8	W	3.7
September	24.6	W	30.4	4.9	0.0	0.1	12.4	0.1	12.4	W	4.1
October	24.9	W	29.5	3.9	W	0.1	12.3	0.1	12.4	-	3.5
November	24.3	W	30.4	4.4	W	0.1	12.7	0.2	12.9	-	4.3
December	24.1	W	28.8	3.1	W	0.1	11.4	0.1	11.5	-	4.6
2018											
January	22.5	W	29.1	3.5	W	0.1	11.7	0.3	12.0	-	3.7
February	23.4	W	27.8	3.2	W	0.1	11.8	0.1	12.0	-	3.6
March	24.1	W	31.7	3.4	W	0.1	12.7	0.1	12.8	-	3.6
April	23.8	W	29.9	4.3	W	W	13.0	0.0	13.0	-	3.5
May	24.3	W	32.0	3.0	0.0	W	12.2	0.1	12.3	-	3.2
June	25.1	W	31.3	3.3	0.0	W	11.5	0.1	11.6	-	3.0
July	24.6	W	33.2	3.1	W	W	12.4	0.1	12.4	-	3.5
August	25.4	W	33.3	4.4	0.0	W	13.4	0.0	13.4	-	3.2
September	24.4	W	32.2	3.7	0.0	W	13.3	0.0	13.3	-	3.6
October	24.7	W	32.1	4.2	W	0.1	13.3	0.1	13.4	-	3.8
November	24.6	W	30.9	3.7	W	0.1	13.1	0.2	13.3	-	3.4
December	24.2	W	32.2	2.9	W	0.1	12.5	0.1	12.6	-	3.5
2019											
January	23.2	W	29.3	3.5	W	0.1	12.5	0.1	12.6	-	2.8
February	R23.6	W	28.9	3.2	W	0.1	12.4	0.1	12.5	-	2.3
March	24.3	W	30.5	2.3	W	0.1	11.8	0.1	11.8	-	2.2

NA = Not available.

- = No data reported.

W = Withheld to avoid disclosure of individual company data.

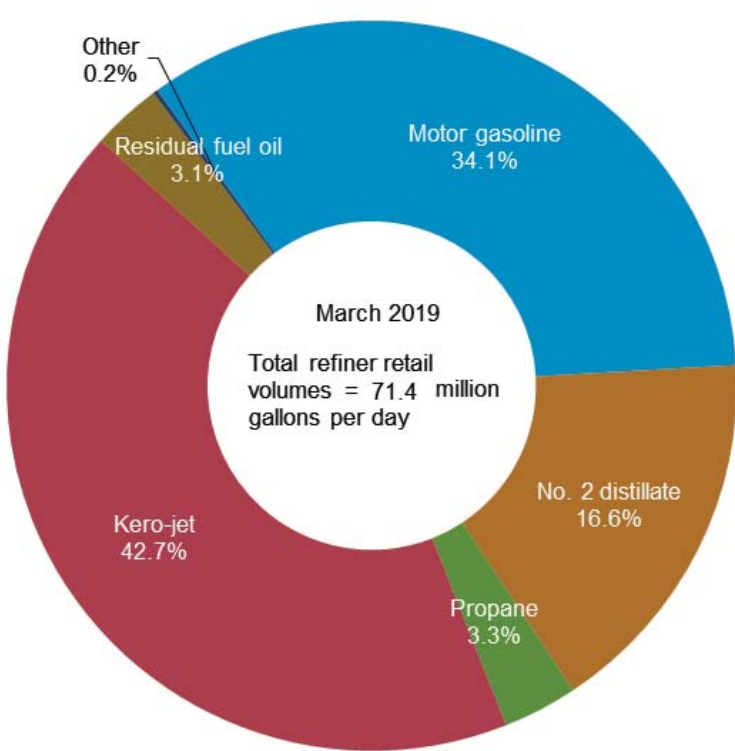
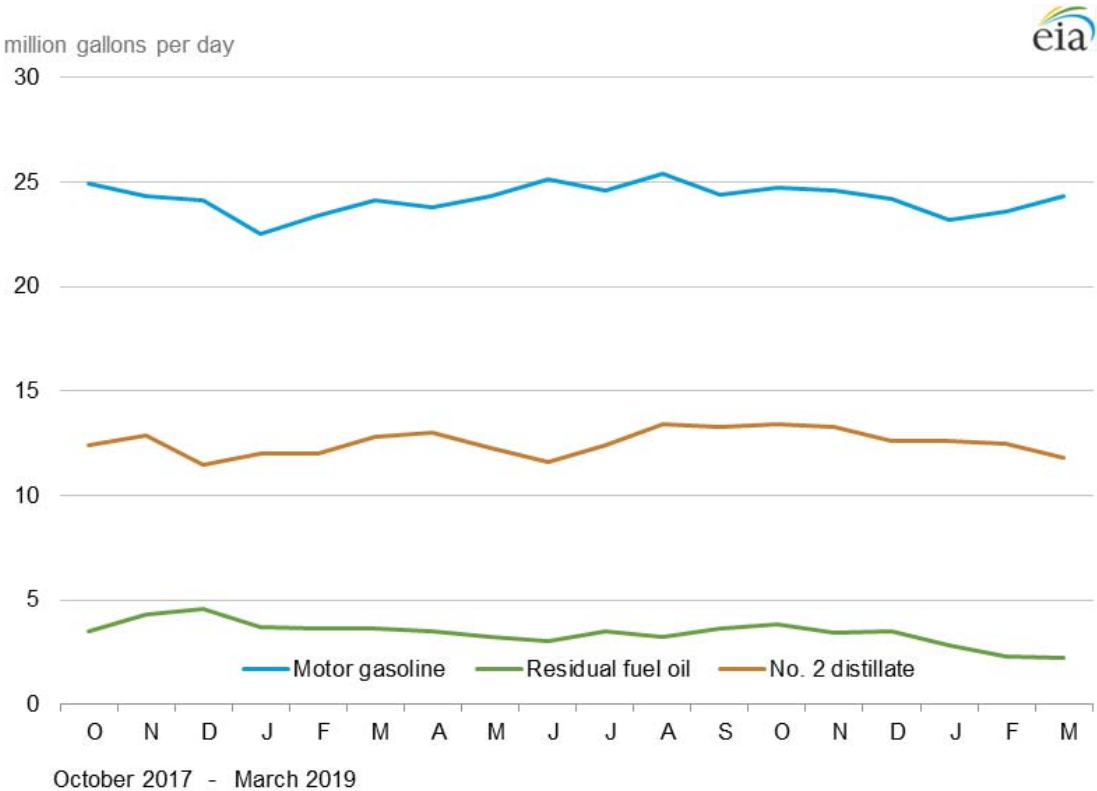
R = Revised data.

[a] Includes No. 4 fuel oil and No. 4 diesel fuel.

Notes: Motor gasoline averages and totals before October 1993 include leaded gasoline. Values shown for the current month are preliminary. Values shown for previous months are revised. Data through 2018 are final. Totals may not equal the sum of the components because of rounding.

Sources: U.S. Energy Information Administration Form EIA-782A, "Refiners'/Gas Plant Operators' Monthly Petroleum Product Sales Report."

Figure 3. U.S. refiner retail petroleum product volumes



Source: U.S. Energy Information Administration, Form EIA-782A, "Refiners'/Gas Plant Operators' Monthly Petroleum Product Sales Report."

Table 4. U.S. refiner prices of petroleum products for resale

dollars per gallon, excluding taxes

Year month	Motor gasoline	Aviation gasoline	Kerosene type jet fuel	Propane (consumer grade)	Kerosene	No. 2 distillate				Residual fuel oil	
						No. 1 distillate	No. 2 diesel fuel	No. 2 fuel oil	Average		No. 4 fuel[a]
1994	0.599	0.933	0.534	0.324	0.618	0.615	0.529	0.506	0.522	0.462	0.317
1995	0.626	0.975	0.539	0.344	0.580	0.625	0.538	0.511	0.530	0.463	0.363
1996	0.713	1.055	0.646	0.461	0.714	0.751	0.659	0.639	0.653	0.603	0.420
1997	0.70	1.065	0.613	0.416	0.653	0.723	0.606	0.590	0.602	0.551	0.387
1998	0.526	0.912	0.450	0.288	0.465	0.513	0.444	0.422	0.439	0.383	0.280
1999	0.645	1.007	0.533	0.342	0.550	0.634	0.546	0.493	0.536	0.430	0.354
2000	0.963	1.330	0.880	0.595	0.969	1.019	0.898	0.886	0.896	0.778	0.566
2001	0.886	1.256	0.763	0.540	0.821	0.883	0.784	0.756	0.779	0.697	0.476
2002	0.828	1.146	0.716	0.431	0.752	0.805	0.724	0.694	0.718	0.663	0.530
2003	1.002	1.288	0.871	0.607	0.955	1.033	0.883	0.881	0.882	0.793	0.661
2004	1.288	1.627	1.208	0.751	1.271	1.289	1.187	1.125	1.178	1.033	0.681
2005	1.670	2.076	1.723	0.933	1.757	1.801	1.737	1.623	1.720	1.377	0.971
2006	1.969	2.490	1.961	1.031	2.007	2.044	2.012	1.834	1.991	1.395	1.136
2007	2.182	2.758	2.171	1.194	2.249	2.430	2.203	2.072	2.190	1.551	1.350
2008	2.586	3.342	3.020	1.437	2.851	2.712	2.994	2.745	2.970	2.157	1.866
2009	1.767	2.480	1.719	0.921	1.844	2.050	1.713	1.657	1.707	1.561	1.342
2010	2.165	2.874	2.185	1.212	2.299	2.573	2.214	2.147	2.208	W	1.697
2011	2.867	3.739	3.014	1.467	3.065	3.223	3.034	2.907	3.025	2.801	2.336
2012	2.929	3.919	3.080	1.033	3.163	3.349	3.109	3.031	3.103	W	2.457
2013	2.812	3.869	2.953	1.048	3.084	3.340	3.028	2.966	3.025	2.767	2.278
2014	2.618	3.687	2.763	1.165	2.882	3.213	2.812	2.741	2.809	2.333	2.044
2015	1.726	2.764	1.592	0.555	1.735	1.957	1.667	1.565	1.663	1.215	0.996
2016	1.454	2.404	1.295	0.523	1.383	1.589	1.378	1.239	1.370	0.956	0.745
2017											
January	1.627	2.614	1.561	0.788	1.761	1.964	1.636	1.560	1.629	W	1.119
February	1.625	2.592	1.592	0.792	1.657	1.882	1.641	1.553	1.634	W	1.121
March	1.634	2.618	1.520	0.671	1.580	1.854	1.581	1.495	1.575	W	1.077
April	1.723	2.724	1.545	0.641	1.572	1.953	1.627	1.499	1.620	W	1.039
May	1.668	2.620	1.459	0.631	1.481	1.920	1.552	1.447	1.548	W	1.043
June	1.574	2.552	1.378	0.585	1.360	1.823	1.465	1.375	1.461	W	0.991
July	1.621	2.608	1.436	0.634	1.468	1.869	1.533	1.392	1.529	W	1.039
August	1.711	2.710	1.587	0.742	1.630	1.997	1.681	1.522	1.675	W	1.079
September	1.826	2.893	1.771	0.864	1.809	2.207	1.847	1.668	1.841	W	1.138
October	1.730	2.716	1.704	0.942	1.805	2.206	1.852	1.695	1.846	W	1.176
November	1.806	2.841	1.795	0.997	1.961	2.284	1.936	1.781	1.926	W	1.279
December	1.720	2.691	1.846	0.991	2.034	2.256	1.918	1.841	1.911	W	1.249
2017	1.689	2.682	1.603	0.800	1.730	2.093	1.691	1.600	1.686	W	1.116
2018											
January	1.849	2.900	1.969	0.990	2.209	2.430	2.042	1.990	2.036	W	1.310
February	1.823	2.893	1.911	0.889	2.088	2.295	1.972	1.889	1.966	W	1.319
March	1.889	2.904	1.893	0.827	1.969	2.209	1.952	1.848	1.946	W	1.302
April	2.054	3.085	2.032	0.792	2.075	2.414	2.099	1.982	2.093	W	1.348
May	2.205	3.181	2.175	0.867	2.205	2.606	2.258	2.143	2.254	W	1.500
June	2.135	3.138	2.152	0.807	2.145	2.544	2.203	2.089	2.200	W	1.553
July	2.148	3.111	2.140	0.854	2.133	2.489	2.192	2.079	2.189	W	1.581
August	2.118	3.085	2.148	0.907	2.169	2.485	2.203	2.114	2.201	W	1.549
September	2.136	3.124	2.214	0.951	2.246	2.560	2.282	2.214	2.280	W	1.560
October	2.090	3.099	2.296	0.948	2.437	2.665	2.379	2.281	2.373	W	1.700
November	1.732	2.762	2.100	0.826	2.206	2.449	2.130	2.098	2.128	W	1.556
December	1.514	2.463	1.811	0.798	1.954	2.175	1.794	1.796	1.794	W	1.293
2018	1.980	3.006	2.073	0.877	2.160	2.380	2.130	2.002	2.123	W	1.463
2019											
January	1.483	2.394	1.822	0.775	2.021	2.127	1.789	1.813	1.791	W	1.357
February	1.624	2.527	1.925	0.772	2.111	2.246	1.950	1.907	1.946	W	1.508
March	1.881	2.874	1.960	0.754	2.087	2.389	2.020	1.958	2.015	W	1.572

W = Withheld to avoid disclosure of individual company data.

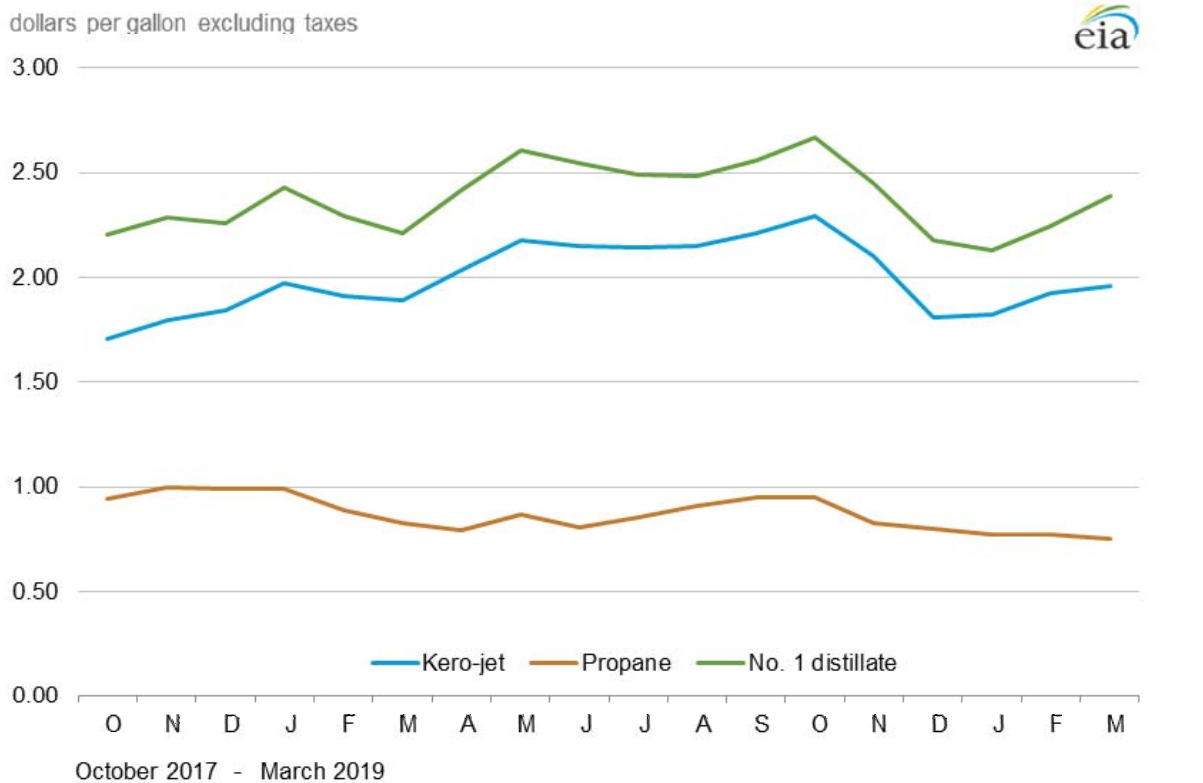
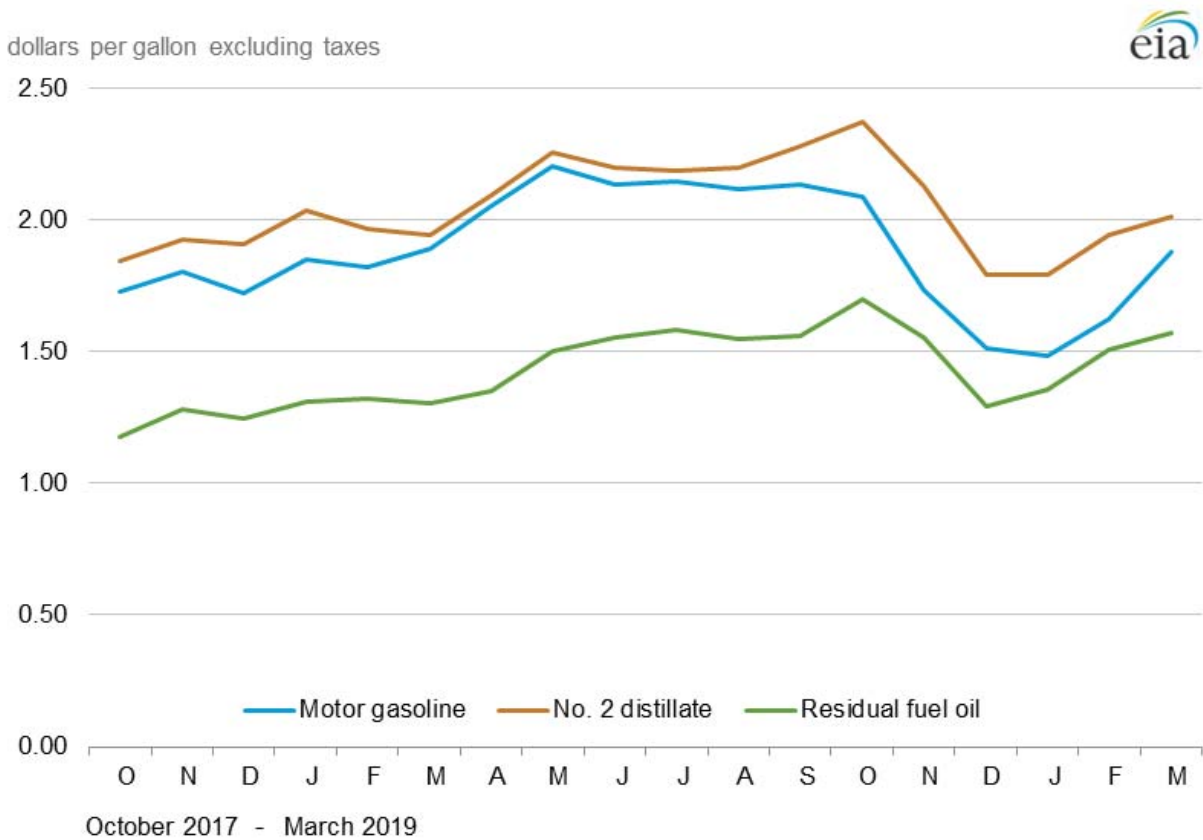
R = Revised data.

[a] Includes No. 4 fuel oil and No. 4 diesel fuel.

Notes: - Motor gasoline averages and totals before October 1993 include leaded gasoline. - Values shown for the current month are preliminary. Values shown for previous months may be revised. Data through 2018 are final.

Sources: U.S. Energy Information Administration Form EIA-782A, Refiners'/Gas Plant Operators' Monthly Petroleum Product Sales Report.

Figure 4. U.S. Refiner wholesale petroleum product prices



Source: U.S. Energy Information Administration, Form EIA-782A, "Refiners'/Gas Plant Operators' Monthly Petroleum Product Sales Report."

Table 5. U.S. refiner volumes of petroleum sales for resale

million gallons per day

Year month	Motor gasoline	Aviation gasoline	Kerosene type jet fuel	Propane (consumer grade)	Kerosene	No. 2 distillate				Residual fuel oil	
						No. 1 distillate	No. 2 diesel fuel	No. 2 fuel oil	Average		No. 4 fuel[a]
1994	276.7	0.7	9.1	28.4	2.5	1.9	72.4	32.9	105.3	0.4	12.8
1995	288.8	0.6	9.9	30.6	2.4	1.7	75.9	31.0	106.9	0.3	13.6
1996	293.6	0.6	11.5	32.9	2.7	1.8	83.7	33.1	116.8	0.3	13.8
1997	292.7	0.6	11.3	32.2	2.5	1.6	88.7	31.2	119.9	0.2	11.5
1998	300.4	0.6	12.2	32.7	2.2	1.4	91.9	27.3	119.2	0.1	15.4
1999	306.9	0.7	15.2	33.6	2.4	1.7	95.5	24.3	119.9	0.2	11.5
2000	304.4	0.6	15.7	34.8	2.3	1.5	98.8	23.3	122.1	0.2	10.5
2001	305.2	0.6	14.3	35.0	2.2	1.4	101.3	25.2	126.4	0.1	10.3
2002	311.8	0.6	12.1	32.9	2.0	1.3	100.8	23.6	124.4	0.1	8.8
2003	311.6	0.5	12.2	36.5	2.3	1.2	108.9	20.9	129.8	0.1	6.7
2004	316.4	0.6	12.7	40.3	2.1	1.3	116.5	19.6	136.1	NA	5.9
2005	321.8	0.5	15.2	35.1	2.0	1.4	118.7	20.6	139.3	NA	4.7
2006	315.6	0.5	15.2	39.4	1.4	1.3	123.2	16.7	139.9	0.3	6.5
2007	319.8	0.5	16.6	41.7	1.4	0.9	135.3	14.5	149.8	0.3	8.2
2008	306.4	0.4	16.5	34.2	1.0	1.0	138.7	14.9	153.6	0.2	9.5
2009	307.4	0.4	15.2	31.8	1.3	1.0	128.0	15.1	143.1	0.1	9.8
2010	312.0	0.4	20.3	28.3	1.4	0.9	135.5	11.5	147.0	W	10.7
2011	296.3	0.4	23.0	28.6	1.2	1.0	134.6	10.7	145.3	0.1	12.2
2012	294.7	0.4	23.5	27.6	1.2	0.8	136.9	10.7	147.6	W	8.8
2013	291.0	0.4	26.4	34.9	1.3	1.0	142.9	7.7	150.6	0.1	9.0
2014	289.2	0.4	27.5	32.9	1.4	1.4	146.3	7.0	153.3	0.1	8.0
2015	298.7	0.4	28.6	31.6	1.2	1.2	146.5	6.7	153.2	0.2	8.1
2016	303.8	0.4	30.3	32.4	1.2	1.0	138.3	8.2	146.5	0.1	8.4
2017											
January	277.9	0.3	30.2	38.5	1.4	2.5	129.6	13.7	143.4	W	6.6
February	289.7	0.4	32.8	37.3	1.3	1.8	134.3	11.3	145.6	W	6.2
March	297.2	0.4	31.8	28.0	0.7	0.9	138.0	9.6	147.5	W	5.9
April	302.9	0.4	40.2	23.3	0.7	0.2	139.3	8.0	147.3	W	6.2
May	306.0	0.4	40.2	20.0	0.8	0.1	152.1	5.5	157.6	W	5.9
June	309.7	0.6	40.2	21.5	0.6	0.1	156.7	6.8	163.5	W	8.2
July	304.0	0.5	39.7	20.0	0.7	0.1	146.1	4.2	150.3	W	6.3
August	314.9	0.5	40.2	24.7	0.7	0.2	151.2	5.4	156.6	W	8.4
September	302.5	0.5	39.6	27.2	0.8	0.3	150.2	5.5	155.6	W	7.8
October	305.9	0.5	39.4	30.4	1.0	1.0	159.1	6.9	166.0	W	8.4
November	304.8	0.4	38.5	36.7	1.3	2.3	153.5	10.7	164.2	W	7.2
December	302.2	0.5	43.6	39.7	1.6	2.8	147.1	14.5	161.6	W	8.1
2017	301.5	0.4	38.1	28.9	1.0	1.0	146.5	8.5	155.0	W	7.1
2018											
January	283.1	0.3	41.1	46.8	2.3	3.2	145.8	17.5	163.4	W	8.9
February	296.0	0.3	41.4	39.3	1.5	2.5	144.5	12.6	157.1	W	7.7
March	306.3	0.4	38.3	31.4	1.0	1.1	148.8	9.5	158.3	W	7.4
April	306.9	0.5	40.0	24.4	0.8	0.4	156.2	9.0	165.3	W	7.0
May	318.4	0.5	41.8	20.9	0.8	0.1	159.3	5.3	164.7	W	8.4
June	319.5	0.5	44.1	18.9	0.9	0.1	160.4	4.2	164.7	W	8.1
July	312.1	0.6	42.7	19.3	0.8	0.1	154.1	3.8	158.0	W	7.3
August	314.5	0.5	43.3	21.9	1.2	0.2	159.4	3.3	162.7	W	7.6
September	305.4	0.4	40.2	20.8	1.8	0.4	156.3	4.7	161.0	W	7.8
October	306.2	0.5	37.9	28.5	1.0	1.2	161.2	9.7	170.9	W	7.3
November	301.8	0.3	38.1	33.6	1.4	2.7	155.3	12.9	168.1	W	6.7
December	293.9	0.4	37.2	36.1	1.4	2.4	152.3	17.1	169.5	W	7.3
2018	305.4	0.4	40.5	28.4	1.2	1.2	154.5	9.1	163.7	W	7.6
2019											
January	287.2	0.4	36.9	41.1	1.8	3.3	150.5	15.7	166.1	W	7.9
February	R291.6	0.3	38.2	40.7	1.3	3.8	148.2	R14.5	R162.7	W	7.6
March	297.7	0.4	40.2	31.7	1.0	1.5	154.8	11.6	166.4	W	6.7

NA = Not available.

W = Withheld to avoid disclosure of individual company data.

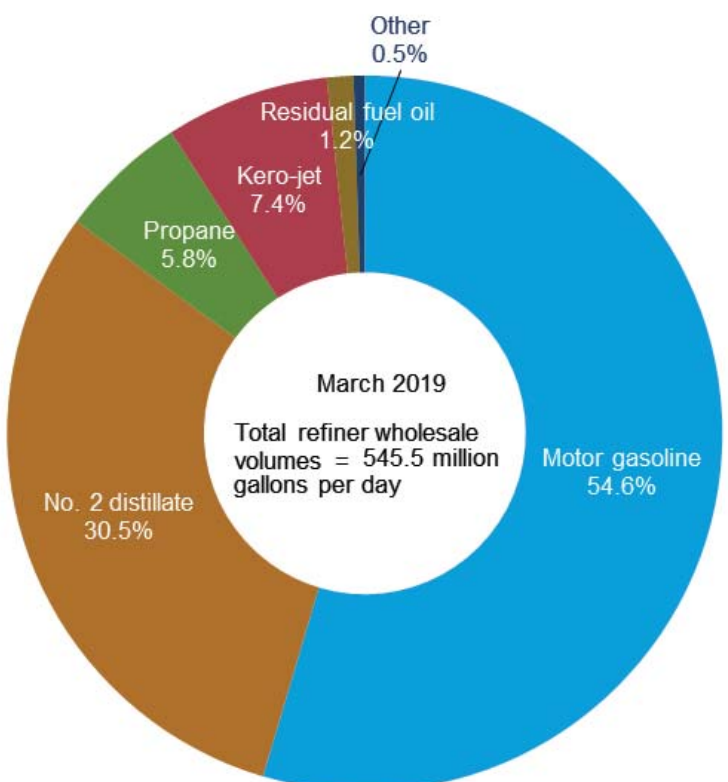
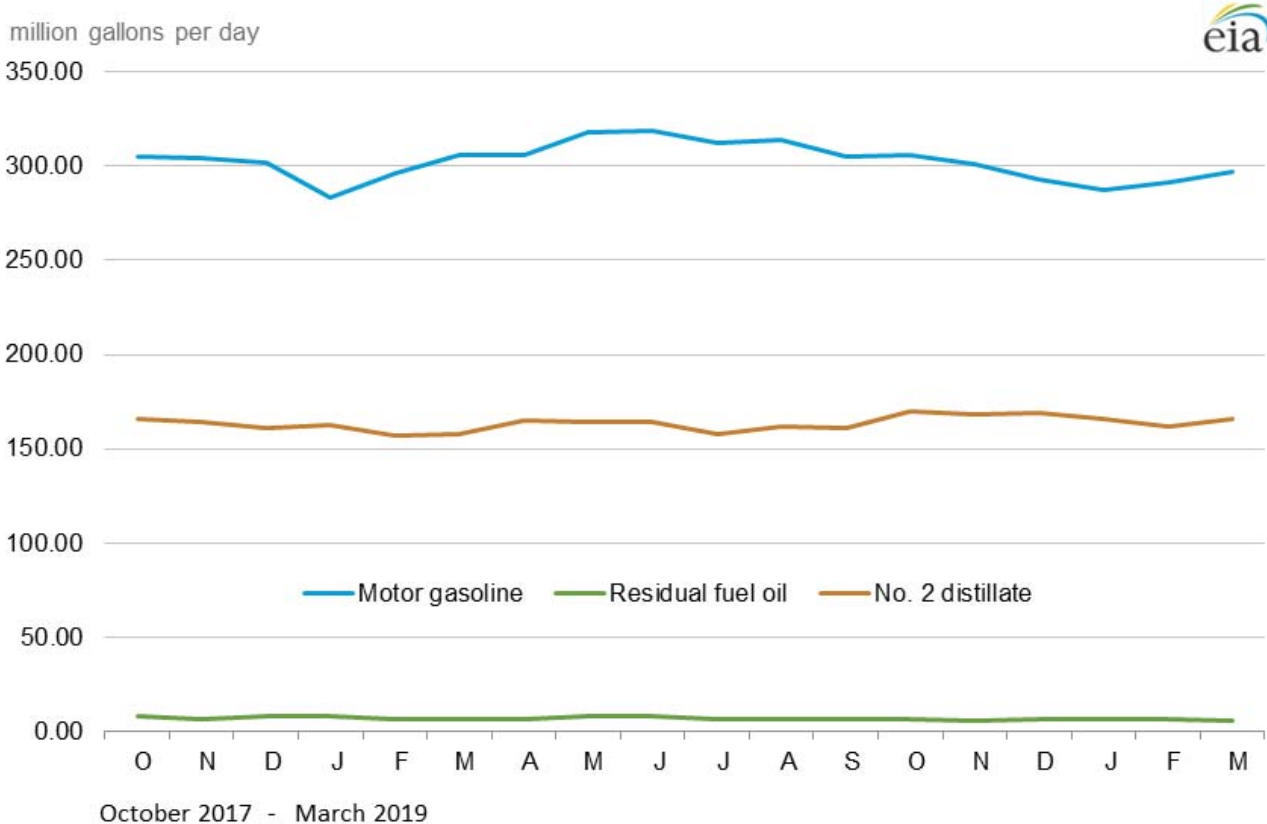
R = Revised data.

[a] Includes No. 4 fuel oil and No. 4 diesel fuel.

Notes: Motor gasoline averages and totals before October 1993 include leaded gasoline. Values shown for the current month are preliminary. Values shown for previous months are revised. Data through 2018 are final. Totals may not equal the sum of the components because of rounding.

Sources: U.S. Energy Information Administration Form EIA-782A, Refiners'/Gas Plant Operators' Monthly Petroleum Product Sales Report.

Figure 5. U.S. Refiner wholesale petroleum product volumes



Source: U.S. Energy Information Administration, Form EIA-782A, "Refiners'/Gas Plant Operators' Monthly Petroleum Product Sales Report."

Table 6. U.S. refiner motor gasoline prices by grade and sales type
dollars per gallon excluding taxes

Year month	Regular						Midgrade					
	Sales to end users		Sales for resale				Sales to end users		Sales for resale			
	Through retail outlets	Average[a]	DTW	Rack	Bulk	Average	Through retail outlets	Average[a]	DTW	Rack	Bulk	Average
1994	0.695	0.689	0.646	0.547	0.502	0.566	0.791	0.785	0.704	0.584	NA	0.638
1995	0.723	0.717	0.682	0.576	0.534	0.593	0.813	0.808	0.737	0.619	NA	0.670
1996	0.812	0.807	0.770	0.672	0.622	0.685	0.901	0.896	0.824	0.709	NA	0.759
1997	0.803	0.798	0.764	0.656	0.615	0.673	0.898	0.895	0.822	0.694	0.711	0.749
1998	0.634	0.630	0.596	0.481	0.449	0.499	0.731	0.728	0.655	0.521	NA	0.576
1999	0.747	0.742	0.730	0.605	0.542	0.620	0.838	0.835	0.784	0.639	NA	0.696
2000	1.077	1.073	1.042	0.927	0.873	0.942	1.171	1.168	1.099	0.960	-	1.013
2001	1	0.997	0.977	0.848	0.786	0.865	1.103	1.10	1.042	0.888	-	0.945
2002	0.915	0.912	0.886	0.801	0.735	0.806	1.013	1.010	0.968	0.839	-	0.885
2003	1.127	1.123	1.134	0.965	0.888	0.981	1.222	1.218	1.196	1.004	-	1.061
2004	1.407	1.404	1.414	1.257	1.182	1.269	1.503	1.499	1.469	1.296	-	1.340
2005	1.805	1.802	1.765	1.653	1.568	1.654	1.896	1.893	1.821	1.681	-	1.708
2006	2.102	2.099	2.082	1.944	1.866	1.950	2.216	2.213	2.157	1.987	-	2.016
2007	2.318	2.315	2.278	2.161	2.074	2.161	2.440	2.438	2.351	2.226	-	2.245
2008	2.752	2.748	2.702	2.558	2.525	2.570	2.880	2.879	2.775	2.588	-	2.610
2009	1.860	1.856	1.866	1.744	1.668	1.747	1.998	1.997	1.957	1.762	-	1.784
2010	2.275	2.270	2.261	2.144	2.073	2.146	2.416	2.416	2.357	2.168	-	2.185
2011	3.028	3.021	2.961	2.846	2.762	2.847	3.165	3.165	3.057	2.880	-	2.893
2012	3.132	3.118	3.086	2.892	2.836	2.904	3.291	3.290	3.194	2.906	-	2.925
2013	3.029	3.010	2.907	2.769	2.747	2.779	3.200	3.199	3.038	2.862	-	2.876
2014	2.832	2.811	2.767	2.574	2.520	2.584	3.031	3.030	2.903	2.716	-	2.738
2015	1.939	1.938	2.105	1.654	1.604	1.681	2.225	2.224	2.252	1.824	-	1.872
2016	1.661	1.660	1.701	1.392	1.354	1.410	1.935	1.934	1.839	1.552	-	1.586
2017												
January	1.831	1.830	1.822	1.571	1.583	1.588	2.112	2.111	1.950	1.730	-	1.757
February	1.785	1.785	1.897	1.560	1.567	1.583	2.103	2.101	2.056	1.729	-	1.769
March	1.826	1.826	1.964	1.562	1.563	1.590	2.146	2.144	2.105	1.735	-	1.780
April	1.925	1.924	2.002	1.660	1.616	1.680	2.210	2.206	2.148	1.831	-	1.868
May	1.886	1.885	2.005	1.596	1.557	1.620	2.194	2.192	2.143	1.774	-	1.815
June	1.829	1.828	1.920	1.500	1.506	1.528	2.143	2.142	2.033	1.677	-	1.715
July	1.795	1.794	1.869	1.557	1.518	1.576	2.090	2.089	2.009	1.727	-	1.757
August	1.879	1.877	1.962	1.648	1.608	1.666	2.175	2.173	2.105	1.822	-	1.852
September	2.082	2.080	2.094	1.763	1.707	1.781	2.386	2.382	2.200	1.948	-	1.977
October	1.970	1.968	1.979	1.670	1.660	1.689	2.270	2.268	2.112	1.835	-	1.868
November	2.054	2.052	2.037	1.748	1.761	1.767	2.345	2.342	2.170	1.905	-	1.935
December	1.964	1.963	1.931	1.662	1.710	1.683	2.258	2.256	2.067	1.813	-	1.844
2017	1.903	1.902	1.957	1.625	1.622	1.647	2.202	2.200	2.090	1.791	-	1.826
2018												
January	2.039	2.037	2.066	1.791	1.803	1.810	2.330	2.328	2.227	1.953	-	1.986
February	2.049	2.047	2.153	1.750	1.838	1.782	2.389	2.386	2.302	1.924	-	1.970
March	2.080	2.078	2.248	1.820	1.805	1.846	2.419	2.417	2.415	1.997	-	2.047
April	2.241	2.239	2.411	1.985	1.945	2.010	2.556	2.554	2.560	2.167	-	2.214
May	2.422	2.419	2.549	2.140	2.090	2.162	2.736	2.733	2.680	2.319	-	2.358
June	2.395	2.392	2.502	2.065	2.063	2.092	2.723	2.721	2.612	2.253	-	2.291
July	2.369	2.367	2.446	2.084	2.053	2.105	2.679	2.677	2.580	2.271	-	2.305
August	2.348	2.345	2.402	2.053	2.046	2.075	2.662	2.661	2.546	2.237	-	2.270
September	2.352	2.349	2.479	2.069	2.046	2.093	2.679	2.678	2.631	2.254	-	2.296
October	2.361	2.357	2.592	2.005	2.060	2.046	2.725	2.723	2.725	2.202	-	2.261
November	2.117	2.113	2.320	1.643	1.679	1.688	2.534	2.532	2.435	1.833	-	1.899
December	1.881	1.878	2.087	1.425	1.459	1.469	2.300	2.299	2.225	1.611	-	1.681
2018	2.225	2.222	2.359	1.907	1.923	1.937	2.565	2.563	2.498	2.098	-	2.143
2019												
January	1.766	1.762	1.984	1.405	1.407	1.441	2.158	2.157	2.138	1.584	-	1.644
February	R1.869	R1.865	R2.034	R1.555	1.499	1.582	R2.214	R2.213	2.230	1.728	-	1.783
March	2.059	2.056	2.212	1.819	1.729	1.839	2.392	2.391	2.381	1.994	-	2.034

See footnotes at end of table.

Table 6. U.S. refiner motor gasoline prices by grade and sales type (cont.)

dollars per gallon excluding taxes

Year month	Premium						All grades					
	Sales to end users		Sales for resale				Sales to end users		Sales for resale			
	Through retail outlets	Average[a]	DTW	Rack	Bulk	Average	Through retail outlets	Average[a]	DTW	Rack	Bulk	Average
1994	0.873	0.865	0.787	0.640	0.556	0.695	0.744	0.738	0.693	0.567	0.509	0.599
1995	0.897	0.890	0.822	0.673	0.583	0.722	0.771	0.765	0.729	0.598	0.540	0.626
1996	0.979	0.972	0.897	0.762	0.669	0.803	0.853	0.847	0.809	0.690	0.627	0.713
1997	0.979	0.973	0.895	0.749	0.658	0.792	0.844	0.839	0.803	0.674	0.620	0.70
1998	0.811	0.805	0.726	0.573	0.489	0.617	0.678	0.673	0.636	0.50	0.454	0.526
1999	0.912	0.906	0.851	0.687	0.585	0.726	0.785	0.781	0.765	0.621	0.549	0.645
2000	1.250	1.242	1.174	1.017	0.927	1.055	1.111	1.106	1.074	0.940	0.879	0.963
2001	1.181	1.175	1.112	0.936	0.830	0.980	1.035	1.032	1.009	0.862	0.791	0.886
2002	1.094	1.088	1.030	0.899	0.80	0.928	0.949	0.947	0.922	0.816	0.741	0.828
2003	1.312	1.305	1.269	1.064	0.955	1.113	1.160	1.156	1.164	0.978	0.893	1.002
2004	1.603	1.596	1.553	1.361	1.274	1.408	1.439	1.435	1.442	1.270	1.187	1.288
2005	2	1.992	1.901	1.760	1.696	1.789	1.833	1.829	1.791	1.664	1.576	1.670
2006	2.326	2.320	2.231	2.093	1.988	2.117	2.131	2.128	2.110	1.959	1.873	1.969
2007	2.558	2.552	2.460	2.339	2.209	2.357	2.349	2.345	2.311	2.180	2.080	2.182
2008	2.971	2.965	2.846	2.718	2.689	2.746	2.778	2.775	2.726	2.572	2.532	2.586
2009	2.128	2.122	2.059	1.941	1.816	1.958	1.892	1.888	1.899	1.761	1.675	1.767
2010	2.543	2.536	2.446	2.334	2.187	2.346	2.306	2.301	2.293	2.162	2.078	2.165
2011	3.291	3.283	3.139	3.047	2.873	3.049	3.058	3.050	2.990	2.864	2.769	2.867
2012	3.413	3.400	3.273	3.149	3.102	3.163	3.168	3.154	3.117	2.916	2.861	2.929
2013	3.320	3.307	3.108	3.076	3.010	3.075	3.068	3.049	2.942	2.801	2.774	2.812
2014	3.152	3.138	2.941	2.878	2.783	2.880	2.876	2.855	2.800	2.606	2.548	2.618
2015	2.392	2.386	2.312	2.035	1.845	2.061	2.006	2.003	2.148	1.696	1.627	1.726
2016	2.134	2.132	1.939	1.757	1.535	1.767	1.731	1.730	1.754	1.434	1.374	1.454
2017												
January	2.323	2.320	2.065	1.908	1.761	1.922	1.902	1.900	1.876	1.607	1.601	1.627
February	2.322	2.318	2.162	1.908	1.793	1.940	1.863	1.862	1.956	1.598	1.584	1.625
March	2.365	2.362	2.213	1.921	1.756	1.953	1.905	1.904	2.019	1.602	1.589	1.634
April	2.423	2.421	2.249	2.015	1.821	2.036	1.998	1.997	2.058	1.701	1.636	1.723
May	2.411	2.408	2.257	1.963	1.777	1.994	1.964	1.963	2.062	1.639	1.578	1.668
June	2.361	2.358	2.149	1.860	1.730	1.892	1.908	1.906	1.971	1.543	1.533	1.574
July	2.304	2.300	2.116	1.912	1.757	1.934	1.872	1.871	1.925	1.599	1.544	1.621
August	2.387	2.382	2.216	2.008	1.845	2.028	1.954	1.952	2.019	1.691	1.633	1.711
September	2.593	2.589	2.335	2.129	2.038	2.152	2.157	2.154	2.147	1.805	1.737	1.826
October	2.479	2.475	2.225	2.009	1.862	2.031	2.044	2.042	2.034	1.708	1.681	1.730
November	2.558	2.554	2.285	2.070	1.902	2.086	2.125	2.122	2.091	1.784	1.778	1.806
December	2.474	2.470	2.167	1.976	1.819	1.990	2.036	2.034	1.984	1.697	1.724	1.720
2017	2.416	2.413	2.204	1.973	1.825	1.997	1.978	1.976	2.013	1.665	1.644	1.689
2018												
January	2.552	2.547	2.328	2.115	1.992	2.136	2.111	2.108	2.125	1.827	1.824	1.849
February	2.619	2.614	2.413	2.087	1.982	2.126	2.130	2.127	2.211	1.787	1.851	1.823
March	2.649	2.644	2.523	2.166	2.013	2.206	2.162	2.160	2.307	1.859	1.821	1.889
April	2.787	2.783	2.663	2.342	2.189	2.376	2.317	2.315	2.467	2.026	1.969	2.054
May	2.952	2.945	2.789	2.492	2.315	2.521	2.498	2.494	2.602	2.181	2.108	2.205
June	2.940	2.933	2.726	2.420	2.226	2.444	2.473	2.469	2.551	2.105	2.083	2.135
July	2.897	2.891	2.687	2.434	2.255	2.455	2.445	2.442	2.499	2.125	2.076	2.148
August	2.881	2.874	2.652	2.397	2.215	2.421	2.424	2.421	2.457	2.093	2.065	2.118
September	2.897	2.891	2.740	2.410	2.263	2.446	2.431	2.428	2.537	2.108	2.065	2.136
October	2.962	2.954	2.840	2.361	2.249	2.419	2.445	2.441	2.647	2.045	2.080	2.090
November	2.764	2.755	2.542	1.998	1.825	2.062	2.210	2.205	2.369	1.683	1.694	1.732
December	2.534	2.526	2.321	1.766	1.594	1.832	1.977	1.973	2.140	1.464	1.476	1.514
2018	2.790	2.784	2.605	2.256	2.105	2.293	2.306	2.303	2.413	1.947	1.942	1.980
2019												
January	2.401	2.394	2.232	1.734	1.548	1.786	1.858	1.854	2.040	1.442	1.424	1.483
February	R2.447	R2.440	R2.312	1.877	1.721	1.925	R1.954	R1.949	R2.097	1.591	1.527	1.624
March	2.621	2.615	2.484	2.148	2.011	2.187	2.141	2.137	2.272	1.857	1.755	1.881

NA = Not available.

- = No data reported.

R = Revised data.

[a] Includes sales through retail outlets as well as all direct sales to end users that were not made through company-operated retail outlets, e.g., sales to agricultural customers, commercial sales, and industrial sales.

Notes: - Motor gasoline averages and totals prior to October 1993 include leaded gasoline. Includes sales through retail outlets as well as all direct sales to end users that were not made through company-operated retail outlets, e.g., sales to agricultural customers, commercial sales, and industrial sales. - Data for the 4th quarter of 1993 were derived from two separate survey systems. The DTW, Rack, and Bulk components were derived from the revised EIA-782 survey system, while the End-Use and Average Resale categories were derived from the predecessor EIA-782 survey system. Therefore, the DTW, Rack, and Bulk components are not consistent with the Average Resale category. Beginning January 1994, all data are from the revised EIA-782 survey system and are consistent. - Values shown for the current month are preliminary. Values shown for previous months may be revised. Data through 2018 are final.

Sources: U.S. Energy Information Administration Form EIA-782A, "Refiners'/Gas Plant Operators' Monthly Petroleum Product Sales Report."

Table 7. U.S. refiner motor gasoline volumes by grade and sales type

million gallons per day

Year month	Regular						Midgrade					
	Sales to end users		Sales for resale				Sales to end users		Sales for resale			
	Through retail outlets	Total[a]	DTW	Rack	Bulk	Total	Through retail outlets	Total[a]	DTW	Rack	Bulk	Total
1994	34.3	35.9	47.7	120.3	24.3	192.3	8.5	8.7	12.8	15.7	0.2	28.7
1995	34.3	35.9	43.8	126.2	31.8	201.8	9.6	9.8	13.3	17.2	0.1	30.6
1996	37.2	38.9	46.5	131.9	35.2	213.6	9.5	9.8	12.9	16.6	NA	29.5
1997	40.5	42.4	46.2	135.7	33.9	215.8	9.7	10.0	12.1	16.3	NA	28.4
1998	41.7	43.2	44.4	138.9	37.1	220.3	10.1	10.3	11.1	16.3	NA	27.4
1999	41.6	43.0	45.6	147.5	34.5	227.6	9.9	10.1	10.5	16.1	NA	26.6
2000	43.6	45.0	47.5	159.3	32.4	239.3	8.6	8.7	8.8	14.2	-	23.0
2001	45.0	46.3	47.2	163.2	33.0	243.5	8.3	8.4	7.8	13.3	-	21.1
2002	46.2	47.4	46.9	163.0	39.2	249.2	8.3	8.5	7.4	13.4	-	20.8
2003	47.3	48.6	43.5	171.4	40.1	255.0	7.8	7.9	5.5	13.1	-	18.6
2004	44.5	45.8	41.1	182.1	42.2	265.4	6.4	6.5	4.4	12.7	-	17.0
2005	46.4	47.5	37.5	189.8	45.8	273.2	5.9	6.0	3.2	13.5	-	16.7
2006	48.2	49.4	34.8	196.0	40.8	271.7	5.5	5.5	2.4	11.7	-	14.1
2007	47.0	47.8	34.0	195.7	46.8	276.6	5.0	5.0	2.0	11.7	-	13.7
2008	45.6	46.6	32.5	192.7	43.7	268.8	4.1	4.2	1.5	11.0	-	12.5
2009	40.5	42.2	32.4	196.8	39.3	268.5	3.5	3.5	1.3	10.2	-	11.5
2010	36.6	38.1	29.0	202.2	41.4	272.5	3.0	3.1	0.9	9.9	-	10.8
2011	32.1	33.5	24.9	204.9	30.5	260.2	2.5	2.5	0.7	8.5	-	9.2
2012	23.6	25.2	22.4	209.3	25.8	257.5	1.9	1.9	0.6	8.3	-	8.9
2013	19.3	20.9	22.7	209.2	22.3	254.2	1.6	1.6	0.6	6.7	-	7.2
2014	16.7	18.2	18.9	216.9	18.9	254.8	1.4	1.4	0.4	3.1	-	3.5
2015	20.8	21.1	18.0	224.2	19.6	261.8	1.7	1.8	0.3	2.7	-	3.1
2016	20.8	21.0	17.9	228.0	19.0	264.9	1.8	1.8	0.3	2.5	-	2.8
2017												
January	18.8	19.0	16.3	212.3	15.4	244.1	1.6	1.6	0.3	2.0	-	2.3
February	19.4	19.7	17.0	221.5	16.2	254.7	1.6	1.7	0.3	2.0	-	2.3
March	20.0	20.2	17.8	229.7	12.3	259.8	1.7	1.7	0.3	2.1	-	2.4
April	19.8	20.0	17.5	229.1	18.4	265.0	1.7	1.7	0.3	2.1	-	2.4
May	20.2	20.4	17.5	233.9	14.8	266.2	1.7	1.8	0.3	2.3	-	2.6
June	20.9	21.1	17.6	238.4	13.0	269.0	1.8	1.8	0.3	2.4	-	2.7
July	20.1	20.3	17.3	234.6	12.0	264.0	1.7	1.8	0.3	2.3	-	2.6
August	20.5	20.8	17.7	241.0	15.5	274.1	1.8	1.8	0.3	2.3	-	2.6
September	20.0	20.3	17.2	229.5	17.8	264.6	1.7	1.7	0.3	2.1	-	2.3
October	20.3	20.6	17.1	234.1	16.5	267.7	1.7	1.7	0.3	2.0	-	2.3
November	19.9	20.2	17.0	231.5	18.4	266.8	1.7	1.7	0.3	2.0	-	2.2
December	19.8	20.0	16.8	230.0	17.6	264.4	1.6	1.7	0.3	1.9	-	2.1
2017	20.0	20.2	17.2	230.5	15.6	263.4	1.7	1.7	0.3	2.1	-	2.4
2018												
January	18.5	18.7	15.9	215.9	16.4	248.3	1.5	1.5	0.2	1.7	-	2.0
February	19.2	19.5	16.8	224.3	18.9	260.1	1.6	1.6	0.2	1.8	-	2.0
March	19.7	20.0	17.3	231.3	20.4	269.0	1.7	1.7	0.2	1.8	-	2.1
April	19.6	19.8	17.5	231.0	20.6	269.0	1.6	1.6	0.3	1.9	-	2.1
May	19.8	20.1	17.3	240.2	21.5	279.0	1.7	1.7	0.2	2.0	-	2.2
June	20.5	20.8	17.4	242.1	20.4	279.8	1.7	1.7	0.2	2.0	-	2.2
July	20.0	20.3	17.3	237.2	18.3	272.7	1.7	1.7	0.2	2.0	-	2.2
August	20.7	21.0	17.6	241.8	15.5	275.0	1.7	1.7	0.2	2.0	-	2.2
September	19.8	20.1	17.1	230.0	20.7	267.8	1.7	1.7	0.2	1.8	-	2.0
October	20.3	20.6	17.0	236.1	15.9	269.0	1.7	1.7	0.2	1.7	-	1.9
November	20.2	20.5	16.7	233.2	15.2	265.1	1.7	1.7	0.2	1.7	-	1.9
December	19.8	20.0	16.6	227.2	13.5	257.2	1.6	1.6	0.2	1.6	-	1.8
2018	19.9	20.1	17.0	232.6	18.1	267.7	1.6	1.7	0.2	1.8	-	2.1
2019												
January	19.0	19.2	15.6	218.2	17.8	251.6	1.6	1.6	0.2	1.5	-	1.7
February	R19.2	R19.5	R16.4	R222.8	15.9	R255.2	1.6	1.6	0.2	1.5	-	1.7
March	19.9	20.1	16.8	229.5	15.1	261.3	1.7	1.7	0.2	1.6	-	1.8

See footnotes at end of table.

Table 7. U.S. refiner motor gasoline volumes by grade and sales type (cont.)

million gallons per day

Year month	Premium						All grades					
	Sales to end users		Sales for resale				Sales to end users		Sales for resale			
	Through retail outlets	Total[a]	DTW	Rack	Bulk	Total	Through retail outlets	Total[a]	DTW	Rack	Bulk	Total
1994	10.0	10.3	22.6	29.9	3.2	55.7	52.8	55.0	83.1	165.9	27.7	276.7
1995	9.8	10.2	20.8	31.5	4.2	56.4	53.7	55.9	77.9	174.8	36.0	288.8
1996	8.4	8.8	18.2	28.3	4.1	50.5	55.1	57.5	77.5	176.8	39.3	293.6
1997	8.4	8.8	16.9	27.6	4.0	48.5	58.7	61.1	75.1	179.6	38.0	292.7
1998	9.6	9.9	17.4	30.9	4.3	52.7	61.4	63.3	73.0	186.1	41.4	300.4
1999	8.7	8.9	16.1	31.0	5.7	52.7	60.2	62.0	72.2	194.6	40.2	306.9
2000	6.9	7.1	13.0	24.4	4.7	42.1	59.1	60.9	69.4	197.9	37.1	304.4
2001	7.1	7.3	12.3	24.6	3.7	40.6	60.4	62.0	67.4	201.1	36.7	305.2
2002	7.5	7.8	12.5	25.2	4.1	41.8	62.1	63.6	66.9	201.7	43.3	311.8
2003	7.1	7.3	10.8	23.9	3.3	38.1	62.2	63.8	59.8	208.4	43.4	311.6
2004	5.9	6.1	9.4	22.3	2.3	34.0	56.9	58.4	54.8	217.1	44.5	316.4
2005	5.2	5.4	8.0	20.9	3.0	31.9	57.5	59.0	48.7	224.2	48.9	321.8
2006	4.9	5.1	7.1	20.3	2.4	29.7	58.6	60.0	44.3	228.0	43.2	315.6
2007	4.7	4.8	6.9	20.2	2.4	29.5	56.7	57.7	43.0	227.6	49.2	319.8
2008	4.2	4.3	5.9	17.1	1.9	25.0	53.9	55.1	39.9	220.8	45.7	306.4
2009	4.0	4.1	6.3	19.1	2.1	27.4	48.0	49.8	39.9	226.1	41.4	307.4
2010	3.4	3.5	5.7	20.9	2.1	28.7	43.1	44.7	35.7	232.9	43.5	312.0
2011	2.9	3.0	4.6	20.3	2.0	26.9	37.5	39.0	30.1	233.7	32.5	296.3
2012	2.5	2.6	4.2	21.6	2.6	28.4	28.0	29.7	27.2	239.2	28.4	294.7
2013	2.2	2.3	4.3	22.7	2.6	29.6	23.0	24.7	27.6	238.6	24.8	291.0
2014	1.9	2.0	4.2	24.4	2.3	30.9	19.9	21.6	23.5	244.5	21.2	289.2
2015	2.6	2.6	4.5	27.3	2.0	33.8	25.1	25.5	22.9	254.2	21.6	298.7
2016	2.7	2.7	5.0	28.8	2.4	36.1	25.3	25.6	23.2	259.3	21.3	303.8
2017												
January	2.3	2.4	4.5	25.3	1.7	31.5	22.7	22.9	21.2	239.6	17.1	277.9
February	2.4	2.4	4.7	26.7	1.3	32.7	23.5	23.8	22.0	250.2	17.5	289.7
March	2.5	2.5	4.9	28.1	1.9	34.9	24.2	24.5	23.0	259.9	14.2	297.2
April	2.5	2.6	4.9	28.5	2.1	35.5	24.1	24.3	22.7	259.7	20.5	302.9
May	2.6	2.7	5.0	30.6	1.6	37.2	24.6	24.9	22.8	266.8	16.4	306.0
June	2.7	2.7	5.0	31.2	1.8	38.0	25.4	25.7	22.8	272.1	14.8	309.7
July	2.7	2.7	5.0	30.9	1.5	37.4	24.6	24.8	22.6	267.9	13.5	304.0
August	2.7	2.7	5.1	31.3	1.8	38.1	24.9	25.2	23.0	274.6	17.3	314.9
September	2.6	2.6	4.8	29.0	1.8	35.6	24.3	24.6	22.3	260.6	19.6	302.5
October	2.6	2.6	4.9	29.2	1.9	36.0	24.6	24.9	22.3	265.3	18.3	305.9
November	2.4	2.4	4.6	28.6	2.5	35.7	24.0	24.3	21.9	262.0	20.9	304.8
December	2.4	2.4	4.8	28.3	2.6	35.6	23.8	24.1	21.9	260.1	20.2	302.2
2017	2.5	2.6	4.9	29.0	1.9	35.7	24.2	24.5	22.4	261.6	17.5	301.5
2018												
January	2.3	2.3	4.5	26.3	2.0	32.8	22.3	22.5	20.7	244.0	18.4	283.1
February	2.3	2.3	4.7	27.3	2.0	34.0	23.1	23.4	21.8	253.4	20.8	296.0
March	2.4	2.5	4.7	28.7	1.7	35.2	23.8	24.1	22.3	261.9	22.1	306.3
April	2.4	2.4	4.9	28.7	2.2	35.8	23.5	23.8	22.6	261.5	22.8	306.9
May	2.5	2.5	4.8	30.5	1.9	37.2	24.0	24.3	22.3	272.7	23.4	318.4
June	2.5	2.6	4.8	29.9	2.8	37.5	24.7	25.1	22.4	273.9	23.2	319.5
July	2.5	2.5	4.8	30.0	2.3	37.1	24.2	24.6	22.3	269.2	20.6	312.1
August	2.6	2.6	4.9	30.5	2.0	37.3	25.0	25.4	22.8	274.2	17.5	314.5
September	2.5	2.5	4.8	28.9	1.9	35.6	24.0	24.4	22.1	260.7	22.6	305.4
October	2.4	2.4	4.7	28.6	1.9	35.2	24.3	24.7	21.9	266.4	17.9	306.2
November	2.4	2.4	4.7	28.5	1.7	34.9	24.3	24.6	21.5	263.4	16.9	301.8
December	2.5	2.5	4.7	28.2	1.9	34.9	23.9	24.2	21.5	257.0	15.4	293.9
2018	2.4	2.5	4.7	28.8	2.0	35.6	23.9	24.3	22.0	263.3	20.1	305.4
2019												
January	2.4	2.4	4.4	27.0	2.4	33.9	22.9	23.2	20.3	246.7	20.2	287.2
February	R2.4	2.5	4.6	27.7	2.3	34.7	R23.2	R23.6	R21.3	R252.1	18.2	R291.6
March	2.5	2.5	4.6	28.4	1.5	34.6	24.0	24.3	21.6	259.5	16.7	297.7

NA = Not available.

- = No data reported.

R = Revised data.

[a] Includes sales through retail outlets as well as all direct sales to end users that were not made through company-operated retail outlets, e.g., sales to agricultural customers, commercial sales, and industrial sales.

Notes: - Motor gasoline averages and totals prior to October 1993 include leaded gasoline. - Data for the 4th quarter of 1993 were derived from two separate survey systems. The DTW, Rack, and Bulk components were derived from the revised EIA-782 survey system, while the End-Use and Average Resale categories were derived from the predecessor EIA-782 survey system. Therefore, the DTW, Rack, and Bulk components are not consistent with the Average Resale category. Beginning January 1994, all data are from the revised EIA-782 survey system and are consistent. - Values shown for the current month are preliminary. Values shown for previous months are revised. Data through 2018 are final. Totals may not equal the sum of the components due to rounding.

Sources: U.S. Energy Information Administration Form EIA-782A, "Refiners'/Gas Plant Operators' Monthly Petroleum Product Sales Report."

Table 8. U.S. refiner conventional motor gasoline prices by grade and sales type

dollars per gallon excluding taxes

Year month	Regular						Midgrade					
	Sales to end users		Sales for resale				Sales to end users		Sales for resale			
	Through retail outlets	Average[a]	DTW	Rack	Bulk	Average	Through retail outlets	Average[a]	DTW	Rack	Bulk	Average
1994	0.687	0.681	0.636	0.545	0.50	0.558	0.784	0.778	0.694	NA	NA	0.627
1995	0.710	0.704	0.651	0.570	0.525	0.573	0.80	0.794	0.711	0.610	NA	0.637
1996	0.797	0.791	0.743	0.665	0.607	0.664	0.884	0.878	0.801	0.70	NA	0.726
1997	0.781	0.775	0.719	0.649	0.60	0.648	0.874	0.869	0.783	0.685	W	0.708
1998	0.611	0.606	0.551	0.473	0.439	0.473	0.704	0.70	0.613	0.511	W	0.533
1999	0.710	0.706	0.676	0.595	0.520	0.590	0.802	0.799	0.734	0.628	-	0.650
2000	1.045	1.040	0.994	0.913	0.844	0.909	1.136	1.133	1.052	0.945	-	0.964
2001	0.961	0.958	0.914	0.835	0.761	0.830	1.058	1.055	0.984	0.872	-	0.889
2002	0.893	0.891	0.836	0.791	0.723	0.782	0.985	0.981	0.906	0.829	-	0.839
2003	1.081	1.078	1.040	0.952	0.871	0.942	1.173	1.168	1.108	0.994	-	1.006
2004	1.368	1.364	1.325	1.244	1.170	1.234	1.454	1.450	1.391	1.287	-	1.296
2005	1.780	1.776	1.709	1.643	1.555	1.629	1.861	1.857	1.781	1.675	-	1.682
2006	2.062	2.060	2.054	1.925	1.864	1.918	2.166	2.164	2.134	1.972	-	1.980
2007	2.292	2.289	2.242	2.153	2.065	2.138	2.392	2.390	2.298	2.222	-	2.225
2008	2.717	2.714	2.698	2.560	2.513	2.555	2.829	2.829	2.734	2.581	-	2.586
2009	1.825	1.821	1.817	1.735	1.657	1.723	1.936	1.936	1.877	1.751	-	1.755
2010	2.244	2.239	2.244	2.139	2.065	2.128	2.361	2.361	2.336	2.160	-	2.164
2011	2.998	2.989	2.916	2.834	2.751	2.825	3.105	3.104	3.033	2.869	-	2.872
2012	3.076	3.060	2.999	2.867	2.816	2.864	3.202	3.202	3.117	2.886	-	2.890
2013	2.975	2.954	2.797	2.745	2.724	2.745	3.110	3.110	2.947	2.850	-	2.852
2014	2.775	2.753	2.706	2.558	2.502	2.556	2.932	2.931	2.858	2.703	-	2.711
2015	1.833	1.833	1.858	1.625	1.575	1.625	2.033	2.032	2.090	1.794	-	1.809
2016	1.591	1.591	1.497	1.375	1.332	1.374	1.811	1.811	1.681	1.541	-	1.549
2017												
January	1.768	1.768	1.663	1.557	1.575	1.561	2.009	2.008	1.817	1.724	-	1.730
February	1.700	1.701	1.679	1.540	1.546	1.544	1.956	1.956	1.866	1.709	-	1.719
March	1.739	1.740	1.766	1.542	W	1.546	1.994	1.992	1.961	1.715	-	1.730
April	1.858	1.858	1.831	1.635	1.594	1.636	2.099	2.094	2.003	1.811	-	1.822
May	1.803	1.803	1.781	1.563	W	1.566	2.057	2.056	1.977	1.751	-	1.764
June	1.746	1.746	1.704	1.475	W	1.480	2.005	2.004	1.906	1.662	-	1.676
July	1.721	1.721	1.709	1.532	1.488	1.534	1.967	1.967	1.877	1.714	-	1.723
August	1.807	1.806	1.803	1.632	W	1.632	2.056	2.055	1.954	1.817	-	1.825
September	2.013	2.011	1.923	1.750	W	1.748	2.279	2.273	2.048	1.948	-	1.954
October	1.905	1.904	1.792	1.661	W	1.663	2.171	2.168	1.978	1.838	-	1.847
November	1.985	1.984	1.899	1.737	W	1.741	2.235	2.231	2.058	1.902	-	1.912
December	1.900	1.899	1.815	1.651	1.700	1.658	2.158	2.155	2.006	1.812	-	1.825
2017	1.829	1.829	1.780	1.607	1.602	1.610	2.082	2.080	1.954	1.781	-	1.791
2018												
January	1.965	1.963	1.888	1.776	1.783	1.779	2.203	2.201	2.087	1.945	-	1.954
February	1.949	1.948	1.934	1.732	1.827	1.744	2.218	2.216	2.151	1.912	-	1.928
March	1.974	1.973	2.051	1.791	1.776	1.795	2.235	2.233	2.253	1.972	-	1.990
April	2.148	2.148	2.232	1.956	1.915	1.957	2.411	2.408	2.436	2.147	-	2.165
May	2.331	2.328	2.385	2.106	2.067	2.107	2.597	2.592	2.579	2.300	-	2.316
June	2.298	2.295	2.340	2.036	2.044	2.042	2.579	2.576	2.532	2.246	-	2.261
July	2.286	2.284	2.288	2.063	2.027	2.065	2.550	2.548	2.458	2.270	-	2.281
August	2.267	2.264	2.235	2.038	2.025	2.041	2.536	2.535	2.442	2.244	-	2.254
September	2.265	2.263	2.271	2.054	2.028	2.056	2.537	2.536	2.485	2.252	-	2.266
October	2.249	2.247	2.358	1.989	2.042	1.999	2.540	2.538	2.586	2.190	-	2.213
November	1.984	1.982	2.115	1.628	1.655	1.639	2.314	2.312	2.383	1.824	-	1.855
December	1.731	1.729	1.880	1.394	1.437	1.406	2.047	2.047	2.150	1.579	-	1.612
2018	2.123	2.122	2.167	1.885	1.903	1.892	2.401	2.399	2.378	2.087	-	2.104
2019												
January	1.623	1.621	1.728	1.369	1.383	1.377	1.911	1.912	2.002	1.545	-	1.569
February	R1.755	R1.751	R1.733	1.521	1.458	1.520	2.003	2.004	2.025	1.685	-	1.702
March	1.954	1.953	1.954	1.788	1.686	1.784	2.210	2.210	2.181	1.962	-	1.973

See footnotes at end of table.

Table 8. U.S. refiner conventional motor gasoline prices by grade and sales type (cont.)

dollars per gallon excluding taxes

Year month	Premium						All grades					
	Sales to end users		Sales for resale				Sales to end users		Sales for resale			
	Through retail outlets	Average[a]	DTW	Rack	Bulk	Average	Through retail outlets	Average[a]	DTW	Rack	Bulk	Average
1994	0.863	0.855	0.778	0.638	0.555	0.682	0.736	0.729	0.683	0.565	0.507	0.589
1995	0.877	0.868	0.790	0.665	0.568	0.684	0.753	0.746	0.693	0.590	0.530	0.598
1996	0.960	0.951	0.869	0.755	0.645	0.767	0.834	0.827	0.778	0.682	0.610	0.685
1997	0.954	0.946	0.856	0.742	0.641	0.753	0.819	0.813	0.756	0.666	0.604	0.668
1998	0.783	0.776	0.684	W	0.474	0.576	0.652	0.647	0.589	0.491	0.442	0.494
1999	0.872	0.865	0.801	0.679	0.558	0.681	0.748	0.743	0.711	0.611	0.525	0.609
2000	1.211	1.201	1.120	1.002	0.897	1.005	1.076	1.071	1.023	0.926	0.849	0.925
2001	1.129	1.123	1.042	0.922	0.806	0.923	0.992	0.989	0.943	0.848	0.765	0.845
2002	1.064	1.058	0.978	0.889	0.788	0.886	0.924	0.921	0.867	0.806	0.729	0.798
2003	1.253	1.245	1.178	1.051	0.925	1.050	1.109	1.105	1.067	0.965	0.874	0.957
2004	1.544	1.534	1.466	1.347	1.248	1.348	1.391	1.387	1.348	1.257	1.174	1.247
2005	1.966	1.954	1.857	1.747	1.652	1.746	1.801	1.797	1.732	1.654	1.560	1.641
2006	2.274	2.265	2.215	2.070	1.981	2.071	2.084	2.082	2.077	1.940	1.869	1.933
2007	2.502	2.494	2.415	2.328	2.181	2.317	2.313	2.309	2.267	2.172	2.070	2.156
2008	2.928	2.921	2.851	2.726	2.650	2.726	2.736	2.733	2.716	2.573	2.518	2.568
2009	2.062	2.054	2.014	1.927	1.802	1.918	1.845	1.841	1.843	1.750	1.664	1.738
2010	2.489	2.478	2.443	2.329	2.172	2.318	2.264	2.259	2.270	2.155	2.069	2.143
2011	3.230	3.219	3.105	3.035	2.864	3.018	3.016	3.008	2.939	2.851	2.758	2.841
2012	3.316	3.299	3.194	3.116	3.094	3.116	3.098	3.083	3.024	2.887	2.843	2.886
2013	3.231	3.213	3.011	3.059	3.004	3.049	2.997	2.977	2.825	2.775	2.755	2.774
2014	3.063	3.043	2.901	2.885	2.794	2.875	2.800	2.778	2.736	2.589	2.535	2.587
2015	2.216	2.210	2.085	2.016	1.812	1.999	1.869	1.869	1.899	1.663	1.599	1.663
2016	2.042	2.037	1.709	1.758	1.510	1.731	1.635	1.634	1.536	1.414	1.353	1.411
2017												
January	2.265	2.258	1.866	1.908	1.736	1.893	1.813	1.812	1.700	1.590	1.589	1.593
February	2.216	2.210	1.911	1.899	1.732	1.890	1.747	1.748	1.721	1.574	1.560	1.577
March	2.250	2.247	W	1.916	1.716	1.903	1.786	1.787	1.808	1.578	1.562	1.583
April	2.356	2.352	2.059	2.005	1.777	1.988	1.904	1.904	1.872	1.672	1.611	1.671
May	2.311	2.306	W	1.950	1.731	1.938	1.851	1.851	1.823	1.604	1.552	1.605
June	2.263	2.257	W	1.851	1.695	1.843	1.795	1.795	1.745	1.515	1.503	1.520
July	2.227	2.220	1.931	1.902	1.703	1.893	1.770	1.769	1.751	1.572	1.510	1.573
August	2.310	2.302	W	2.014	1.800	2.000	1.855	1.854	1.845	1.672	1.605	1.671
September	2.523	2.514	W	2.137	2.017	2.128	2.061	2.059	1.960	1.789	1.713	1.786
October	2.421	2.412	W	2.027	1.842	2.013	1.953	1.951	1.832	1.697	1.664	1.698
November	2.497	2.489	W	2.083	1.880	2.063	2.031	2.029	1.939	1.770	1.764	1.773
December	2.426	2.417	2.039	1.987	1.804	1.971	1.947	1.946	1.857	1.684	1.712	1.690
2017	2.338	2.331	2.002	1.973	1.792	1.961	1.876	1.876	1.821	1.643	1.622	1.646
2018												
January	2.479	2.468	2.118	2.121	1.956	2.106	2.010	2.009	1.931	1.809	1.801	1.811
February	2.493	2.482	2.176	2.086	1.943	2.078	1.997	1.996	1.980	1.766	1.838	1.777
March	2.510	2.502	2.298	2.154	1.954	2.146	2.022	2.021	2.097	1.827	1.789	1.829
April	2.683	2.676	2.484	2.337	2.141	2.325	2.197	2.196	2.278	1.993	1.936	1.994
May	2.867	2.852	2.632	2.487	2.273	2.476	2.380	2.377	2.431	2.145	2.083	2.145
June	2.848	2.832	2.570	2.425	2.201	2.404	2.348	2.345	2.383	2.074	2.064	2.079
July	2.828	2.814	2.522	2.439	2.224	2.422	2.335	2.333	2.332	2.102	2.050	2.102
August	2.814	2.798	2.477	2.418	2.185	2.403	2.317	2.314	2.280	2.077	2.043	2.079
September	2.810	2.796	2.526	2.420	2.222	2.409	2.315	2.313	2.318	2.091	2.042	2.091
October	2.823	2.806	2.617	2.366	2.188	2.363	2.300	2.297	2.406	2.025	2.056	2.035
November	2.583	2.565	2.373	2.010	1.778	2.007	2.038	2.035	2.164	1.665	1.667	1.675
December	2.322	2.306	2.133	1.745	1.533	1.744	1.784	1.782	1.930	1.428	1.449	1.440
2018	2.676	2.663	2.413	2.260	2.066	2.249	2.173	2.171	2.213	1.922	1.919	1.928
2019												
January	2.192	2.179	1.961	1.704	1.493	1.691	1.674	1.672	1.772	1.402	1.396	1.409
February	R2.279	R2.266	R1.982	1.842	1.666	1.831	R1.801	R1.798	R1.781	1.552	1.483	1.552
March	2.483	2.472	2.207	2.125	1.955	2.118	2.002	2.000	2.001	1.821	1.708	1.817

NA = Not available.

- = No data reported.

W = Withheld to avoid disclosure of individual company data.

R = Revised data.

[a] Includes sales through retail outlets as well as all direct sales to end users that were not made through company-operated retail outlets, e.g., sales to agricultural customers, commercial sales, and industrial sales.

Notes: - Beginning January 2007, oxygenated gasoline is included in conventional gasoline. - The 4th quarter of 1993 was a transitional period between the predecessor EIA-782 survey system and the revised EIA-782 survey system. The revised survey system contains additional product and sales categories, which may not be consistent with categories derived from the predecessor survey system. Beginning January 1994 all data are from the revised survey system and are consistent. Sales to end users - Values shown for the current month are preliminary. Values shown for previous months may be revised. Data through 2018 are final.

Sources: U.S. Energy Information Administration Form EIA-782A, "Refiners'/Gas Plant Operators' Monthly Petroleum Product Sales Report."

Table 9. U.S. refiner conventional motor gasoline volumes by grade and sales type

million gallons per day

Year month	Regular						Midgrade					
	Sales to end users		Sales for resale				Sales to end users		Sales for resale			
	Through retail outlets	Total[a]	DTW	Rack	Bulk	Total	Through retail outlets	Total[a]	DTW	Rack	Bulk	Total
1994	29.7	31.2	36.1	113.5	22.8	172.4	7.6	7.8	10.1	14.6	0.1	24.8
1995	24.0	25.3	19.4	105.1	26.0	150.5	6.0	6.3	5.1	13.6	0.1	18.7
1996	24.1	25.4	17.8	108.5	27.1	153.4	5.7	5.9	4.4	12.9	NA	17.3
1997	25.0	26.4	16.4	110.9	26.4	153.7	5.7	5.9	3.9	12.7	W	16.6
1998	25.4	26.6	13.7	112.0	28.8	154.5	6.0	6.1	3.4	12.5	W	15.8
1999	25.0	26.0	13.4	117.4	24.9	155.8	5.9	6.0	3.1	12.2	-	15.3
2000	26.0	27.1	12.8	125.7	23.9	162.4	4.9	5.0	2.3	10.8	-	13.1
2001	26.6	27.4	12.0	128.5	24.0	164.5	4.6	4.7	1.9	10.2	-	12.0
2002	27.2	28.0	11.3	127.9	31.0	170.2	4.7	4.8	1.6	10.4	-	11.9
2003	27.5	28.3	10.3	131.1	32.4	173.8	4.3	4.4	1.2	10.0	-	11.2
2004	26.5	27.3	9.7	136.7	36.1	182.5	3.5	3.6	0.9	9.8	-	10.8
2005	27.4	28.3	9.0	140.1	36.4	185.5	3.1	3.2	0.7	10.8	-	11.5
2006	28.9	29.8	7.3	143.7	37.4	188.4	2.9	2.9	0.5	9.3	-	9.7
2007	29.6	30.2	7.4	150.3	43.0	200.7	2.6	2.6	0.5	10.3	-	10.8
2008	28.9	29.8	7.1	144.5	39.5	191.1	2.1	2.2	0.4	9.9	-	10.3
2009	26.5	27.8	6.6	147.0	35.9	189.5	1.9	1.9	0.3	9.1	-	9.4
2010	24.9	26.2	5.9	147.6	37.1	190.7	1.7	1.7	0.2	8.7	-	8.9
2011	21.3	22.4	5.4	147.3	26.3	179.0	1.3	1.3	0.1	7.4	-	7.5
2012	14.4	15.7	5.0	149.0	21.7	175.8	0.9	0.9	0.1	7.2	-	7.4
2013	11.6	13.0	6.2	149.9	18.8	174.9	0.7	0.7	0.1	5.7	-	5.8
2014	11.1	12.5	4.3	154.9	16.8	176.0	0.6	0.6	0.1	2.1	-	2.3
2015	14.0	14.3	3.9	160.7	16.8	181.4	0.8	0.8	0.1	1.9	-	2.0
2016	14.1	14.3	4.1	163.4	15.8	183.3	0.9	0.9	0.1	1.7	-	1.8
2017												
January	12.3	12.5	3.7	151.5	13.0	168.2	0.7	0.7	0.1	1.4	-	1.5
February	12.9	13.1	3.8	158.6	13.4	175.9	0.7	0.8	0.1	1.4	-	1.5
March	13.3	13.5	W	164.4	W	178.2	0.8	0.8	0.1	1.5	-	1.6
April	13.2	13.4	4.0	163.9	15.6	183.5	0.8	0.8	0.1	1.5	-	1.6
May	13.4	13.6	W	168.2	W	184.8	0.8	0.8	0.1	1.6	-	1.7
June	13.8	14.1	W	171.5	W	186.0	0.8	0.8	0.1	1.7	-	1.8
July	13.3	13.5	4.0	169.6	9.6	183.1	0.8	0.8	0.1	1.6	-	1.7
August	13.6	13.9	W	174.5	W	191.7	0.8	0.8	0.1	1.6	-	1.7
September	13.2	13.4	W	165.1	W	184.5	0.8	0.8	0.1	1.5	-	1.5
October	13.5	13.7	W	167.7	W	184.8	0.8	0.8	0.1	1.4	-	1.5
November	13.2	13.5	W	166.0	W	184.7	0.8	0.8	0.1	1.4	-	1.5
December	13.2	13.4	3.6	164.5	14.7	182.7	0.8	0.8	0.1	1.3	-	1.4
2017	13.3	13.5	3.9	165.5	13.0	182.4	0.8	0.8	0.1	1.5	-	1.6
2018												
January	12.2	12.4	3.5	153.8	13.7	171.0	0.7	0.7	0.1	1.2	-	1.3
February	12.8	13.0	3.6	159.4	15.6	178.6	0.7	0.7	0.1	1.2	-	1.3
March	13.0	13.2	3.7	165.6	17.0	186.2	0.8	0.8	0.1	1.3	-	1.4
April	12.8	13.0	3.6	165.1	17.8	186.4	0.7	0.8	0.1	1.3	-	1.4
May	12.9	13.2	3.5	172.6	18.7	194.9	0.7	0.8	0.1	1.4	-	1.5
June	13.4	13.7	3.6	174.3	17.4	195.4	0.8	0.8	0.1	1.4	-	1.5
July	13.0	13.2	3.7	171.6	14.7	189.9	0.7	0.8	0.1	1.4	-	1.5
August	13.5	13.8	3.7	174.3	12.3	190.3	0.8	0.8	0.1	1.4	-	1.5
September	12.9	13.2	3.5	164.7	18.0	186.2	0.7	0.8	0.1	1.3	-	1.4
October	13.2	13.5	3.5	170.0	13.7	187.1	0.7	0.7	0.1	1.2	-	1.3
November	13.4	13.6	3.4	167.7	12.9	184.0	0.7	0.8	0.1	1.2	-	1.3
December	12.9	13.2	3.4	162.8	10.8	177.0	0.7	0.7	0.1	1.2	-	1.2
2018	13.0	13.3	3.5	166.9	15.2	185.6	0.7	0.8	0.1	1.3	-	1.4
2019												
January	12.4	12.7	3.2	155.9	14.8	173.9	0.7	0.7	0.1	1.1	-	1.2
February	R12.6	R12.9	R3.3	R159.1	13.0	175.3	0.7	0.7	0.1	1.1	-	1.2
March	13.0	13.3	3.5	165.7	12.4	181.6	0.7	0.8	0.1	1.2	-	1.2

See footnotes at end of table.

Table 9. U.S. refiner conventional motor gasoline volumes by grade and sales type (cont.)

million gallons per day

Year month	Premium						All grades					
	Sales to end users		Sales for resale				Sales to end users		Sales for resale			
	Through retail outlets	Total[a]	DTW	Rack	Bulk	Total	Through retail outlets	Total[a]	DTW	Rack	Bulk	Total
1994	8.5	8.9	16.5	28.0	2.8	47.2	45.8	47.9	62.7	156.0	25.8	244.5
1995	6.2	6.4	7.7	25.1	2.9	35.6	36.2	38.0	32.1	143.8	28.9	204.8
1996	4.9	5.1	5.8	22.5	2.5	30.8	34.7	36.5	28.1	143.8	29.6	201.5
1997	4.8	5.0	5.1	21.9	2.5	29.5	35.4	37.2	25.4	145.6	28.9	199.8
1998	5.5	5.7	4.7	W	2.7	31.9	36.9	38.5	21.8	148.9	31.5	202.2
1999	5.0	5.2	4.3	24.1	3.8	32.2	35.9	37.2	20.8	153.7	28.7	203.3
2000	3.7	3.9	3.1	18.6	2.8	24.5	34.7	35.9	18.2	155.1	26.7	200.0
2001	3.7	3.8	2.8	18.7	2.7	24.1	35.0	36.0	16.7	157.4	26.7	200.7
2002	3.8	4.0	2.6	19.1	3.0	24.7	35.8	36.8	15.5	157.4	34.0	206.9
2003	3.4	3.5	2.1	17.5	2.4	21.9	35.1	36.3	13.6	158.6	34.8	207.0
2004	2.6	2.8	1.6	15.8	1.7	19.2	32.6	33.7	12.3	162.3	37.8	212.4
2005	2.3	2.4	1.4	14.4	1.9	17.7	32.8	33.8	11.0	165.4	38.2	214.6
2006	2.1	2.2	1.1	13.9	1.7	16.6	33.9	35.0	8.8	166.8	39.1	214.7
2007	2.1	2.2	1.1	14.4	2.0	17.4	34.3	35.0	9.0	175.0	44.9	228.9
2008	1.8	1.9	0.9	11.7	1.5	14.2	32.9	33.9	8.4	166.2	41.0	215.6
2009	1.7	1.8	0.9	12.9	1.8	15.6	30.0	31.5	7.8	169.0	37.7	214.5
2010	1.5	1.6	0.8	13.5	1.7	15.9	28.2	29.5	6.9	169.8	38.8	215.5
2011	1.2	1.3	0.7	12.6	1.8	15.1	23.8	25.1	6.2	167.3	28.1	201.6
2012	1.0	1.1	0.7	13.2	2.4	16.2	16.3	17.7	5.8	169.5	24.1	199.4
2013	0.8	0.9	0.8	14.0	2.4	17.2	13.1	14.5	7.1	169.6	21.2	197.9
2014	0.7	0.8	0.7	15.1	2.1	17.9	12.5	14.0	5.1	172.1	18.9	196.2
2015	1.1	1.1	0.7	16.8	1.8	19.4	15.9	16.2	4.8	179.4	18.6	202.8
2016	1.1	1.2	0.8	17.7	2.1	20.6	16.1	16.4	5.0	182.8	17.9	205.7
2017												
January	0.9	0.9	0.7	15.1	1.3	17.1	13.9	14.1	4.5	168.1	14.3	186.8
February	1.0	1.0	0.8	16.0	1.0	17.8	14.6	14.8	4.7	176.1	14.4	195.2
March	1.0	1.0	W	16.9	W	19.4	15.1	15.3	5.0	182.8	11.4	199.2
April	1.0	1.0	0.8	17.3	1.6	19.8	15.0	15.3	4.8	182.7	17.3	204.9
May	1.1	1.1	W	19.0	W	21.1	15.3	15.5	4.9	188.8	14.0	207.7
June	1.1	1.1	W	19.5	W	21.8	15.8	16.0	4.9	192.6	12.1	209.7
July	1.1	1.1	0.9	19.5	1.1	21.4	15.2	15.5	4.9	190.7	10.7	206.3
August	1.1	1.1	W	19.6	W	21.9	15.5	15.8	5.0	195.8	14.6	215.3
September	1.0	1.1	W	17.8	W	20.1	15.0	15.2	4.7	184.4	17.0	206.1
October	1.0	1.0	W	17.8	W	19.9	15.3	15.5	4.7	186.8	14.7	206.2
November	1.0	1.0	W	17.3	W	20.2	15.0	15.2	4.4	184.7	17.3	206.4
December	1.0	1.0	0.8	17.0	2.0	19.8	14.9	15.1	4.4	182.8	16.6	203.9
2017	1.0	1.0	0.8	17.8	1.5	20.0	15.1	15.3	4.8	184.7	14.5	204.0
2018												
January	0.9	0.9	0.7	15.9	1.7	18.3	13.8	14.1	4.3	170.9	15.4	190.6
February	0.9	0.9	0.7	16.5	1.6	18.8	14.4	14.7	4.4	177.1	17.2	198.8
March	1.0	1.0	0.8	17.6	1.3	19.7	14.7	15.0	4.5	184.4	18.3	207.3
April	0.9	1.0	0.7	17.5	1.8	20.1	14.5	14.7	4.4	184.0	19.6	208.0
May	1.0	1.0	0.7	19.0	1.6	21.4	14.6	14.9	4.4	193.0	20.4	217.8
June	1.0	1.0	0.8	18.5	2.5	21.8	15.1	15.4	4.4	194.3	19.9	218.6
July	1.0	1.0	0.8	18.9	1.9	21.7	14.7	15.0	4.5	191.9	16.6	213.1
August	1.0	1.0	0.8	19.1	1.5	21.4	15.3	15.6	4.5	194.8	13.9	213.2
September	1.0	1.0	0.7	17.8	1.5	20.0	14.6	14.9	4.3	183.8	19.5	207.5
October	0.9	1.0	0.7	17.6	1.5	19.8	14.9	15.2	4.3	188.9	15.1	208.3
November	0.9	1.0	0.7	17.4	1.4	19.5	15.1	15.4	4.2	186.3	14.3	204.8
December	0.9	1.0	0.7	17.1	1.5	19.4	14.6	14.9	4.2	181.1	12.3	197.7
2018	1.0	1.0	0.7	17.8	1.7	20.2	14.7	15.0	4.4	185.9	16.9	207.2
2019												
January	0.9	0.9	0.7	16.4	2.0	19.0	14.0	14.3	3.9	173.4	16.8	194.1
February	R0.9	1.0	0.7	16.7	1.8	19.2	R14.2	R14.5	R4.0	R176.8	14.8	195.7
March	1.0	1.0	0.7	17.4	1.1	19.3	14.7	15.0	4.3	184.3	13.5	202.1

NA = Not available.

- = No data reported.

W = Withheld to avoid disclosure of individual company data.

R = Revised data.

[a] Includes sales through retail outlets as well as all direct sales to end users that were not made through company-operated retail outlets, e.g., sales to agricultural customers, commercial sales, and industrial sales.

Notes: - Beginning January 2007, oxygenated gasoline is included in conventional gasoline. Sales to end users Year month Sales for resale - Values shown for the current month are preliminary. Values shown for previous months are revised. Data through 2018 are final. Totals may not equal the sum of the components due to rounding. - The 4th quarter of 1993 was a transitional period between the predecessor EIA-782 survey system and the revised EIA-782 survey system. The revised survey system contains additional product and sales categories, which may not be consistent with categories derived from the predecessor survey system. Beginning January 1994 all data are from the revised survey system and are consistent.

Sources: U.S. Energy Information Administration Form EIA-782A, "Refiners'/Gas Plant Operators' Monthly Petroleum Product Sales Report."

Table 10. U.S. refiner reformulated motor gasoline prices by grade and sales type

dollars per gallon excluding taxes

Year month	Regular						Midgrade					
	Sales to end users		Sales for resale				Sales to end users		Sales for resale			
	Through retail outlets	Average[a]	DTW	Rack	Bulk	Average	Through retail outlets	Average[a]	DTW	Rack	Bulk	Average
1994	0.764	0.758	0.720	0.569	0.543	0.638	0.879	0.873	0.770	0.628	W	0.728
1995	0.749	0.744	0.707	0.605	0.573	0.650	0.836	0.833	0.753	0.651	-	0.723
1996	0.834	0.830	0.788	0.698	0.677	0.738	0.924	0.921	0.837	0.741	W	0.809
1997	0.830	0.828	0.787	0.682	0.668	0.731	0.928	0.925	0.840	0.725	W	0.807
1998	0.668	0.665	0.616	0.509	0.484	0.557	0.769	0.767	0.673	0.553	W	0.638
1999	0.804	0.80	0.752	0.642	0.601	0.686	0.895	0.892	0.807	0.676	NA	0.767
2000	1.126	1.123	1.058	0.978	0.953	1.012	1.219	1.217	1.114	1.014	-	1.085
2001	1.059	1.056	1.001	0.893	0.856	0.938	1.166	1.163	1.061	0.942	-	1.027
2002	0.946	0.944	0.906	0.834	0.779	0.861	1.052	1.050	0.988	0.875	-	0.958
2003	1.196	1.192	1.168	1.006	0.962	1.069	1.293	1.290	1.224	1.047	-	1.165
2004	1.472	1.470	1.447	1.299	1.248	1.353	1.572	1.570	1.494	1.340	-	1.436
2005	1.850	1.848	1.787	1.682	1.619	1.711	1.945	1.944	1.834	1.726	-	1.789
2006	2.166	2.164	2.097	2.002	1.885	2.030	2.275	2.274	2.170	2.078	-	2.129
2007	2.362	2.360	2.288	2.186	2.175	2.221	2.490	2.489	2.368	2.256	-	2.316
2008	2.812	2.810	2.703	2.553	2.642	2.607	2.934	2.934	2.788	2.652	-	2.721
2009	1.927	1.925	1.878	1.770	1.782	1.806	2.066	2.066	1.981	1.855	-	1.914
2010	2.342	2.339	2.265	2.159	2.141	2.188	2.485	2.485	2.362	2.229	-	2.280
2011	3.089	3.085	2.973	2.874	2.831	2.895	3.233	3.233	3.062	2.954	-	2.990
2012	3.219	3.212	3.111	2.956	2.947	2.988	3.372	3.372	3.213	3.047	-	3.098
2013	3.110	3.101	2.948	2.830	2.869	2.856	3.268	3.268	3.066	2.939	-	2.979
2014	2.946	2.938	2.784	2.614	2.663	2.647	3.111	3.111	2.920	2.746	-	2.788
2015	2.159	2.158	2.174	1.728	1.775	1.807	2.404	2.404	2.321	1.892	-	1.989
2016	1.808	1.807	1.762	1.433	1.462	1.490	2.047	2.047	1.913	1.579	-	1.655
2017												
January	1.952	1.951	1.868	1.604	1.625	1.649	2.195	2.194	2.020	1.744	-	1.807
February	1.954	1.953	1.960	1.609	1.665	1.670	2.225	2.225	2.151	1.774	-	1.861
March	2.000	1.999	2.023	1.615	W	1.685	2.275	2.274	2.180	1.782	-	1.873
April	2.060	2.059	2.052	1.724	1.740	1.779	2.303	2.303	2.217	1.876	-	1.952
May	2.050	2.050	2.071	1.679	W	1.745	2.309	2.309	2.231	1.828	-	1.914
June	1.992	1.991	1.984	1.563	W	1.634	2.260	2.260	2.101	1.711	-	1.793
July	1.942	1.941	1.917	1.620	1.637	1.670	2.194	2.193	2.082	1.759	-	1.825
August	2.021	2.021	2.009	1.691	W	1.745	2.276	2.276	2.189	1.833	-	1.905
September	2.215	2.213	2.143	1.798	W	1.857	2.473	2.473	2.286	1.949	-	2.021
October	2.096	2.095	2.032	1.690	W	1.747	2.352	2.352	2.186	1.829	-	1.907
November	2.190	2.188	2.073	1.778	W	1.828	2.438	2.438	2.235	1.910	-	1.980
December	2.092	2.091	1.962	1.691	1.763	1.737	2.345	2.345	2.101	1.815	-	1.879
2017	2.048	2.047	2.009	1.672	1.717	1.729	2.303	2.303	2.164	1.815	-	1.891
2018												
January	2.183	2.182	2.116	1.829	1.907	1.878	2.437	2.437	2.305	1.973	-	2.049
February	2.247	2.246	2.211	1.795	1.888	1.866	2.534	2.534	2.389	1.954	-	2.053
March	2.284	2.282	2.300	1.892	1.948	1.961	2.572	2.572	2.505	2.059	-	2.160
April	2.416	2.415	2.458	2.060	2.132	2.129	2.684	2.684	2.626	2.217	-	2.313
May	2.591	2.590	2.591	2.227	2.246	2.287	2.849	2.849	2.734	2.366	-	2.447
June	2.576	2.575	2.544	2.141	2.174	2.208	2.840	2.840	2.653	2.271	-	2.354
July	2.522	2.522	2.489	2.141	2.160	2.199	2.781	2.781	2.641	2.272	-	2.355
August	2.500	2.499	2.446	2.093	2.127	2.153	2.764	2.764	2.600	2.220	-	2.301
September	2.512	2.511	2.532	2.106	2.171	2.179	2.791	2.791	2.708	2.259	-	2.360
October	2.569	2.568	2.652	2.048	2.167	2.152	2.873	2.873	2.799	2.233	-	2.361
November	2.375	2.373	2.373	1.682	1.813	1.799	2.713	2.713	2.462	1.857	-	1.997
December	2.164	2.163	2.140	1.504	1.548	1.610	2.496	2.496	2.265	1.695	-	1.825
2018	2.417	2.416	2.409	1.964	2.029	2.039	2.699	2.699	2.562	2.126	-	2.224
2019												
January	2.038	2.036	2.049	1.494	1.527	1.584	2.355	2.355	2.207	1.689	-	1.807
February	2.088	2.086	2.109	1.639	1.684	1.718	2.380	2.380	2.326	1.841	-	1.956
March	2.258	2.257	2.280	1.902	1.918	1.965	2.539	2.539	2.479	2.083	-	2.173

See footnotes at end of table.

Table 10. U.S. refiner reformulated motor gasoline prices by grade and sales type (cont.)

dollars per gallon excluding taxes

Year month	Premium						All grades					
	Sales to end users		Sales for resale				Sales to end users		Sales for resale			
	Through retail outlets	Average[a]	DTW	Rack	Bulk	Average	Through retail outlets	Average[a]	DTW	Rack	Bulk	Average
1994	0.966	0.958	0.861	0.677	0.558	0.777	0.831	0.824	0.771	0.599	0.547	0.687
1995	0.929	0.924	0.841	0.704	0.616	0.785	0.808	0.803	0.756	0.632	0.582	0.696
1996	1.002	0.998	0.910	0.791	0.709	0.859	0.882	0.878	0.828	0.720	0.682	0.774
1997	1.005	1.003	0.910	0.775	0.686	0.853	0.876	0.874	0.825	0.703	0.671	0.767
1998	0.847	0.845	0.741	W	0.516	0.680	0.717	0.714	0.657	0.529	0.489	0.593
1999	0.966	0.963	0.870	0.717	0.639	0.798	0.845	0.841	0.788	0.658	0.608	0.718
2000	1.297	1.291	1.189	1.064	0.972	1.125	1.164	1.160	1.092	0.993	0.957	1.039
2001	1.239	1.234	1.133	0.983	0.890	1.065	1.10	1.096	1.034	0.909	0.859	0.966
2002	1.124	1.119	1.046	0.930	0.832	0.991	0.987	0.985	0.944	0.851	0.785	0.891
2003	1.366	1.362	1.292	1.099	1.028	1.201	1.233	1.229	1.197	1.021	0.969	1.097
2004	1.655	1.652	1.574	1.399	1.348	1.489	1.510	1.507	1.474	1.313	1.257	1.378
2005	2.031	2.029	1.912	1.791	1.766	1.847	1.883	1.881	1.812	1.697	1.635	1.733
2006	2.369	2.367	2.239	2.149	2.004	2.183	2.202	2.20	2.125	2.020	1.906	2.055
2007	2.601	2.599	2.468	2.367	2.346	2.415	2.404	2.402	2.322	2.208	2.192	2.250
2008	3.003	3.001	2.845	2.70	2.826	2.772	2.845	2.843	2.728	2.569	2.659	2.629
2009	2.177	2.174	2.067	1.968	1.899	2.011	1.971	1.969	1.913	1.793	1.791	1.834
2010	2.587	2.584	2.446	2.343	2.247	2.380	2.386	2.383	2.299	2.182	2.150	2.215
2011	3.334	3.331	3.145	3.067	2.940	3.090	3.132	3.128	3.003	2.898	2.837	2.921
2012	3.478	3.473	3.288	3.201	3.175	3.225	3.265	3.259	3.143	2.986	2.961	3.020
2013	3.371	3.365	3.132	3.103	3.071	3.110	3.160	3.152	2.982	2.866	2.882	2.892
2014	3.206	3.202	2.949	2.867	2.642	2.886	3.005	2.996	2.818	2.648	2.661	2.682
2015	2.516	2.516	2.357	2.066	2.145	2.144	2.242	2.240	2.214	1.777	1.799	1.860
2016	2.201	2.201	1.986	1.755	1.710	1.816	1.900	1.899	1.814	1.481	1.484	1.543
2017												
January	2.359	2.359	2.104	1.908	1.833	1.957	2.044	2.043	1.924	1.648	1.658	1.699
February	2.391	2.390	2.210	1.922	NA	2.000	2.054	2.053	2.019	1.655	1.697	1.723
March	2.439	2.439	W	1.928	W	2.016	2.101	2.100	2.077	1.661	1.698	1.739
April	2.468	2.468	2.286	2.031	1.992	2.097	2.154	2.153	2.108	1.769	1.772	1.831
May	2.478	2.478	W	1.985	W	2.068	2.149	2.148	2.127	1.726	1.728	1.799
June	2.428	2.427	W	1.876	W	1.959	2.092	2.091	2.034	1.611	1.668	1.688
July	2.357	2.356	2.155	1.930	1.933	1.988	2.038	2.037	1.974	1.668	1.674	1.723
August	2.440	2.440	W	1.998	W	2.065	2.117	2.117	2.068	1.737	1.779	1.798
September	2.640	2.640	W	2.116	W	2.184	2.310	2.309	2.198	1.846	1.895	1.911
October	2.517	2.517	W	1.980	W	2.052	2.191	2.191	2.089	1.734	1.750	1.797
November	2.598	2.598	W	2.048	W	2.115	2.280	2.279	2.129	1.818	1.842	1.874
December	2.505	2.505	2.191	1.958	1.866	2.013	2.184	2.183	2.016	1.730	1.782	1.783
2017	2.468	2.468	2.243	1.974	1.960	2.043	2.143	2.142	2.064	1.717	1.747	1.781
2018												
January	2.602	2.602	2.368	2.106	2.170	2.175	2.275	2.274	2.175	1.869	1.936	1.926
February	2.703	2.703	2.458	2.088	2.146	2.185	2.348	2.347	2.269	1.838	1.915	1.917
March	2.738	2.738	2.566	2.185	2.224	2.283	2.386	2.385	2.361	1.935	1.975	2.013
April	2.855	2.855	2.695	2.350	2.393	2.442	2.511	2.510	2.513	2.102	2.167	2.180
May	3.008	3.008	2.819	2.500	2.549	2.582	2.683	2.682	2.643	2.267	2.275	2.335
June	3.000	3.000	2.756	2.412	2.404	2.500	2.669	2.668	2.593	2.181	2.198	2.254
July	2.942	2.942	2.720	2.426	2.412	2.501	2.615	2.615	2.542	2.183	2.184	2.247
August	2.925	2.925	2.685	2.362	2.329	2.445	2.594	2.593	2.501	2.133	2.149	2.200
September	2.953	2.953	2.779	2.393	2.411	2.494	2.611	2.610	2.589	2.148	2.204	2.230
October	3.051	3.051	2.882	2.352	2.445	2.491	2.673	2.672	2.705	2.093	2.213	2.206
November	2.881	2.881	2.573	1.980	2.033	2.133	2.489	2.487	2.419	1.726	1.840	1.853
December	2.664	2.664	2.356	1.798	1.810	1.942	2.279	2.278	2.191	1.548	1.584	1.665
2018	2.864	2.864	2.641	2.249	2.277	2.351	2.516	2.515	2.463	2.006	2.058	2.090
2019												
January	2.532	2.532	2.280	1.780	1.801	1.908	2.151	2.149	2.103	1.536	1.562	1.637
February	2.550	2.550	2.371	1.930	1.927	2.042	2.194	2.192	2.171	R1.683	1.719	1.772
March	2.706	2.706	2.537	2.186	2.151	2.274	2.361	2.359	2.339	1.944	1.950	2.016

NA = Not available.

- = No data reported.

W = Withheld to avoid disclosure of individual company data.

[a] Includes sales through retail outlets as well as all direct sales to end users that were not made through company-operated retail outlets, e.g., sales to agricultural customers, commercial sales, and industrial sales.

Notes: - Values shown for the current month are preliminary. Values shown for previous months may be revised. Data through 2018 are final.

Sources: U.S. Energy Information Administration Form EIA-782A, "Refiners'/Gas Plant Operators' Monthly Petroleum Product Sales Report."

Table 11. U.S. refiner reformulated motor gasoline volumes by grade and sales type

million gallons per day

Year month	Regular						Midgrade					
	Sales to end users		Sales for resale				Sales to end users		Sales for resale			
	Through retail outlets	Total[a]	DTW	Rack	Bulk	Total	Through retail outlets	Total[a]	DTW	Rack	Bulk	Total
1994	0.6	0.6	2.1	1.6	0.6	4.3	0.2	0.2	0.7	0.3	W	1.0
1995	7.8	8.1	20.7	W	W	43.3	3.0	3.1	7.4	3.1	-	10.5
1996	10.7	11.1	26.1	20.5	8.0	54.6	3.3	3.4	7.9	3.3	W	11.3
1997	13.4	13.8	28.0	21.7	7.6	57.3	3.6	3.7	7.9	3.1	W	11.0
1998	14.3	14.5	28.6	23.0	8.3	59.9	3.7	3.8	7.4	3.1	W	10.5
1999	14.5	14.8	29.8	26.1	9.6	65.5	3.6	3.7	7.0	3.1	NA	10.2
2000	15.5	15.9	32.1	29.1	8.5	69.6	3.3	3.4	6.2	2.6	-	8.8
2001	16.3	16.7	32.7	30.0	9.0	71.7	3.3	3.3	5.7	2.2	-	7.9
2002	16.9	17.2	33.1	30.4	8.2	71.7	3.3	3.3	5.6	2.1	-	7.6
2003	17.7	18.0	30.9	35.1	7.6	73.6	3.1	3.1	4.1	2.0	-	6.1
2004	16.2	16.5	29.5	39.7	6.1	75.3	2.6	2.6	3.3	2.0	-	5.2
2005	17.1	17.4	27.5	43.5	9.5	80.4	2.6	2.6	2.5	1.8	-	4.2
2006	17.7	18.0	26.8	45.7	3.4	75.9	2.5	2.5	1.9	1.5	-	3.4
2007	17.4	17.6	26.7	45.4	3.8	75.9	2.4	2.4	1.6	1.3	-	2.9
2008	16.6	16.9	25.4	48.1	4.2	77.7	2.0	2.0	1.1	1.1	-	2.2
2009	14.0	14.3	25.8	49.8	3.4	79.0	1.7	1.7	1.0	1.1	-	2.1
2010	11.7	11.9	23.1	54.5	4.2	81.9	1.3	1.3	0.7	1.2	-	1.9
2011	10.8	11.1	19.5	57.6	4.2	81.3	1.2	1.2	0.5	1.1	-	1.6
2012	9.2	9.5	17.4	60.3	4.0	81.7	1.0	1.0	0.5	1.0	-	1.5
2013	7.6	7.9	16.5	59.3	3.5	79.3	0.9	0.9	0.4	1.0	-	1.4
2014	5.5	5.7	14.6	62.0	2.1	78.8	0.7	0.7	0.3	0.9	-	1.2
2015	6.8	6.8	14.1	63.5	2.8	80.3	0.9	0.9	0.2	0.8	-	1.1
2016	6.7	6.7	13.9	64.6	3.1	81.6	0.9	0.9	0.2	0.8	-	1.0
2017												
January	6.4	6.5	12.7	60.8	2.4	75.9	0.9	0.9	0.2	0.6	-	0.8
February	6.5	6.5	13.2	62.8	2.8	78.8	0.9	0.9	0.2	0.6	-	0.8
March	6.7	6.7	W	65.3	W	81.6	0.9	0.9	0.2	0.7	-	0.8
April	6.6	6.6	13.5	65.2	2.8	81.5	0.9	0.9	0.2	0.7	-	0.9
May	6.8	6.8	W	65.6	W	81.3	0.9	0.9	0.2	0.7	-	0.9
June	7.0	7.1	W	67.0	W	83.0	1.0	1.0	0.2	0.7	-	0.9
July	6.8	6.8	13.3	65.1	2.5	80.9	1.0	1.0	0.2	0.7	-	0.9
August	6.9	6.9	W	66.4	W	82.5	1.0	1.0	0.2	0.7	-	0.9
September	6.9	6.9	W	64.4	W	80.1	0.9	0.9	0.2	0.6	-	0.8
October	6.9	6.9	W	66.4	W	82.8	0.9	0.9	0.2	0.6	-	0.8
November	6.7	6.7	W	65.5	W	82.1	0.9	0.9	0.2	0.6	-	0.7
December	6.6	6.6	13.2	65.5	2.9	81.6	0.9	0.9	0.2	0.6	-	0.7
2017	6.7	6.8	13.4	65.0	2.6	81.0	0.9	0.9	0.2	0.6	-	0.8
2018												
January	6.3	6.3	12.5	62.1	2.7	77.3	0.8	0.8	0.2	0.5	-	0.7
February	6.5	6.5	13.3	64.9	3.3	81.4	0.9	0.9	0.2	0.5	-	0.7
March	6.8	6.8	13.7	65.8	3.4	82.8	0.9	0.9	0.2	0.5	-	0.7
April	6.8	6.8	13.9	65.9	2.8	82.6	0.9	0.9	0.2	0.5	-	0.7
May	6.9	7.0	13.8	67.6	2.8	84.1	0.9	0.9	0.2	0.6	-	0.7
June	7.2	7.2	13.8	67.8	3.0	84.5	0.9	0.9	0.2	0.6	-	0.7
July	7.1	7.1	13.6	65.6	3.6	82.8	0.9	0.9	0.2	0.6	-	0.7
August	7.2	7.2	14.0	67.5	3.2	84.7	1.0	1.0	0.2	0.6	-	0.7
September	7.0	7.0	13.6	65.3	2.7	81.7	0.9	0.9	0.1	0.5	-	0.7
October	7.1	7.1	13.5	66.1	2.3	81.9	0.9	0.9	0.1	0.5	-	0.6
November	6.9	6.9	13.2	65.5	2.3	81.0	0.9	0.9	0.1	0.5	-	0.6
December	6.9	6.9	13.2	64.4	2.7	80.2	0.9	0.9	0.1	0.4	-	0.6
2018	6.9	6.9	13.5	65.7	2.9	82.1	0.9	0.9	0.2	0.5	-	0.7
2019												
January	6.5	6.5	12.5	62.3	3.0	77.7	0.9	0.9	0.1	0.4	-	0.5
February	6.6	6.6	13.2	63.8	2.9	79.8	0.9	0.9	0.1	0.4	-	0.5
March	6.8	6.9	13.2	63.8	2.8	79.8	0.9	0.9	0.1	0.4	-	0.5

See footnotes at end of table.

Table 11. U.S. refiner reformulated motor gasoline volumes by grade and sales type (cont.)

million gallons per day

Year month	Premium						All grades					
	Sales to end users		Sales for resale				Sales to end users		Sales for resale			
	Through retail outlets	Total[a]	DTW	Rack	Bulk	Total	Through retail outlets	Total[a]	DTW	Rack	Bulk	Total
1994	0.2	0.2	1.2	0.5	0.2	1.9	1.0	1.0	4.0	2.4	0.8	7.2
1995	3.1	3.2	12.0	W	W	18.9	14.0	14.4	40.1	25.9	6.6	72.6
1996	3.1	3.2	11.7	5.3	1.5	18.6	17.0	17.6	45.7	29.2	9.6	84.5
1997	3.4	3.5	11.5	5.3	1.5	18.2	20.3	21.0	47.4	30.1	9.1	86.6
1998	3.8	3.9	12.2	W	1.6	19.8	21.8	22.2	48.2	32.0	9.9	90.1
1999	3.4	3.5	11.4	6.3	1.9	19.6	21.5	22.0	48.2	35.6	11.5	95.2
2000	3.0	3.1	9.6	5.4	1.9	16.8	21.9	22.4	47.9	37.0	10.4	95.2
2001	3.2	3.2	9.2	5.4	1.1	15.7	22.7	23.3	47.7	37.6	10.0	95.3
2002	3.4	3.5	9.5	5.6	1.1	16.3	23.6	24.1	48.2	38.0	9.3	95.6
2003	3.5	3.6	8.5	5.9	1.0	15.3	24.2	24.7	43.5	43.0	8.6	95.1
2004	3.1	3.1	7.4	6.0	0.6	14.1	21.9	22.3	40.2	47.7	6.7	94.6
2005	2.8	2.8	6.5	6.0	1.2	13.6	22.6	22.9	36.4	51.2	10.6	98.3
2006	2.7	2.7	5.9	5.9	0.7	12.5	22.9	23.2	34.6	53.1	4.1	91.8
2007	2.6	2.7	5.8	5.9	0.4	12.1	22.4	22.7	34.0	52.6	4.3	90.9
2008	2.4	2.4	5.0	5.4	0.4	10.8	21.0	21.3	31.5	54.6	4.6	90.8
2009	2.3	2.3	5.3	6.1	0.3	11.8	17.9	18.3	32.1	57.1	3.7	92.9
2010	1.9	1.9	4.9	7.4	0.4	12.7	14.9	15.2	28.8	63.1	4.7	96.5
2011	1.7	1.7	3.9	7.7	0.2	11.8	13.7	13.9	23.9	66.4	4.4	94.7
2012	1.5	1.5	3.5	8.4	0.3	12.1	11.7	12.0	21.4	69.7	4.3	95.4
2013	1.4	1.4	3.5	8.7	0.2	12.4	9.9	10.2	20.5	69.0	3.7	93.1
2014	1.2	1.2	3.5	9.4	0.2	13.0	7.5	7.7	18.4	72.3	2.3	93.0
2015	1.5	1.5	3.8	10.4	0.2	14.4	9.2	9.2	18.1	74.7	3.0	95.8
2016	1.6	1.6	4.1	11.1	0.3	15.5	9.2	9.2	18.2	76.5	3.4	98.1
2017												
January	1.4	1.4	3.8	10.1	0.4	14.4	8.8	8.8	16.6	71.5	2.9	91.0
February	1.5	1.5	4.0	10.6	0.3	14.9	8.9	8.9	17.3	74.1	3.1	94.5
March	1.5	1.5	W	11.1	W	15.5	9.1	9.2	18.0	77.1	2.8	98.0
April	1.5	1.5	4.1	11.2	0.4	15.7	9.0	9.1	17.9	77.0	3.2	98.1
May	1.6	1.6	W	11.7	W	16.1	9.3	9.3	17.9	78.0	2.4	98.3
June	1.6	1.6	W	11.8	W	16.2	9.6	9.6	17.9	79.5	2.7	100.1
July	1.6	1.6	4.1	11.5	0.3	16.0	9.3	9.4	17.7	77.3	2.8	97.7
August	1.6	1.6	W	11.7	W	16.2	9.4	9.4	18.0	78.8	2.7	99.6
September	1.5	1.5	W	11.2	W	15.5	9.3	9.3	17.6	76.2	2.6	96.4
October	1.5	1.5	W	11.5	W	16.1	9.4	9.4	17.6	78.5	3.7	99.7
November	1.5	1.5	W	11.3	W	15.5	9.0	9.0	17.5	77.3	3.6	98.4
December	1.5	1.5	4.0	11.2	0.6	15.9	8.9	9.0	17.4	77.3	3.5	98.3
2017	1.5	1.5	4.1	11.2	0.4	15.7	9.2	9.2	17.6	76.9	3.0	97.5
2018												
January	1.3	1.3	3.8	10.4	0.3	14.5	8.4	8.5	16.4	73.1	3.1	92.5
February	1.4	1.4	3.9	10.8	0.4	15.2	8.7	8.7	17.4	76.3	3.6	97.3
March	1.5	1.5	3.9	11.2	0.4	15.5	9.2	9.2	17.8	77.5	3.8	99.0
April	1.4	1.4	4.1	11.1	0.4	15.7	9.1	9.1	18.2	77.6	3.2	99.0
May	1.5	1.5	4.0	11.5	0.3	15.8	9.3	9.4	17.9	79.6	3.1	100.6
June	1.5	1.5	4.0	11.4	0.4	15.7	9.6	9.7	17.9	79.7	3.3	100.9
July	1.5	1.5	4.0	11.1	0.4	15.5	9.5	9.5	17.8	77.2	4.0	99.0
August	1.6	1.6	4.1	11.4	0.4	15.9	9.7	9.7	18.2	79.4	3.6	101.3
September	1.5	1.5	4.0	11.1	0.4	15.6	9.4	9.5	17.8	76.9	3.1	97.9
October	1.5	1.5	3.9	11.0	0.5	15.4	9.5	9.5	17.6	77.5	2.7	97.9
November	1.5	1.5	3.9	11.1	0.3	15.3	9.2	9.3	17.3	77.1	2.6	97.0
December	1.5	1.5	4.0	11.1	0.4	15.5	9.3	9.3	17.3	75.9	3.1	96.3
2018	1.5	1.5	4.0	11.1	0.4	15.5	9.3	9.3	17.6	77.3	3.3	98.2
2019												
January	1.5	1.5	3.8	10.6	0.4	14.8	8.8	8.9	16.4	73.3	3.4	93.0
February	1.5	1.5	3.9	11.1	0.5	15.5	9.0	R9.0	17.2	75.3	3.4	R95.9
March	1.6	1.6	3.9	11.0	0.4	15.3	9.3	9.3	17.2	75.2	3.2	95.6

NA = Not available.

- = No data reported.

W = Withheld to avoid disclosure of individual company data.

[a] Includes sales through retail outlets as well as all direct sales to end users that were not made through company-operated retail outlets, e.g., sales to agricultural customers, commercial sales, and industrial sales.

Notes: - Values shown for the current month are preliminary. Values shown for previous months are revised. Data through 2018 are final. Totals may not equal the sum of the components due to rounding.

Sources: U.S. Energy Information Administration Form EIA-782A, "Refiners'/Gas Plant Operators' Monthly Petroleum Product Sales Report."

Table 16. U.S. refiner residual fuel oil prices

dollars per gallon excluding taxes

Year month	Sulfur less than or equal to 1%		Sulfur greater than 1%		Average	
	Sales to end users	Sales for resale	Sales to end users	Sales for resale	Sales to end users	Sales for resale
1994	0.401	0.345	0.330	0.287	0.352	0.317
1995	0.436	0.383	0.377	0.338	0.392	0.363
1996	0.526	0.456	0.433	0.389	0.455	0.420
1997	0.488	0.415	0.403	0.366	0.423	0.387
1998	0.354	0.299	0.287	0.269	0.305	0.280
1999	0.405	0.382	0.362	0.329	0.374	0.354
2000	0.708	0.627	0.566	0.512	0.602	0.566
2001	0.642	0.523	0.492	0.428	0.531	0.476
2002	0.640	0.546	0.544	0.508	0.569	0.530
2003	0.804	0.728	0.651	0.588	0.698	0.661
2004	0.835	0.764	0.692	0.601	0.739	0.681
2005	1.168	1.115	0.974	0.842	1.048	0.971
2006	1.342	1.202	1.173	1.085	1.218	1.136
2007	1.436	1.406	1.350	1.314	1.374	1.350
2008	2.144	1.918	1.889	1.843	1.964	1.866
2009	1.413	1.337	1.306	1.344	1.341	1.342
2010	1.920	1.756	1.619	1.679	1.713	1.697
2011	2.736	2.389	2.257	2.316	2.401	2.336
2012	3.025	2.548	2.433	2.429	2.592	2.457
2013	2.883	2.363	2.353	2.249	2.482	2.278
2014	2.694	2.153	2.221	1.996	2.325	2.044
2015	1.529	0.971	1.227	0.999	1.285	0.996
2016	1.138	0.736	0.897	0.746	0.945	0.745
2017						
January	W	1.099	1.249	1.121	1.309	1.119
February	W	1.174	1.243	1.115	1.291	1.121
March	W	1.103	1.186	1.075	1.239	1.077
April	W	1.038	1.147	1.039	1.201	1.039
May	W	0.986	1.153	1.047	1.213	1.043
June	W	0.937	1.129	0.995	1.195	0.991
July	W	1.026	1.154	1.040	1.211	1.039
August	W	1.042	1.142	1.081	1.204	1.079
September	W	1.150	1.295	1.137	1.314	1.138
October	W	1.153	1.249	1.178	1.304	1.176
November	W	1.302	1.384	1.277	1.413	1.279
December	W	1.254	1.447	1.249	1.484	1.249
2017	W	1.112	1.237	1.117	1.287	1.116
2018						
January	W	1.301	1.476	1.311	1.507	1.310
February	W	1.221	1.415	1.325	1.490	1.319
March	W	1.227	1.386	1.306	1.452	1.302
April	W	1.311	1.438	1.349	1.504	1.348
May	W	1.462	1.615	1.501	1.667	1.500
June	W	1.487	1.643	1.558	1.731	1.553
July	W	1.543	1.709	1.583	1.767	1.581
August	W	1.499	1.680	1.552	1.764	1.549
September	W	1.520	1.696	1.561	1.761	1.560
October	W	1.620	1.816	1.703	1.875	1.700
November	W	1.360	1.731	1.562	1.827	1.556
December	W	1.252	1.467	1.295	1.608	1.293
2018	W	1.397	1.587	1.466	1.662	1.463
2019						
January	W	1.626	1.417	1.326	1.425	1.357
February	W	1.808	1.553	1.458	1.568	1.508
March	W	W	1.607	1.542	1.623	1.572

NA = Not available.

R = Revised data.

Notes: - Values shown for the current month are preliminary. Values shown for previous months may be revised. Data through 2018 are final.

Sources: U.S. Energy Information Administration Form EIA-782A, "Refiners'/Gas Plant Operators' Monthly Petroleum Product Sales Report."

Table 17. U.S. refiner residual fuel oil volumes

million gallons per day

Year month	Sulfur less than or equal to 1%		Sulfur greater than 1%		Total	
	Sales to end users	Sales for resale	Sales to end users	Sales for resale	Sales to end users	Sales for resale
1994	4.2	6.6	9.3	6.2	13.5	12.8
1995	2.9	7.7	8.7	5.9	11.6	13.6
1996	3.1	6.3	9.8	7.4	12.9	13.8
1997	3.2	4.8	10.3	6.7	13.4	11.5
1998	3.9	5.7	10.5	9.6	14.4	15.4
1999	3.9	5.3	10.0	6.2	13.9	11.5
2000	3.3	4.9	9.8	5.6	13.1	10.5
2001	3.8	5.2	11.0	5.1	14.8	10.3
2002	2.7	5.1	7.8	3.7	10.4	8.8
2003	3.3	3.5	7.4	3.2	10.7	6.7
2004	3.4	2.9	6.8	3.0	10.2	5.9
2005	4.0	2.2	6.4	2.5	10.4	4.7
2006	2.8	2.8	7.6	3.6	10.4	6.5
2007	3.1	3.2	7.8	5.0	10.9	8.2
2008	2.5	2.9	5.9	6.6	8.4	9.5
2009	2.8	2.9	5.7	6.9	8.5	9.8
2010	2.4	2.6	5.2	8.1	7.6	10.7
2011	1.9	3.4	4.5	8.8	6.4	12.2
2012	1.5	2.1	4.0	6.8	5.5	8.8
2013	1.3	2.3	3.9	6.7	5.2	9.0
2014	1.0	2.4	3.6	5.6	4.6	8.0
2015	0.8	0.9	3.3	7.1	4.0	8.1
2016	0.8	0.8	3.3	7.6	4.2	8.4
2017						
January	W	0.5	W	6.2	3.9	6.6
February	W	0.6	W	5.6	4.4	6.2
March	W	0.4	W	5.5	4.6	5.9
April	W	0.3	W	5.9	3.8	6.2
May	W	0.3	W	5.5	3.8	5.9
June	W	0.5	W	7.6	3.7	8.2
July	W	0.6	W	5.7	3.4	6.3
August	W	0.4	W	8.1	3.7	8.4
September	W	0.7	W	7.2	4.1	7.8
October	W	0.6	W	7.8	3.5	8.4
November	W	0.6	W	6.6	4.3	7.2
December	W	0.3	W	7.7	4.6	8.1
2017	W	0.5	W	6.6	4.0	7.1
2018						
January	W	0.4	W	8.5	3.7	8.9
February	W	0.4	W	7.2	3.6	7.7
March	W	0.4	W	7.0	3.6	7.4
April	W	0.3	W	6.7	3.5	7.0
May	W	0.4	W	8.0	3.2	8.4
June	W	0.6	W	7.4	3.0	8.1
July	W	0.5	W	6.8	3.5	7.3
August	W	0.5	W	7.1	3.2	7.6
September	W	0.2	W	7.6	3.6	7.8
October	W	0.2	W	7.0	3.8	7.3
November	W	0.2	W	6.5	3.4	6.7
December	W	0.5	W	6.8	3.5	7.3
2018	W	0.4	W	7.2	3.5	7.6
2019						
January	W	0.8	W	7.0	2.8	7.9
February	W	1.1	W	6.5	2.3	7.6
March	W	W	W	W	2.2	6.7

NA = Not available.

R = Revised data.

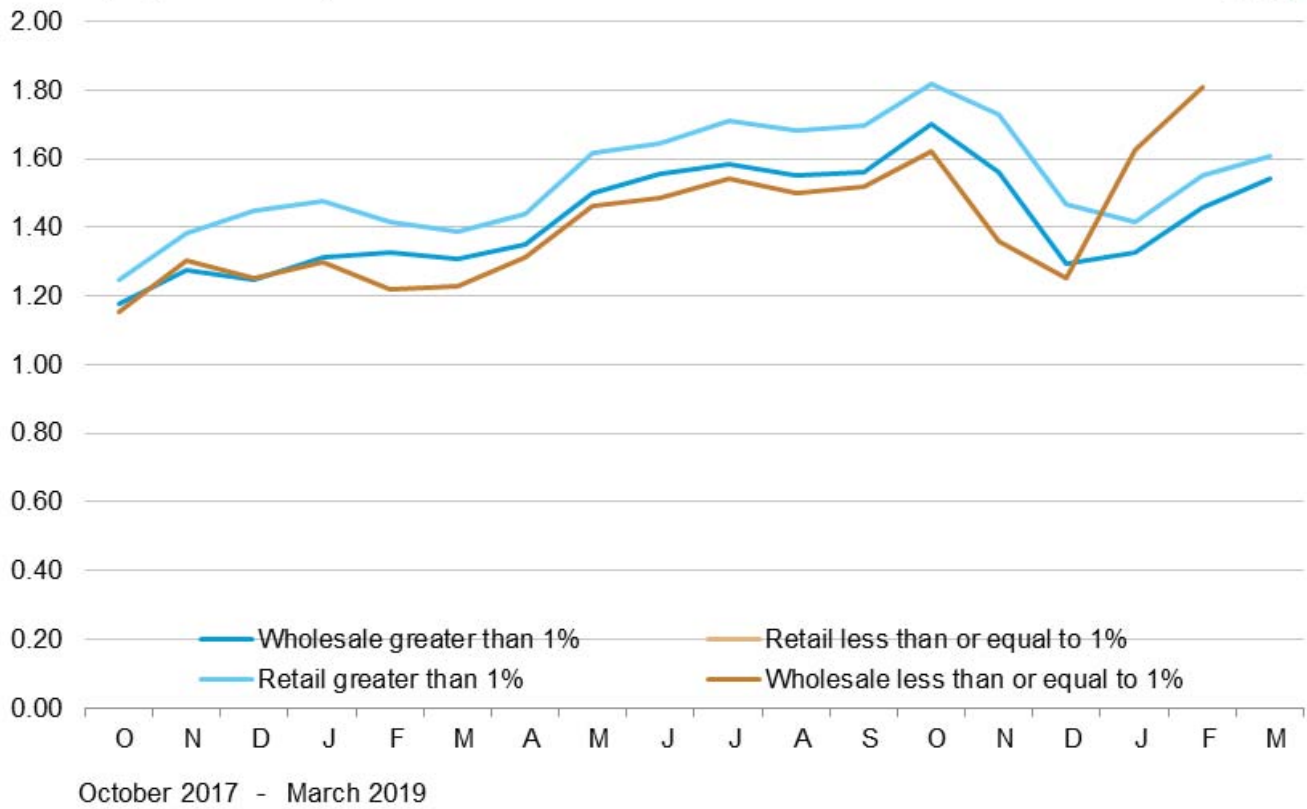
Notes: - Values shown for the current month are preliminary. Values shown for previous months are revised. Data through 2018 are final. Totals may not equal the sum of the components due to rounding.

Sources: U.S. Energy Information Administration Form EIA-782A, "Refiners'/Gas Plant Operators' Monthly Petroleum Product Sales Report."

Figure 7. U.S. Refiner residual fuel oil prices



dollars per gallon excluding taxes



Source: U.S. Energy Information Administration, Form EIA-782A, "Refiners'/Gas Plant Operators' Monthly Petroleum Product Sales Report."