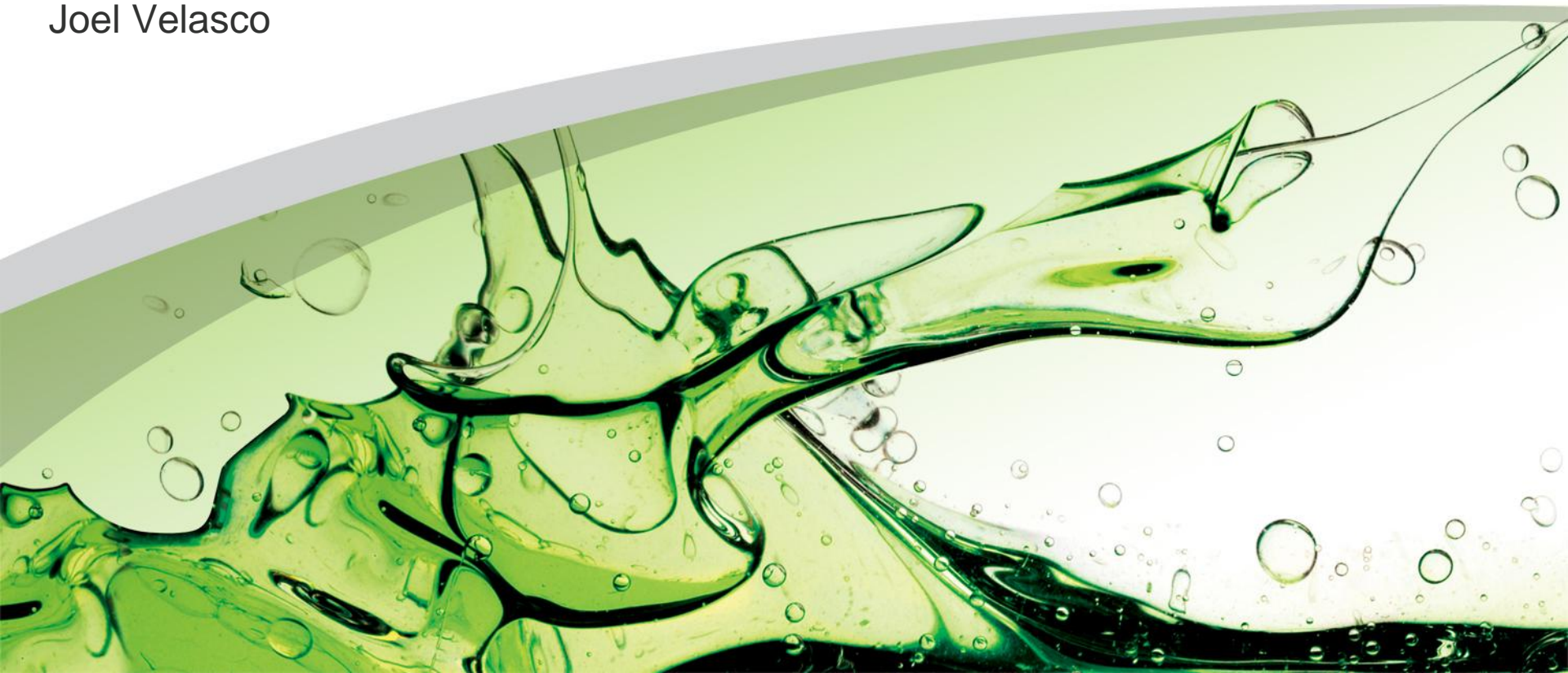




Brazilian Sugarcane

February 2013

Joel Velasco



Safe Harbor Summary

This presentation and oral statements accompanying this presentation contain forward-looking statements, and any statements other than statements of historical facts could be deemed to be forward-looking statements. These forward-looking statements include, among other things, statements regarding future events (such as Amyris's financial outlook, anticipated products, production roadmap and construction of production facilities, short-term and long-term product sales expectations, commercialization expectations, production volumes and costs for various potential products and associated product launch expectations, and expectations for R&D and commercial relationships) that involve risks and uncertainties. These statements are based on management's estimates and current expectations and actual results and future events may differ materially due to changes in Amyris's business and various risks and uncertainties, including those associated with any delays or failures in development, production and commercialization of products, liquidity and ability to fund capital expenditures, Amyris's reliance on third parties to achieve its goals, and other risks detailed in the "Risk Factors" section of Amyris's quarterly report on Form 10-Q filed on November 9, 2012. Amyris disclaims any obligation to update information contained in these forward-looking statements whether as a result of new information, future events, or otherwise.

High-Value Products from Sugarcane



**INDUSTRIAL SYNTHETIC
BIOLOGY PLATFORM**



PLANT SUGARS



**CHEMICALS &
FUELS**

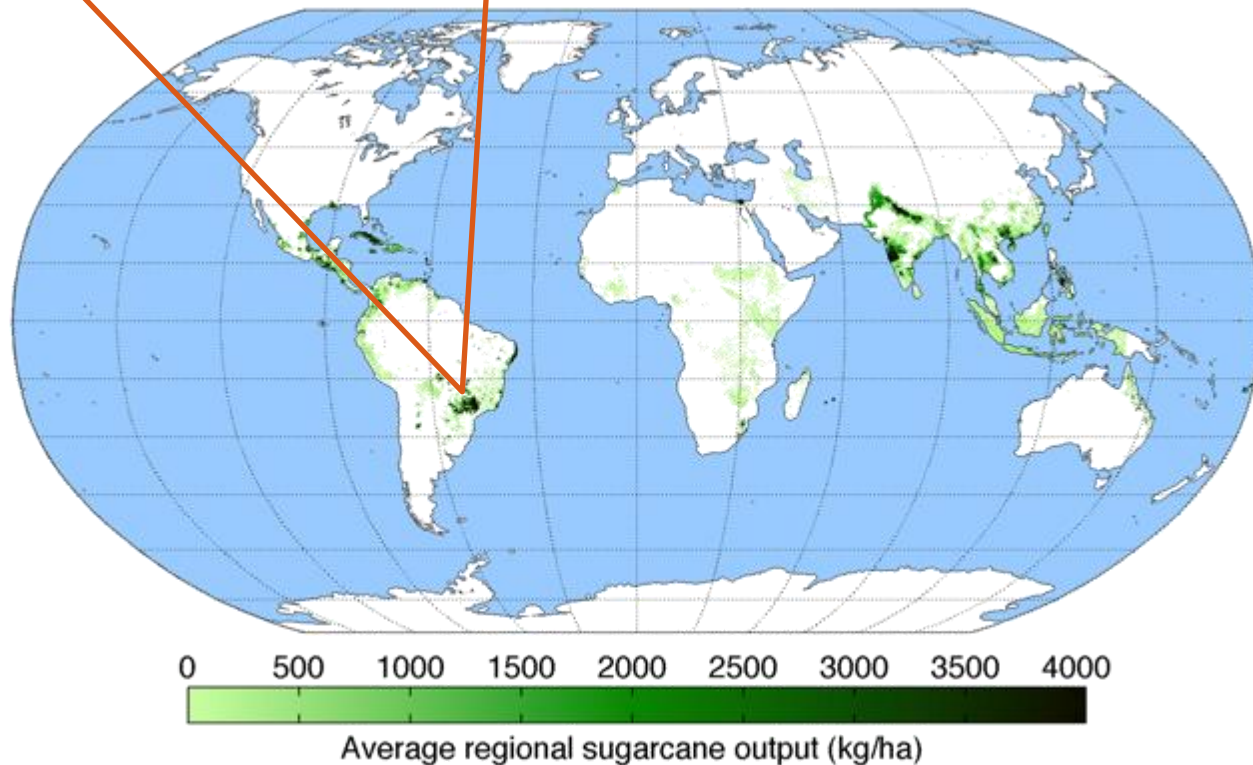


www.amyris.com

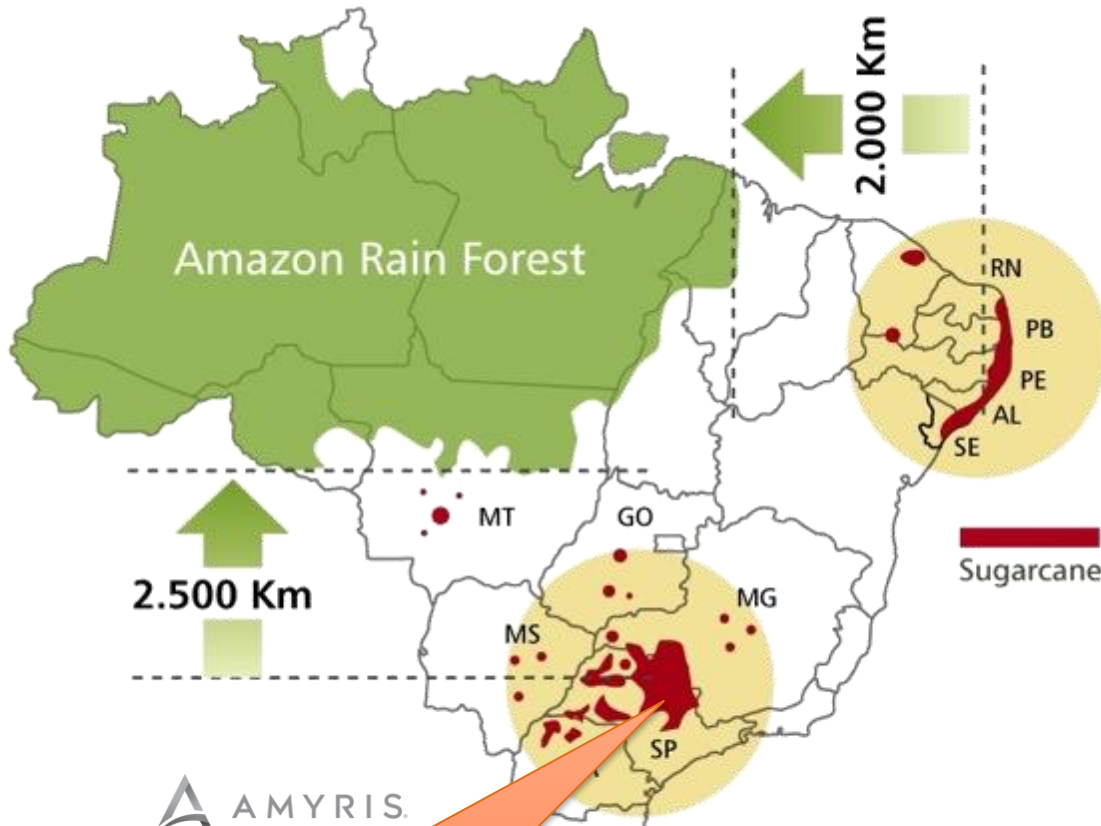


Brazil is #1 in Sugarcane

- ✓ Brazil is the **world's largest cane producer**, twice #2 India
- ✓ Brazil's **South-Central region** accounts for **90%** of country's cane harvest
- ✓ Brazil's sugarcane sugar **yields have grown at 3% CAGR** since late 1970s



Sugarcane Industry in Context



Sugarcane occupies 2.5% of Brazil's arable land to produce over 600 million tons per crop year

Millions of Hectares (2012)	
Brazil Land	850
Arable Land	330
Crop Land	70
Soybean	27
Corn	15
Sugarcane	8.5
Cattle Pasture	198

1 Hectare = 2.5 acres

Source: UNICA, CONAB, IBGE

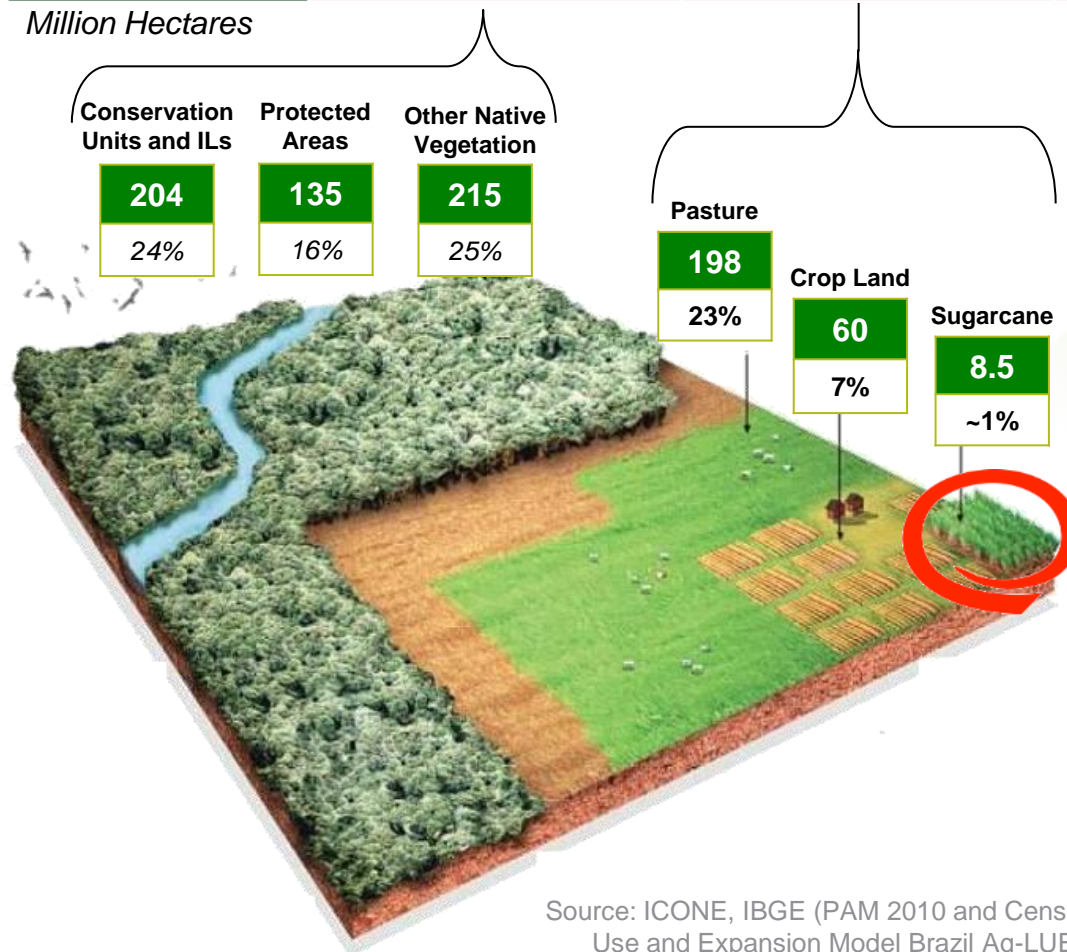
AMYRIS



Land Uses in Brazil

Total Area	Native Vegetation	Land in Use	Other Uses
850	554	258	38
100%	65%	30%	5%

Million Hectares



Source: ICONE, IBGE (PAM 2010 and Censo Agropecuário), MMA, INPE (TerraClass), Agricultural Land Use and Expansion Model Brazil Ag-LUE-BR (Gerd Sparovek, ESALQ/USP). Developed by: UNICA and Cosan. Note: ILs = Indigenous Lands. Other Native Vegetation include Legal Reserves (RLs)

Brazilian Industry Output



SUGARCANE

+500 Million Tons

$\frac{2}{5}$ of World Crop



RAW SUGAR

37 Million Tons

$\frac{1}{4}$ of World Demand



ETHANOL

6 Billion Gallons

$\frac{1}{2}$ of U.S. Production

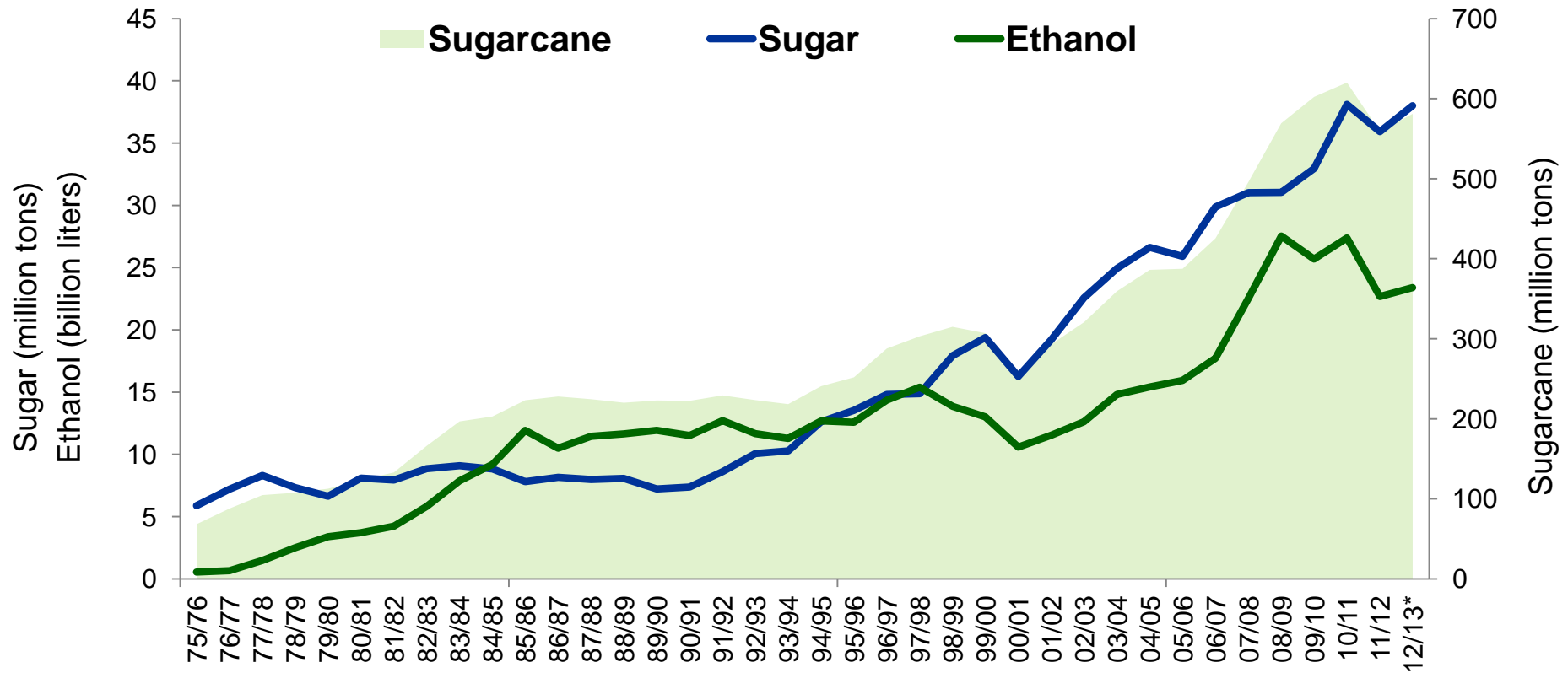


ELECTRICITY

1,500 MW

~3% of Brazil Demand

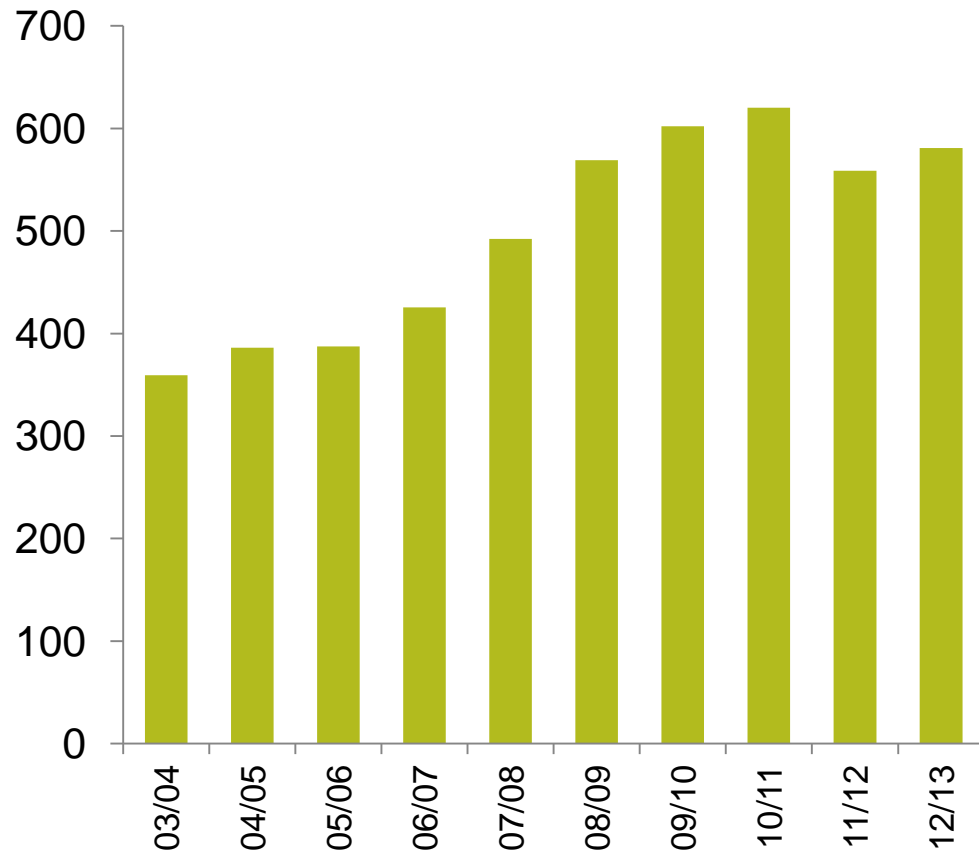
Historical Production



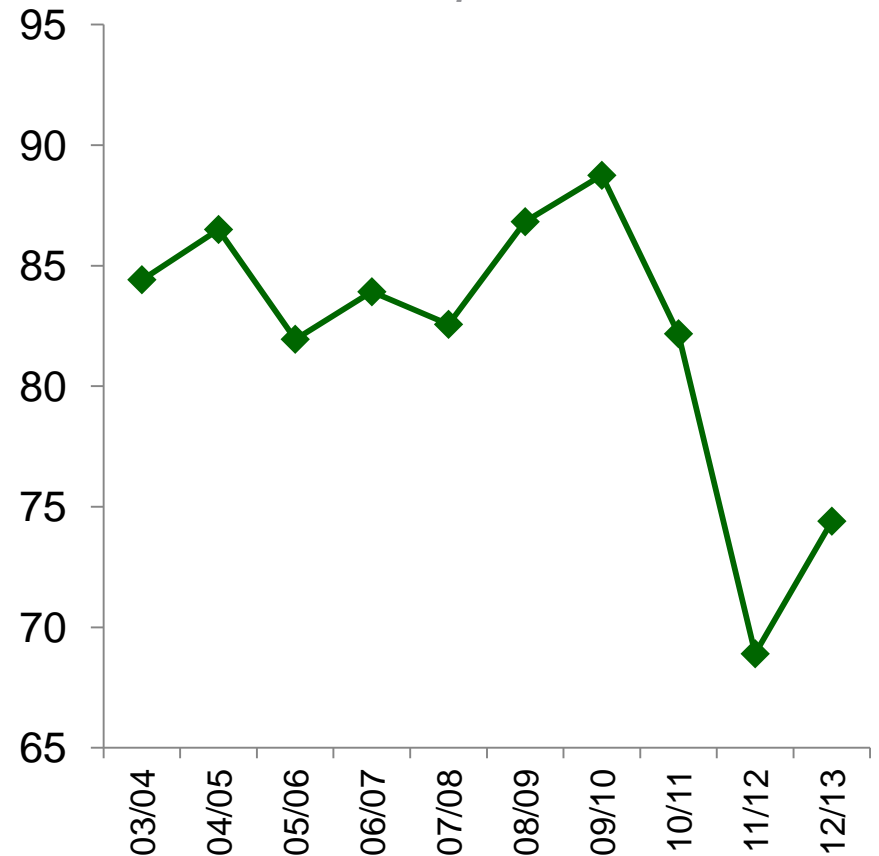
Source: UNICA and MAPA. Note: 12/13 data is estimate.

Agricultural Challenge

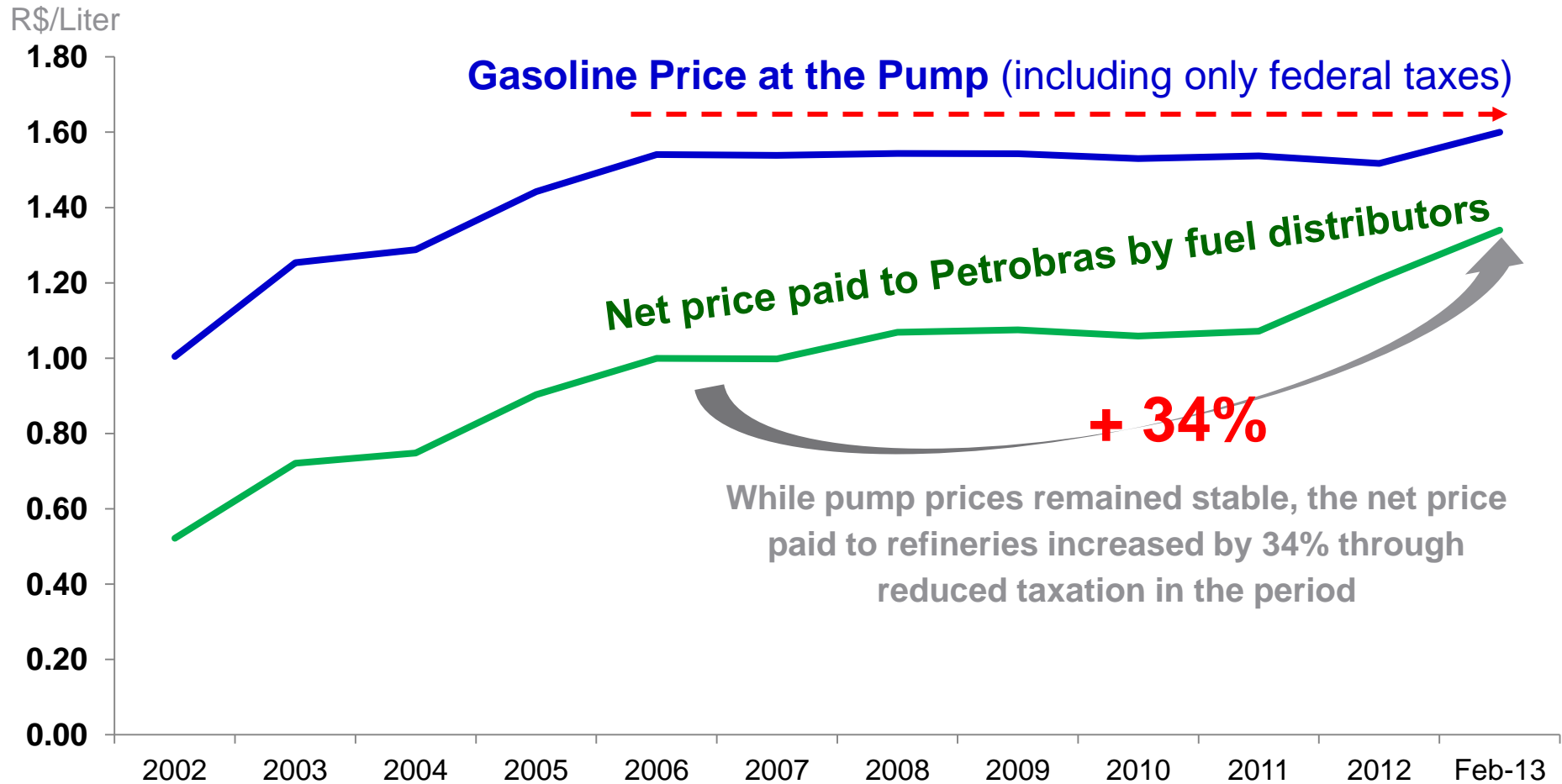
CROP SIZE
Metric Tons



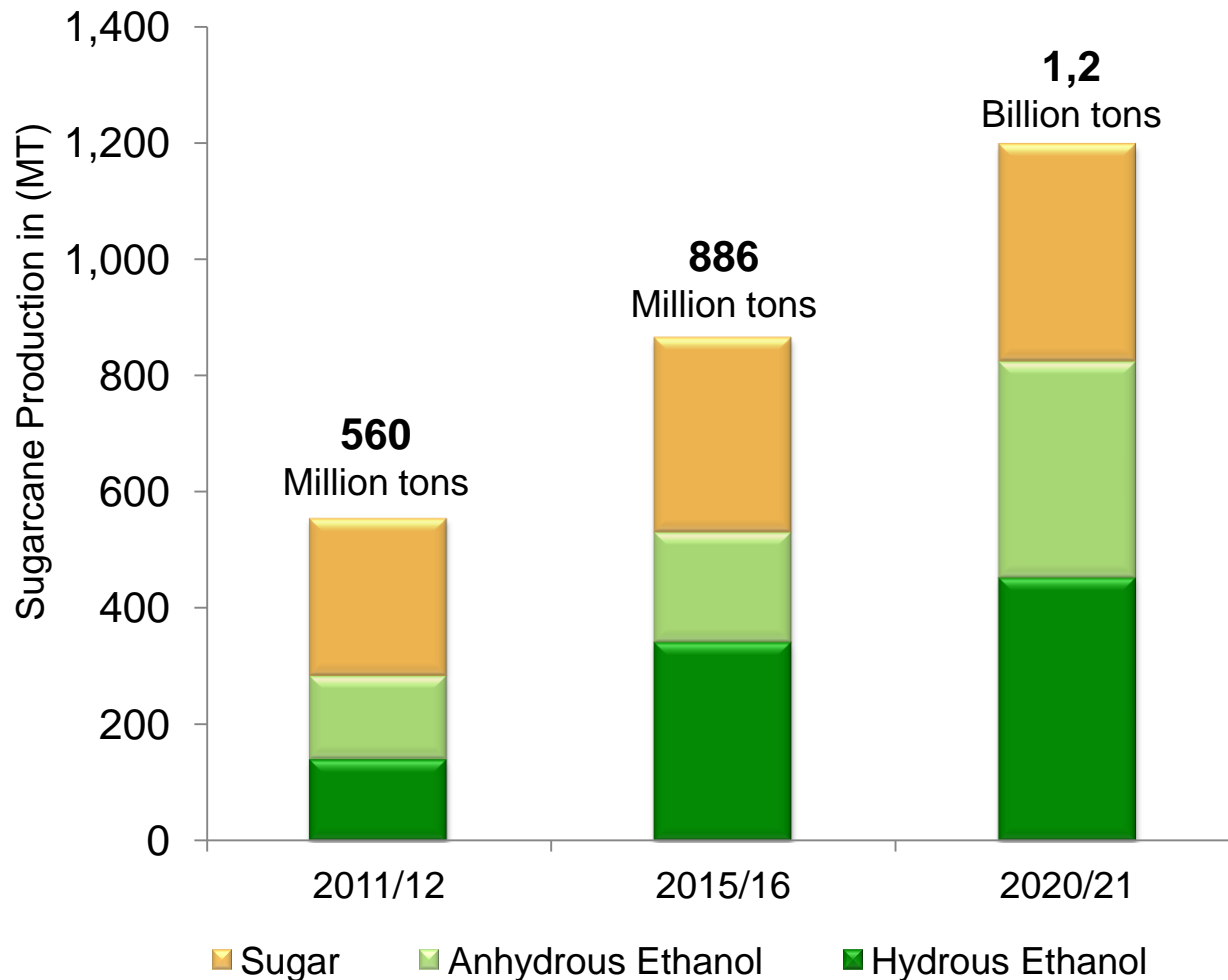
PRODUCTIVITY
Tons per Hectare



Market Challenge



UNICA Vision: Growth Needed



2020 SCENARIO

SUGAR: To meet domestic demand and retain current share (50%) of global sugar market, annual sugar production will have to increase by 13.7 million tons by 2020.

ETHANOL: Projected production to meet 50% (vs 36% currently) of estimated ethanol market in Brazil plus about export demand of about 13 billion liters (4 BGY).

OTHERS: Other uses of sugarcane could account for upwards of 5 billion liters ethanol-equivalent.