

Table 1. Crude oil prices

dollars per barrel

Year month	Domestic first purchase prices	Average F.O.B.[a] cost of crude oil imports[b]	Average landed cost of crude oil imports[b]	Refiner acquisition cost of crude oil		
				Domestic	Imported	Composite
1997 average	17.23	16.94	18.11	19.61	18.53	19.04
1998 average	10.87	10.76	11.84	13.18	12.04	12.52
1999 average	15.56	16.47	17.23	17.90	17.26	17.51
2000 average	26.72	26.27	27.53	29.11	27.70	28.26
2001 average	21.84	20.46	21.82	24.33	22.00	22.95
2002 average	22.51	22.63	23.91	24.65	23.71	24.10
2003 average	27.56	25.86	27.69	29.82	27.71	28.53
2004 average	36.77	33.75	36.07	38.97	35.90	36.98
2005 average	50.28	47.60	49.29	52.94	48.86	50.24
2006 average	59.69	57.03	59.11	62.62	59.02	60.24
2007 average	66.52	66.36	67.97	69.65	67.04	67.94
2008 average	94.04	90.32	93.33	98.47	92.77	94.74
2009 average	56.35	57.78	60.23	59.49	59.17	59.29
2010 average	74.71	74.19	76.50	78.01	75.86	76.69
2011 average	95.73	101.66	102.92	100.71	102.63	101.87
2012 average	94.52	99.78	101.00	100.72	101.09	100.93
2013 average	95.99	96.56	96.99	102.91	98.11	100.49
2014 average	87.39	85.65	88.16	94.05	89.56	92.02
2015 average	44.39	41.91	45.38	49.94	46.38	48.39
2016 average	38.29	36.37	38.56	42.41	38.75	40.66
2017 average	48.05	45.58	48.50	52.05	49.12	50.68
2018 average	61.40	56.31	58.89	67.05	60.95	64.38
2019 average	55.59	54.27	56.60	60.31	57.94	59.38
2020 average	36.86	33.66	36.42	41.23	37.41	39.75
2021 average	65.84	62.04	65.05	69.07	65.85	67.83
2022						
January	80.33	72.91	76.36	82.52	76.92	80.26
February	89.41	86.22	87.71	91.85	87.73	90.21
March	107.07	99.71	101.61	108.62	104.39	106.98
April	103.34	98.86	101.52	106.74	102.70	105.22
May	108.29	103.80	105.62	111.45	108.71	110.43
June	113.77	106.95	109.42	115.90	112.06	114.44
July	100.84	92.18	96.10	104.82	99.67	102.82
August	93.76	83.06	88.55	98.11	92.21	95.80
September	84.62	76.17	82.01	88.51	83.30	86.57
October	86.61	75.10	78.87	90.25	84.26	88.02
November	84.43	68.85	75.02	87.92	79.31	84.57
December	76.45	64.87	69.23	80.20	70.89	76.56
2022 average	93.97	85.98	89.62	97.45	91.83	95.29
2023						
January	75.71	62.81	67.22	79.18	70.23	75.63
February	74.32	60.58	65.40	78.33	69.52	74.80
March	72.09	62.79	66.32	75.82	68.45	72.96
April	77.22	68.95	71.15	80.51	74.83	78.38
May	70.14	63.60	68.56	74.18	69.51	72.35
June	68.58	63.69	69.14	72.52	69.63	71.43
July	74.05	69.71	73.52	77.41	74.83	76.41
August	79.78	75.82	78.56	82.22	81.02	81.76
September	87.96	79.77	83.10	90.76	87.17	89.33
October	84.65	76.04	79.90	88.68	83.30	86.63
November	77.45	69.33	73.38	82.10	76.39	79.69
December	71.00	R60.13	R65.95	75.31	68.09	72.34
2023 average	76.10	R67.65	R71.74	79.70	74.43	77.63
2024						
January	72.26	R62.21	R65.25	R75.89	R69.37	R73.28
February	74.83	66.42	70.14	R78.19	R73.06	R76.23
March[c]	NA	NA	NA	E82.03	E76.74	E80.03

NA = Not available.

E = Estimated data.

R = Revised data.

[a] Free on Board. See Glossary.

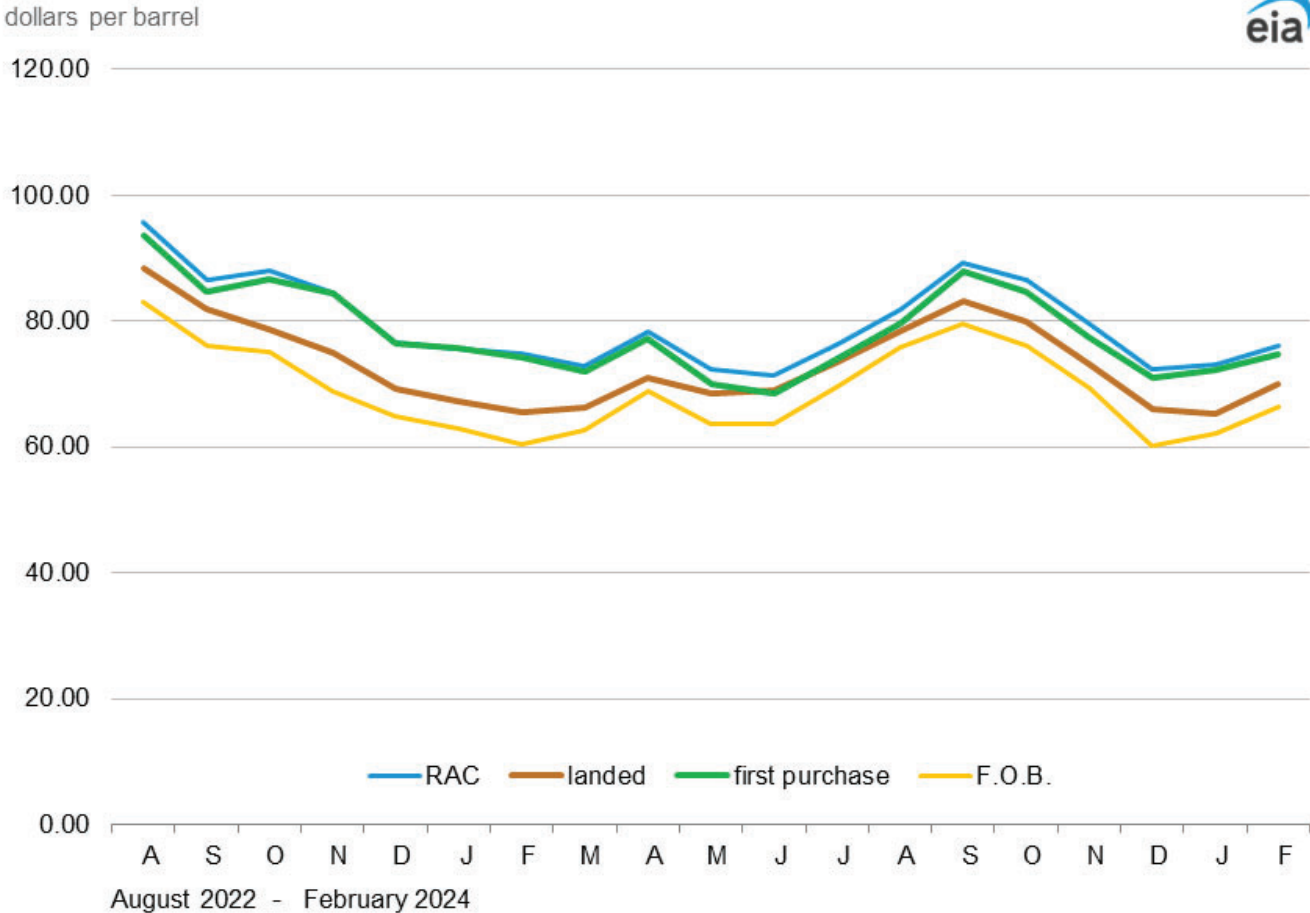
[b] Values reflect the month of acquisition, which can be the month of loading, the month of landing, or sometime between those events. Prices for crude oil can be determined at a time other than the acquisition date. See the Explanatory Notes section.

[c] Data are initial estimates calculated using regression models based on past and present values, spot prices, and other internally computed data. For an explanation of estimation methodology, see the Preface.

Notes: - In November 2018, a new crude stream was added and a selected crude stream was deleted for North Dakota. In January 2004, new crude streams were added and selected crude streams were discontinued for California, Gulf Coast, Oklahoma, and Texas. - Values for Domestic First Purchase Price and Refiner Acquisition Cost for the current two months, and for average F.O.B. and average landed costs, for the current three months are preliminary. Values shown for previous months may be revised. Data through 2022 are final.

Data source: Domestic first purchase prices -- See source from Table 18. Crude oil imports costs -- See Sources from Table 21. Refiner acquisition costs -- U.S. Energy Information Administration, Form EIA-14, Refiners' Monthly Cost Report.

Figure 1. Crude oil prices



Data source: U.S. Energy Information Administration, Form EIA-182, *Domestic Crude Oil First Purchase Report*; Form EIA-856, *Monthly Foreign Crude Oil Acquisition Report*; and Form EIA-14, *Refiners' Monthly Cost Report*. Note: RAC stands for refiner acquisition cost.