

State Heating Oil and Propane Program Updates



For

2018 SHOPP Workshop

June 6, 2018 / Washington, DC

By

Marcela Rourk

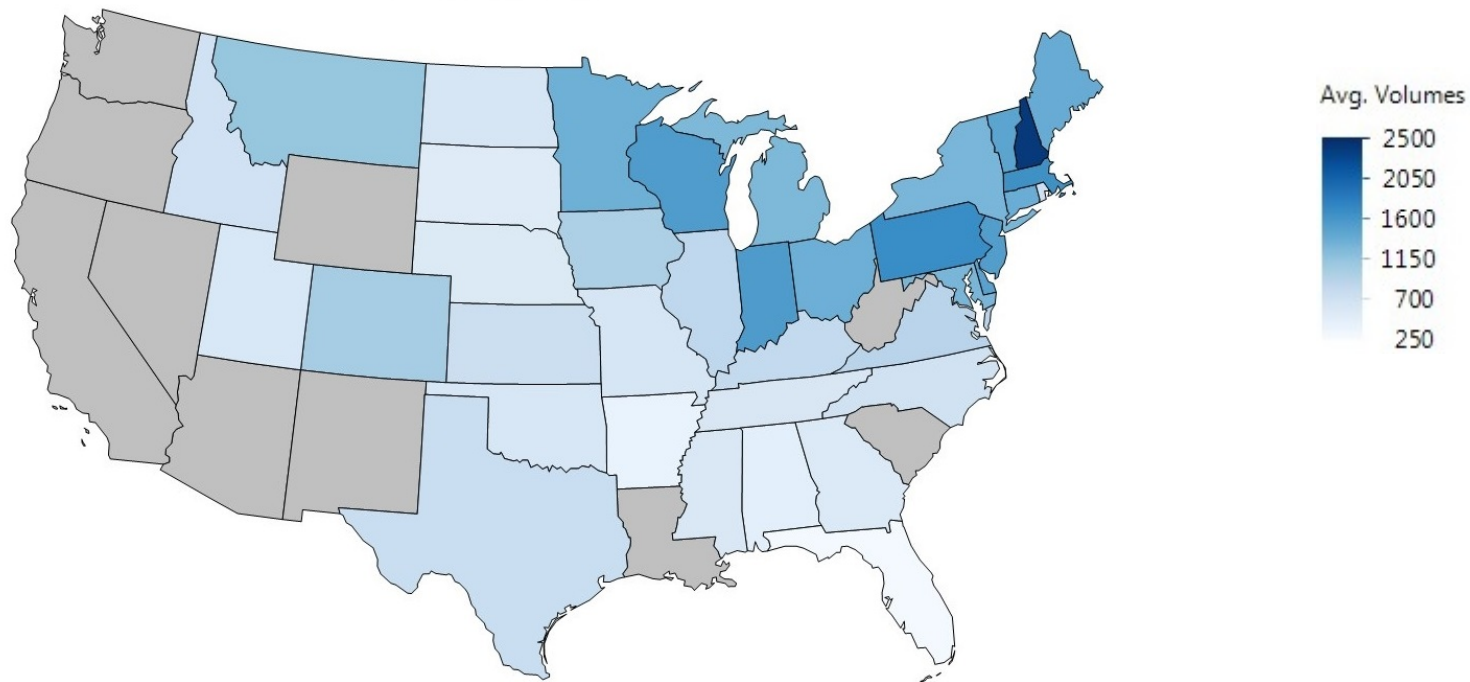
Overview

- SHOPP survey highlights
- EIA Initiatives
- Ideas for future improvement of survey
- Concluding remarks

SHOPP Survey Highlights

- Propane volume collection
 - EIA collected annual residential propane sales volumes from SHOPP respondents last year
 - we had a high response rate for this effort
 - results are being used to inform sampling methodology in the future and analyzed to see if they can improve our current price estimates
- Frame project
 - EIA is reinstating the EIA-863 “Petroleum Product Sales Identification” survey
 - building a frame at the corporate level for petroleum marketing surveys, including the SHOPP survey
 - we need assistance from states to share company lists where they are available

2016 Average Residential Propane Sales (thousands of gallons) for Sampled SHOPP Propane Dealers



Source: EIA, EIA-877, "Winter Heating Fuels Telephone Survey"

State Responsibility for SHOPP Data

- Protecting respondent-level data
 - SHOPP participants may use the data to analyze market conditions in their state, but respondent-level data may not be shared with other state offices without first submitting a request to the EIA Confidentiality Officer
 - please be mindful of any activities that may inadvertently disclose respondent-level data
- Data consistency
 - before the start of the season or any time a new data collection person joins the staff, please take time to review the data collection training available on the website
 - make use of the notes in the Internet Data Collection (IDC) system to note exactly which price you are getting so you can ensure you ask for that price each week

National Oil and Gas Gateway



NATIONAL OIL
& GAS GATEWAY

Explore & Filter the Data

Featured Reports & Charts

About

Feedback

< Close Filters

Show Advanced Filters >>

States: Alabama * Mississippi *

clear all (x)

+ see more

Standard Filters

State Alabama (18,885), Mississippi (34,592)

County County

Operator Operator

Completed Formation Completed Formation

No result found

Field/Unit Field/Unit

Explore & Filter the Data

Map

Data Sheet

Dashboard

Map + Data Sheet

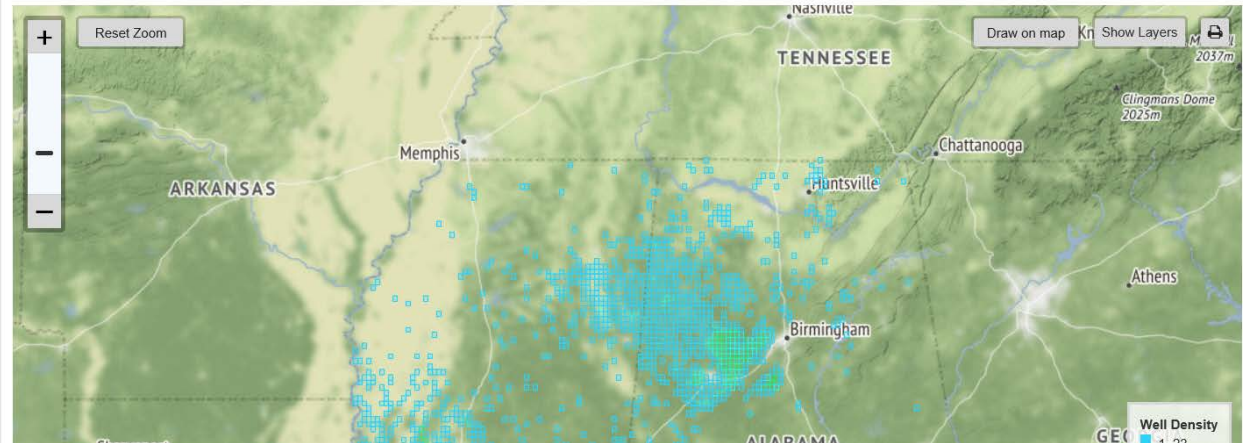
?

Export Data

Total Wells: 53,477

Well counts shown for a state include all wells, including inactive and abandoned wells, in a state's submitted data. Only wells with valid GIS coordinates within a state's boundaries are shown on the map. The data sheet view will include all wells submitted by a state.

Database last updated: March 2018



Sources: EIA, Thomson Reuters, [National Oil and Gas Gateway](#)

National Oil and Gas Gateway

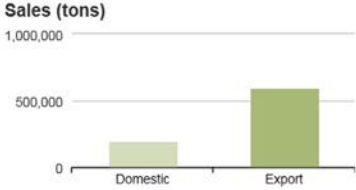
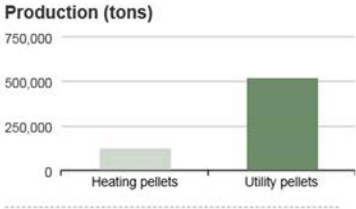
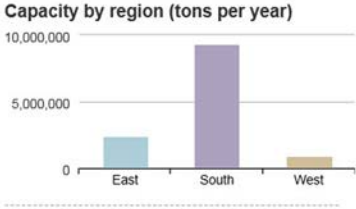
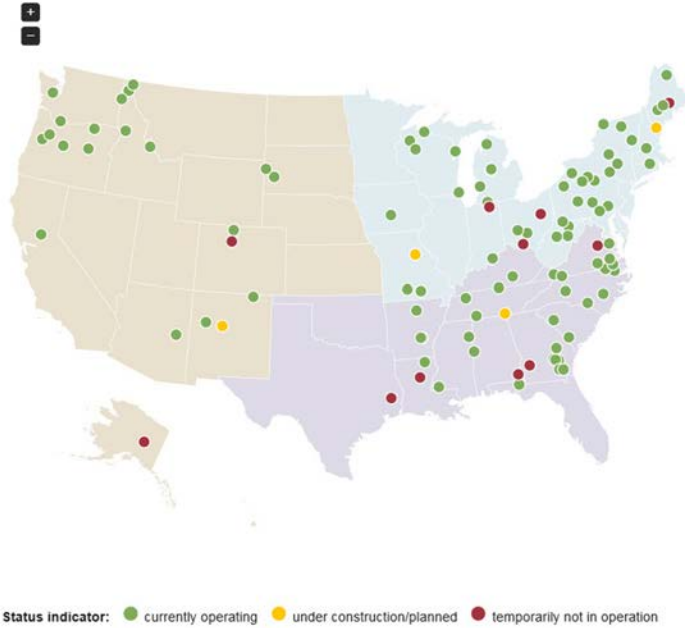
- Collaborative effort between the Groundwater Protection Council, its member states, EIA, and the U.S. DOE's Office of Fossil Energy to provide well-level data to the public for the first time
- State participation is voluntary, and data are provided by states
- Data are available on well production, disposition, and water injection, in downloadable as well as interactive format (map and data tables)
- Currently data are provided by nine oil and gas producing states
- For more information, contact Josh Latimore, Joshuah.Latimore@eia.gov

Monthly Densified Biomass Fuel Report

- Now have a full year of data available
- Published data from this survey includes:
 - number of densified biomass manufacturing facilities
 - manufacturing feedstocks and average costs of feedstock
 - densified biomass production numbers by type
 - heat, ash, and moisture content of densified biomass products
 - densified biomass product inventories
 - densified biomass product sales and average cost per ton for domestic sales and exports
- For more information, contact Carolyn Moses, Carolyn.Moses@eia.gov, or Connor Murphy, Connor.Murphy@eia.gov

Monthly Densified Biomass Fuel Report

Manufacturing facilities with capacity and status, December 2017



Sources: EIA, [Monthly Densified Biomass Fuel Report](#)

HGL by Rail data

- First published in February 2017
- This data series, integrated into our [Petroleum Supply Monthly](#) publication, shows movement of hydrogas carbon liquids by rail between PADDs, and covers propane, propylene, normal butane, and isobutane
- Data are available from 2010 to present
- For more information, contact Warren Wilczewski, Warren.Wilczewski@eia.gov

EIA is enhancing the State Energy Portal to meet customer's needs

EIA is enhancing our state data interface.

Tell us what you want to see.

- Regional data
- Timely data
- Ability to customize
- Visualizations
- New ways to find information
- Options to export

Email us at state@eia.gov

Rankings: Total Energy Consumed per Capita, 2015
(million Btu)



QUICK FACTS

- In 2016, Texas was the leading oil-producing state, producing more than one-third of the nation's supply.
- As of January 2017, the 29 petroleum refineries in Texas were able to process more than 5.8 million barrels of crude oil per day and accounted for 30% of total U.S. refining capacity.
- Texas accounted for more than 25% of U.S. marketed natural gas production in 2016, making it the leading natural gas producer among the states.
- Texas leads the nation in wind power generation capacity with more than 27,450 megawatts. Since 2014, Texas wind turbines have produced more electricity than both of the state's two nuclear power plants.
- Texas is the nation's largest producer of hydro coal. About 42% of the coal-fired power plants in Texas burn hydro for electricity generation.

Last updated: October 16, 2016

EIA is enhancing the State Energy Portal to meet customer's needs (cont.)

- Project started in February 2018
- Goal: to enhance the state data user experience on the EIA website
- Expected outcomes:
 - more comprehensive and timely view of state energy data
 - ability for users to access, visualize, map, and export state data more efficiently
- State energy office input is key to informing the enhancements
 - held focus group on March 1
 - states will be invited to provide feedback on the State Energy Portal's prototype this summer
 - soliciting ongoing input on features, functionality, and data needs

Ideas for Survey Improvement

- Develop new data collection methodology to accommodate for increasingly complex pricing structures used in particular by publicly-traded companies
- Select a new heating oil and propane sample
- Collect data once per month during the summer (6 times)

For more information

U.S. Energy Information Administration home page | www.eia.gov

Annual Energy Outlook | www.eia.gov/aeo

Short-Term Energy Outlook | www.eia.gov/steo

International Energy Outlook | www.eia.gov/ieo

Monthly Energy Review | www.eia.gov/mer

Today in Energy | www.eia.gov/todayinenergy

State Energy Profiles | www.eia.gov/state

Drilling Productivity Report | www.eia.gov/petroleum/drilling/

Petroleum Supply Monthly | <https://www.eia.gov/petroleum/supply/monthly/>