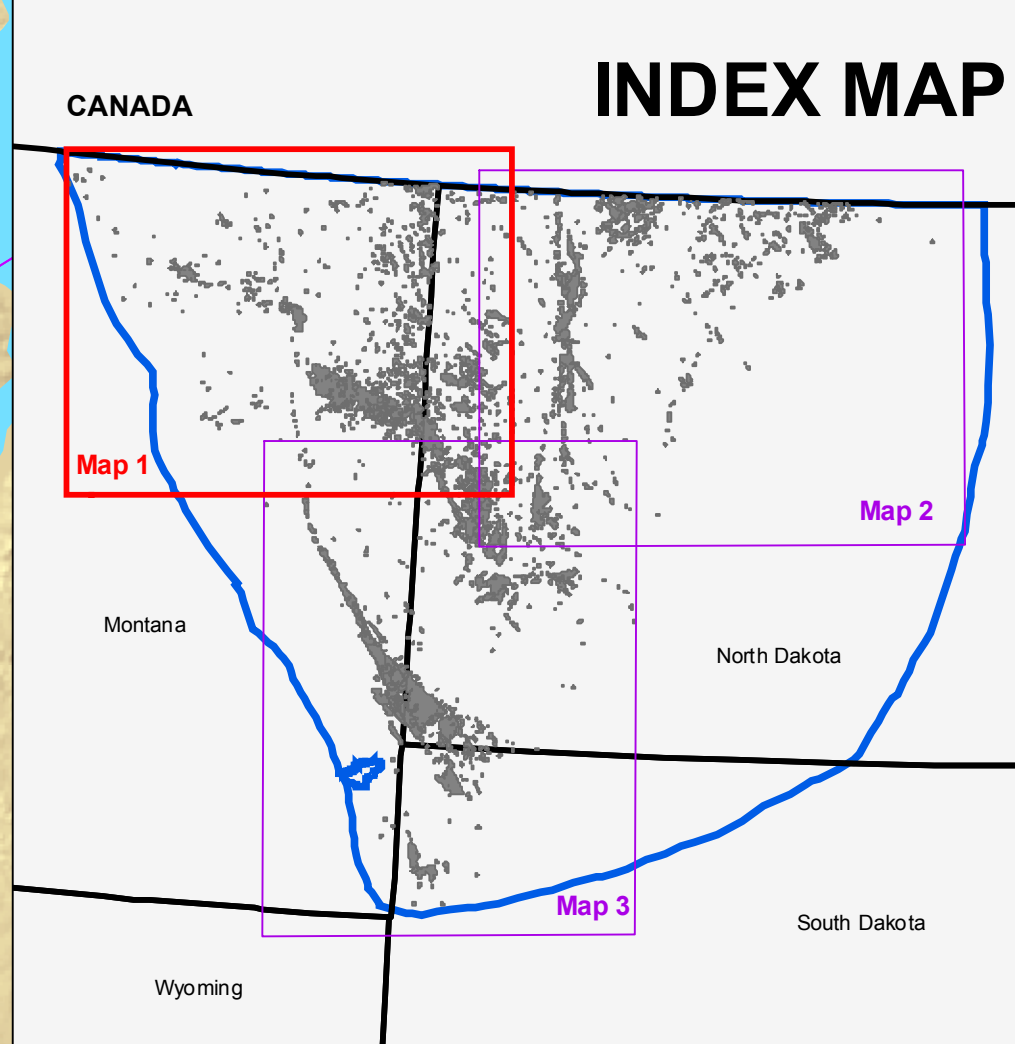
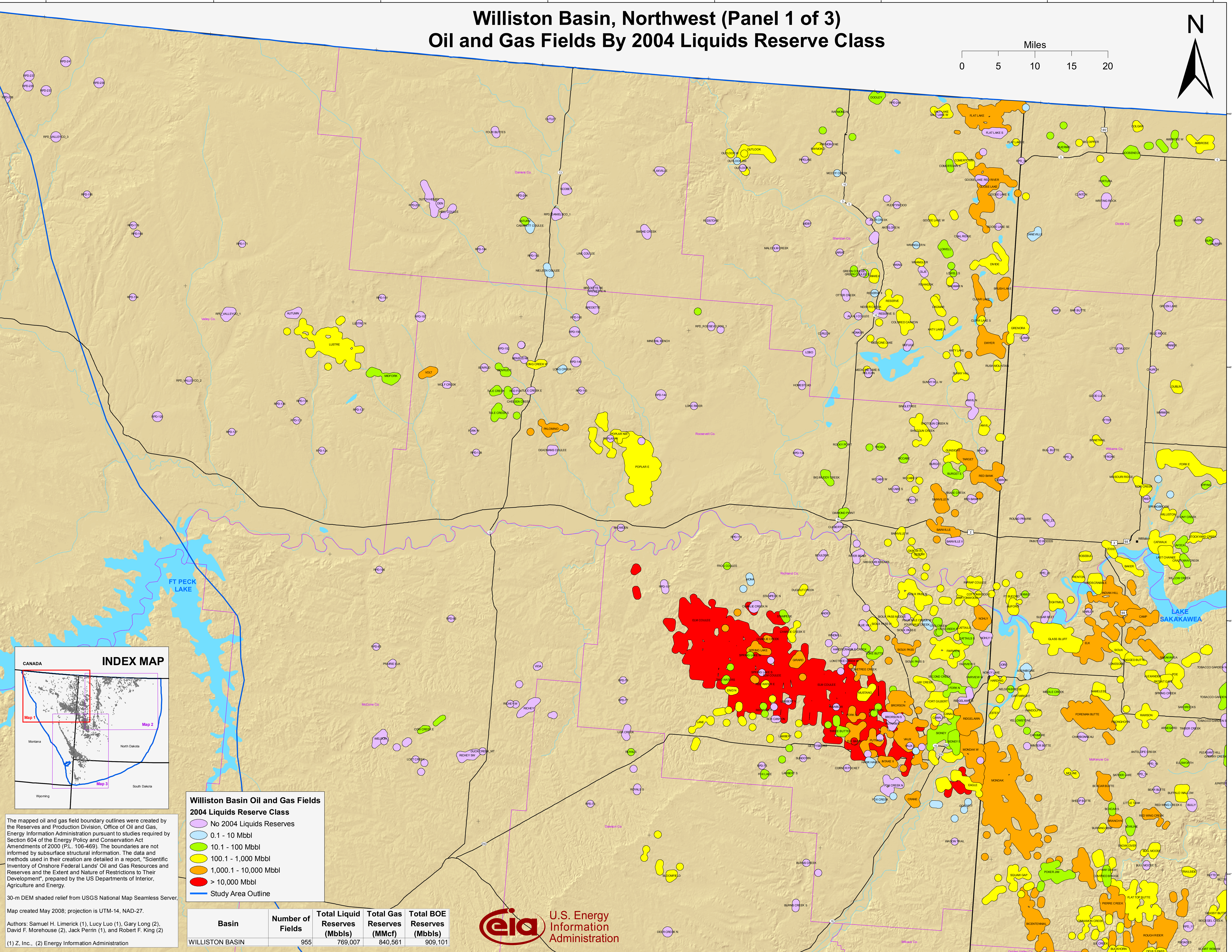
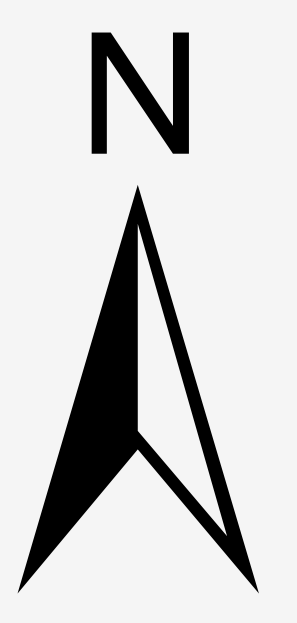
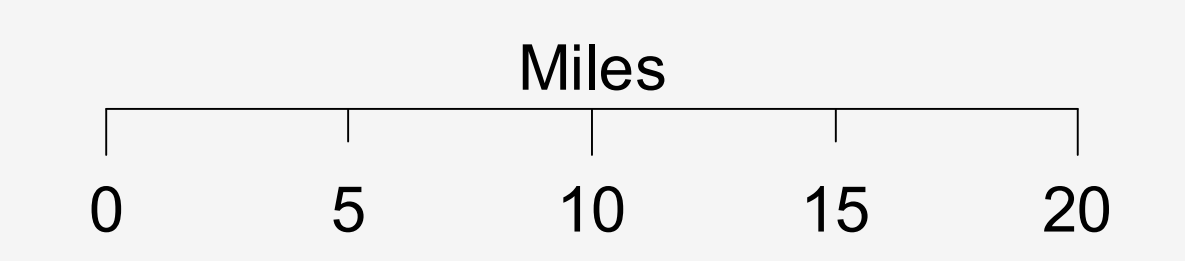


Williston Basin, Northwest (Panel 1 of 3) Oil and Gas Fields By 2004 Liquids Reserve Class



The mapped oil and gas field boundary outlines were created by the Reserves and Production Division, Office of Oil and Gas, Energy Information Administration pursuant to studies required by Section 604 of the Energy Policy and Conservation Act Amendments of 2000 (P.L. 106-469). The boundaries are not informed by subsurface structural information. The data and methods used in their creation are detailed in a report, "Scientific Inventory of Onshore Federal Lands' Oil and Gas Resources and Reserves and the Extent and Nature of Restrictions to Their Development", prepared by the US Departments of Interior, Agriculture and Energy.

30-m DEM shaded relief from USGS National Map Seamless Server.

Map created May 2008; projection is UTM-14, NAD-27.

Authors: Samuel H. Limerick (1), Lucy Luo (1), Gary Long (2), David F. Morehouse (2), Jack Perrin (1), and Robert F. King (2)

(1) Z, Inc., (2) Energy Information Administration

**Williston Basin Oil and Gas Fields
2004 Liquids Reserve Class**

- No 2004 Liquids Reserves
- 0.1 - 10 Mbbl
- 10.1 - 100 Mbbl
- 100.1 - 1,000 Mbbl
- 1,000.1 - 10,000 Mbbl
- > 10,000 Mbbl
- Study Area Outline

Basin	Number of Fields	Total Liquid Reserves (Mbbls)	Total Gas Reserves (MMcf)	Total BOE Reserves (mbbls)
WILLISTON BASIN	955	769,007	840,561	909,101

