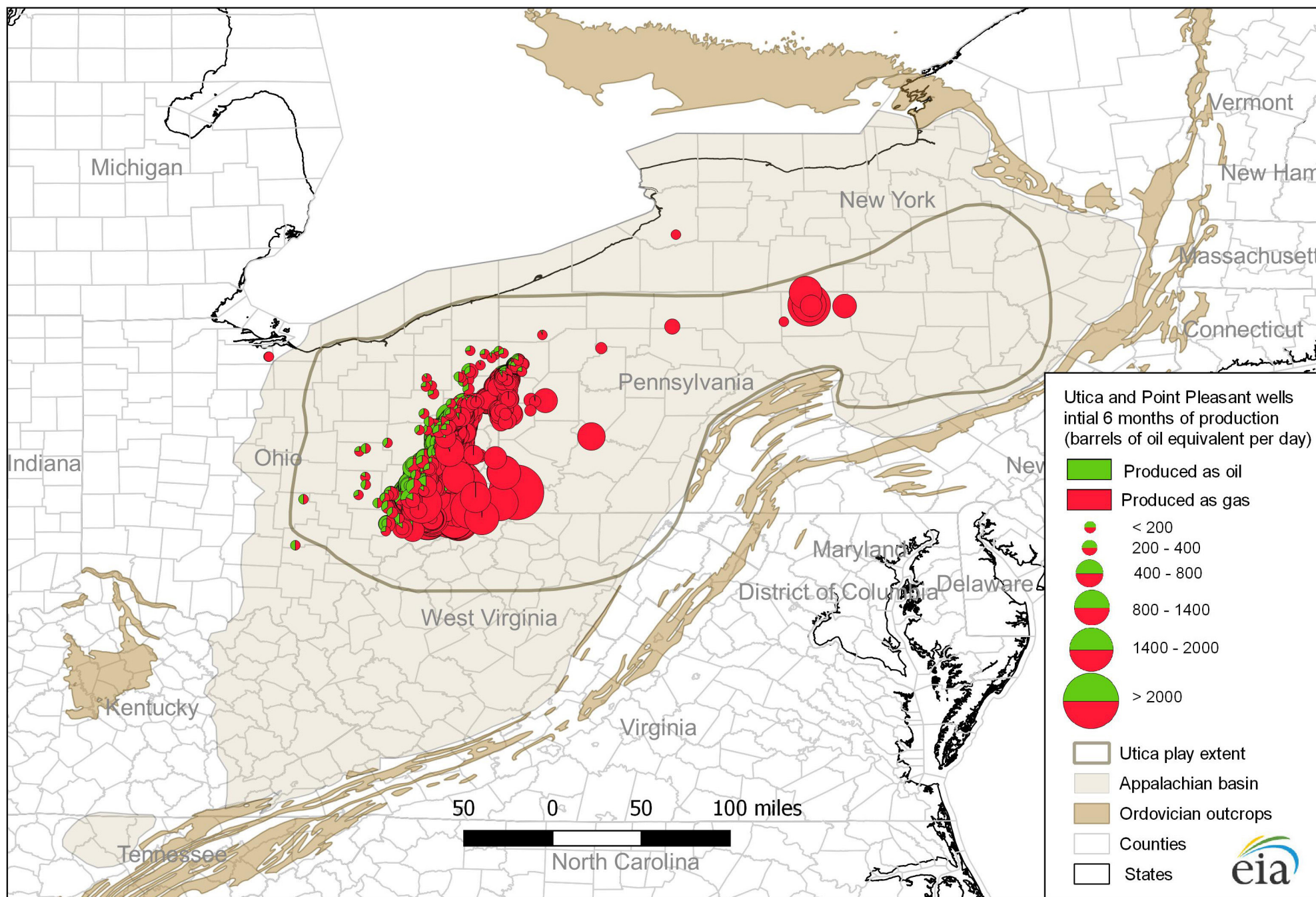


# Utica and Point Pleasant Production through June 2016



Source: U.S. Energy Information Administration based on DrillingInfo Inc., Appalachian Oil and Natural Gas Research Consortium, and U.S. Geological Survey.  
 Note: EIA calculates the daily production rate for each well using the initial six contiguous months of liquid and gas production expressed in barrels of oil equivalent per day.