

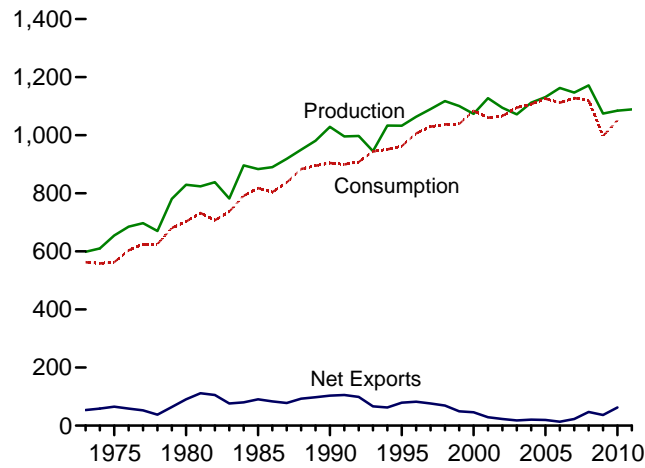
Coal



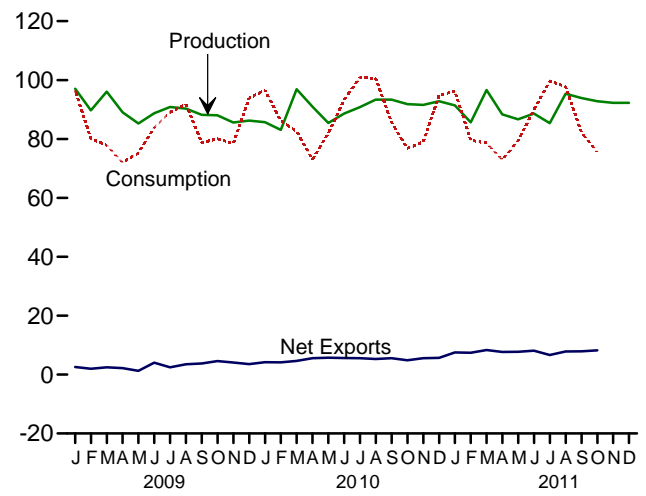
Coal yard, Curtis Bay, Maryland. Source: U.S. Department of Energy.

Figure 6.1 Coal
(Million Short Tons)

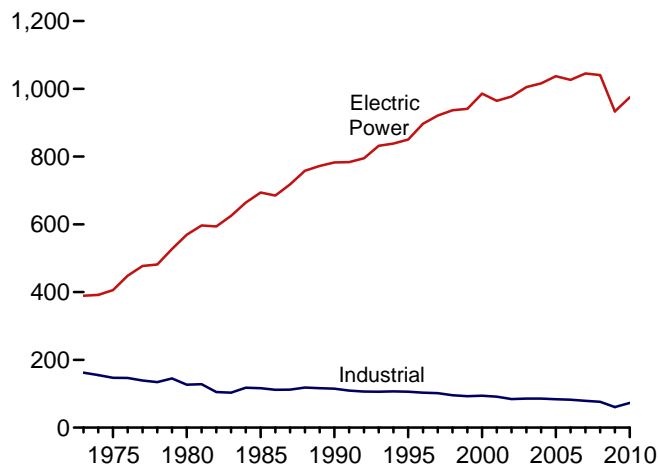
Overview, 1973-2011



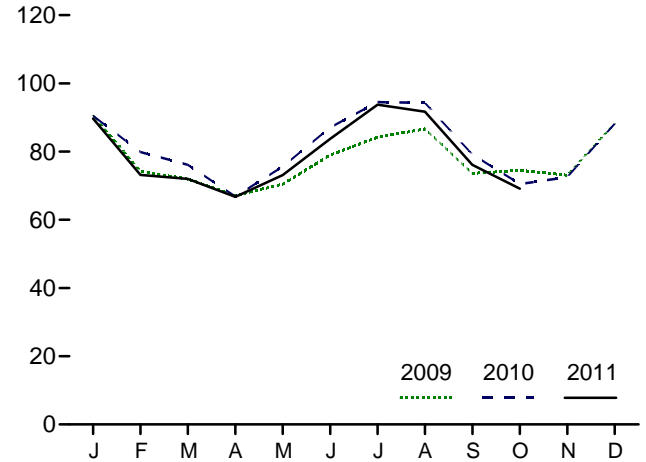
Overview, Monthly



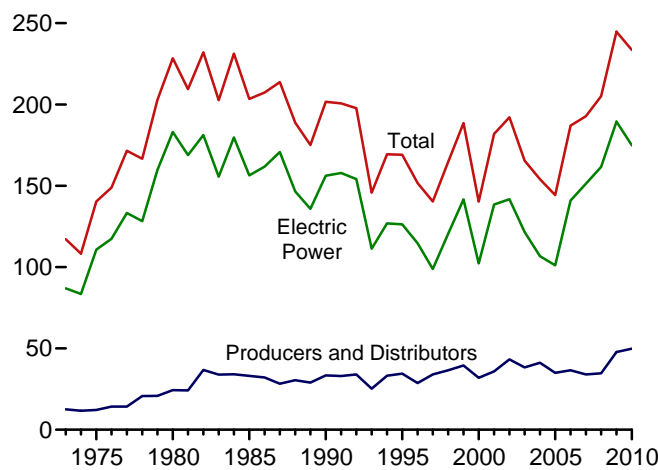
Consumption by Sector, 1973-2010



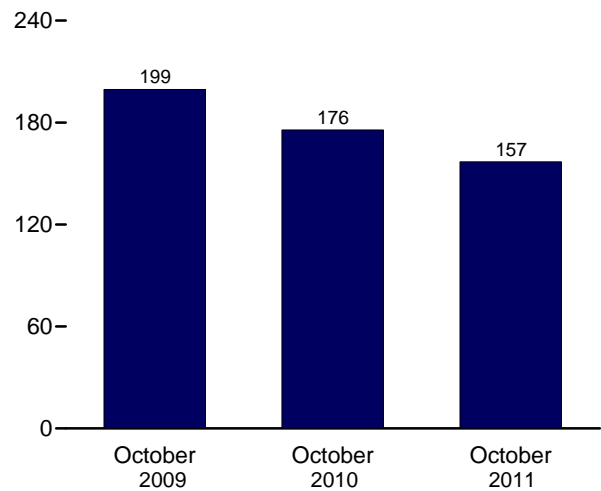
Electric Power Sector Consumption, Monthly



Stocks, End of Year, 1973-2010



Electric Power Sector Stocks, End of Month



Web Page: <http://www.eia.gov/totalenergy/data/monthly/#coal>.
Sources: Tables 6.1-6.3.

Table 6.1 Coal Overview
(Thousand Short Tons)

	Production ^a	Waste Coal Supplied ^b	Trade			Stock Change ^d	Losses and Unaccounted for ^e	Consumption
			Imports	Exports	Net Imports ^c			
1973 Total	598,568	NA	127	53,587	-53,460	(^f)	^f -17,476	562,584
1975 Total	654,641	NA	940	66,309	-65,369	32,154	-5,522	562,640
1980 Total	829,700	NA	1,194	91,742	-90,548	25,595	10,827	702,730
1985 Total	883,638	NA	1,952	92,680	-90,727	-27,934	2,796	818,049
1990 Total	1,029,076	3,339	2,699	105,804	-103,104	26,542	-1,730	904,498
1995 Total	1,032,974	8,561	9,473	88,547	-79,074	-275	632	962,104
1996 Total	1,063,856	8,778	8,115	90,473	-82,357	-17,456	1,411	1,006,321
1997 Total	1,089,932	8,096	7,487	83,545	-76,058	-11,253	3,678	1,029,544
1998 Total	1,117,535	8,690	8,724	78,048	-69,324	24,228	-4,430	1,037,103
1999 Total	1,100,431	8,683	9,089	58,476	-49,387	23,988	-2,906	1,038,647
2000 Total	1,073,612	9,089	12,513	58,489	-45,976	-48,309	938	1,084,095
2001 Total	1,127,689	10,085	19,787	48,666	-28,879	41,630	7,120	1,060,146
2002 Total	1,094,283	9,052	16,875	39,601	-22,726	10,215	4,040	1,066,355
2003 Total	1,071,753	10,016	25,044	43,014	-17,970	-26,659	-4,403	1,094,861
2004 Total	1,112,099	11,299	27,280	47,998	-20,718	-11,462	6,887	1,107,255
2005 Total	1,131,498	13,352	30,460	49,942	-19,482	-9,702	9,092	1,125,978
2006 Total	1,162,750	14,409	36,246	49,647	-13,401	42,642	8,824	1,112,292
2007 Total	1,146,635	14,076	36,347	59,163	-22,816	5,812	4,085	1,127,998
2008 Total	1,171,809	14,146	34,208	81,519	-47,311	12,354	5,740	1,120,548
2009								
January	97,022	1,272	2,329	4,907	-2,578	-2,104	1,370	96,449
February	89,688	928	1,855	3,822	-1,968	7,901	626	80,121
March	96,062	1,121	2,141	4,605	-2,464	12,517	4,389	77,814
April	89,072	1,036	1,303	3,513	-2,210	13,303	2,577	72,019
May	85,236	1,065	2,283	3,552	-1,269	7,537	2,231	75,264
June	88,708	1,118	1,840	5,886	-4,045	2,746	-792	83,827
July	90,847	1,248	2,018	4,477	-2,459	-781	1,282	89,134
August	90,308	1,206	1,568	5,056	-3,488	-4,988	1,282	91,731
September	88,185	1,113	1,854	5,625	-3,771	4,868	1,902	78,757
October	88,002	1,142	1,762	6,364	-4,603	4,561	-54	80,035
November	85,564	1,164	1,506	5,586	-4,080	2,724	1,423	78,502
December	86,229	1,252	2,179	5,703	-3,524	-8,617	-1,252	93,826
Total	1,074,923	13,666	22,639	59,097	-36,458	39,668	14,985	997,478
2010								
January	85,711	1,187	1,665	5,866	-4,202	-9,978	-3,933	96,607
February	83,087	908	1,239	5,386	-4,146	-6,588	323	86,115
March	96,904	1,192	1,899	6,554	-4,655	8,845	2,038	82,559
April	90,960	1,071	1,812	7,358	-5,545	11,519	1,858	73,108
May	85,401	1,138	1,475	7,220	-5,745	2,723	-3,819	81,890
June	88,621	1,219	1,771	7,387	-5,616	-9,407	331	93,301
July	90,795	1,273	1,390	6,928	-5,539	-15,570	1,262	100,837
August	93,350	1,261	1,702	7,001	-5,299	-8,837	-2,502	100,651
September	93,360	1,102	1,588	7,145	-5,556	5,040	-1,778	85,644
October	91,831	982	1,775	6,623	-4,849	11,425	-292	76,831
November	91,558	1,121	1,473	7,015	-5,542	8,840	-641	78,938
December	92,791	1,197	1,563	7,232	-5,669	-9,225	2,718	94,826
Total	1,084,368	13,651	19,353	81,716	-62,363	-11,215	-4,435	1,051,307
2011								
January	91,398	1,187	1,014	8,509	-7,496	-11,881	722	96,248
February	85,618	1,030	843	8,275	-7,432	-6,225	5,897	79,544
March	96,608	1,068	1,524	9,832	-8,308	3,605	7,155	78,607
April	88,335	910	1,136	8,843	-7,706	^R 8,695	-6	^R 72,849
May	86,652	852	1,313	9,042	-7,730	^R 1,995	-1,626	^R 79,405
June	88,647	1,109	970	9,102	-8,132	^R -10,104	1,757	^R 89,971
July	85,375	^R 1,173	1,208	7,865	-6,657	^R -16,240	^R -3,510	^R 99,641
August	95,362	^R 1,142	1,545	9,387	-7,843	^R -11,240	^R 2,153	^R 97,749
September	93,889	^R 1,087	835	8,723	-7,888	^R 4,560	^R 286	^R 82,241
October	92,794	^{RF} 1,069	917	9,159	-8,242	^R 11,911	^R -1,865	^R 75,575
November	92,244	NA	NA	NA	NA	NA	NA	NA
December	92,278	NA	NA	NA	NA	NA	NA	NA
Total	1,089,200	NA	NA	NA	NA	NA	NA	NA

^a Beginning in 2001, includes a small amount of refuse recovery (coal recaptured from a refuse mine and cleaned to reduce the concentration of noncombustible materials).

^b Waste coal (including fine coal, coal obtained from a refuse bank or slurry dam, anthracite culm, bituminous gob, and lignite waste) consumed by the electric power and industrial sectors. Beginning in 1989, waste coal supplied is counted as a supply-side item to balance the same amount of waste coal included in "Consumption."

^c Net imports equal imports minus exports. A minus sign indicates exports are greater than imports.

^d A negative value indicates a decrease in stocks; a positive value indicates an increase.

^e "Losses and Unaccounted for" is calculated as the sum of production, imports,

and waste coal supplied, minus exports, stock change, and consumption.

^f In 1973, stock change is included in "Losses and Unaccounted for."

^R=Revised. ^{NA}=Not available. ^F=Forecast.

Notes: • For methodology used to calculate production, consumption, and stocks, see Note 1, "Coal Production," Note 2, "Coal Consumption," and Note 3, "Coal Stocks," at end of section. • Data include refined coal. • Data values preceded by "F" are derived from the U.S. Energy Information Administration's Short-Term Integrated Forecasting System. See Note 4, "Coal Forecast Values," at end of section. • Totals may not equal sum of components due to independent rounding. • Geographic coverage is the 50 States and the District of Columbia.

Web Page: See <http://www.eia.gov/totalenergy/data/monthly/#coal> for all available data beginning in 1973.

Sources: See end of section.

Table 6.2 Coal Consumption by Sector
(Thousand Short Tons)

	End-Use Sectors										Electric Power Sector ^{e,f}	Total
	Residential	Commercial			Coke Plants	Industrial			Transportation			
		CHP ^a	Other ^b	Total		Other Industrial	CHP ^c	Non-CHP ^d		Total		
1973 Total	4,113	(^g)	7,004	7,004	94,101	(^h)	68,038	68,038	162,139	116	389,212	562,584
1975 Total	2,823	(^g)	6,587	6,587	83,598	(^h)	63,646	63,646	147,244	24	405,962	562,640
1980 Total	1,355	(^g)	5,097	5,097	66,657	(^h)	60,347	60,347	127,004	(^h)	569,274	702,730
1985 Total	1,711	(^g)	6,068	6,068	41,056	(^h)	75,372	75,372	116,429	(^h)	693,841	818,049
1990 Total	1,345	1,191	4,189	5,379	38,877	27,781	48,549	76,330	115,207	(^h)	782,567	904,498
1995 Total	755	1,419	3,633	5,052	33,011	29,363	43,693	73,055	106,067	(^h)	850,230	962,104
1996 Total	721	1,660	3,625	5,285	31,706	29,434	42,254	71,689	103,395	(^h)	896,921	1,006,321
1997 Total	711	1,738	4,015	5,752	30,203	29,853	41,661	71,515	101,718	(^h)	921,364	1,029,544
1998 Total	534	1,443	2,879	4,322	28,189	28,553	38,887	67,439	95,628	(^h)	936,619	1,037,103
1999 Total	585	1,490	2,803	4,293	28,108	27,763	36,975	64,738	92,846	(^h)	940,922	1,038,647
2000 Total	454	1,547	2,126	3,673	28,939	28,031	37,177	65,208	94,147	(^h)	985,821	1,084,095
2001 Total	481	1,448	2,441	3,888	26,075	25,755	39,514	65,268	91,344	(^h)	964,433	1,060,146
2002 Total	533	1,405	2,506	3,912	23,656	26,232	34,515	60,747	84,403	(^h)	977,507	1,066,355
2003 Total	551	1,816	1,869	3,685	24,248	24,846	36,415	61,261	85,509	(^h)	1,005,116	1,094,861
2004 Total	512	1,917	2,693	4,610	23,670	26,613	35,582	62,195	85,865	(^h)	1,016,268	1,107,255
2005 Total	378	1,922	2,420	4,342	23,434	25,875	34,465	60,340	83,774	(^h)	1,037,485	1,125,978
2006 Total	290	1,886	1,050	2,936	22,957	25,262	34,210	59,472	82,429	(^h)	1,026,636	1,112,292
2007 Total	353	1,927	1,247	3,173	22,715	22,537	34,078	56,615	79,331	(^h)	1,045,141	1,127,998
2008 Total	351	2,021	1,134	3,155	22,070	21,902	32,491	54,393	76,463	(^h)	1,040,580	1,120,548
2009 January	44	208	148	356	1,390	1,793	2,225	4,018	5,409	(^h)	90,640	96,449
February	38	178	126	305	1,449	1,605	2,470	4,075	5,524	(^h)	74,254	80,121
March	36	170	120	290	1,559	1,692	2,289	3,981	5,540	(^h)	71,948	77,814
April	25	128	71	199	1,150	1,487	2,036	3,522	4,673	(^h)	67,123	72,019
May	22	117	65	181	1,118	1,550	1,967	3,517	4,635	(^h)	70,425	75,264
June	26	135	75	211	1,134	1,600	1,903	3,503	4,637	(^h)	78,954	83,827
July	23	137	49	186	1,032	1,659	1,991	3,650	4,682	(^h)	84,243	89,134
August	24	143	51	194	1,168	1,694	2,017	3,710	4,878	(^h)	86,635	91,731
September	21	127	45	172	1,250	1,611	2,136	3,747	4,997	(^h)	73,566	78,757
October	27	129	88	216	1,431	1,671	2,170	3,841	5,272	(^h)	74,520	80,035
November	31	151	103	255	1,274	1,622	2,257	3,878	5,153	(^h)	73,063	78,502
December	36	174	119	293	1,371	1,783	2,088	3,871	5,242	(^h)	88,255	93,826
Total	353	1,798	1,059	2,857	15,326	19,766	25,549	45,314	60,641	(^h)	933,627	997,478
2010 January	43	193	156	349	1,472	2,094	2,197	4,291	5,763	(^h)	90,452	96,607
February	37	167	136	303	1,584	1,978	2,329	4,306	5,891	(^h)	79,884	86,115
March	33	149	121	271	1,801	2,124	2,220	4,344	6,145	(^h)	76,110	82,559
April	21	117	54	171	1,786	2,220	2,067	4,287	6,073	(^h)	66,842	73,108
May	21	118	55	173	1,794	2,010	2,294	4,305	6,099	(^h)	75,597	81,890
June	24	135	62	197	1,772	1,898	2,378	4,276	6,049	(^h)	87,030	93,301
July	24	142	48	190	1,783	2,122	2,199	4,321	6,104	(^h)	94,519	100,837
August	25	152	52	203	1,814	2,194	2,167	4,361	6,175	(^h)	94,247	100,651
September	22	133	45	178	1,894	1,941	2,432	4,373	6,268	(^h)	79,176	85,644
October	26	121	86	207	1,731	1,958	2,419	4,376	6,107	(^h)	70,492	76,831
November	27	128	90	218	1,787	1,854	2,538	4,392	6,179	(^h)	72,514	78,938
December	35	165	116	281	1,874	2,246	2,202	4,448	6,321	(^h)	88,189	94,826
Total	339	1,720	1,022	2,742	21,092	24,638	27,443	52,082	73,174	(^h)	975,052	1,051,307
2011 January	40	178	144	322	1,746	2,320	2,139	4,458	6,204	(^h)	89,682	96,248
February	37	165	133	298	1,623	2,044	2,386	4,430	6,053	(^h)	73,156	79,544
March	35	158	127	285	1,819	2,088	2,371	4,459	6,278	(^h)	72,009	78,607
April	23	124	63	187	1,668	1,767	R 2,463	R 4,230	R 5,898	(^h)	66,741	R 72,849
May	24	128	65	193	1,878	2,126	R 2,085	R 4,211	R 6,088	(^h)	73,100	R 79,405
June	R 23	R 124	R 63	R 187	R 1,846	R 2,056	R 2,159	R 4,215	R 6,061	(^h)	83,700	R 89,971
July	R 20	R 134	R 30	R 165	R 1,670	2,208	R 1,842	R 4,050	R 5,720	(^h)	93,736	R 99,641
August	R 19	R 124	R 28	R 152	R 1,863	2,182	R 1,865	R 4,048	R 5,910	(^h)	91,667	R 97,749
September	R 18	R 121	R 27	R 149	R 1,874	2,100	R 1,969	R 4,069	R 5,943	(^h)	76,131	R 82,241
October	F 26	F 116	F 96	F 213	F 2,449	2,080	F 1,699	F 3,779	F 6,228	(^h)	69,109	F 75,575
10-Month Total	E 266	1,372	E 778	E 2,150	E 18,435	20,971	E 20,978	E 41,949	E 60,385	(^h)	789,030	851,831
2010 10-Month Total	277	1,427	815	2,243	17,431	20,539	22,703	43,242	60,673	(^h)	814,349	877,542
2009 10-Month Total	285	1,473	837	2,310	12,681	16,361	21,204	37,565	50,246	(^h)	772,308	825,149

^a Commercial combined-heat-and-power (CHP) and a small number of commercial electricity-only plants, such as those at hospitals and universities. See Note, "Classification of Power Plants Into Energy-Use Sectors," at end of Section 7.

^b All commercial sector fuel use other than that in "Commercial CHP."

^c Industrial combined-heat-and-power (CHP) and a small number of industrial electricity-only plants. See Note, "Classification of Power Plants Into Energy-Use Sectors," at end of Section 7.

^d All industrial sector fuel use other than that in "Coke Plants" and "Industrial CHP."

^e The electric power sector comprises electricity-only and combined-heat-and-power (CHP) plants within the NAICS 22 category whose primary business is to sell electricity, or electricity and heat, to the public.

^f Through 1988, data are for consumption at electric utilities only. Beginning in 1989, data also include consumption at independent power producers.

^g Included in "Commercial Other."

^h Included in "Industrial Non-CHP."

R=Revised. E=Estimate. F=Forecast.

Notes: • CHP monthly values are from Table 7.4c; electric power sector monthly values are from Table 7.4b; all other monthly values are estimates derived from collected quarterly and annual data. See Note 2, "Coal Consumption," at end of section. • Data include refined coal. • Data values preceded by "F" are derived from the U.S. Energy Information Administration's Short-Term Integrated Forecasting System. See Note 4, "Coal Forecast Values," at end of section. • Totals may not equal sum of components due to independent rounding. • Geographic coverage is the 50 States and the District of Columbia.

Web Page: See <http://www.eia.gov/totalenergy/data/monthly/#coal> for all available data beginning in 1973.

Sources: See end of section.

Table 6.3 Coal Stocks by Sector
(Thousand Short Tons)

	Producers and Distributors	End-Use Sectors					Electric Power Sector ^{b,c}	Total
		Residential and Commercial	Industrial			Total		
			Coke Plants	Other ^a	Total			
1973 Year	12,530	290	6,998	10,370	17,368	17,658	86,967	117,155
1975 Year	12,108	233	8,797	8,529	17,326	17,559	110,724	140,391
1980 Year	24,379	NA	9,067	11,951	21,018	21,018	183,010	228,407
1985 Year	33,133	NA	3,420	10,438	13,857	13,857	156,376	203,367
1990 Year	33,418	NA	3,329	8,716	12,044	12,044	156,166	201,629
1995 Year	34,444	NA	2,632	5,702	8,334	8,334	126,304	169,083
1996 Year	28,648	NA	2,667	5,688	8,355	8,355	114,623	151,627
1997 Year	33,973	NA	1,978	5,597	7,576	7,576	98,826	140,374
1998 Year	36,530	NA	2,026	5,545	7,571	7,571	120,501	164,602
1999 Year	39,475	NA	1,943	5,569	7,511	7,511	^c 141,604	188,590
2000 Year	31,905	NA	1,494	4,587	6,081	6,081	102,296	140,282
2001 Year	35,900	NA	1,510	6,006	7,516	7,516	138,496	181,912
2002 Year	43,257	NA	1,364	5,792	7,156	7,156	141,714	192,127
2003 Year	38,277	NA	905	4,718	5,623	5,623	121,567	165,468
2004 Year	41,151	NA	1,344	4,842	6,186	6,186	106,669	154,006
2005 Year	34,971	NA	2,615	5,582	8,196	8,196	101,137	144,304
2006 Year	36,548	NA	2,928	6,506	9,434	9,434	140,964	186,946
2007 Year	33,977	NA	1,936	5,624	7,560	7,560	151,221	192,758
2008 Year	34,688	498	2,331	6,007	8,338	8,836	161,589	205,112
2009 January	38,394	490	2,260	5,788	8,049	8,539	156,075	203,008
February	42,066	483	2,190	5,570	7,760	8,243	160,601	210,909
March	41,257	475	2,119	5,352	7,471	7,946	174,223	223,426
April	43,195	477	2,000	5,266	7,266	7,744	185,790	236,729
May	41,622	480	1,880	5,181	7,061	7,541	195,103	244,266
June	44,018	482	1,760	5,096	6,856	7,338	195,656	247,012
July	45,372	496	1,702	5,099	6,800	7,297	193,563	246,232
August	42,457	510	1,644	5,101	6,745	7,255	191,532	241,244
September	41,690	524	1,585	5,104	6,690	7,214	197,208	246,112
October	43,882	526	1,683	5,106	6,789	7,314	199,477	250,673
November	42,217	527	1,780	5,108	6,888	7,415	203,765	253,397
December	47,718	529	1,957	5,109	7,066	7,595	189,467	244,780
2010 January	48,854	510	1,832	5,515	7,347	7,857	178,091	234,802
February	49,069	490	1,708	5,921	7,629	8,119	171,026	228,214
March	50,936	471	1,583	6,326	7,910	8,381	177,742	237,058
April	50,761	482	1,715	6,358	8,073	8,556	189,260	248,577
May	50,900	494	1,846	6,391	8,237	8,730	191,669	251,299
June	51,497	505	1,978	6,423	8,400	8,905	181,490	241,892
July	47,935	509	1,948	6,425	8,373	8,882	169,504	226,322
August	48,638	513	1,918	6,427	8,346	8,859	159,987	217,484
September	49,913	517	1,889	6,430	8,319	8,836	163,776	222,524
October	49,430	529	1,901	6,403	8,304	8,833	175,686	233,949
November	50,571	541	1,913	6,376	8,289	8,830	183,389	242,790
December	49,820	552	1,925	6,350	8,275	8,827	174,917	233,564
2011 January	48,295	536	1,937	6,076	8,012	8,548	164,840	221,684
February	45,750	520	1,948	5,802	7,750	8,269	161,439	215,458
March	44,336	503	1,959	5,528	7,487	7,990	166,737	219,063
April	45,585	500	1,958	^R 5,717	^R 7,675	^R 8,175	173,999	^R 227,759
May	46,775	497	1,957	^R 5,906	^R 7,863	^R 8,360	174,619	^R 229,754
June	45,398	494	1,956	^R 6,096	^R 8,051	^R 8,545	165,707	^R 219,650
July	46,926	^R 498	^R 2,082	^R 5,937	^R 8,019	^R 8,517	147,967	^R 203,410
August	44,445	^R 502	^R 2,221	^R 5,777	^R 7,998	^R 8,500	139,225	^R 192,170
September	43,763	^R 506	^R 2,405	^R 5,618	^R 8,023	^R 8,529	144,438	^R 196,730
October	^F 44,415	^F 536	^F 2,034	^F 4,750	^F 6,784	^F 7,320	156,906	208,641

^a Through 1977, data are for stocks held by the manufacturing and transportation sectors. Beginning in 1978, data are for stocks held at manufacturing plants only.

^b The electric power sector comprises electricity-only and combined-heat-and-power (CHP) plants within the NAICS 22 category whose primary business is to sell electricity, or electricity and heat, to the public.

^c Through 1998, data are for stocks at electric utilities only. Beginning in 1999, data also include stocks at independent power producers.

R=Revised. NA=Not available. F=Forecast.

Notes: • Stocks are at end of period. • Electric power sector monthly values

are from Table 7.5; producers and distributors monthly values are estimates derived from collected annual data; all other monthly values are estimates derived from collected quarterly values. • Data include refined coal. • Data values preceded by "F" are derived from the U.S. Energy Information Administration's Short-Term Integrated Forecasting System. See Note 4, "Coal Forecast Values," at end of section. • Totals may not equal sum of components due to independent rounding. • Geographic coverage is the 50 States and the District of Columbia.

Web Page: See <http://www.eia.gov/totalenergy/data/monthly/#coal> for all available data beginning in 1973.

Sources: See end of section.

Coal

Note 1. Coal Production. Preliminary monthly estimates of national coal production are the sum of weekly estimates developed by the U.S. Energy Information Administration (EIA) and published in the *Weekly Coal Production* report. When a week extends into a new month, production is allocated on a daily basis and added to the appropriate month. Weekly estimates are based on Association of American Railroads (AAR) data showing the number of railcars loaded with coal during the week by Class I and certain other railroads.

Prior to 2002, the weekly coal production model converted AAR data into short tons of coal by using the average number of short tons of coal per railcar loaded reported in the “Quarterly Freight Commodity Statistics” from the Surface Transportation Board. If an average coal tonnage per railcar loaded was not available for a specific railroad, the national average was used. To derive the estimate of total weekly production, the total rail tonnage for the week was divided by the ratio of quarterly production shipped by rail and total quarterly production. Data for the corresponding quarter of previous years were used to derive this ratio. This method ensured that the seasonal variations were preserved in the production estimates.

Beginning in 2002, the weekly coal production model uses statistical autoregressive methods to estimate national coal production as a function of railcar loadings of coal, and heating degree-days and cooling degree-days. On Thursday of each week, EIA receives from the AAR data for the previous week. The latest weekly national data for heating degree-days and cooling degree-days are obtained from the National Oceanic and Atmospheric Administration’s Climate Prediction Center. The weekly coal model is run and a national level coal production estimate is obtained. The weekly coal model is refit every quarter after preliminary coal data are available.

When preliminary quarterly data become available, the monthly and weekly estimates are adjusted to conform to the quarterly figures. The adjustment procedure uses State-level production data and is explained in EIA’s *Quarterly Coal Report*. Initial estimates of annual production published in January of the following year are based on preliminary production data covering the first nine months (three quarters) and weekly/monthly estimates for the fourth quarter. The fourth quarter estimates may or may not be revised when preliminary data become available in March of the following year, depending on the magnitude of the difference between the estimates and the preliminary data. In any event, all quarterly, monthly, and weekly production figures are adjusted to conform to the final annual production data published in the *Monthly Energy Review* in the fall of the following year.

Note 2. Coal Consumption. Coal consumption data are reported by major end-use sector. Forecast data (designated

by an “F”) are derived from forecasted values shown in the EIA *Short-Term Energy Outlook* (DOE/EIA-0202) table titled “U.S. Coal Supply and Demand: Base Case.” The monthly estimates are based on the quarterly values, which are released in March, June, September, and December. The estimates are revised quarterly as collected data become available from the data sources. Sector-specific information follows.

Residential and Commercial—Coal consumption by the residential and commercial sectors is reported to EIA for the two sectors combined; EIA estimates the amount consumed by the sectors individually. To create the estimates, it is first assumed that an occupied coal-heated housing unit consumes fuel at the same Btu rate as an oil-heated housing unit. Then, for the years in which data are available on the number of occupied housing units by heating source (1973–1981 and subsequent odd-numbered years), residential consumption of coal is estimated by the following steps: a ratio is created of the number of occupied housing units heated by coal to the number of occupied housing units heated by oil; that ratio is then multiplied by the Btu quantity of oil consumed by the residential sector to derive an estimate of the Btu quantity of coal consumed by the residential sector; and, finally, the amount estimated as the residential sector consumption is subtracted from the residential and commercial sectors’ combined consumption to derive the commercial sector’s estimated consumption. The 2007 share is applied to 2008 forward, and the other missing years’ shares are interpolated.

Industrial Coke Plants—Prior to 1980, monthly coke plant consumption data were taken directly from reported data. For 1980–1987, coke plant consumption estimates were derived by proportioning reported quarterly data by using the ratios of monthly-to-quarterly consumption data in 1979, the last year in which monthly data were reported. Beginning in January 1988, monthly coke plant consumption estimates are derived from the reported quarterly data by using monthly ratios of raw steel production data from the American Iron and Steel Institute. The ratios are the monthly raw steel production from open hearth and basic oxygen process furnaces as a proportion of the quarterly production from those kinds of furnaces.

Industrial Other—Prior to 1978, monthly consumption data for the other industrial sector (all industrial users minus coke plants) were derived by using reported data to modify baseline consumption figures from the most recent Bureau of the Census Annual Survey of Manufactures or Census of Manufactures. For 1978 and 1979, monthly estimates were derived from data reported on Forms EIA-3 and EIA-6. For 1980–1987, monthly figures were estimated by proportioning quarterly data by using the ratios of monthly-to-quarterly consumption data in 1979, the last year in which monthly data were reported on Form EIA-3. Beginning in January 1988, monthly consumption for the other industrial sector is estimated from reported quarterly data by using ratios derived from industrial production indices published by the Board of Governors of the

Federal Reserve System. Indices for six major industry groups are used as the basis for calculating the ratios: food manufacturing, which is North American Industry Classification System (NAICS) code 311; paper manufacturing, NAICS 322; chemical manufacturing, NAICS 325; petroleum and coal products, NAICS 324; non-metallic mineral products manufacturing, NAICS 327; and primary metal manufacturing, NAICS 331. The monthly ratios are computed as the monthly sum of the weighted indices as a proportion of the quarterly sum of the weighted indices by using the 1977 proportion as the weights. Prior to 2008, quarterly consumption data for the other industrial sector were derived by adding beginning stocks at manufacturing plants to current receipts and subtracting ending stocks at manufacturing plants. In this calculation, current receipts are the greater of either reported receipts from manufacturing plants (Form EIA-3) or reported shipments to the other industrial sector (Form EIA-6), thereby ensuring that agriculture, forestry, fishing, and construction consumption data were included where appropriate. Beginning in 2008, quarterly consumption totals for other industrial coal include data for manufacturing and mining only. Over time, surveyed coal consumption data for agriculture, forestry, fishing, and construction dwindled to about 20,000 to 30,000 tons annually. Therefore, in 2008, EIA consolidated its programs by eliminating agriculture, forestry, fishing, and construction as surveyed sectors.

Electric Power Sector—Monthly consumption data for electric power plants are taken directly from reported data.

Note 3. Coal Stocks. Coal stocks data are reported by major end-use sector. Forecast data for the most recent months (designated by an “F”) are derived from forecasted values shown in the EIA *Short-Term Energy Outlook* (DOE/EIA-0202) table titled “U.S. Coal Supply and Demand: Base Case.” The monthly estimates are based on the quarterly values (released in March, June, September, and December) or annual values. The estimates are revised as collected data become available from the data sources. Sector-specific information follows.

Producers and Distributors—Prior to 1998, quarterly stocks at producers and distributors were taken directly from reported data. Monthly data were estimated by using one-third of the current quarterly change to indicate the monthly change in stocks. Beginning in 1998, end-of-year stocks are taken from reported data. Monthly stocks are estimated by a model.

Residential and Commercial—Prior to 1980, stock estimates for the residential and commercial sector were taken directly from reported data. For 1980-2007, stock estimates were not collected. Beginning in 2008, quarterly stocks data are collected on Form EIA-3 (data for “Commercial and Institutional Coal Users”).

Industrial Coke Plants—Prior to 1980, monthly stocks at coke plants were taken directly from reported data.

Beginning in 1980, coke plant stocks are estimated by using one-third of the current quarterly change to indicate the monthly change in stocks. Quarterly stocks are taken directly from data reported on Form EIA-5.

Industrial Other—Prior to 1978, stocks for the other industrial sector were derived by using reported data to modify baseline figures from a one-time Bureau of Mines survey of consumers. For 1978–1982, monthly estimates were derived by judgmentally proportioning reported quarterly data based on representative seasonal patterns of supply and demand. Beginning in 1983, other industrial coal stocks are estimated as indicated above for coke plants. Quarterly stocks are taken directly from data reported on Form EIA-3 and therefore include only manufacturing industries; data for agriculture, forestry, fishing, mining, and construction stocks are not available.

Electric Power Sector—Monthly stocks data at electric power plants are taken directly from reported data.

Note 4. Coal Forecast Values. Data values preceded by “F” in this section are forecast values. They are derived from EIA Short-Term Integrated Forecasting System (STIFS). The model is driven primarily by data and assumptions about key macroeconomic variables, the world oil price, and weather. The coal forecast relies on other variables as well, such as alternative fuel prices (natural gas and oil) and power generation by sources other than fossil fuels, including nuclear and hydroelectric power. Each month, EIA staff review the model output and make adjustments, if appropriate, based on their knowledge of developments in the coal industry.

The STIFS model results are published monthly in EIA’s *Short-Term Energy Outlook*, which is accessible on the Web at <http://www.eia.gov/emeu/steo/pub/contents.html>.

Note 5. Additional Coal Information. EIA’s *Quarterly Coal Report* provides additional information about coal data and estimation procedures.

Table 6.1 Sources

Production

1973–September 1977: U.S. Department of the Interior, Bureau of Mines, *Minerals Yearbook* and *Minerals Industry Surveys*.

October 1977 forward: U.S. Energy Information Administration (EIA), *Weekly Coal Production*.

Waste Coal Supplied

1989–1997: EIA, Form EIA-867, “Annual Nonutility Power Producer Report.”

1998–2000: EIA, Form EIA-860B, “Annual Electric Generator Report—Nonutility.”

2001–2003: EIA, Form EIA-906, “Power Plant Report,” and Form EIA-3, “Quarterly Coal Consumption and

Quality Report—Manufacturing Plants.”

2004–2007: EIA, Form EIA-906, “Power Plant Report,” Form EIA-920, “Combined Heat and Power Plant Report,” and Form EIA-3, “Quarterly Coal Consumption and Quality Report—Manufacturing Plants.”

2008 forward: EIA, Form EIA-923, “Power Plant Operations Report,” and Form EIA-3, “Quarterly Coal Consumption and Quality Report, Manufacturing and Transformation/Processing Coal Plants and Commercial and Institutional Coal Users”; and, for forecast values, EIA, Short-Term Integrated Forecasting System.

Imports and Exports

U.S. Department of Commerce, Bureau of the Census, Monthly Reports IM 145 (Imports) and EM 545 (Exports).

Stock Change

Calculated from data in Table 6.3.

Losses and Unaccounted for

Calculated as the sum of production, imports, and waste coal supplied, minus exports, stock change, and consumption.

Consumption

Table 6.2.

Table 6.2 Sources

Residential and Commercial Total

Coal consumption by the residential and commercial sectors combined is reported to the U.S. Energy Information Administration (EIA). EIA estimates the sectors individually using the method described in Note 2, “Consumption,” at the end of Section 6. Data for the residential and commercial sectors combined are from:

1973–1976: U.S. Department of the Interior (DOI), Bureau of Mines (BOM), *Minerals Yearbook*.

January–September 1977: DOI, BOM, Form 6-1400, “Monthly Coal Report, Retail Dealers—Upper Lake Docks.” October 1977–1979: EIA, Form EIA-2, “Monthly Coal Report, Retail Dealers—Upper Lake Docks.”

1980–1997: EIA, Form EIA-6, “Coal Distribution Report,” quarterly.

1998–2007: DOI, Mine Safety and Health Administration, Form 7000-2, “Quarterly Mine Employment and Coal Production.”

2008 forward: EIA, Form EIA-3, “Quarterly Coal Consumption and Quality Report, Manufacturing and Transformation/Processing Coal Plants and Commercial and Institutional Coal Users” (data for “Commercial and Institutional Coal Users”); and, for forecast values, EIA, Short-Term Integrated Forecasting System.

Commercial CHP

Table 7.4c.

Commercial Other

Calculated as “Commercial Total” minus “Commercial CHP.”

Industrial Coke Plants

1973–September 1977: DOI, BOM, *Minerals Yearbook* and *Minerals Industry Surveys*.

October 1977–1980: EIA, Form EIA-5/5A, “Coke and Coal Chemicals—Monthly/Annual Supplement.”

1981–1984: EIA, Form EIA-5/5A, “Coke Plant Report—Quarterly/Annual Supplement.”

1985 forward: EIA, Form EIA-5, “Coke Plant Report—Quarterly”; and, for forecast values, EIA, Short-Term Integrated Forecasting System.

Other Industrial Total

1973–September 1977: DOI, BOM, *Minerals Yearbook* and *Minerals Industry Surveys*.

October 1977–1979: EIA, Form EIA-3, “Monthly Coal Consumption Report—Manufacturing Plants.”

1980–1997: EIA, Form EIA-3, “Quarterly Coal Consumption Report—Manufacturing Plants,” and Form EIA-6, “Coal Distribution Report,” quarterly.

1998–2007: EIA, Form EIA-3, “Quarterly Coal Consumption Report—Manufacturing Plants,” Form EIA-6A, “Coal Distribution Report,” annual, and Form EIA-7A, “Coal Production Report,” annual.

2008 forward: EIA, Form EIA-3, “Quarterly Coal Consumption and Quality Report, Manufacturing and Transformation/Processing Coal Plants and Commercial and Institutional Coal Users,” and Form EIA-7A, “Coal Production Report,” annual; and, for forecast values, EIA, Short-Term Integrated Forecasting System.

Other Industrial CHP

Table 7.4c.

Other Industrial Non-CHP

Calculated as “Other Industrial Total” minus “Other Industrial CHP.”

Transportation

1973–1976: DOI, BOM, *Minerals Yearbook*.

January–September 1977: DOI, BOM, Form 6-1400, “Monthly Coal Report, Retail Dealers—Upper Lake Docks.”

October–December 1977: EIA, Form EIA-6, “Coal Distribution Report,” quarterly.

Electric Power

Table 7.4b.

Table 6.3 Sources

Producers and Distributors

1973–1979: U.S. Department of the Interior (DOI), Bureau of Mines (BOM), Form 6-1419Q, “Distribution of Bituminous Coal and Lignite Shipments.”

1980–1997: U.S. Energy Information Administration (EIA), Form EIA-6, “Coal Distribution Report,” quarterly.

1998–2007: EIA, Form EIA-6A, “Coal Distribution Report,” annual.

2008 forward: EIA, Form EIA-7A, “Coal Production Report,” annual, and Form EIA-8A, “Coal Stocks Report,” annual; and, for forecast values, EIA, Short-Term Integrated Forecasting System.

Residential and Commercial

1973–1976: DOI, BOM, *Minerals Yearbook*.

January–September 1977: DOI, BOM, Form 6-1400, “Monthly Coal Report, Retail Dealers—Upper Lake Docks.”

October 1977–1979: EIA, Form EIA-2, “Monthly Coal Report, Retail Dealers—Upper Lake Docks.”

2008 forward: EIA, Form EIA-3, “Quarterly Coal Consumption and Quality Report, Manufacturing and Transformation/Processing Coal Plants and Commercial and Institutional Coal Users” (data for “Commercial and Institutional Coal Users”); and, for forecast values, EIA, Short-Term Integrated Forecasting System.

Industrial Coke Plants

1973–September 1977: DOI, BOM, *Minerals Yearbook* and *Minerals Industry Surveys*.

October 1977–1980: EIA, Form EIA-5/5A, “Coke and Coal

Chemicals—Monthly/Annual.”

1981–1984: EIA, Form EIA 5/5A, “Coke Plant Report—Quarterly/Annual Supplement.”

1985 forward: EIA, Form EIA-5, “Coke Plant Report—Quarterly”; and, for forecast values, EIA, Short-Term Integrated Forecasting System.

Industrial Other

1973–September 1977: DOI, BOM, *Minerals Yearbook* and *Minerals Industry Surveys*.

October 1977–1979: EIA, Form EIA-3, “Monthly Coal Consumption Report—Manufacturing Plants.”

1998–2007: EIA, Form EIA-3, “Quarterly Coal Consumption Report—Manufacturing Plants.”

2008 forward: EIA, Form EIA-3, “Quarterly Coal Consumption and Quality Report, Manufacturing and Transformation/Processing Coal Plants and Commercial and Institutional Coal Users”; and, for forecast values, EIA, Short-Term Integrated Forecasting System.

Electric Power

Table 7.5.