



# ILLINOIS

2014 EIA reports and publications

## RENEWABLES

DECEMBER 18, 2014

Wind power capacity additions were expected to increase in last quarter of 2014

- Project developers have reported to the U.S. Energy Information Administration (EIA) an additional 11 gigawatts (GW) of wind projects with expected completion dates in 2015, primarily in states such as Texas, Oklahoma, Illinois, Iowa, and Minnesota.

### ILLINOIS ENERGY HIGHLIGHTS:

Illinois is a top producer of ethanol, with a production capacity of 1.5 billion gallons per year.

Illinois ranked first in the nation in 2013 in both nuclear power generating capacity and net electricity generation from nuclear power.

Illinois leads the Midwest in crude oil refining capacity, and it ranked fourth in the nation as of January 2013.

Annually, Illinois households use 129 million British thermal units (Btu) of site energy per home, 44% more than the U.S. average.

### EIA'S ILLINOIS FLICKR ALBUM

<http://bit.ly/XCGE6Y>

### ILLINOIS STATE PROFILE

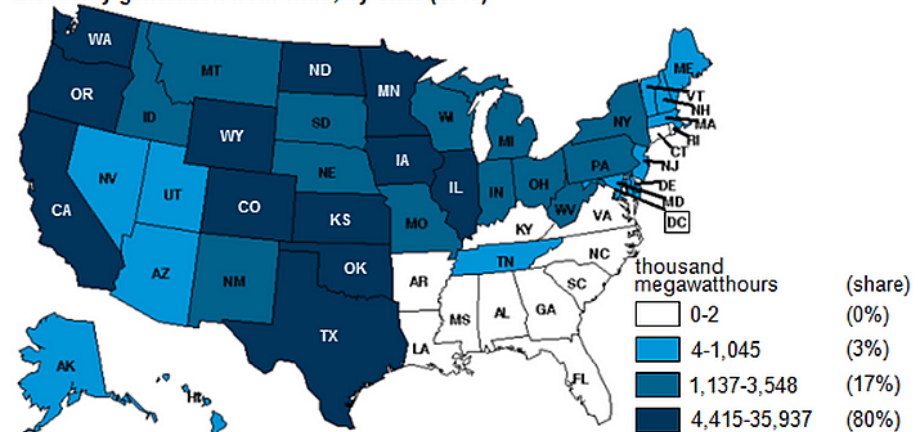
<http://www.eia.gov/state/?sid=IL>

APRIL 15, 2014

Twelve states produced 80% of U.S. wind power in 2013

- According to preliminary generation data released in the EIA's March 2014 *Electric Power Monthly* report, Illinois was the country's fifth-largest producer of wind power with 9.6 million megawatthours (MWh) of electricity in 2013, accounting for 5.7% of the U.S. net electricity generation from wind.

Electricity generation from wind, by state (2013)



Source: U.S. Energy Information Administration, *Electric Power Monthly*

## ADDITIONAL STATE FACTS

- Illinois has 28 natural gas storage fields with a total combined storage capacity slightly below than 1 trillion cubic feet of natural gas. The state's natural gas storage capacity is second only to Michigan.
- Illinois recoverable coal reserves at producing mines are the second largest in the nation, and account for about one-eighth of the nation's recoverable coal reserves at producing mines and one-fourth of the nation's bituminous coal reserves.
- Generation from Illinois nuclear power plants accounted for more than 12% of the nation's nuclear power.

## NEW TOOLS RELEASED IN 2014:

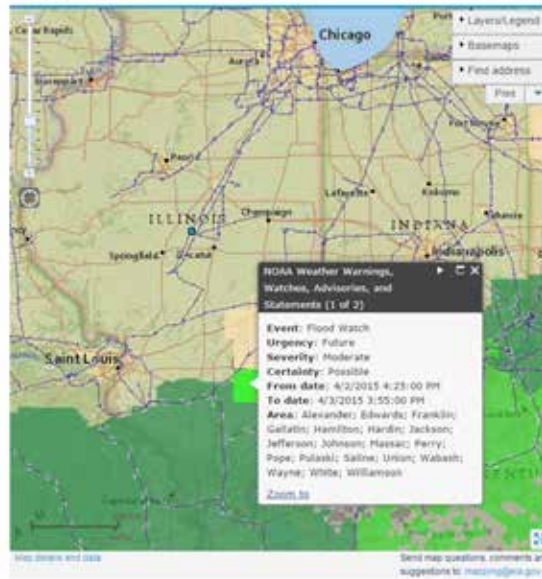
### EIA's Illinois Flickr album

- The [Illinois album on EIA's Flickr page](#) provides access to images related to the state's energy production, consumption, prices, and other topics covered by EIA.

### Energy Disruptions Page

- EIA provides real-time storm information on an [interactive map](#) that shows key layers of energy infrastructure that could be impacted by significant weather events.

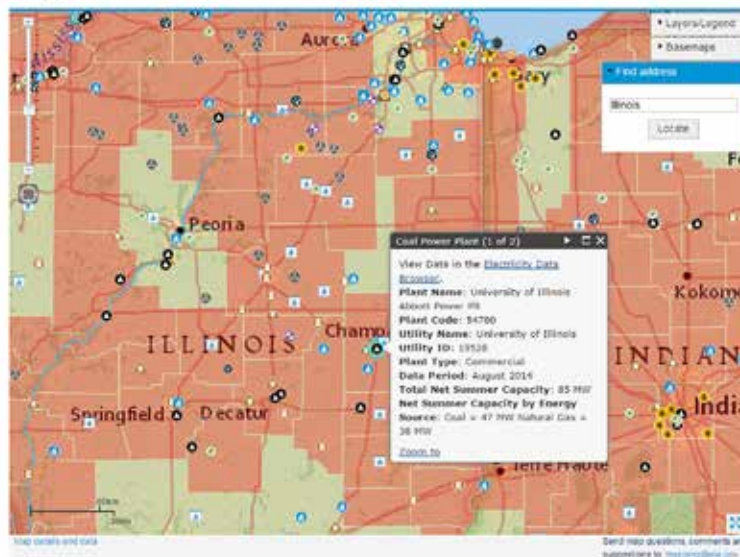
Energy Infrastructure with Real-time Storm Information



### Flood Vulnerability Assessment Map

- EIA's [Flood Vulnerability Assessment Map](#) combines EIA's U.S. Energy Mapping System with flood hazard information from the Federal Emergency Management Agency (FEMA) to help state, county, city, and private sector planners determine if a specific area or energy asset is vulnerable to flooding caused by hurricanes, overflowing rivers, flash floods, and other wet-weather events.

Energy Infrastructure with FEMA National Flood Hazard



FOLLOW US!

