

# Summary Statistics

---

**Table 1. Crude oil prices**

dollars per barrel

Year month	Domestic first purchase prices	Average F.O.B.[a] cost of crude oil imports[b]	Average landed cost of crude oil imports[b]	Refiner acquisition cost of crude oil		
				Domestic	Imported	Composite
<b>1997 average</b>	17.23	16.94	18.11	19.61	18.53	19.04
<b>1998 average</b>	10.87	10.76	11.84	13.18	12.04	12.52
<b>1999 average</b>	15.56	16.47	17.23	17.90	17.26	17.51
<b>2000 average</b>	26.72	26.27	27.53	29.11	27.70	28.26
<b>2001 average</b>	21.84	20.46	21.82	24.33	22.00	22.95
<b>2002 average</b>	22.51	22.63	23.91	24.65	23.71	24.10
<b>2003 average</b>	27.56	25.86	27.69	29.82	27.71	28.53
<b>2004 average</b>	36.77	33.75	36.07	38.97	35.90	36.98
<b>2005 average</b>	50.28	47.60	49.29	52.94	48.86	50.24
<b>2006 average</b>	59.69	57.03	59.11	62.62	59.02	60.24
<b>2007 average</b>	66.52	66.36	67.97	69.65	67.04	67.94
<b>2008 average</b>	94.04	90.32	93.33	98.47	92.77	94.74
<b>2009 average</b>	56.35	57.78	60.23	59.49	59.17	59.29
<b>2010 average</b>	74.71	74.19	76.50	78.01	75.86	76.69
<b>2011 average</b>	95.73	101.66	102.92	100.71	102.63	101.87
<b>2012 average</b>	94.52	99.78	101.00	100.72	101.09	100.93
<b>2013 average</b>	95.99	96.56	96.99	102.91	98.11	100.49
<b>2014 average</b>	87.39	85.65	88.16	94.05	89.56	92.02
<b>2015 average</b>	44.39	41.91	45.38	49.94	46.38	48.39
<b>2016 average</b>	38.29	36.37	38.56	42.41	38.75	40.66
<b>2017 average</b>	48.05	45.58	48.50	52.05	49.12	50.68
<b>2018 average</b>	61.40	56.31	58.89	67.05	60.95	64.38
<b>2019 average</b>	55.59	54.27	56.60	60.31	57.94	59.38
<b>2020 average</b>	36.86	33.66	36.42	41.23	37.41	39.75
<b>2021 average</b>	65.84	62.04	65.05	69.07	65.85	67.83
<b>2022 average</b>	93.97	85.98	89.62	97.45	91.83	95.29
<b>2023</b>						
January	75.71	62.82	67.35	79.23	70.32	75.70
February	74.32	60.58	65.40	78.34	69.67	74.86
March	72.09	62.79	66.32	75.84	68.53	73.00
April	77.23	68.95	71.15	80.51	75.23	78.53
May	70.14	63.68	68.58	74.20	70.05	72.57
June	68.59	63.82	69.36	72.50	69.58	71.39
July	74.07	69.71	73.92	77.41	74.83	76.41
August	79.78	75.82	78.57	82.22	81.10	81.78
September	87.96	79.77	83.09	90.76	87.14	89.32
October	84.65	76.04	79.90	88.68	83.21	86.60
November	77.46	69.33	73.50	82.10	76.42	79.70
December	71.01	60.13	65.95	75.31	68.09	72.34
<b>2023 average</b>	76.10	67.65	71.82	79.71	74.53	77.67
<b>2024</b>						
January	72.26	62.58	66.46	75.89	69.37	73.28
February	74.96	67.87	72.90	78.19	73.00	76.19
March	78.97	70.54	73.39	82.16	75.99	79.67
April	83.15	75.76	78.89	86.30	81.93	84.47
May	78.16	71.89	76.18	82.24	78.34	80.67
June	77.45	73.02	75.95	81.28	78.85	80.28
July	79.07	72.20	76.83	82.22	79.51	81.18
August	74.97	69.38	72.86	79.08	74.75	77.39
September	68.70	63.80	67.61	72.96	69.77	71.75
October	70.39	65.17	67.95	73.70	70.77	72.61
November	68.19	63.37	67.23	72.01	69.13	70.89
December	68.12	63.96	R66.69	71.62	68.28	70.37
<b>2024 average</b>	74.46	68.48	71.91	78.06	74.28	76.57
<b>2025</b>						
January	R73.15	R66.50	R69.37	R76.26	R72.71	R74.93
February	70.11	63.61	67.59	R74.11	R71.25	R73.05
March[c]	NA	NA	NA	E70.80	E68.08	E69.74

NA = Not available.

E = Estimated data.

R = Revised data.

[a] Free on Board. See Glossary.

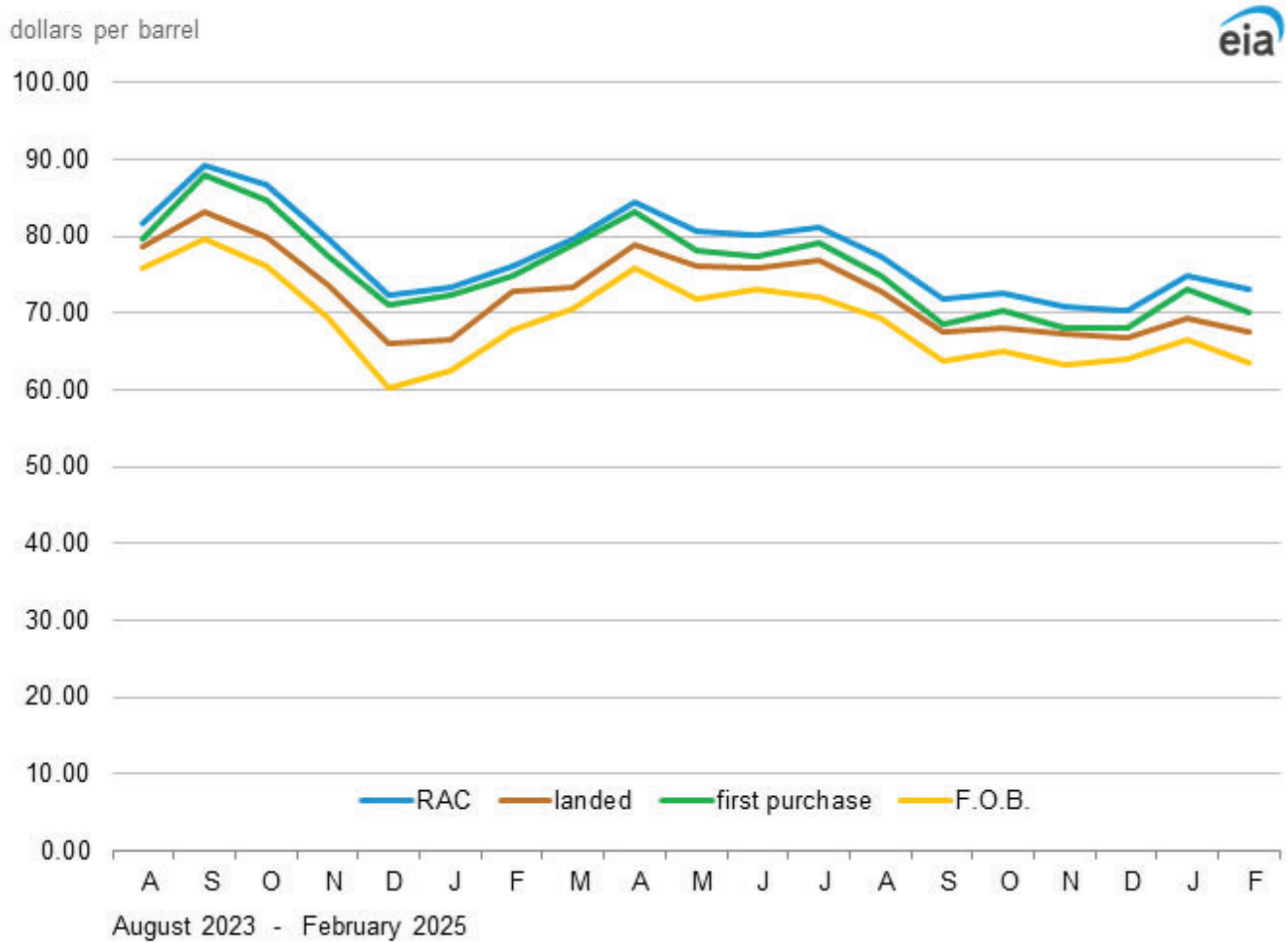
[b] Values reflect the month of acquisition, which can be the month of loading, the month of landing, or sometime between those events. Prices for crude oil can be determined at a time other than the acquisition date. See the Explanatory Notes section.

[c] Data are initial estimates calculated using regression models based on past and present values, spot prices, and other internally computed data. For an explanation of estimation methodology, see the Preface.

Notes: - In November 2018, a new crude stream was added and a selected crude stream was deleted for North Dakota. In January 2004, new crude streams were added and selected crude streams were discontinued for California, Gulf Coast, Oklahoma, and Texas. - Values for Domestic First Purchase Price and Refiner Acquisition Cost for the current two months, and for average F.O.B. and average landed costs, for the current three months are preliminary. Values shown for previous months may be revised. Data through 2023 are final.

Data source: Domestic first purchase prices -- See source from Table 18. Crude oil imports costs -- See Sources from Table 21. Refiner acquisition costs -- U.S. Energy Information Administration, Form EIA-14, Refiners' Monthly Cost Report.

Figure 1. Crude oil prices



Data source: U.S. Energy Information Administration, Form EIA-182, *Domestic Crude Oil First Purchase Report*, Form EIA-856, *Monthly Foreign Crude Oil Acquisition Report*, and Form EIA-14, *Refiners' Monthly Cost Report*. Note: RAC stands for refiner acquisition cost.

**Table 1A. Refiner acquisition cost of crude oil by PAD Districts**

dollars per barrel

Year month	United States			PAD District 1			PAD District 2		
	Domestic	Imported	Composite	Domestic	Imported	Composite	Domestic	Imported	Composite
<b>2004</b>	38.97	35.90	36.98	40.75	38.29	38.34	40.80	35.63	38.38
<b>2005</b>	52.94	48.86	50.24	56.89	53.29	53.35	54.57	46.11	50.75
<b>2006</b>	62.62	59.02	60.24	66.92	63.53	63.60	63.66	55.19	59.70
<b>2007</b>	69.65	67.04	67.94	70.62	72.48	72.44	71.10	62.17	66.90
<b>2008</b>	98.47	92.77	94.74	100.30	96.90	96.97	100.98	88.45	94.93
<b>2009</b>	59.49	59.17	59.29	59.64	61.68	61.63	60.00	57.00	58.64
<b>2010</b>	78.01	75.86	76.69	75.90	80.03	79.91	78.85	72.24	75.92
<b>2011</b>	100.71	102.63	101.87	98.88	111.53	111.01	96.81	89.15	93.18
<b>2012</b>	100.72	101.09	100.93	104.45	112.27	111.50	95.04	83.90	89.44
<b>2013</b>	102.91	98.11	100.49	106.98	106.74	106.80	100.63	85.43	93.26
<b>2014</b>	94.05	89.56	92.02	96.95	96.51	96.70	93.08	81.66	87.51
<b>2015</b>	49.94	46.38	48.39	52.60	50.40	51.37	49.33	42.70	46.13
<b>2016</b>	42.41	38.75	40.66	44.58	42.54	43.00	43.76	36.19	39.95
<b>2017</b>	52.05	49.12	50.68	56.98	53.46	53.87	52.03	45.21	48.63
<b>2018</b>	67.05	60.95	64.38	69.71	69.63	69.64	65.69	49.35	57.85
<b>2019</b>	60.31	57.94	59.38	64.02	65.37	65.02	58.17	50.92	54.59
<b>2020</b>	41.23	37.41	39.75	44.76	43.73	44.07	40.66	33.48	37.17
<b>2021</b>	69.07	65.85	67.83	72.07	71.15	71.30	69.86	61.99	66.27
<b>2022</b>	97.45	91.83	95.29	100.49	102.13	101.86	98.14	86.09	93.01
<b>2023</b>									
January	79.23	70.32	75.70	81.54	84.00	83.55	80.01	60.13	70.68
February	78.34	69.67	74.86	82.33	82.78	82.70	78.81	60.56	70.70
March	75.84	68.53	73.00	79.21	78.48	78.63	75.99	61.79	69.55
April	80.51	75.23	78.53	89.31	83.69	85.02	81.37	70.29	76.59
May	74.20	70.05	72.57	77.04	79.05	78.74	74.11	66.28	70.71
June	72.50	69.58	71.39	75.06	77.87	77.48	72.37	65.01	69.37
July	77.41	74.83	76.41	78.46	81.98	81.39	78.01	69.95	74.59
August	82.22	81.10	81.78	83.56	87.59	87.04	81.66	77.31	79.82
September	90.76	87.14	89.32	92.58	93.14	93.07	91.70	83.14	87.77
October	88.68	83.21	86.60	89.86	90.91	90.77	88.89	79.29	84.21
November	82.10	76.42	79.70	82.68	88.18	87.48	81.00	70.96	75.69
December	75.31	68.09	72.34	79.05	81.01	80.74	73.95	60.32	66.82
<b>2023</b>	79.71	74.53	77.67	82.41	83.95	83.70	79.65	68.74	74.65
<b>2024</b>									
January	75.89	69.37	73.28	77.48	79.56	79.30	75.55	61.63	68.34
February	78.19	73.00	76.19	80.15	83.54	83.00	77.62	65.43	72.16
March	82.16	75.99	79.67	83.67	85.32	84.98	81.96	69.40	75.70
April	86.30	81.93	84.47	88.12	89.49	89.23	86.48	77.41	81.82
May	82.24	78.34	80.67	83.93	85.69	85.28	81.29	74.57	78.06
June	81.28	78.85	80.28	82.34	86.01	85.48	80.94	75.67	78.40
July	82.22	79.51	81.18	83.46	85.93	85.52	82.89	75.74	79.79
August	79.08	74.75	77.39	79.25	82.33	81.75	78.94	71.22	75.49
September	72.96	69.77	71.75	74.69	76.70	76.33	72.88	66.92	70.47
October	73.70	70.77	72.61	74.44	77.18	76.68	74.60	67.86	71.94
November	72.01	69.13	70.89	73.43	75.56	75.15	72.19	65.25	69.02
December	71.62	68.28	70.37	70.48	74.76	73.90	71.76	65.09	68.55
<b>2024</b>	78.06	74.28	76.57	79.40	81.91	81.46	78.06	69.80	74.23
<b>2025</b>									
January	R76.26	R72.71	R74.93	77.26	R77.64	R77.53	R77.13	R68.97	R73.17
February	R74.11	R71.25	R73.05	75.42	75.85	75.74	73.72	67.04	70.48

See footnotes at end of table.

**Table 1A. Refiner acquisition cost of crude oil by PAD Districts (cont.)**

dollars per barrel

Year month	PAD District 3			PAD District 4			PAD District 5		
	Domestic	Imported	Composite	Domestic	Imported	Composite	Domestic	Imported	Composite
2004	39.28	34.79	35.87	39.98	35.93	37.81	36.81	38.20	37.30
2005	53.17	47.77	48.99	53.50	48.54	50.89	50.61	50.77	50.67
2006	63.17	58.34	59.54	60.80	56.17	58.45	60.90	61.44	61.15
2007	70.58	66.34	67.48	65.79	60.81	63.43	67.47	69.42	68.34
2008	100.39	91.86	94.11	91.49	88.56	90.12	94.53	96.30	95.35
2009	60.61	59.21	59.64	56.30	56.53	56.39	57.79	60.07	58.78
2010	78.73	75.67	76.65	73.56	70.77	72.37	76.56	78.23	77.34
2011	103.24	104.78	104.24	89.34	84.87	87.61	103.83	105.68	104.73
2012	104.32	105.18	104.83	86.83	80.80	84.63	103.03	106.43	104.69
2013	104.64	101.42	103.02	88.96	80.75	85.21	103.82	105.12	104.40
2014	94.67	90.84	93.06	84.63	78.73	81.93	94.45	96.13	95.22
2015	50.16	46.49	48.75	44.77	39.73	42.28	50.30	50.91	50.59
2016	41.97	38.22	40.42	41.48	34.49	38.11	42.10	42.21	42.16
2017	51.74	49.12	50.73	50.43	43.05	47.19	53.44	52.77	53.08
2018	66.94	64.10	65.95	62.87	45.87	55.01	70.82	68.91	69.81
2019	60.44	59.49	60.19	54.65	49.53	52.26	64.45	64.24	64.34
2020	41.15	37.60	40.16	39.40	32.47	35.46	42.46	44.11	43.21
2021	68.73	66.37	68.15	67.72	60.45	63.44	69.71	70.23	69.99
2022	96.89	90.20	95.17	93.99	83.87	88.08	100.49	99.86	100.13
2023									
January	78.37	68.96	75.74	76.21	60.03	68.63	83.94	83.62	83.76
February	77.78	68.46	74.97	74.94	59.88	68.89	81.48	81.57	81.53
March	75.86	66.92	73.46	70.08	58.93	65.58	77.13	78.69	78.07
April	79.90	73.17	78.14	79.06	67.64	74.73	81.47	83.09	82.43
May	74.28	67.24	72.30	71.01	63.67	68.00	74.65	77.14	76.17
June	72.30	67.40	70.96	70.30	62.96	67.35	74.64	77.03	76.03
July	76.73	73.68	75.88	75.89	68.84	72.91	80.90	81.69	81.38
August	81.86	79.70	81.24	81.05	77.72	79.61	86.55	87.15	86.90
September	90.08	85.65	88.85	88.22	80.09	84.81	94.33	93.91	94.07
October	88.42	82.04	86.81	85.04	76.85	81.64	91.36	90.77	91.03
November	82.46	75.17	80.47	75.07	65.53	71.10	85.08	83.98	84.40
December	75.57	68.97	73.76	66.95	57.24	63.01	79.84	78.79	79.24
2023	79.47	73.09	77.71	76.20	66.91	72.35	82.54	83.11	82.88
2024									
January	75.76	69.86	74.29	69.46	60.87	65.97	80.09	79.35	79.67
February	78.26	73.44	77.04	72.45	64.12	69.12	81.08	80.14	80.54
March	82.12	76.55	80.51	76.08	67.15	72.43	84.65	84.12	84.36
April	86.08	80.99	84.61	81.17	74.12	78.26	89.05	89.55	89.35
May	82.66	77.11	81.01	76.03	72.09	74.40	83.82	85.51	84.77
June	81.27	75.89	79.77	75.76	74.44	75.18	84.32	86.02	85.39
July	81.65	76.76	80.41	77.87	75.58	76.84	86.07	86.61	86.41
August	79.17	72.10	77.31	73.73	71.30	72.79	81.11	81.06	81.08
September	72.99	66.49	71.27	68.09	65.81	67.11	74.55	76.41	75.69
October	73.16	67.68	71.68	70.27	67.14	69.04	76.65	77.49	77.16
November	71.78	67.52	70.64	68.30	64.00	66.59	74.73	75.23	75.05
December	71.44	66.63	70.25	67.95	64.17	66.42	74.08	74.45	74.30
2024	77.91	72.71	76.51	73.06	68.62	71.23	80.89	81.33	81.15
2025									
January	R75.88	R71.87	74.94	72.57	67.57	70.56	R78.41	R78.98	R78.76
February	74.30	69.87	73.29	68.48	66.75	67.76	75.46	78.79	77.49

R = Revised data.

Notes: United States is defined as the 50 states, the District of Columbia, Puerto Rico, the Virgin Islands, and all American territories and possessions. Values reflect the PAD District in which the crude oil is intended to be refined. - Values shown for the current month are preliminary. Values shown for the previous month may be revised. Data through 2023 are final.

Data source: U.S. Energy Information Administration Form EIA-14, *Refiners' Monthly Cost Report*, January 2004 to present.

**Table 2. U.S. refiner prices of petroleum products to end users**

dollars per gallon, excluding taxes

Year month	Motor gasoline	Aviation gasoline	Kerosene type jet fuel	Propane (consumer grade)	Kerosene	No. 2 distillate					Residual fuel oil	
						No. 1 distillate	No. 2 diesel fuel	No. 2 fuel oil	Average	No. 4 fuel[a]		
1994	0.73	0.95	0.53	0.53	0.66	0.64	0.55	0.57	0.55	0.50	0.35	
1995	0.76	1.00	0.54	0.49	0.58	0.62	0.56	0.56	0.56	0.50	0.39	
1996	0.84	1.11	0.65	0.60	0.74	0.72	0.68	0.67	0.68	0.60	0.45	
1997	0.83	1.12	0.61	0.55	0.74	0.68	0.64	0.63	0.64	0.56	0.42	
1998	0.67	0.97	0.45	0.40	0.50	0.55	0.49	0.48	0.49	0.42	0.30	
1999	0.78	1.05	0.54	0.45	0.60	0.62	0.58	0.55	0.58	0.47	0.37	
2000	1.10	1.30	0.89	0.60	1.12	0.98	0.93	0.92	0.93	0.76	0.60	
2001	1.03	1.32	0.77	0.50	1.04	0.90	0.84	0.82	0.84	0.67	0.53	
2002	0.94	1.28	0.72	0.41	0.99	0.82	0.76	0.73	0.75	0.65	0.56	
2003	1.15	1.49	0.87	0.57	1.22	1.01	0.94	0.93	0.94	0.85	0.69	
2004	1.43	1.81	1.20	0.83	1.16	1.26	1.24	1.17	1.23	1.01	0.73	
2005	1.82	2.23	1.73	1.08	1.95	1.83	1.78	1.70	1.77	W	1.04	
2006	2.12	2.68	1.99	1.35	2.24	2.13	2.09	1.98	2.09	W	1.21	
2007	2.34	2.84	2.16	1.48	2.26	2.28	2.26	2.24	2.26	W	1.37	
2008	2.77	3.27	3.05	1.89	3.28	2.98	3.15	2.98	3.14	W	1.96	
2009	1.88	2.44	1.70	1.22	2.67	2.14	1.83	1.96	1.84	W	1.34	
2010	2.30	3.02	2.20	1.48	3.06	2.70	2.31	2.46	2.31	W	1.71	
2011	3.05	3.80	3.05	1.70	3.61	3.46	3.11	3.19	3.11	W	2.40	
2012	3.15	3.97	3.10	1.13	3.84	3.58	3.20	3.35	3.20	W	2.59	
2013	3.04	3.93	2.97	1.02	3.84	3.48	3.12	3.33	3.12	W	2.48	
2014	2.85	3.98	2.77	1.09	W	3.11	2.92	3.32	2.92	W	2.32	
2015	2.00	W	1.62	0.48	W	1.82	1.81	2.01	1.82	W	1.28	
2016	1.73	W	1.31	0.49	W	1.70	1.51	1.71	1.51	W	0.94	
2017	1.97	W	1.62	0.77	W	2.23	1.81	2.01	1.81	W	1.28	
2018	2.30	W	2.11	0.92	3.11	2.60	2.25	2.38	2.25	-	1.66	
2019	2.24	W	1.97	0.60	W	2.44	2.11	2.26	2.11	-	1.58	
<b>2020</b>												
January	2.15	W	1.95	0.50	W	2.47	2.00	2.32	2.00	-	1.93	
February	2.06	W	1.66	0.46	W	2.30	1.83	2.11	1.83	-	1.73	
March	1.86	W	1.25	0.37	W	2.08	1.48	1.81	1.48	-	1.37	
April	1.49	W	0.74	0.36	W	1.55	1.13	1.22	1.13	-	0.97	
May	1.59	W	0.72	0.42	W	1.30	1.13	1.16	1.13	-	0.81	
June	1.76	W	1.04	0.51	3.32	1.48	1.35	1.33	1.35	-	0.94	
July	1.80	2.76	1.17	0.51	3.05	1.48	1.43	1.39	1.43	-	1.07	
August	1.81	2.80	1.18	0.54	3.16	W	1.45	1.46	1.45	-	1.22	
September	1.80	2.61	1.11	0.50	W	1.75	1.38	1.41	1.38	-	1.20	
October	1.77	2.49	1.13	0.54	W	1.87	1.40	1.36	1.40	-	1.15	
November	1.73	2.48	1.21	0.57	W	1.76	1.48	1.76	1.48	-	1.14	
December	1.82	2.67	1.39	0.69	W	1.97	1.62	2.00	1.62	-	1.29	
2020	1.82	2.68	1.29	0.50	W	1.89	1.48	1.66	1.48	-	1.24	
<b>2021</b>												
January	1.98	2.82	1.48	0.90	W	2.02	1.71	2.10	1.71	-	1.46	
February	2.20	3.14	1.64	0.97	W	2.19	1.93	2.17	1.93	-	1.61	
March	2.44	3.36	1.76	0.96	W	2.32	2.11	2.32	2.11	-	1.76	
April	2.49	3.36	1.72	0.85	W	2.32	2.09	2.18	2.09	-	1.75	
May	2.68	3.44	1.82	0.83	W	2.38	2.17	2.29	2.17	-	1.76	
June	3.00	3.49	1.90	0.96	W	2.51	2.22	2.34	2.22	-	1.86	
July	3.10	W	1.98	1.09	2.86	2.59	2.28	2.50	2.28	-	1.96	
August	3.14	W	1.96	1.12	W	2.59	2.26	2.39	2.26	-	1.90	
September	3.14	W	2.03	1.29	2.81	2.61	2.32	2.38	2.32	-	1.95	
October	3.20	3.78	2.30	1.45	3.42	2.86	2.56	2.67	2.56	-	2.09	
November	3.31	3.77	2.30	1.29	3.79	2.85	2.54	2.65	2.54	-	2.14	
December	3.28	W	2.16	1.09	3.27	2.81	2.37	2.76	2.37	-	2.09	
2021	2.56	3.46	1.95	1.08	W	2.52	2.20	2.41	2.20	-	1.86	
<b>2022</b>												
January	3.14	3.68	2.45	1.22	3.82	3.02	2.64	3.16	2.65	-	2.16	
February	R3.31	W	R2.65	1.36	4.04	R3.20	R2.90	3.26	R2.90	-	R2.43	
March	3.99	4.58	3.32	1.44	4.68	3.86	3.68	3.92	3.69	-	2.86	

NA = Not available.

- = No data reported.

W = Withheld to avoid disclosure of individual company data.

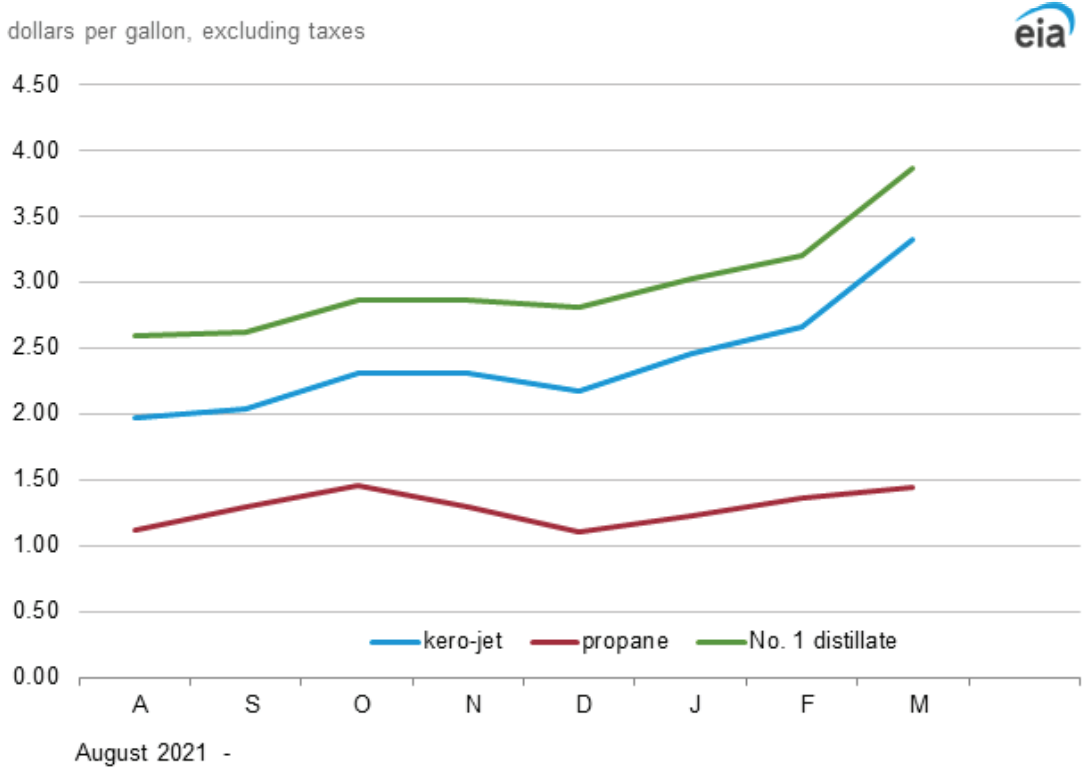
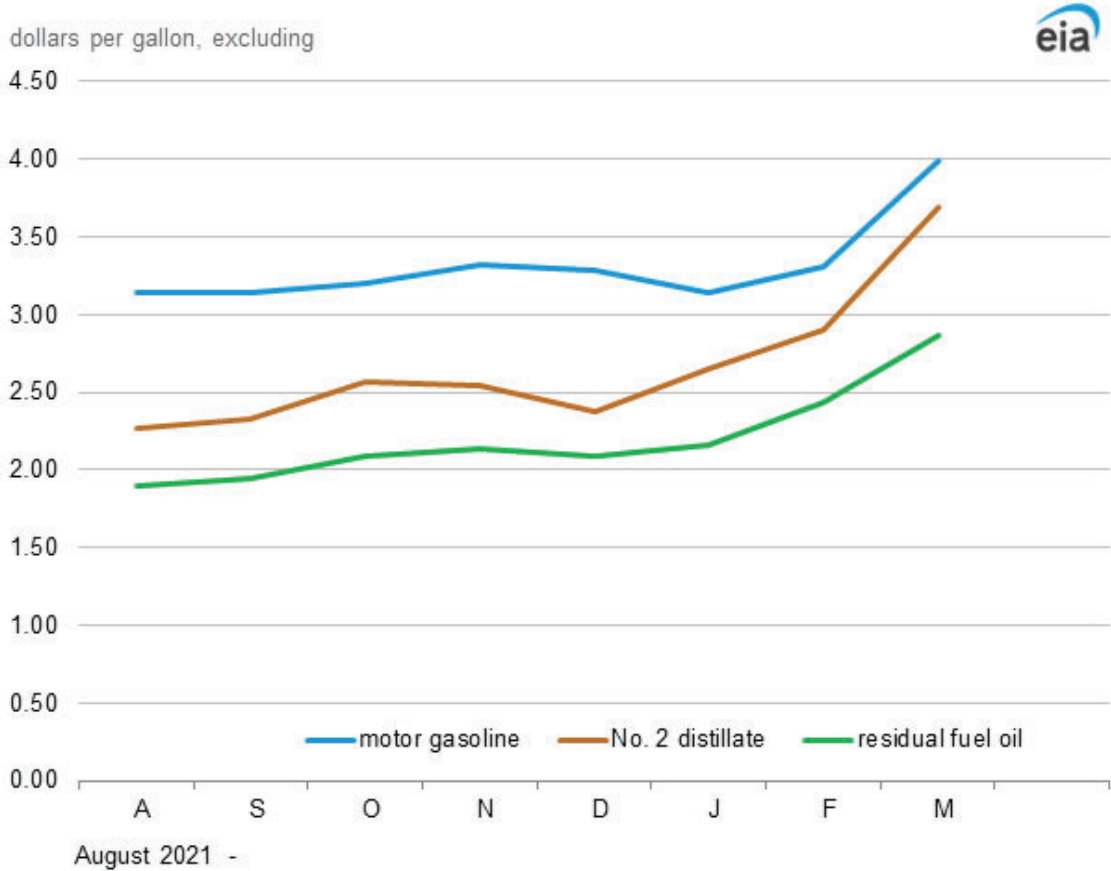
R = Revised data.

[a] Includes No. 4 fuel oil and No. 4 diesel fuel.

Notes: Motor gasoline averages and totals before October 1993 include leaded gasoline. Values shown for the current month are preliminary. Values shown for previous months may be revised. Data through 2021 are final.

Data source: U.S. Energy Information Administration Form EIA-782A, Refiners'/Gas Plant Operators' Monthly Petroleum Product Sales Report.

Figure 2. U.S. refiner retail petroleum product prices



Data source: U.S. Energy Information Administration, Form EIA-782A, Refiners'/Gas Plant Operators' Monthly Petroleum Sales Report.

**Table 3. U.S. refiner volumes of petroleum products to end users**

million gallons per day

Year month	Motor gasoline	Aviation gasoline	Kerosene type jet fuel	Propane (consumer grade)	Kerosene	No. 2 distillate				Residual fuel oil	
						No. 1 distillate	No. 2 diesel fuel	No. 2 fuel oil	Average		No. 4 fuel[a]
1994	55.00	0.20	45.20	2.20	0.40	0.40	21.30	3.40	24.60	0.80	13.50
1995	55.90	0.20	45.70	3.20	0.60	0.30	21.60	3.30	24.90	0.50	11.60
1996	57.50	0.20	48.70	3.10	0.40	0.30	21.90	3.10	25.00	0.40	12.90
1997	61.10	0.20	49.70	3.20	0.30	0.40	22.00	3.00	25.00	0.30	13.40
1998	63.30	0.20	48.90	3.10	0.40	0.40	21.10	3.20	24.30	0.30	14.40
1999	62.00	0.10	47.00	3.60	0.20	0.30	21.10	3.00	24.10	0.30	13.90
2000	60.90	0.20	49.30	2.90	0.20	0.30	22.60	2.80	25.40	0.30	13.10
2001	62.00	0.10	49.70	3.60	0.20	0.30	22.90	3.00	26.00	0.40	14.80
2002	63.60	0.10	49.10	2.60	0.10	0.30	19.60	3.00	22.60	0.40	10.40
2003	63.80	0.10	44.00	2.50	0.10	0.30	16.70	2.70	19.50	0.30	10.70
2004	58.40	0.10	46.40	2.70	0.50	0.20	16.90	2.40	19.30	0.30	10.20
2005	59.00	0.10	45.20	3.20	0.10	0.30	17.00	2.10	19.10	W	10.40
2006	60.00	0.10	42.10	2.70	0.10	0.20	24.20	1.20	25.40	W	10.40
2007	57.70	0.10	40.10	3.30	0.10	0.20	23.60	0.80	24.30	W	10.90
2008	55.10	0.10	39.90	2.70	NA	0.10	19.90	0.90	20.80	W	8.40
2009	49.80	0.20	38.00	3.70	NA	0.10	16.90	0.90	17.80	W	8.50
2010	44.70	0.10	34.80	3.90	0.00	0.10	15.30	0.40	15.80	W	7.60
2011	39.00	0.10	33.30	4.50	0.00	0.10	13.40	0.40	13.80	W	6.40
2012	29.70	0.10	32.50	5.60	0.00	0.10	12.20	0.30	12.50	W	5.50
2013	24.70	0.00	31.40	5.30	0.00	0.10	11.50	0.20	11.70	W	5.20
2014	21.60	0.00	31.30	4.90	W	0.10	11.90	0.10	11.90	W	4.60
2015	25.50	W	33.40	5.60	W	0.10	12.60	0.10	12.70	W	4.00
2016	25.60	W	31.20	6.10	W	0.10	12.60	0.10	12.70	W	4.20
2018	24.30	W	31.30	3.60	0.00	0.10	12.60	0.10	12.70	-	3.50
2019	24.20	W	31.50	3.00	W	0.10	11.90	0.10	12.00	-	2.60
<b>2020</b>											
January	22.80	W	31.20	3.70	W	0.20	11.00	0.20	11.10	-	1.80
February	23.30	W	30.00	4.10	W	0.10	11.20	0.10	11.30	-	2.40
March	18.50	W	27.20	4.30	W	0.10	10.50	0.10	10.60	-	2.00
April	12.40	W	13.80	2.80	W	0.10	10.50	0.10	10.60	-	2.30
May	15.60	W	14.20	3.00	W	0.10	9.20	0.10	9.30	-	1.60
June	19.10	W	18.20	2.10	0.00	0.00	9.20	0.10	9.30	-	1.80
July	20.60	0.00	20.20	2.20	0.00	0.10	9.40	0.10	9.60	-	2.00
August	20.60	0.00	21.10	2.40	0.00	W	9.30	0.10	9.40	-	1.70
September	20.50	0.00	20.20	3.40	W	0.10	9.50	0.10	9.50	-	1.90
October	20.70	0.00	20.50	3.00	W	0.10	9.70	0.10	9.90	-	2.90
November	19.00	0.00	22.10	3.70	W	0.20	9.40	0.10	9.50	-	2.00
December	18.70	0.00	24.10	3.50	W	0.10	9.20	0.10	9.20	-	2.30
<b>2020</b>	19.30	0.00	21.90	3.20	W	0.10	9.80	0.10	9.90	-	2.10
<b>2021</b>											
January	18.10	0.00	21.30	3.90	W	0.10	9.30	0.10	9.30	-	2.10
February	18.50	0.00	20.70	4.20	W	0.20	9.30	0.10	9.40	-	2.00
March	20.10	0.00	24.40	3.00	W	0.10	9.70	0.10	9.80	-	2.10
April	20.80	0.00	26.00	3.40	W	0.10	10.00	0.10	10.10	-	2.00
May	12.20	0.00	26.40	3.00	W	0.00	9.00	0.10	9.10	-	1.80
June	4.90	0.00	28.00	3.20	W	0.00	8.80	0.10	8.80	-	2.20
July	4.80	W	28.30	4.60	0.00	0.00	7.90	0.00	8.00	-	1.80
August	4.80	W	31.30	4.20	W	0.10	8.00	0.10	8.00	-	2.00
September	4.70	W	30.80	5.20	0.00	0.10	8.20	0.10	8.30	-	1.80
October	4.60	0.00	29.20	4.40	0.00	0.10	7.90	0.10	8.00	-	2.00
November	4.50	0.00	30.40	2.70	0.00	0.10	7.70	0.10	7.80	-	2.20
December	4.40	W	32.20	3.50	0.00	0.20	8.00	0.10	8.00	-	1.90
<b>2021</b>	10.20	0.00	27.50	3.80	W	0.10	8.60	0.10	8.70	-	2.00
<b>2022</b>											
January	5.30	0.00	29.60	4.20	0.00	0.20	7.90	0.10	8.00	-	2.60
February	5.60	W	R30.70	4.30	0.00	R0.20	8.20	0.10	8.30	-	R2.50
March	5.50	0.00	30.20	3.70	0.00	0.10	8.30	0.10	8.40	-	2.40

NA = Not available.

- = No data reported.

W = Withheld to avoid disclosure of individual company data.

R = Revised data.

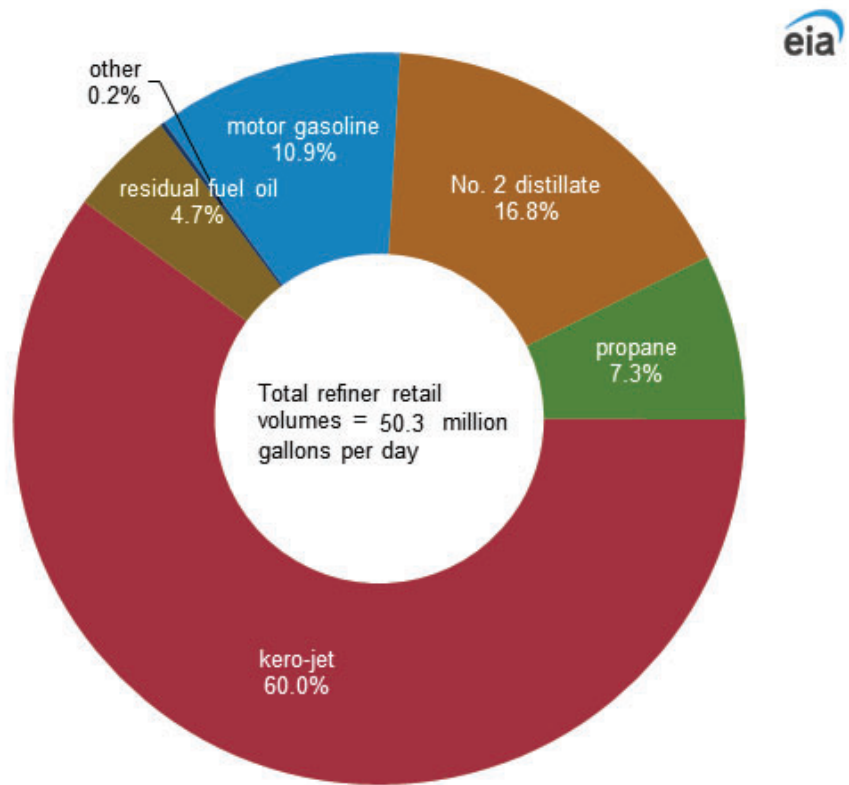
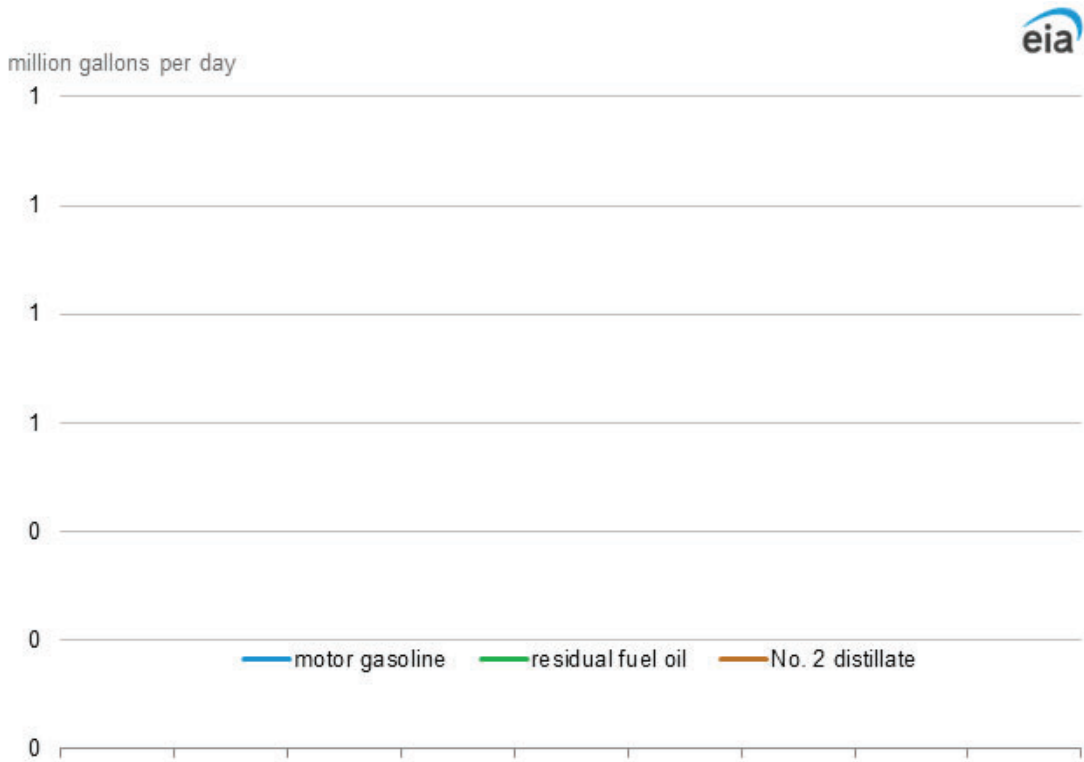
[a] Includes No. 4 fuel oil and No. 4 diesel fuel.

Notes: Motor gasoline averages and totals before October 1993 include leaded gasoline. Values shown for the current month are preliminary. Values shown for previous months are revised. Data through 2021 are final. Totals may not equal the sum of the components because of rounding.

Data source: U.S. Energy Information Administration Form EIA-782A, Refiners'/Gas Plant Operators' Monthly Petroleum Product Sales Report.



Figure 3. U.S. refiner retail petroleum product volumes



Data source: U.S. Energy Information Administration, Form EIA-782A, *Refiners/Gas Plant Operators Monthly Petroleum Product Sales Report*.

**Table 4. U.S. refiner prices of petroleum products for resale**

dollars per gallon, excluding taxes

Year month	Motor gasoline	Aviation gasoline	Kerosene type jet fuel	Propane (consumer grade)	Kerosene	No. 2 distillate					Residual fuel oil	
						No. 1 distillate	No. 2 diesel fuel	No. 2 fuel oil	Average	No. 4 fuel[a]		
1994	0.59	0.93	0.53	0.32	0.61	0.61	0.52	0.50	0.52	0.46	0.31	
1995	0.62	0.97	0.53	0.34	0.58	0.62	0.53	0.51	0.53	0.46	0.36	
1996	0.71	1.05	0.64	0.46	0.71	0.75	0.65	0.63	0.65	0.60	0.42	
1997	0.70	1.06	0.61	0.41	0.65	0.72	0.60	0.59	0.60	0.55	0.38	
1998	0.52	0.91	0.45	0.28	0.46	0.51	0.44	0.42	0.43	0.38	0.28	
1999	0.64	1.00	0.53	0.34	0.55	0.63	0.54	0.49	0.53	0.43	0.35	
2000	0.96	1.33	0.88	0.59	0.96	1.01	0.89	0.88	0.89	0.77	0.56	
2001	0.88	1.25	0.76	0.54	0.82	0.88	0.78	0.75	0.77	0.69	0.47	
2002	0.82	1.14	0.71	0.43	0.75	0.80	0.72	0.69	0.71	0.66	0.53	
2003	1.00	1.28	0.87	0.60	0.95	1.03	0.88	0.88	0.88	0.79	0.66	
2004	1.28	1.62	1.20	0.75	1.27	1.28	1.18	1.12	1.17	1.03	0.68	
2005	1.67	2.07	1.72	0.93	1.75	1.80	1.73	1.62	1.72	1.37	0.97	
2006	1.96	2.49	1.96	1.03	2.00	2.04	2.01	1.83	1.99	1.39	1.13	
2007	2.18	2.75	2.17	1.19	2.24	2.43	2.20	2.07	2.19	1.55	1.35	
2008	2.58	3.34	3.02	1.43	2.85	2.71	2.99	2.74	2.97	2.15	1.86	
2009	1.76	2.48	1.71	0.92	1.84	2.05	1.71	1.65	1.70	1.56	1.34	
2010	2.16	2.87	2.18	1.21	2.29	2.57	2.21	2.14	2.20	W	1.69	
2011	2.86	3.73	3.01	1.46	3.06	3.22	3.03	2.90	3.02	2.80	2.33	
2012	2.92	3.91	3.08	1.03	3.16	3.34	3.10	3.03	3.10	W	2.45	
2013	2.81	3.86	2.95	1.04	3.08	3.34	3.02	2.96	3.02	2.76	2.27	
2014	2.61	3.68	2.76	1.16	2.88	3.21	2.81	2.74	2.80	2.33	2.04	
2015	1.72	2.76	1.59	0.55	1.73	1.95	1.66	1.56	1.66	1.21	0.99	
2016	1.45	2.40	1.29	0.52	1.38	1.58	1.37	1.23	1.37	0.95	0.74	
2017	1.68	2.68	1.60	0.80	1.73	2.09	1.69	1.60	1.68	W	1.11	
2018	1.98	3.00	2.07	0.87	2.16	2.38	2.13	2.00	2.12	W	1.46	
2019	1.85	2.84	1.92	0.62	2.01	2.29	1.95	1.89	1.95	W	1.42	
<b>2020</b>												
January	1.74	2.75	1.89	0.55	2.00	2.17	1.85	1.86	1.85	W	1.67	
February	1.66	2.69	1.61	0.53	1.80	1.96	1.67	1.62	1.66	W	1.54	
March	1.12	2.27	1.18	0.41	1.11	1.57	1.27	1.23	1.27	W	1.12	
April	0.64	1.59	0.70	0.37	0.83	1.19	0.90	0.87	0.90	W	0.73	
May	1.04	1.86	0.69	0.45	0.84	1.11	0.87	0.79	0.87	W	0.77	
June	1.31	2.13	1.00	0.51	1.09	1.42	1.13	1.00	1.12	W	1.01	
July	1.38	2.25	1.14	0.50	1.17	1.52	1.25	1.15	1.25	W	1.13	
August	1.38	2.21	1.16	0.53	1.25	1.52	1.27	1.17	1.27	W	1.13	
September	1.35	2.24	1.07	0.51	1.21	1.44	1.19	1.09	1.19	W	1.06	
October	1.31	2.21	1.10	0.59	1.29	1.49	1.21	1.08	1.21	W	1.04	
November	1.28	2.12	1.18	0.63	1.32	1.64	1.31	1.15	1.30	W	1.14	
December	1.39	2.28	1.35	0.72	1.58	1.74	1.47	1.34	1.46	W	1.32	
2020	1.33	2.23	1.29	0.53	1.31	1.77	1.28	1.24	1.28	W	1.14	
<b>2021</b>												
January	1.57	2.48	1.45	0.92	1.68	1.79	1.58	1.48	1.57	W	1.43	
February	1.78	2.65	1.59	1.03	1.93	2.04	1.80	1.66	1.79	W	1.51	
March	2.01	2.97	1.72	0.98	1.85	2.24	1.95	1.72	1.94	W	1.68	
April	2.05	3.01	1.68	0.84	1.81	2.13	1.91	1.70	1.90	W	1.68	
May	2.18	3.10	1.79	0.82	1.80	2.36	2.07	1.80	2.06	W	1.73	
June	2.25	3.19	1.87	0.95	1.90	2.44	2.14	1.92	2.14	W	1.78	
July	2.33	3.33	1.94	1.07	1.94	2.46	2.18	1.93	2.17	W	1.81	
August	2.30	3.29	1.92	1.11	1.89	2.44	2.14	1.88	2.14	W	1.77	
September	2.31	3.24	2.00	1.28	2.10	2.47	2.24	2.04	2.23	W	1.84	
October	2.49	3.36	2.28	1.46	2.43	2.79	2.50	2.35	2.49	W	2.06	
November	2.48	3.41	2.28	1.32	2.40	2.68	2.45	2.26	2.44	W	1.92	
December	2.30	3.15	2.14	1.14	2.27	2.58	2.27	2.11	2.26	W	1.86	
2021	2.19	3.13	1.91	1.08	2.06	2.32	2.11	1.87	2.10	W	1.77	
<b>2022</b>												
January	2.42	3.37	2.42	1.24	2.65	2.84	2.55	2.43	2.54	W	2.08	
February	R2.63	3.68	R2.65	R1.37	R2.91	R3.06	R2.83	R2.74	R2.82	W	2.27	
March	3.23	4.08	3.28	1.48	3.61	3.69	3.58	3.47	3.57	W	2.68	

W = Withheld to avoid disclosure of individual company data.

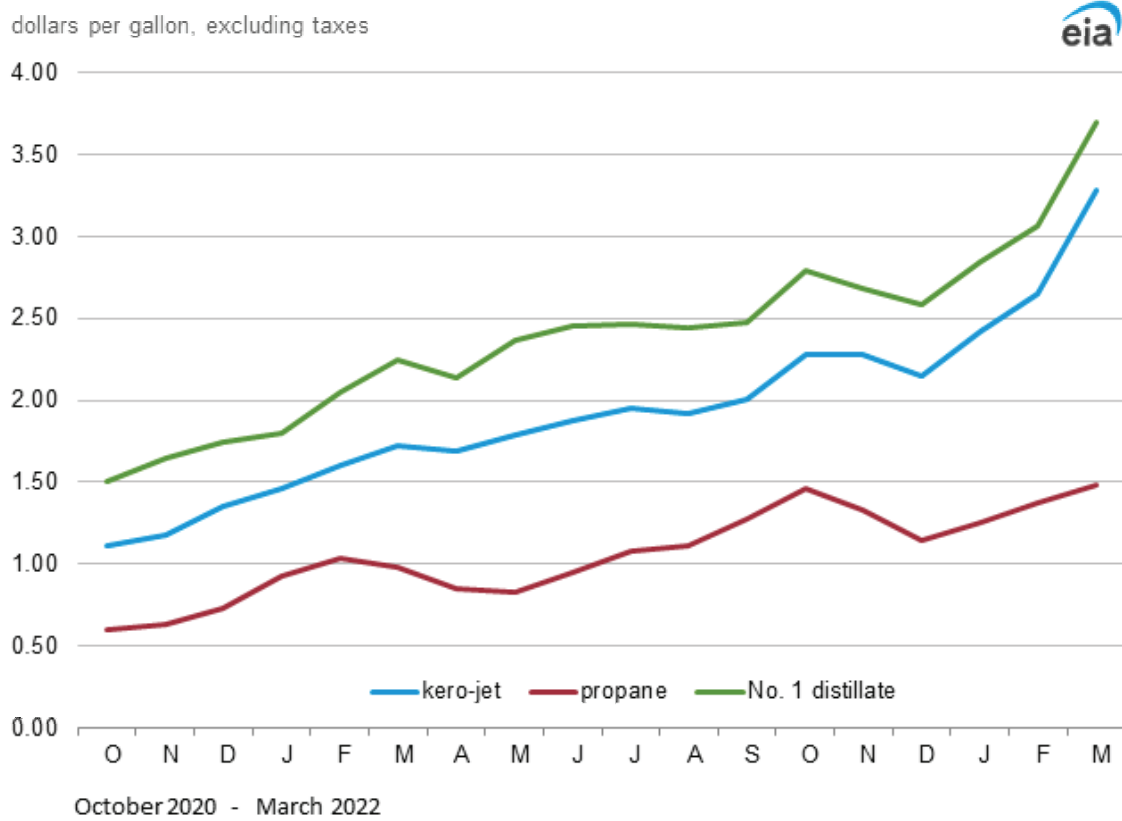
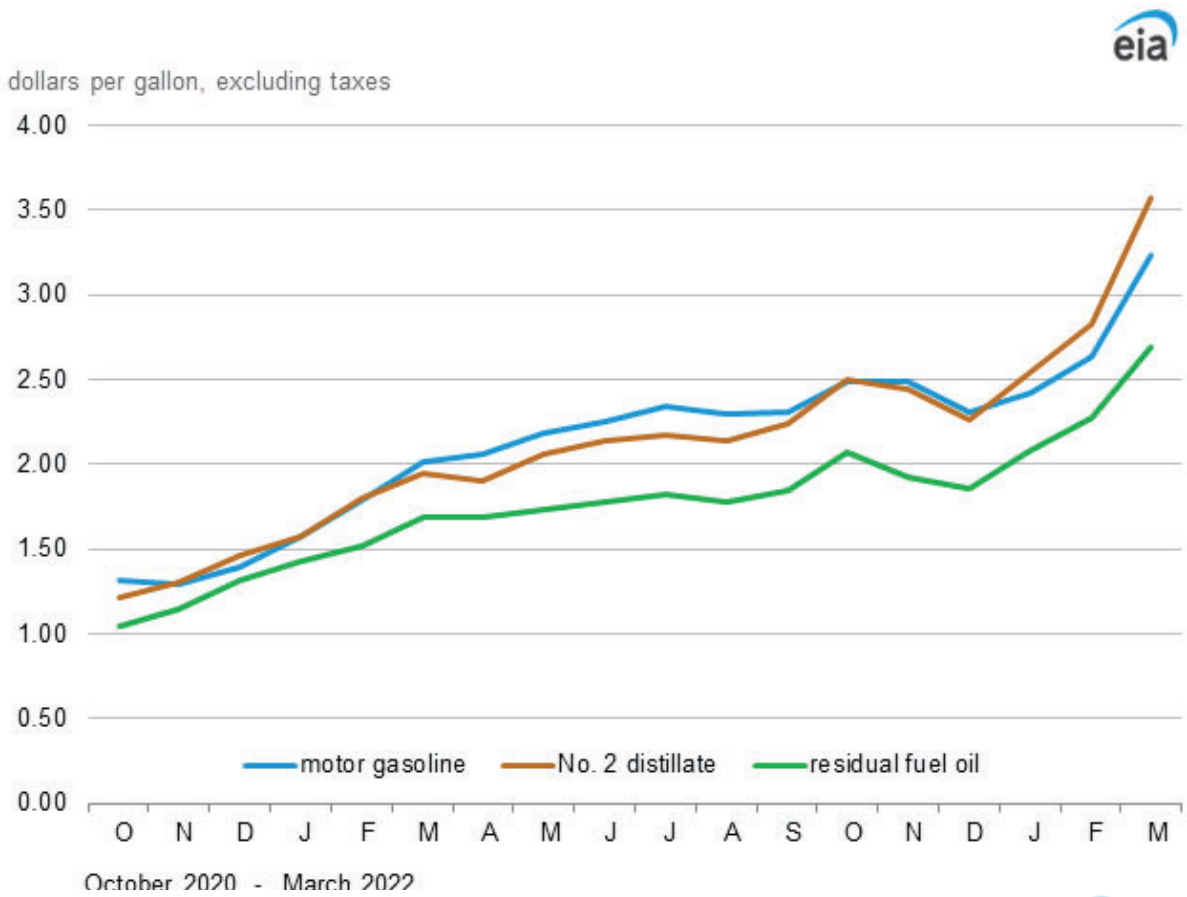
R = Revised data.

[a] Includes No. 4 fuel oil and No. 4 diesel fuel.

Notes: - Motor gasoline averages and totals before October 1993 include leaded gasoline. - Values shown for the current month are preliminary. Values shown for previous months may be revised. Data through 2021 are final.

Data source: U.S. Energy Information Administration Form EIA-782A, Refiners'/Gas Plant Operators' Monthly Petroleum Product Sales Report.

Figure 4. U.S. refiner wholesale petroleum product prices



Data source: U.S. Energy Information Administration, Form EIA-782A, Refiners/Gas Plant Operators' Monthly Petroleum Product Sales Report.

**Table 5. U.S. refiner volumes of petroleum sales for resale**

million gallons per day

Year month	Motor gasoline	Aviation gasoline	Kerosene type jet fuel	Propane (consumer grade)	Kerosene	No. 2 distillate				Residual fuel oil	
						No. 1 distillate	No. 2 diesel fuel	No. 2 fuel oil	Average		No. 4 fuel[a]
1994	276.70	0.70	9.10	28.40	2.50	1.90	72.40	32.90	105.30	0.40	12.80
1995	288.80	0.60	9.90	30.60	2.40	1.70	75.90	31.00	106.90	0.30	13.60
1996	293.60	0.60	11.50	32.90	2.70	1.80	83.70	33.10	116.80	0.30	13.80
1997	292.70	0.60	11.30	32.20	2.50	1.60	88.70	31.20	119.90	0.20	11.50
1998	300.40	0.60	12.20	32.70	2.20	1.40	91.90	27.30	119.20	0.10	15.40
1999	306.90	0.70	15.20	33.60	2.40	1.70	95.50	24.30	119.90	0.20	11.50
2000	304.40	0.60	15.70	34.80	2.30	1.50	98.80	23.30	122.10	0.20	10.50
2001	305.20	0.60	14.30	35.00	2.20	1.40	101.30	25.20	126.40	0.10	10.30
2002	311.80	0.60	12.10	32.90	2.00	1.30	100.80	23.60	124.40	0.10	8.80
2003	311.60	0.50	12.20	36.50	2.30	1.20	108.90	20.90	129.80	0.10	6.70
2004	316.40	0.60	12.70	40.30	2.10	1.30	116.50	19.60	136.10	NA	5.90
2005	321.80	0.50	15.20	35.10	2.00	1.40	118.70	20.60	139.30	NA	4.70
2006	315.60	0.50	15.20	39.40	1.40	1.30	123.20	16.70	139.90	0.30	6.50
2007	319.80	0.50	16.60	41.70	1.40	0.90	135.30	14.50	149.80	0.30	8.20
2008	306.40	0.40	16.50	34.20	1.00	1.00	138.70	14.90	153.60	0.20	9.50
2009	307.40	0.40	15.20	31.80	1.30	1.00	128.00	15.10	143.10	0.10	9.80
2010	312.00	0.40	20.30	28.30	1.40	0.90	135.50	11.50	147.00	W	10.70
2011	296.30	0.40	23.00	28.60	1.20	1.00	134.60	10.70	145.30	0.10	12.20
2012	294.70	0.40	23.50	27.60	1.20	0.80	136.90	10.70	147.60	W	8.80
2013	291.00	0.40	26.40	34.90	1.30	1.00	142.90	7.70	150.60	0.10	9.00
2014	289.20	0.40	27.50	32.90	1.40	1.40	146.30	7.00	153.30	0.10	8.00
2015	298.70	0.40	28.60	31.60	1.20	1.20	146.50	6.70	153.20	0.20	8.10
2016	303.80	0.40	30.30	32.40	1.20	1.00	138.30	8.20	146.50	0.10	8.40
2017	301.50	0.40	38.10	28.90	1.00	1.00	146.50	8.50	155.00	W	7.10
2018	305.40	0.40	40.50	28.40	1.20	1.20	154.50	9.10	163.70	W	7.60
2019	301.90	0.40	41.10	31.40	1.20	1.40	160.20	9.10	169.40	W	7.50
<b>2020</b>											
January	282.80	0.50	40.70	40.40	1.00	2.60	153.30	11.90	165.20	W	6.90
February	290.00	0.40	38.80	34.70	0.70	2.10	150.90	10.40	161.40	W	7.80
March	250.90	0.40	35.40	31.70	0.90	0.90	154.50	9.10	163.70	W	7.90
April	188.10	0.30	13.30	23.60	0.70	0.50	152.60	8.50	161.10	W	8.70
May	231.40	0.40	11.30	19.20	0.80	0.20	153.80	9.30	163.00	W	5.80
June	270.50	0.40	14.70	17.00	0.70	0.10	153.20	6.00	159.20	W	5.70
July	274.40	0.40	18.00	19.00	1.10	0.20	143.40	3.90	147.20	W	4.40
August	277.20	0.40	17.80	18.00	0.80	0.20	144.30	3.40	147.80	W	4.40
September	273.30	0.40	18.70	22.70	0.80	0.40	152.50	6.00	158.50	W	6.00
October	272.10	0.40	18.10	24.30	0.70	1.30	150.70	6.60	157.40	W	5.80
November	260.00	0.30	20.90	25.30	0.90	1.70	143.70	8.40	152.10	W	5.40
December	256.20	0.30	22.50	31.00	1.00	2.20	142.90	10.20	153.00	W	5.20
2020	260.50	0.40	22.50	25.60	0.80	1.00	149.60	7.80	157.40	W	6.10
<b>2021</b>											
January	246.50	0.40	20.80	32.60	0.90	2.00	134.60	9.10	143.70	W	4.90
February	251.00	0.30	20.40	36.80	1.10	3.30	135.20	10.60	145.80	W	4.90
March	271.80	0.40	25.90	24.90	0.40	0.80	147.10	7.90	155.00	W	7.00
April	283.40	0.50	28.50	19.80	0.30	0.40	151.00	5.60	156.60	W	4.90
May	297.70	0.40	27.20	20.00	0.50	0.10	143.80	4.60	148.50	W	5.10
June	312.40	0.50	30.60	19.70	0.50	0.10	157.60	4.10	161.70	W	5.80
July	312.60	0.60	30.70	19.70	0.70	0.10	146.60	2.70	149.40	W	4.10
August	308.70	0.50	29.20	20.80	0.70	0.20	150.30	2.30	152.60	W	4.90
September	304.00	0.50	28.80	23.50	0.90	0.50	154.60	4.10	158.70	W	4.90
October	296.10	0.40	28.20	25.50	1.40	1.00	152.90	5.40	158.30	W	6.00
November	298.20	0.40	27.80	28.10	1.10	2.00	149.60	6.40	156.00	W	5.60
December	292.80	0.40	30.10	29.10	1.00	2.50	150.20	8.50	158.70	W	7.20
2021	289.80	0.40	27.40	25.00	0.80	1.10	147.80	5.90	153.80	W	5.40
<b>2022</b>											
January	265.20	0.30	27.00	37.30	1.20	3.10	142.20	11.00	153.20	W	6.70
February	R286.60	0.30	R28.60	34.90	1.10	R2.30	R148.30	R13.80	R162.10	W	6.80
March	284.80	0.50	28.60	25.00	0.90	1.00	152.80	8.90	161.70	W	6.30

NA = Not available.

W = Withheld to avoid disclosure of individual company data.

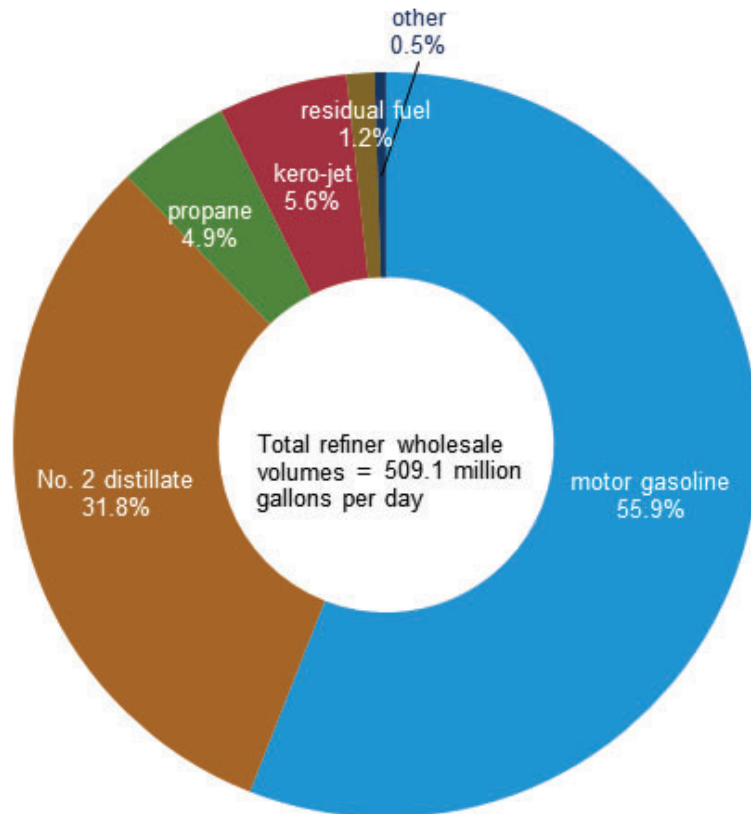
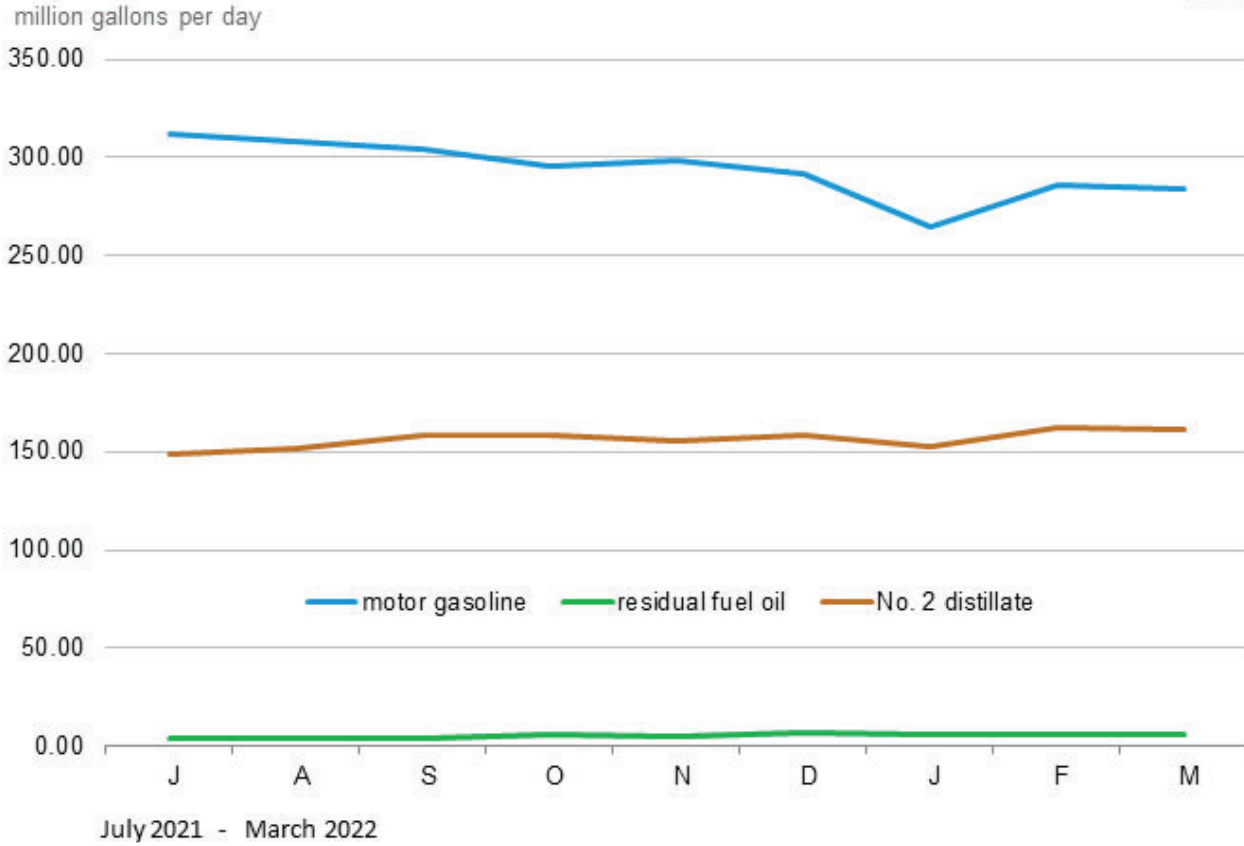
R = Revised data.

[a] Includes No. 4 fuel oil and No. 4 diesel fuel.

Notes: Motor gasoline averages and totals before October 1993 include leaded gasoline. Values shown for the current month are preliminary. Values shown for previous months are revised. Data through 2021 are final. Totals may not equal the sum of the components because of rounding.

Data source: U.S. Energy Information Administration Form EIA-782A, Refiners'/Gas Plant Operators' Monthly Petroleum Product Sales Report.

Figure 5. U.S. refiner wholesale petroleum product volumes



Data source: U.S. Energy Information Administration, Form EIA-782A, Refiners'/Gas Plant Operators' Monthly Petroleum Product Sales Report.

**Table 6. U.S. refiner motor gasoline prices by grade and sales type**  
dollars per gallon excluding taxes

Year month	Regular						Midgrade					
	Sales to end users		Sales for resale				Sales to end users		Sales for resale			
	Through retail outlets	Average[a]	DTW	Rack	Bulk	Average	Through retail outlets	Average[a]	DTW	Rack	Bulk	Average
1994	0.69	0.68	0.64	0.54	0.50	0.56	0.79	0.78	0.70	0.58	NA	0.63
1995	0.72	0.71	0.68	0.57	0.53	0.59	0.81	0.80	0.73	0.61	NA	0.67
1996	0.81	0.80	0.77	0.67	0.62	0.68	0.90	0.89	0.82	0.70	NA	0.75
1997	0.80	0.79	0.76	0.65	0.61	0.67	0.89	0.89	0.82	0.69	0.71	0.74
1998	0.63	0.63	0.59	0.48	0.44	0.49	0.73	0.72	0.65	0.52	NA	0.57
1999	0.74	0.74	0.73	0.60	0.54	0.62	0.83	0.83	0.78	0.63	NA	0.69
2000	1.07	1.07	1.04	0.92	0.87	0.94	1.17	1.16	1.09	0.96	-	1.01
2001	1.00	0.99	0.97	0.84	0.78	0.86	1.10	1.10	1.04	0.88	-	0.94
2002	0.91	0.91	0.88	0.80	0.73	0.80	1.01	1.01	0.96	0.83	-	0.88
2003	1.12	1.12	1.13	0.96	0.88	0.98	1.22	1.21	1.19	1.00	-	1.06
2004	1.40	1.40	1.41	1.25	1.18	1.26	1.50	1.49	1.46	1.29	-	1.34
2005	1.80	1.80	1.76	1.65	1.56	1.65	1.89	1.89	1.82	1.68	-	1.70
2006	2.10	2.09	2.08	1.94	1.86	1.95	2.21	2.21	2.15	1.98	-	2.01
2007	2.31	2.31	2.27	2.16	2.07	2.16	2.44	2.43	2.35	2.22	-	2.24
2008	2.75	2.74	2.70	2.55	2.52	2.57	2.88	2.87	2.77	2.58	-	2.61
2009	1.86	1.85	1.86	1.74	1.66	1.74	1.99	1.99	1.95	1.76	-	1.78
2010	2.27	2.27	2.26	2.14	2.07	2.14	2.41	2.41	2.35	2.16	-	2.18
2011	3.02	3.02	2.96	2.84	2.76	2.84	3.16	3.16	3.05	2.88	-	2.89
2012	3.13	3.11	3.08	2.89	2.83	2.90	3.29	3.29	3.19	2.90	-	2.92
2013	3.02	3.01	2.90	2.76	2.74	2.77	3.20	3.19	3.03	2.86	-	2.87
2014	2.83	2.81	2.76	2.57	2.52	2.58	3.03	3.03	2.90	2.71	-	2.73
2015	1.93	1.93	2.10	1.65	1.60	1.68	2.22	2.22	2.25	1.82	-	1.87
2016	1.66	1.66	1.70	1.39	1.35	1.41	1.93	1.93	1.83	1.55	-	1.58
2017	1.90	1.90	1.95	1.62	1.62	1.64	2.20	2.20	2.09	1.79	-	1.82
2018	2.22	2.22	2.35	1.90	1.92	1.93	2.56	2.56	2.49	2.09	-	2.14
2019	2.16	2.15	2.37	1.77	1.70	1.81	2.54	2.54	2.54	1.97	-	2.03
<b>2020</b>												
January	2.06	2.06	2.21	1.66	1.62	1.69	2.44	2.44	2.43	1.86	-	1.91
February	1.97	1.96	2.18	1.58	1.53	1.62	2.36	2.36	2.39	1.78	-	1.84
March	1.76	1.76	1.81	1.02	1.07	1.07	2.21	2.20	1.98	1.21	-	1.27
April	1.38	1.38	1.23	0.56	0.55	0.59	1.84	1.82	1.43	0.77	-	0.82
May	1.50	1.50	1.43	0.98	0.78	1.00	1.86	1.86	1.66	1.17	-	1.20
June	1.67	1.67	1.70	1.24	1.07	1.26	2.03	2.03	1.90	1.43	-	1.46
July	1.70	1.70	1.77	1.30	1.19	1.33	2.09	2.08	1.98	1.49	-	1.53
August	1.71	1.71	1.82	1.31	1.19	1.33	2.11	2.10	2.04	1.50	-	1.54
September	1.70	1.69	1.79	1.27	1.19	1.30	2.11	2.10	2.00	1.46	-	1.50
October	1.66	1.66	1.74	1.23	1.19	1.26	2.08	2.08	1.98	1.41	-	1.46
November	1.63	1.62	1.74	1.21	1.13	1.24	2.04	2.04	1.93	1.38	-	1.44
December	1.72	1.72	1.79	1.32	1.29	1.35	2.11	2.11	1.99	1.49	-	1.54
<b>2020</b>	1.73	1.73	1.80	1.25	1.19	1.28	2.12	2.12	2.01	1.43	-	1.48
<b>2021</b>												
January	1.88	1.88	1.97	1.50	1.50	1.53	2.27	2.27	2.18	1.67	-	1.72
February	2.10	2.10	2.18	1.71	1.66	1.73	2.48	2.48	2.38	1.89	-	1.93
March	2.34	2.34	2.46	1.93	1.88	1.96	2.74	2.74	2.66	2.14	-	2.18
April	2.39	2.38	2.55	1.97	1.93	2.00	2.80	2.79	2.78	2.17	-	2.23
May	2.56	2.56	2.70	2.09	2.07	2.12	2.98	2.97	2.89	2.30	-	2.35
June	2.88	2.86	2.76	2.16	2.09	2.19	3.19	3.17	2.96	2.39	-	2.44
July	2.98	2.96	2.84	2.24	2.20	2.28	3.31	3.29	3.04	2.49	-	2.54
August	3.02	3.00	2.87	2.20	2.20	2.24	3.36	3.34	3.07	2.44	-	2.50
September	3.02	3.00	2.82	2.22	2.14	2.25	3.38	3.36	3.01	2.44	-	2.50
October	3.08	3.06	3.00	2.41	2.36	2.44	3.45	3.43	3.17	2.59	-	2.65
November	3.20	3.17	3.11	2.39	2.30	2.43	3.60	3.58	3.26	2.56	-	2.64
December	3.16	3.13	2.99	2.21	2.13	2.25	3.58	3.55	3.10	2.36	-	2.44
<b>2021</b>	2.43	2.43	2.72	2.10	2.07	2.14	2.90	2.89	2.90	2.31	-	2.36
<b>2022</b>												
January	3.02	3.00	3.04	2.33	2.32	2.37	3.46	3.45	3.25	2.50	-	2.58
February	R3.19	R3.17	R3.17	R2.55	R2.64	R2.59	R3.60	R3.58	R3.40	R2.70	-	R2.79
March	3.88	3.85	NA	3.13	3.06	3.18	4.32	4.30	4.21	3.31	-	3.40

See footnotes at end of table.

**Table 6. U.S. refiner motor gasoline prices by grade and sales type (cont.)**

dollars per gallon excluding taxes

Year month	Premium						All grades					
	Sales to end users		Sales for resale				Sales to end users		Sales for resale			
	Through retail outlets	Average[a]	DTW	Rack	Bulk	Average	Through retail outlets	Average[a]	DTW	Rack	Bulk	Average
1994	0.87	0.86	0.78	0.64	0.55	0.69	0.74	0.73	0.69	0.56	0.50	0.59
1995	0.89	0.89	0.82	0.67	0.58	0.72	0.77	0.76	0.72	0.59	0.54	0.62
1996	0.97	0.97	0.89	0.76	0.66	0.80	0.85	0.84	0.80	0.69	0.62	0.71
1997	0.97	0.97	0.89	0.74	0.65	0.79	0.84	0.83	0.80	0.67	0.62	0.70
1998	0.81	0.80	0.72	0.57	0.48	0.61	0.67	0.67	0.63	0.50	0.45	0.52
1999	0.91	0.90	0.85	0.68	0.58	0.72	0.78	0.78	0.76	0.62	0.54	0.64
2000	1.25	1.24	1.17	1.01	0.92	1.05	1.11	1.10	1.07	0.94	0.87	0.96
2001	1.18	1.17	1.11	0.93	0.83	0.98	1.03	1.03	1.00	0.86	0.79	0.88
2002	1.09	1.08	1.03	0.89	0.80	0.92	0.94	0.94	0.92	0.81	0.74	0.82
2003	1.31	1.30	1.26	1.06	0.95	1.11	1.16	1.15	1.16	0.97	0.89	1.00
2004	1.60	1.59	1.55	1.36	1.27	1.40	1.43	1.43	1.44	1.27	1.18	1.28
2005	2.00	1.99	1.90	1.76	1.69	1.78	1.83	1.82	1.79	1.66	1.57	1.67
2006	2.32	2.32	2.23	2.09	1.98	2.11	2.13	2.12	2.11	1.95	1.87	1.96
2007	2.55	2.55	2.46	2.33	2.20	2.35	2.34	2.34	2.31	2.18	2.08	2.18
2008	2.97	2.96	2.84	2.71	2.68	2.74	2.77	2.77	2.72	2.57	2.53	2.58
2009	2.12	2.12	2.05	1.94	1.81	1.95	1.89	1.88	1.89	1.76	1.67	1.76
2010	2.54	2.53	2.44	2.33	2.18	2.34	2.30	2.30	2.29	2.16	2.07	2.16
2011	3.29	3.28	3.13	3.04	2.87	3.04	3.05	3.05	2.99	2.86	2.76	2.86
2012	3.41	3.40	3.27	3.14	3.10	3.16	3.16	3.15	3.11	2.91	2.86	2.92
2013	3.32	3.30	3.10	3.07	3.01	3.07	3.06	3.04	2.94	2.80	2.77	2.81
2014	3.15	3.13	2.94	2.87	2.78	2.88	2.87	2.85	2.80	2.60	2.54	2.61
2015	2.39	2.38	2.31	2.03	1.84	2.06	2.00	2.00	2.14	1.69	1.62	1.72
2016	2.13	2.13	1.93	1.75	1.53	1.76	1.73	1.73	1.75	1.43	1.37	1.45
2017	2.41	2.41	2.20	1.97	1.82	1.99	1.97	1.97	2.01	1.66	1.64	1.68
2018	2.79	2.78	2.60	2.25	2.10	2.29	2.30	2.30	2.41	1.94	1.94	1.98
2019	2.78	2.77	2.65	2.14	1.96	2.20	2.25	2.24	2.43	1.81	1.73	1.85
<b>2020</b>												
January	2.69	2.68	2.51	2.02	1.88	2.08	2.15	2.15	2.27	1.70	1.66	1.74
February	2.62	2.60	2.48	1.95	1.81	2.01	2.06	2.06	2.24	1.62	1.56	1.66
March	2.45	2.45	2.09	1.40	1.23	1.47	1.86	1.86	1.87	1.07	1.10	1.12
April	2.09	2.08	1.50	0.89	0.68	0.94	1.49	1.49	1.29	0.60	0.57	0.64
May	2.11	2.11	1.73	1.32	1.02	1.35	1.60	1.59	1.50	1.02	0.81	1.04
June	2.27	2.27	1.99	1.58	1.27	1.61	1.77	1.76	1.77	1.28	1.11	1.31
July	2.33	2.33	2.08	1.65	1.33	1.69	1.80	1.80	1.84	1.35	1.22	1.38
August	2.35	2.35	2.14	1.65	1.34	1.70	1.81	1.81	1.90	1.35	1.21	1.38
September	2.35	2.35	2.10	1.60	1.30	1.65	1.80	1.80	1.87	1.32	1.21	1.35
October	2.33	2.33	2.05	1.55	1.24	1.59	1.77	1.77	1.82	1.27	1.20	1.31
November	2.30	2.30	2.05	1.52	1.18	1.56	1.73	1.73	1.82	1.25	1.14	1.28
December	2.37	2.37	2.09	1.63	1.39	1.67	1.83	1.82	1.86	1.36	1.31	1.39
<b>2020</b>	2.37	2.36	2.09	1.58	1.31	1.63	1.83	1.82	1.87	1.29	1.21	1.33
<b>2021</b>												
January	2.53	2.53	2.29	1.80	1.55	1.85	1.98	1.98	2.05	1.54	1.51	1.57
February	2.74	2.74	2.50	2.02	1.80	2.07	2.20	2.20	2.26	1.75	1.69	1.78
March	2.99	2.99	2.78	2.27	2.05	2.33	2.44	2.44	2.54	1.97	1.91	2.01
April	3.05	3.05	2.89	2.32	2.09	2.37	2.49	2.49	2.64	2.01	1.96	2.05
May	3.23	3.23	3.03	2.45	2.20	2.51	2.68	2.68	2.78	2.13	2.10	2.18
June	3.41	3.40	3.11	2.53	2.28	2.59	3.01	3.00	2.84	2.21	2.12	2.25
July	3.53	3.52	3.19	2.63	2.37	2.69	3.12	3.10	2.92	2.29	2.23	2.33
August	3.58	3.57	3.20	2.59	2.42	2.66	3.16	3.14	2.95	2.25	2.23	2.30
September	3.56	3.55	3.15	2.58	2.32	2.64	3.16	3.14	2.90	2.26	2.17	2.31
October	3.63	3.62	3.33	2.75	2.51	2.82	3.22	3.20	3.07	2.45	2.38	2.49
November	3.78	3.77	3.44	2.75	2.36	2.82	3.34	3.31	3.19	2.43	2.31	2.48
December	3.76	3.75	3.30	2.55	2.26	2.63	3.31	3.28	3.06	2.25	2.15	2.30
<b>2021</b>	3.16	3.16	3.04	2.45	2.17	2.51	2.57	2.56	2.80	2.15	2.09	2.19
<b>2022</b>												
January	3.70	3.69	3.35	2.67	2.44	2.74	3.16	3.14	3.11	2.37	2.35	2.42
February	R3.85	R3.84	R3.52	R2.90	R2.75	R2.97	R3.33	R3.31	R3.26	2.59	R2.67	R2.63
March	4.57	4.56	4.36	3.53	3.36	3.63	4.01	3.99	4.07	3.17	3.11	3.23

NA = Not available.

- = No data reported.

R = Revised data.

[a] Includes sales through retail outlets as well as all direct sales to end users that were not made through company-operated retail outlets, e.g., sales to agricultural customers, commercial sales, and industrial sales.

Notes: - Motor gasoline averages and totals prior to October 1993 include leaded gasoline. Includes sales through retail outlets as well as all direct sales to end users that were not made through company-operated retail outlets, e.g., sales to agricultural customers, commercial sales, and industrial sales. - Data for the 4th quarter of 1993 were derived from two separate survey systems. The DTW, Rack, and Bulk components were derived from the revised EIA-782 survey system, while the End-Use and Average Resale categories were derived from the predecessor EIA-782 survey system. Therefore, the DTW, Rack, and Bulk components are not consistent with the Average Resale category. Beginning January 1994, all data are from the revised EIA-782 survey system and are consistent. - Values shown for the current month are preliminary. Values shown for previous months may be revised. Data through 2021 are final.

Data source: U.S. Energy Information Administration Form EIA-782A, Refiners'/Gas Plant Operators' Monthly Petroleum Product Sales Report.

**Table 7. U.S. refiner motor gasoline volumes by grade and sales type**

million gallons per day

Year month	Regular						Midgrade					
	Sales to end users		Sales for resale				Sales to end users		Sales for resale			
	Through retail outlets	Total[a]	DTW	Rack	Bulk	Total	Through retail outlets	Total[a]	DTW	Rack	Bulk	Total
1994	34.30	35.90	47.70	120.30	24.30	192.30	8.50	8.70	12.80	15.70	0.20	28.70
1995	34.30	35.90	43.80	126.20	31.80	201.80	9.60	9.80	13.30	17.20	0.10	30.60
1996	37.20	38.90	46.50	131.90	35.20	213.60	9.50	9.80	12.90	16.60	NA	29.50
1997	40.50	42.40	46.20	135.70	33.90	215.80	9.70	10.00	12.10	16.30	NA	28.40
1998	41.70	43.20	44.40	138.90	37.10	220.30	10.10	10.30	11.10	16.30	NA	27.40
1999	41.60	43.00	45.60	147.50	34.50	227.60	9.90	10.10	10.50	16.10	NA	26.60
2000	43.60	45.00	47.50	159.30	32.40	239.30	8.60	8.70	8.80	14.20	-	23.00
2001	45.00	46.30	47.20	163.20	33.00	243.50	8.30	8.40	7.80	13.30	-	21.10
2002	46.20	47.40	46.90	163.00	39.20	249.20	8.30	8.50	7.40	13.40	-	20.80
2003	47.30	48.60	43.50	171.40	40.10	255.00	7.80	7.90	5.50	13.10	-	18.60
2004	44.50	45.80	41.10	182.10	42.20	265.40	6.40	6.50	4.40	12.70	-	17.00
2005	46.40	47.50	37.50	189.80	45.80	273.20	5.90	6.00	3.20	13.50	-	16.70
2006	48.20	49.40	34.80	196.00	40.80	271.70	5.50	5.50	2.40	11.70	-	14.10
2007	47.00	47.80	34.00	195.70	46.80	276.60	5.00	5.00	2.00	11.70	-	13.70
2008	45.60	46.60	32.50	192.70	43.70	268.80	4.10	4.20	1.50	11.00	-	12.50
2009	40.50	42.20	32.40	196.80	39.30	268.50	3.50	3.50	1.30	10.20	-	11.50
2010	36.60	38.10	29.00	202.20	41.40	272.50	3.00	3.10	0.90	9.90	-	10.80
2011	32.10	33.50	24.90	204.90	30.50	260.20	2.50	2.50	0.70	8.50	-	9.20
2012	23.60	25.20	22.40	209.30	25.80	257.50	1.90	1.90	0.60	8.30	-	8.90
2013	19.30	20.90	22.70	209.20	22.30	254.20	1.60	1.60	0.60	6.70	-	7.20
2014	16.70	18.20	18.90	216.90	18.90	254.80	1.40	1.40	0.40	3.10	-	3.50
2015	20.80	21.10	18.00	224.20	19.60	261.80	1.70	1.80	0.30	2.70	-	3.10
2016	20.80	21.00	17.90	228.00	19.00	264.90	1.80	1.80	0.30	2.50	-	2.80
2017	20.00	20.20	17.20	230.50	15.60	263.40	1.70	1.70	0.30	2.10	-	2.40
2018	19.90	20.10	17.00	232.60	18.10	267.70	1.60	1.70	0.20	1.80	-	2.10
2019	19.80	20.10	16.70	234.20	13.10	264.00	1.60	1.60	0.20	1.60	-	1.80
<b>2020</b>												
January	18.60	19.00	15.80	219.50	11.80	247.20	1.50	1.50	0.10	1.30	-	1.50
February	19.00	19.40	16.40	225.90	11.10	253.40	1.50	1.50	0.20	1.30	-	1.50
March	15.20	15.30	13.00	196.20	9.30	218.60	1.20	1.30	0.10	1.30	-	1.40
April	10.00	10.10	8.90	148.90	5.40	163.20	0.90	0.90	0.10	1.00	-	1.10
May	12.50	12.70	11.60	179.70	8.40	199.70	1.10	1.10	0.10	1.30	-	1.40
June	15.40	15.50	13.20	211.00	8.30	232.40	1.30	1.40	0.10	1.50	-	1.60
July	16.60	16.70	13.60	216.50	5.60	235.60	1.40	1.50	0.10	1.60	-	1.70
August	16.60	16.80	14.00	217.30	6.60	237.80	1.50	1.50	0.10	1.50	-	1.70
September	16.50	16.60	13.80	214.30	6.00	234.00	1.50	1.50	0.10	1.40	-	1.50
October	16.70	16.80	13.70	214.20	5.60	233.40	1.50	1.50	0.10	1.30	-	1.40
November	15.30	15.50	12.70	203.00	7.10	222.80	1.40	1.40	0.10	1.20	-	1.30
December	15.10	15.20	12.00	203.80	5.10	221.00	1.30	1.40	0.10	1.10	-	1.30
<b>2020</b>	15.60	15.80	13.20	204.20	7.50	224.90	1.30	1.40	0.10	1.30	-	1.40
<b>2021</b>												
January	14.60	14.70	11.70	195.70	4.80	212.30	1.30	1.30	0.10	1.00	-	1.20
February	14.90	15.10	12.40	197.40	6.60	216.40	1.30	1.40	0.10	1.10	-	1.20
March	16.30	16.40	13.30	216.30	5.90	235.60	1.40	1.40	0.10	1.20	-	1.30
April	16.90	17.00	14.00	223.60	6.30	243.80	1.50	1.50	0.10	1.30	-	1.40
May	9.60	9.70	15.20	233.20	7.40	255.80	0.90	1.00	0.10	1.50	-	1.60
June	3.40	3.50	16.60	244.80	8.20	269.60	0.50	0.50	0.10	1.50	-	1.70
July	3.30	3.50	16.70	245.30	7.70	269.70	0.50	0.50	0.20	1.60	-	1.70
August	3.30	3.40	16.10	244.70	6.00	266.80	0.50	0.50	0.10	1.50	-	1.70
September	3.20	3.40	16.00	239.70	7.10	262.70	0.50	0.50	0.10	1.30	-	1.50
October	3.20	3.30	15.50	234.80	6.80	257.10	0.40	0.50	0.10	1.20	-	1.30
November	3.20	3.30	15.30	235.60	8.70	259.60	0.40	0.40	0.10	1.10	-	1.30
December	3.10	3.20	15.00	231.90	8.20	255.00	0.40	0.40	0.10	1.10	-	1.20
<b>2021</b>	7.90	8.00	14.80	228.80	7.00	250.60	0.80	0.80	0.10	1.30	-	1.40
<b>2022</b>												
January	3.90	4.10	13.70	211.10	6.00	230.80	0.50	0.50	0.10	1.00	-	1.10
February	4.10	4.30	14.50	229.80	6.00	250.20	0.50	0.50	0.10	1.00	-	1.20
March	4.10	4.30	14.00	232.20	5.10	251.20	0.40	0.50	0.10	1.10	-	1.20

See footnotes at end of table.



**Table 7. U.S. refiner motor gasoline volumes by grade and sales type (cont.)**

million gallons per day

Year month	Premium						All grades					
	Sales to end users		Sales for resale				Sales to end users		Sales for resale			
	Through retail outlets	Total[a]	DTW	Rack	Bulk	Total	Through retail outlets	Total[a]	DTW	Rack	Bulk	Total
1994	10.00	10.30	22.60	29.90	3.20	55.70	52.80	55.00	83.10	165.90	27.70	276.70
1995	9.80	10.20	20.80	31.50	4.20	56.40	53.70	55.90	77.90	174.80	36.00	288.80
1996	8.40	8.80	18.20	28.30	4.10	50.50	55.10	57.50	77.50	176.80	39.30	293.60
1997	8.40	8.80	16.90	27.60	4.00	48.50	58.70	61.10	75.10	179.60	38.00	292.70
1998	9.60	9.90	17.40	30.90	4.30	52.70	61.40	63.30	73.00	186.10	41.40	300.40
1999	8.70	8.90	16.10	31.00	5.70	52.70	60.20	62.00	72.20	194.60	40.20	306.90
2000	6.90	7.10	13.00	24.40	4.70	42.10	59.10	60.90	69.40	197.90	37.10	304.40
2001	7.10	7.30	12.30	24.60	3.70	40.60	60.40	62.00	67.40	201.10	36.70	305.20
2002	7.50	7.80	12.50	25.20	4.10	41.80	62.10	63.60	66.90	201.70	43.30	311.80
2003	7.10	7.30	10.80	23.90	3.30	38.10	62.20	63.80	59.80	208.40	43.40	311.60
2004	5.90	6.10	9.40	22.30	2.30	34.00	56.90	58.40	54.80	217.10	44.50	316.40
2005	5.20	5.40	8.00	20.90	3.00	31.90	57.50	59.00	48.70	224.20	48.90	321.80
2006	4.90	5.10	7.10	20.30	2.40	29.70	58.60	60.00	44.30	228.00	43.20	315.60
2007	4.70	4.80	6.90	20.20	2.40	29.50	56.70	57.70	43.00	227.60	49.20	319.80
2008	4.20	4.30	5.90	17.10	1.90	25.00	53.90	55.10	39.90	220.80	45.70	306.40
2009	4.00	4.10	6.30	19.10	2.10	27.40	48.00	49.80	39.90	226.10	41.40	307.40
2010	3.40	3.50	5.70	20.90	2.10	28.70	43.10	44.70	35.70	232.90	43.50	312.00
2011	2.90	3.00	4.60	20.30	2.00	26.90	37.50	39.00	30.10	233.70	32.50	296.30
2012	2.50	2.60	4.20	21.60	2.60	28.40	28.00	29.70	27.20	239.20	28.40	294.70
2013	2.20	2.30	4.30	22.70	2.60	29.60	23.00	24.70	27.60	238.60	24.80	291.00
2014	1.90	2.00	4.20	24.40	2.30	30.90	19.90	21.60	23.50	244.50	21.20	289.20
2015	2.60	2.60	4.50	27.30	2.00	33.80	25.10	25.50	22.90	254.20	21.60	298.70
2016	2.70	2.70	5.00	28.80	2.40	36.10	25.30	25.60	23.20	259.30	21.30	303.80
2017	2.50	2.60	4.90	29.00	1.90	35.70	24.20	24.50	22.40	261.60	17.50	301.50
2018	2.40	2.50	4.70	28.80	2.00	35.60	23.90	24.30	22.00	263.30	20.10	305.40
2019	2.50	2.50	4.60	29.70	1.80	36.10	23.80	24.20	21.40	265.60	14.90	301.90
<b>2020</b>												
January	2.30	2.30	4.40	27.90	1.80	34.10	22.40	22.80	20.30	248.80	13.70	282.80
February	2.30	2.40	4.60	29.00	1.50	35.00	22.90	23.30	21.10	256.30	12.60	290.00
March	1.90	1.90	3.70	25.70	1.60	30.90	18.30	18.50	16.80	223.20	10.90	250.90
April	1.40	1.40	2.60	19.70	1.50	23.80	12.20	12.40	11.60	169.70	6.80	188.10
May	1.80	1.80	3.60	25.60	1.20	30.40	15.50	15.60	15.30	206.50	9.60	231.40
June	2.20	2.20	4.10	30.30	2.00	36.40	18.90	19.10	17.40	242.80	10.30	270.50
July	2.30	2.40	4.20	31.70	1.10	37.10	20.40	20.60	17.90	249.70	6.70	274.40
August	2.40	2.40	4.40	32.20	1.00	37.60	20.50	20.60	18.60	251.00	7.60	277.20
September	2.40	2.40	4.40	31.80	1.50	37.70	20.30	20.50	18.20	247.50	7.60	273.30
October	2.40	2.40	4.40	31.00	1.90	37.30	20.50	20.70	18.20	246.50	7.50	272.10
November	2.20	2.20	4.20	29.50	2.30	36.00	18.90	19.00	17.00	233.60	9.40	260.00
December	2.20	2.20	4.00	28.70	1.30	34.00	18.60	18.70	16.10	233.70	6.40	256.20
<b>2020</b>	2.10	2.20	4.00	28.60	1.60	34.20	19.10	19.30	17.40	234.10	9.10	260.50
<b>2021</b>												
January	2.00	2.10	3.90	27.50	1.70	33.10	17.90	18.10	15.70	224.30	6.50	246.50
February	2.00	2.10	4.10	27.70	1.50	33.30	18.30	18.50	16.60	226.20	8.10	251.00
March	2.20	2.20	4.30	29.50	1.10	34.90	19.90	20.10	17.70	247.10	7.00	271.80
April	2.30	2.30	4.50	32.00	1.60	38.10	20.70	20.80	18.60	256.80	7.90	283.40
May	1.60	1.60	4.70	33.80	1.80	40.30	12.10	12.20	20.10	268.40	9.20	297.70
June	0.90	0.90	5.00	34.70	1.50	41.10	4.80	4.90	21.70	281.00	9.70	312.40
July	0.90	0.90	5.00	34.70	1.50	41.20	4.70	4.80	21.80	281.60	9.20	312.60
August	0.90	0.90	4.90	34.30	1.00	40.20	4.70	4.80	21.20	280.50	7.00	308.70
September	0.90	0.90	4.90	33.30	1.70	39.80	4.60	4.70	21.00	274.20	8.80	304.00
October	0.80	0.80	4.70	31.70	1.30	37.70	4.40	4.60	20.40	267.70	8.10	296.10
November	0.80	0.80	4.60	31.00	1.70	37.30	4.40	4.50	20.10	267.70	10.40	298.20
December	0.80	0.80	4.50	30.60	1.40	36.60	4.30	4.40	19.60	263.60	9.60	292.80
<b>2021</b>	1.30	1.30	4.60	31.70	1.50	37.80	10.00	10.20	19.50	261.80	8.50	289.80
<b>2022</b>												
January	0.80	0.80	4.10	27.40	1.70	33.30	5.20	5.30	17.90	239.50	7.70	265.20
February	0.80	0.80	R4.50	29.30	R1.60	R35.30	5.40	5.60	R19.10	R260.10	R7.50	R286.60
March	0.80	0.80	3.90	27.40	1.10	32.40	5.30	5.50	18.00	260.60	6.20	284.80

NA = Not available.

- = No data reported.

R = Revised data.

[a] Includes sales through retail outlets as well as all direct sales to end users that were not made through company-operated retail outlets, e.g., sales to agricultural customers, commercial sales, and industrial sales.

Notes: - Motor gasoline averages and totals prior to October 1993 include leaded gasoline. - Data for the 4th quarter of 1993 were derived from two separate survey systems. The DTW, Rack, and Bulk components were derived from the revised EIA-782 survey system, while the End-Use and Average Resale categories were derived from the predecessor EIA-782 survey system. Therefore, the DTW, Rack, and Bulk components are not consistent with the Average Resale category. Beginning January 1994, all data are from the revised EIA-782 survey system and are consistent. - Values shown for the current month are preliminary. Values shown for previous months are revised. Data through 2021 are final. Totals may not equal the sum of the components due to rounding.

Data source: U.S. Energy Information Administration Form EIA-782A, Refiners'/Gas Plant Operators' Monthly Petroleum Product Sales Report.

**Table 8. U.S. refiner conventional motor gasoline prices by grade and sales type**

dollars per gallon excluding taxes

Year month	Regular						Midgrade					
	Sales to end users		Sales for resale				Sales to end users		Sales for resale			
	Through retail outlets	Average[a]	DTW	Rack	Bulk	Average	Through retail outlets	Average[a]	DTW	Rack	Bulk	Average
1994	0.68	0.68	0.63	0.54	0.50	0.55	0.78	0.77	0.69	NA	NA	0.62
1995	0.71	0.70	0.65	0.57	0.52	0.57	0.80	0.79	0.71	0.61	NA	0.63
1996	0.79	0.79	0.74	0.66	0.60	0.66	0.88	0.87	0.80	0.70	NA	0.72
1997	0.78	0.77	0.71	0.64	0.60	0.64	0.87	0.86	0.78	0.68	W	0.70
1998	0.61	0.60	0.55	0.47	0.43	0.47	0.70	0.70	0.61	0.51	W	0.53
1999	0.71	0.70	0.67	0.59	0.52	0.59	0.80	0.79	0.73	0.62	-	0.65
2000	1.04	1.04	0.99	0.91	0.84	0.90	1.13	1.13	1.05	0.94	-	0.96
2001	0.96	0.95	0.91	0.83	0.76	0.83	1.05	1.05	0.98	0.87	-	0.88
2002	0.89	0.89	0.83	0.79	0.72	0.78	0.98	0.98	0.90	0.82	-	0.83
2003	1.08	1.07	1.04	0.95	0.87	0.94	1.17	1.16	1.10	0.99	-	1.00
2004	1.36	1.36	1.32	1.24	1.17	1.23	1.45	1.45	1.39	1.28	-	1.29
2005	1.78	1.77	1.70	1.64	1.55	1.62	1.86	1.85	1.78	1.67	-	1.68
2006	2.06	2.06	2.05	1.92	1.86	1.91	2.16	2.16	2.13	1.97	-	1.98
2007	2.29	2.28	2.24	2.15	2.06	2.13	2.39	2.39	2.29	2.22	-	2.22
2008	2.71	2.71	2.69	2.56	2.51	2.55	2.82	2.82	2.73	2.58	-	2.58
2009	1.82	1.82	1.81	1.73	1.65	1.72	1.93	1.93	1.87	1.75	-	1.75
2010	2.24	2.23	2.24	2.13	2.06	2.12	2.36	2.36	2.33	2.16	-	2.16
2011	2.99	2.98	2.91	2.83	2.75	2.82	3.10	3.10	3.03	2.86	-	2.87
2012	3.07	3.06	2.99	2.86	2.81	2.86	3.20	3.20	3.11	2.88	-	2.89
2013	2.97	2.95	2.79	2.74	2.72	2.74	3.11	3.11	2.94	2.85	-	2.85
2014	2.77	2.75	2.70	2.55	2.50	2.55	2.93	2.93	2.85	2.70	-	2.71
2015	1.83	1.83	1.85	1.62	1.57	1.62	2.03	2.03	2.09	1.79	-	1.80
2016	1.59	1.59	1.49	1.37	1.33	1.37	1.81	1.81	1.68	1.54	-	1.54
2017	1.82	1.82	1.78	1.60	1.60	1.61	2.08	2.08	1.95	1.78	-	1.79
2018	2.12	2.12	2.16	1.88	1.90	1.89	2.40	2.39	2.37	2.08	-	2.10
2019	2.02	2.01	2.06	1.74	1.65	1.74	2.29	2.29	2.29	1.94	-	1.96
<b>2020</b>												
January	1.95	1.94	1.88	1.62	W	1.63	2.23	2.22	W	W	-	1.84
February	1.83	1.83	1.87	1.55	W	1.55	2.12	2.11	W	1.74	-	1.76
March	1.61	1.60	1.51	1.00	W	1.01	1.92	1.91	W	1.19	-	1.20
April	1.22	1.22	0.93	0.53	W	0.53	1.55	1.54	1.22	0.75	-	0.76
May	1.38	1.38	1.18	0.95	W	0.94	1.65	1.65	1.46	1.15	-	1.16
June	1.57	1.56	1.46	1.21	1.01	1.21	1.85	1.84	1.72	1.42	-	1.43
July	1.60	1.60	1.55	1.27	W	1.28	1.91	1.90	W	1.49	-	1.50
August	1.59	1.58	1.57	1.28	W	1.28	1.89	1.89	W	1.49	-	1.50
September	1.57	1.57	1.53	1.25	W	1.26	1.89	1.88	W	1.46	-	1.47
October	1.53	1.53	1.47	1.21	W	1.22	1.86	1.85	W	1.40	-	1.41
November	1.49	1.49	1.49	1.18	W	1.19	1.79	1.79	1.79	1.37	-	1.39
December	1.60	1.60	1.55	1.30	W	1.30	1.90	1.89	W	1.48	-	1.50
2020	1.60	1.60	1.53	1.22	1.17	1.22	1.90	1.89	1.82	1.41	-	1.42
<b>2021</b>												
January	1.77	1.76	1.70	1.48	W	1.48	2.06	2.05	W	1.66	-	1.67
February	1.98	1.98	1.88	1.69	W	1.69	2.26	2.25	W	1.87	-	1.88
March	2.21	2.21	2.16	1.91	W	1.91	2.52	2.51	W	2.13	-	2.14
April	2.25	2.25	2.25	1.94	W	1.95	2.55	2.55	W	2.16	-	2.18
May	2.39	2.39	2.38	2.06	W	2.07	2.70	2.68	W	2.29	-	2.30
June	2.67	2.66	2.44	2.13	W	2.14	2.99	2.91	W	2.39	-	2.41
July	2.79	2.77	2.57	2.22	W	2.23	3.14	3.09	W	2.50	-	2.52
August	2.81	2.79	2.65	2.18	W	2.19	3.17	3.11	W	2.45	-	2.47
September	2.79	2.77	2.54	2.20	W	2.21	3.19	3.12	W	2.44	-	2.46
October	2.82	2.81	2.65	2.38	W	2.38	3.22	3.15	W	2.57	-	2.59
November	2.87	2.85	2.69	2.35	W	2.35	3.23	3.17	W	2.52	-	2.54
December	2.81	2.78	2.56	2.17	W	2.18	3.17	3.11	W	2.32	-	2.35
2021	2.24	2.24	2.42	2.08	W	2.08	2.56	2.55	W	2.30	-	2.31
<b>2022</b>												
January	2.75	2.73	2.73	2.30	W	2.31	3.06	3.03	W	2.47	-	2.51
February	R2.93	R2.91	R2.85	R2.50	W	R2.51	R3.22	R3.19	W	R2.67	-	R2.70
March	3.57	3.54	3.55	3.07	W	3.08	3.87	3.82	W	3.26	-	3.29

See footnotes at end of table.

**Table 8. U.S. refiner conventional motor gasoline prices by grade and sales type (cont.)**

dollars per gallon excluding taxes

Year month	Premium						All grades					
	Sales to end users		Sales for resale				Sales to end users		Sales for resale			
	Through retail outlets	Average[a]	DTW	Rack	Bulk	Average	Through retail outlets	Average[a]	DTW	Rack	Bulk	Average
1994	0.86	0.85	0.77	0.63	0.55	0.68	0.73	0.72	0.68	0.56	0.50	0.58
1995	0.87	0.86	0.79	0.66	0.56	0.68	0.75	0.74	0.69	0.59	0.53	0.59
1996	0.96	0.95	0.86	0.75	0.64	0.76	0.83	0.82	0.77	0.68	0.61	0.68
1997	0.95	0.94	0.85	0.74	0.64	0.75	0.81	0.81	0.75	0.66	0.60	0.66
1998	0.78	0.77	0.68	W	0.47	0.57	0.65	0.64	0.58	0.49	0.44	0.49
1999	0.87	0.86	0.80	0.67	0.55	0.68	0.74	0.74	0.71	0.61	0.52	0.60
2000	1.21	1.20	1.12	1.00	0.89	1.00	1.07	1.07	1.02	0.92	0.84	0.92
2001	1.12	1.12	1.04	0.92	0.80	0.92	0.99	0.98	0.94	0.84	0.76	0.84
2002	1.06	1.05	0.97	0.88	0.78	0.88	0.92	0.92	0.86	0.80	0.72	0.79
2003	1.25	1.24	1.17	1.05	0.92	1.05	1.10	1.10	1.06	0.96	0.87	0.95
2004	1.54	1.53	1.46	1.34	1.24	1.34	1.39	1.38	1.34	1.25	1.17	1.24
2005	1.96	1.95	1.85	1.74	1.65	1.74	1.80	1.79	1.73	1.65	1.56	1.64
2006	2.27	2.26	2.21	2.07	1.98	2.07	2.08	2.08	2.07	1.94	1.86	1.93
2007	2.50	2.49	2.41	2.32	2.18	2.31	2.31	2.30	2.26	2.17	2.07	2.15
2008	2.92	2.92	2.85	2.72	2.65	2.72	2.73	2.73	2.71	2.57	2.51	2.56
2009	2.06	2.05	2.01	1.92	1.80	1.91	1.84	1.84	1.84	1.75	1.66	1.73
2010	2.48	2.47	2.44	2.32	2.17	2.31	2.26	2.25	2.27	2.15	2.06	2.14
2011	3.23	3.21	3.10	3.03	2.86	3.01	3.01	3.00	2.93	2.85	2.75	2.84
2012	3.31	3.29	3.19	3.11	3.09	3.11	3.09	3.08	3.02	2.88	2.84	2.88
2013	3.23	3.21	3.01	3.05	3.00	3.04	2.99	2.97	2.82	2.77	2.75	2.77
2014	3.06	3.04	2.90	2.88	2.79	2.87	2.80	2.77	2.73	2.58	2.53	2.58
2015	2.21	2.21	2.08	2.01	1.81	1.99	1.86	1.86	1.89	1.66	1.59	1.66
2016	2.04	2.03	1.70	1.75	1.51	1.73	1.63	1.63	1.53	1.41	1.35	1.41
2017	2.33	2.33	2.00	1.97	1.79	1.96	1.87	1.87	1.82	1.64	1.62	1.64
2018	2.67	2.66	2.41	2.26	2.06	2.24	2.17	2.17	2.21	1.92	1.91	1.92
2019	2.58	2.56	2.32	2.11	1.89	2.11	2.07	2.06	2.10	1.77	1.68	1.77
<b>2020</b>												
January	2.52	2.50	2.13	1.98	1.82	1.98	2.00	1.99	1.93	1.66	W	1.66
February	2.42	2.39	2.14	W	1.74	1.91	1.89	1.88	1.93	1.58	W	1.59
March	2.22	2.21	1.76	W	1.17	1.38	1.66	1.66	1.56	1.04	W	1.05
April	1.85	1.85	W	0.86	0.64	0.85	1.29	1.28	0.97	0.56	0.53	0.57
May	1.96	1.96	W	1.29	0.94	1.28	1.44	1.44	1.24	0.99	0.74	0.98
June	2.14	2.14	1.73	1.57	1.22	1.55	1.62	1.62	1.52	1.26	1.05	1.25
July	2.20	2.20	1.81	W	1.33	1.63	1.66	1.66	1.61	1.32	W	1.32
August	2.19	2.19	1.82	W	1.33	1.63	1.65	1.65	1.62	1.32	W	1.32
September	2.18	2.18	1.78	W	1.30	1.59	1.63	1.63	1.58	1.29	W	1.30
October	2.15	2.15	1.73	W	1.26	1.54	1.60	1.60	1.52	1.25	W	1.25
November	2.10	2.10	W	1.51	1.22	1.50	1.55	1.55	1.55	1.22	1.15	1.22
December	2.20	2.20	1.80	W	1.38	1.61	1.66	1.66	1.60	1.33	W	1.34
<b>2020</b>	2.19	2.18	1.78	1.57	1.28	1.56	1.66	1.66	1.58	1.26	1.19	1.26
<b>2021</b>												
January	2.36	2.36	1.96	W	1.54	1.77	1.83	1.82	1.75	1.51	W	1.51
February	2.57	2.56	2.16	W	1.79	1.99	2.04	2.03	1.94	1.72	W	1.72
March	2.82	2.82	2.46	W	2.05	2.26	2.27	2.27	2.22	1.95	W	1.95
April	2.85	2.85	2.57	W	2.08	2.30	2.31	2.31	2.32	1.99	W	1.99
May	3.02	3.01	2.69	W	2.19	2.42	2.46	2.46	2.44	2.10	W	2.11
June	W	W	2.76	W	2.31	2.51	2.76	2.74	2.50	2.17	W	2.18
July	W	W	2.91	W	2.45	2.64	2.87	2.85	2.63	2.27	W	2.28
August	W	W	2.98	W	2.41	2.60	2.90	2.87	2.71	2.23	W	2.24
September	W	W	2.84	W	2.30	2.57	2.87	2.85	2.60	2.24	W	2.25
October	W	W	2.93	W	2.50	2.72	2.90	2.88	2.71	2.41	W	2.42
November	W	W	2.97	W	2.34	2.68	2.94	2.91	2.74	2.38	W	2.39
December	W	W	2.81	W	2.25	2.50	2.88	2.85	2.61	2.20	W	2.21
<b>2021</b>	2.89	2.88	2.70	W	2.16	2.43	2.31	2.31	2.47	2.12	W	2.12
<b>2022</b>												
January	3.36	3.34	2.97	W	2.43	2.64	2.82	2.80	2.78	2.33	W	2.34
February	R3.53	R3.51	R3.14	W	R2.75	R2.87	R2.99	R2.97	R2.90	R2.54	W	R2.55
March	4.17	4.14	3.90	W	3.37	3.48	3.63	3.60	3.61	3.11	W	3.12

NA = Not available.

- = No data reported.

W = Withheld to avoid disclosure of individual company data.

R = Revised data.

[a] Includes sales through retail outlets as well as all direct sales to end users that were not made through company-operated retail outlets, e.g., sales to agricultural customers, commercial sales, and industrial sales.

Notes: - Beginning January 2007, oxygenated gasoline is included in conventional gasoline. - The 4th quarter of 1993 was a transitional period between the predecessor EIA-782 survey system and the revised EIA-782 survey system. The revised survey system contains additional product and sales categories, which may not be consistent with categories derived from the predecessor survey system. Beginning January 1994 all data are from the revised survey system and are consistent. Sales to end users - Values shown for the current month are preliminary. Values shown for previous months may be revised. Data through 2021 are final.

Data source: U.S. Energy Information Administration Form EIA-782A, Refiners'/Gas Plant Operators' Monthly Petroleum Product Sales Report.

**Table 9. U.S. refiner conventional motor gasoline volumes by grade and sales type**

million gallons per day

Year month	Regular						Midgrade					
	Sales to end users		Sales for resale				Sales to end users		Sales for resale			
	Through retail outlets	Total[a]	DTW	Rack	Bulk	Total	Through retail outlets	Total[a]	DTW	Rack	Bulk	Total
1994	29.70	31.20	36.10	113.50	22.80	172.40	7.60	7.80	10.10	14.60	0.10	24.80
1995	24.00	25.30	19.40	105.10	26.00	150.50	6.00	6.30	5.10	13.60	0.10	18.70
1996	24.10	25.40	17.80	108.50	27.10	153.40	5.70	5.90	4.40	12.90	NA	17.30
1997	25.00	26.40	16.40	110.90	26.40	153.70	5.70	5.90	3.90	12.70	W	16.60
1998	25.40	26.60	13.70	112.00	28.80	154.50	6.00	6.10	3.40	12.50	W	15.80
1999	25.00	26.00	13.40	117.40	24.90	155.80	5.90	6.00	3.10	12.20	-	15.30
2000	26.00	27.10	12.80	125.70	23.90	162.40	4.90	5.00	2.30	10.80	-	13.10
2001	26.60	27.40	12.00	128.50	24.00	164.50	4.60	4.70	1.90	10.20	-	12.00
2002	27.20	28.00	11.30	127.90	31.00	170.20	4.70	4.80	1.60	10.40	-	11.90
2003	27.50	28.30	10.30	131.10	32.40	173.80	4.30	4.40	1.20	10.00	-	11.20
2004	26.50	27.30	9.70	136.70	36.10	182.50	3.50	3.60	0.90	9.80	-	10.80
2005	27.40	28.30	9.00	140.10	36.40	185.50	3.10	3.20	0.70	10.80	-	11.50
2006	28.90	29.80	7.30	143.70	37.40	188.40	2.90	2.90	0.50	9.30	-	9.70
2007	29.60	30.20	7.40	150.30	43.00	200.70	2.60	2.60	0.50	10.30	-	10.80
2008	28.90	29.80	7.10	144.50	39.50	191.10	2.10	2.20	0.40	9.90	-	10.30
2009	26.50	27.80	6.60	147.00	35.90	189.50	1.90	1.90	0.30	9.10	-	9.40
2010	24.90	26.20	5.90	147.60	37.10	190.70	1.70	1.70	0.20	8.70	-	8.90
2011	21.30	22.40	5.40	147.30	26.30	179.00	1.30	1.30	0.10	7.40	-	7.50
2012	14.40	15.70	5.00	149.00	21.70	175.80	0.90	0.90	0.10	7.20	-	7.40
2013	11.60	13.00	6.20	149.90	18.80	174.90	0.70	0.70	0.10	5.70	-	5.80
2014	11.10	12.50	4.30	154.90	16.80	176.00	0.60	0.60	0.10	2.10	-	2.30
2015	14.00	14.30	3.90	160.70	16.80	181.40	0.80	0.80	0.10	1.90	-	2.00
2016	14.10	14.30	4.10	163.40	15.80	183.30	0.90	0.90	0.10	1.70	-	1.80
2017	13.30	13.50	3.90	165.50	13.00	182.40	0.80	0.80	0.10	1.50	-	1.60
2018	13.00	13.30	3.50	166.90	15.20	185.60	0.70	0.80	0.10	1.30	-	1.40
2019	13.10	13.40	3.40	168.80	10.70	183.00	0.70	0.70	0.10	1.20	-	1.30
<b>2020</b>												
January	12.30	12.60	3.10	W	W	171.60	0.70	0.70	W	W	-	1.10
February	12.60	12.90	W	163.10	W	175.40	0.70	0.70	W	W	-	1.10
March	10.20	10.40	W	144.80	W	155.00	0.60	0.60	W	W	-	1.10
April	6.90	7.00	W	111.80	W	117.40	0.40	0.40	0.00	0.80	-	0.90
May	8.60	8.80	W	134.00	W	143.60	0.50	0.50	0.00	1.00	-	1.00
June	10.50	10.60	2.70	157.10	6.90	166.70	0.60	0.70	0.00	1.20	-	1.20
July	11.30	11.40	W	160.80	W	168.70	0.70	0.70	W	W	-	1.30
August	11.20	11.30	W	160.00	W	168.90	0.70	0.70	W	W	-	1.20
September	11.10	11.20	W	158.30	W	166.60	0.70	0.70	W	W	-	1.10
October	11.30	11.40	W	158.00	W	165.60	0.70	0.70	W	W	-	1.00
November	10.30	10.40	W	149.30	W	157.20	0.60	0.60	0.00	0.90	-	1.00
December	10.00	10.10	W	150.20	W	157.20	0.60	0.60	W	W	-	0.90
<b>2020</b>	10.50	10.70	2.70	150.50	6.30	159.50	0.60	0.60	0.00	1.00	-	1.10
<b>2021</b>												
January	9.80	9.90	W	144.00	W	150.70	0.60	0.60	W	W	-	0.90
February	10.00	10.10	W	145.80	W	153.90	0.60	0.60	W	W	-	0.90
March	10.90	11.00	W	159.40	W	167.20	0.60	0.70	W	W	-	1.00
April	11.30	11.40	W	164.80	W	173.40	0.70	0.70	W	W	-	1.10
May	6.10	6.20	W	171.60	W	180.90	0.40	0.40	W	W	-	1.20
June	W	W	W	180.40	W	190.00	W	W	W	W	-	1.30
July	W	W	W	181.20	W	190.50	W	W	W	W	-	1.30
August	W	W	W	180.10	W	187.50	W	W	W	W	-	1.30
September	W	W	W	176.70	W	185.10	W	W	W	W	-	1.10
October	W	W	W	172.10	W	180.70	W	W	W	W	-	0.90
November	W	W	W	172.90	W	183.30	W	W	W	W	-	0.90
December	W	W	W	169.90	W	179.10	W	W	W	W	-	0.90
<b>2021</b>	4.90	5.00	W	168.40	W	177.00	0.30	0.30	W	W	-	1.10
<b>2022</b>												
January	2.00	2.10	W	154.90	W	162.50	0.10	0.10	W	W	-	0.80
February	2.10	2.20	W	R167.50	W	R174.50	0.10	0.10	W	W	-	R0.90
March	2.10	2.20	W	169.40	W	175.70	0.10	0.10	W	W	-	0.90

See footnotes at end of table.

**Table 9. U.S. refiner conventional motor gasoline volumes by grade and sales type (cont.)**

million gallons per day

Year month	Premium						All grades					
	Sales to end users		Sales for resale				Sales to end users		Sales for resale			
	Through retail outlets	Total[a]	DTW	Rack	Bulk	Total	Through retail outlets	Total[a]	DTW	Rack	Bulk	Total
1994	8.50	8.90	16.50	28.00	2.80	47.20	45.80	47.90	62.70	156.00	25.80	244.50
1995	6.20	6.40	7.70	25.10	2.90	35.60	36.20	38.00	32.10	143.80	28.90	204.80
1996	4.90	5.10	5.80	22.50	2.50	30.80	34.70	36.50	28.10	143.80	29.60	201.50
1997	4.80	5.00	5.10	21.90	2.50	29.50	35.40	37.20	25.40	145.60	28.90	199.80
1998	5.50	5.70	4.70	W	2.70	31.90	36.90	38.50	21.80	148.90	31.50	202.20
1999	5.00	5.20	4.30	24.10	3.80	32.20	35.90	37.20	20.80	153.70	28.70	203.30
2000	3.70	3.90	3.10	18.60	2.80	24.50	34.70	35.90	18.20	155.10	26.70	200.00
2001	3.70	3.80	2.80	18.70	2.70	24.10	35.00	36.00	16.70	157.40	26.70	200.70
2002	3.80	4.00	2.60	19.10	3.00	24.70	35.80	36.80	15.50	157.40	34.00	206.90
2003	3.40	3.50	2.10	17.50	2.40	21.90	35.10	36.30	13.60	158.60	34.80	207.00
2004	2.60	2.80	1.60	15.80	1.70	19.20	32.60	33.70	12.30	162.30	37.80	212.40
2005	2.30	2.40	1.40	14.40	1.90	17.70	32.80	33.80	11.00	165.40	38.20	214.60
2006	2.10	2.20	1.10	13.90	1.70	16.60	33.90	35.00	8.80	166.80	39.10	214.70
2007	2.10	2.20	1.10	14.40	2.00	17.40	34.30	35.00	9.00	175.00	44.90	228.90
2008	1.80	1.90	0.90	11.70	1.50	14.20	32.90	33.90	8.40	166.20	41.00	215.60
2009	1.70	1.80	0.90	12.90	1.80	15.60	30.00	31.50	7.80	169.00	37.70	214.50
2010	1.50	1.60	0.80	13.50	1.70	15.90	28.20	29.50	6.90	169.80	38.80	215.50
2011	1.20	1.30	0.70	12.60	1.80	15.10	23.80	25.10	6.20	167.30	28.10	201.60
2012	1.00	1.10	0.70	13.20	2.40	16.20	16.30	17.70	5.80	169.50	24.10	199.40
2013	0.80	0.90	0.80	14.00	2.40	17.20	13.10	14.50	7.10	169.60	21.20	197.90
2014	0.70	0.80	0.70	15.10	2.10	17.90	12.50	14.00	5.10	172.10	18.90	196.20
2015	1.10	1.10	0.70	16.80	1.80	19.40	15.90	16.20	4.80	179.40	18.60	202.80
2016	1.10	1.20	0.80	17.70	2.10	20.60	16.10	16.40	5.00	182.80	17.90	205.70
2017	1.00	1.00	0.80	17.80	1.50	20.00	15.10	15.30	4.80	184.70	14.50	204.00
2018	1.00	1.00	0.70	17.80	1.70	20.20	14.70	15.00	4.40	185.90	16.90	207.20
2019	1.00	1.00	0.70	18.40	1.40	20.50	14.80	15.10	4.20	188.40	12.10	204.70
2020												
January	0.90	0.90	0.70	17.10	1.40	19.30	13.80	14.10	W	176.70	W	191.90
February	0.90	1.00	0.70	W	W	19.50	14.20	14.60	W	181.90	W	196.00
March	0.80	0.80	0.60	W	W	18.10	11.60	11.80	W	162.10	W	174.10
April	0.60	0.60	W	13.10	W	14.80	7.90	8.00	2.10	125.70	5.20	133.00
May	0.80	0.80	W	16.90	W	18.40	10.00	10.10	2.90	152.00	8.20	163.00
June	0.90	1.00	0.70	19.80	1.70	22.10	12.10	12.20	3.40	178.00	8.60	190.00
July	1.00	1.00	0.70	W	W	22.30	13.00	13.10	W	182.60	W	192.30
August	1.00	1.00	0.80	W	W	22.30	12.80	13.00	W	181.80	W	192.40
September	1.00	1.00	0.70	W	W	22.20	12.70	12.90	W	179.50	W	189.90
October	1.00	1.00	0.70	W	W	21.30	12.90	13.00	W	178.70	W	188.00
November	0.90	0.90	W	18.50	W	20.50	11.70	11.90	3.20	168.70	6.80	178.60
December	0.90	0.90	0.60	W	W	19.90	11.50	11.60	W	169.20	W	178.00
2020	0.90	0.90	0.60	18.20	1.20	20.10	12.00	12.20	3.40	169.70	7.50	180.60
2021												
January	0.80	0.80	0.60	W	W	19.60	11.20	11.30	W	162.30	W	171.20
February	0.80	0.80	0.60	W	W	19.60	11.50	11.60	W	164.10	W	174.40
March	0.90	0.90	0.70	W	W	20.20	12.40	12.60	W	178.90	W	188.40
April	0.90	1.00	0.70	W	W	22.40	12.90	13.10	W	186.10	W	196.90
May	0.60	0.60	0.80	W	W	24.00	7.10	7.20	W	194.30	W	206.10
June	W	W	0.90	W	W	24.20	W	W	W	203.70	W	215.50
July	W	W	0.90	W	W	24.20	W	W	W	204.70	W	216.10
August	W	W	0.80	W	W	23.40	W	W	W	203.10	W	212.20
September	W	W	0.80	W	W	23.20	W	W	W	198.50	W	209.30
October	W	W	0.80	W	W	21.70	W	W	W	192.70	W	203.30
November	W	W	0.70	W	W	21.50	W	W	W	193.00	W	205.70
December	W	W	0.70	W	W	21.10	W	W	W	189.80	W	201.20
2021	0.40	0.40	0.70	W	W	22.10	5.70	5.80	W	189.40	W	200.20
2022												
January	0.20	0.20	0.70	W	W	19.30	2.30	2.40	W	172.70	W	182.70
February	0.20	0.20	R0.70	W	W	19.60	2.40	2.50	W	R186.10	W	R195.00
March	0.20	0.20	0.60	W	W	18.60	2.40	2.60	W	187.10	W	195.20

NA = Not available.

- = No data reported.

W = Withheld to avoid disclosure of individual company data.

R = Revised data.

[a] Includes sales through retail outlets as well as all direct sales to end users that were not made through company-operated retail outlets, e.g., sales to agricultural customers, commercial sales, and industrial sales.

Notes: - Beginning January 2007, oxygenated gasoline is included in conventional gasoline. Sales to end users Year month Sales for resale - Values shown for the current month are preliminary. Values shown for previous months are revised. Data through 2021 are final. Totals may not equal the sum of the components due to rounding. - The 4th quarter of 1993 was a transitional period between the predecessor EIA-782 survey system and the revised EIA-782 survey system. The revised survey system contains additional product and sales categories, which may not be consistent with categories derived from the predecessor survey system. Beginning January 1994 all data are from the revised survey system and are consistent.

Data source: U.S. Energy Information Administration Form EIA-782A, Refiners'/Gas Plant Operators' Monthly Petroleum Product Sales Report.

**Table 10. U.S. refiner reformulated motor gasoline prices by grade and sales type**

dollars per gallon excluding taxes

Year month	Regular						Midgrade					
	Sales to end users		Sales for resale				Sales to end users		Sales for resale			
	Through retail outlets	Average[a]	DTW	Rack	Bulk	Average	Through retail outlets	Average[a]	DTW	Rack	Bulk	Average
1994	0.76	0.75	0.72	0.56	0.54	0.63	0.87	0.87	0.77	0.62	W	0.72
1995	0.74	0.74	0.70	0.60	0.57	0.65	0.83	0.83	0.75	0.65	-	0.72
1996	0.83	0.83	0.78	0.69	0.67	0.73	0.92	0.92	0.83	0.74	W	0.80
1997	0.83	0.82	0.78	0.68	0.66	0.73	0.92	0.92	0.84	0.72	W	0.80
1998	0.66	0.66	0.61	0.50	0.48	0.55	0.76	0.76	0.67	0.55	W	0.63
1999	0.80	0.80	0.75	0.64	0.60	0.68	0.89	0.89	0.80	0.67	NA	0.76
2000	1.12	1.12	1.05	0.97	0.95	1.01	1.21	1.21	1.11	1.01	-	1.08
2001	1.05	1.05	1.00	0.89	0.85	0.93	1.16	1.16	1.06	0.94	-	1.02
2002	0.94	0.94	0.90	0.83	0.77	0.86	1.05	1.05	0.98	0.87	-	0.95
2003	1.19	1.19	1.16	1.00	0.96	1.06	1.29	1.29	1.22	1.04	-	1.16
2004	1.47	1.47	1.44	1.29	1.24	1.35	1.57	1.57	1.49	1.34	-	1.43
2005	1.85	1.84	1.78	1.68	1.61	1.71	1.94	1.94	1.83	1.72	-	1.78
2006	2.16	2.16	2.09	2.00	1.88	2.03	2.27	2.27	2.17	2.07	-	2.12
2007	2.36	2.36	2.28	2.18	2.17	2.22	2.49	2.48	2.36	2.25	-	2.31
2008	2.81	2.81	2.70	2.55	2.64	2.60	2.93	2.93	2.78	2.65	-	2.72
2009	1.92	1.92	1.87	1.77	1.78	1.80	2.06	2.06	1.98	1.85	-	1.91
2010	2.34	2.33	2.26	2.15	2.14	2.18	2.48	2.48	2.36	2.22	-	2.28
2011	3.08	3.08	2.97	2.87	2.83	2.89	3.23	3.23	3.06	2.95	-	2.99
2012	3.21	3.21	3.11	2.95	2.94	2.98	3.37	3.37	3.21	3.04	-	3.09
2013	3.11	3.10	2.94	2.83	2.86	2.85	3.26	3.26	3.06	2.93	-	2.97
2014	2.94	2.93	2.78	2.61	2.66	2.64	3.11	3.11	2.92	2.74	-	2.78
2015	2.15	2.15	2.17	1.72	1.77	1.80	2.40	2.40	2.32	1.89	-	1.98
2016	1.80	1.80	1.76	1.43	1.46	1.49	2.04	2.04	1.91	1.57	-	1.65
2017	2.04	2.04	2.00	1.67	1.71	1.72	2.30	2.30	2.16	1.81	-	1.89
2018	2.41	2.41	2.40	1.96	2.02	2.03	2.69	2.69	2.56	2.12	-	2.22
2019	2.43	2.42	2.46	1.86	1.92	1.96	2.74	2.74	2.65	2.07	-	2.20
<b>2020</b>												
January	2.29	2.28	2.29	1.74	W	1.83	2.61	2.61	W	W	-	2.10
February	2.24	2.23	2.25	1.67	W	1.77	2.56	2.56	W	1.90	-	2.05
March	2.08	2.08	1.89	1.10	W	1.23	2.46	2.46	W	1.31	-	1.49
April	1.73	1.72	1.30	0.66	W	0.76	2.10	2.10	1.51	0.84	-	1.00
May	1.76	1.76	1.49	1.07	W	1.14	2.06	2.06	1.73	1.24	-	1.35
June	1.90	1.90	1.75	1.30	1.38	1.38	2.20	2.20	1.96	1.45	-	1.56
July	1.93	1.93	1.83	1.38	W	1.45	2.25	2.25	W	1.51	-	1.61
August	1.96	1.96	1.89	1.38	W	1.46	2.29	2.29	W	1.53	-	1.66
September	1.95	1.95	1.87	1.32	W	1.41	2.29	2.29	W	1.47	-	1.60
October	1.93	1.93	1.81	1.29	W	1.37	2.28	2.28	W	1.44	-	1.58
November	1.90	1.90	1.80	1.28	W	1.35	2.25	2.25	2.00	1.44	-	1.57
December	1.96	1.96	1.85	1.38	W	1.45	2.29	2.29	W	1.54	-	1.67
<b>2020</b>	1.99	1.99	1.87	1.33	1.29	1.41	2.32	2.32	2.09	1.50	-	1.64
<b>2021</b>												
January	2.12	2.12	2.05	1.57	W	1.64	2.45	2.45	W	1.74	-	1.88
February	2.34	2.34	2.25	1.77	W	1.85	2.67	2.67	W	1.95	-	2.09
March	2.60	2.59	2.54	1.98	W	2.07	2.93	2.93	W	2.18	-	2.32
April	2.67	2.67	2.63	2.03	W	2.12	3.00	3.00	W	2.21	-	2.38
May	2.86	2.86	2.79	2.16	W	2.26	3.16	3.16	W	2.34	-	2.49
June	W	W	2.87	2.24	W	2.33	W	W	W	2.41	-	2.56
July	W	W	2.93	2.29	W	2.39	W	W	W	2.44	-	2.60
August	W	W	2.93	2.26	W	2.37	W	W	W	2.41	-	2.57
September	W	W	2.90	2.27	W	2.37	W	W	W	2.44	-	2.58
October	W	W	3.09	2.49	W	2.58	W	W	W	2.66	-	2.82
November	W	W	3.23	2.51	W	2.62	W	W	W	2.71	-	2.90
December	W	W	3.11	2.31	W	2.43	W	W	W	2.50	-	2.72
<b>2021</b>	2.76	2.76	2.81	2.18	W	2.28	3.10	3.10	W	2.35	-	2.51
<b>2022</b>												
January	3.30	3.29	3.13	2.42	W	2.53	3.60	3.60	W	2.61	-	2.83
February	3.46	3.45	R3.27	R2.66	W	R2.75	3.73	3.73	W	R2.85	-	R3.04
March	4.20	4.19	4.13	3.28	W	3.40	4.48	4.48	W	3.51	-	3.72

See footnotes at end of table.

**Table 10. U.S. refiner reformulated motor gasoline prices by grade and sales type (cont.)**

dollars per gallon excluding taxes

Year month	Premium						All grades					
	Sales to end users		Sales for resale				Sales to end users		Sales for resale			
	Through retail outlets	Average[a]	DTW	Rack	Bulk	Average	Through retail outlets	Average[a]	DTW	Rack	Bulk	Average
1994	0.96	0.95	0.86	0.67	0.55	0.77	0.83	0.82	0.77	0.59	0.54	0.68
1995	0.92	0.92	0.84	0.70	0.61	0.78	0.80	0.80	0.75	0.63	0.58	0.69
1996	1.00	0.99	0.91	0.79	0.70	0.85	0.88	0.87	0.82	0.72	0.68	0.77
1997	1.00	1.00	0.91	0.77	0.68	0.85	0.87	0.87	0.82	0.70	0.67	0.76
1998	0.84	0.84	0.74	W	0.51	0.68	0.71	0.71	0.65	0.52	0.48	0.59
1999	0.96	0.96	0.87	0.71	0.63	0.79	0.84	0.84	0.78	0.65	0.60	0.71
2000	1.29	1.29	1.18	1.06	0.97	1.12	1.16	1.16	1.09	0.99	0.95	1.03
2001	1.23	1.23	1.13	0.98	0.89	1.06	1.10	1.09	1.03	0.90	0.85	0.96
2002	1.12	1.11	1.04	0.93	0.83	0.99	0.98	0.98	0.94	0.85	0.78	0.89
2003	1.36	1.36	1.29	1.09	1.02	1.20	1.23	1.22	1.19	1.02	0.96	1.09
2004	1.65	1.65	1.57	1.39	1.34	1.48	1.51	1.50	1.47	1.31	1.25	1.37
2005	2.03	2.02	1.91	1.79	1.76	1.84	1.88	1.88	1.81	1.69	1.63	1.73
2006	2.36	2.36	2.23	2.14	2.00	2.18	2.20	2.20	2.12	2.02	1.90	2.05
2007	2.60	2.59	2.46	2.36	2.34	2.41	2.40	2.40	2.32	2.20	2.19	2.25
2008	3.00	3.00	2.84	2.70	2.82	2.77	2.84	2.84	2.72	2.56	2.65	2.62
2009	2.17	2.17	2.06	1.96	1.89	2.01	1.97	1.96	1.91	1.79	1.79	1.83
2010	2.58	2.58	2.44	2.34	2.24	2.38	2.38	2.38	2.29	2.18	2.15	2.21
2011	3.33	3.33	3.14	3.06	2.94	3.09	3.13	3.12	3.00	2.89	2.83	2.92
2012	3.47	3.47	3.28	3.20	3.17	3.22	3.26	3.25	3.14	2.98	2.96	3.02
2013	3.37	3.36	3.13	3.10	3.07	3.11	3.16	3.15	2.98	2.86	2.88	2.89
2014	3.20	3.20	2.94	2.86	2.64	2.88	3.00	2.99	2.81	2.64	2.66	2.68
2015	2.51	2.51	2.35	2.06	2.14	2.14	2.24	2.24	2.21	1.77	1.79	1.86
2016	2.20	2.20	1.98	1.75	1.71	1.81	1.90	1.89	1.81	1.48	1.48	1.54
2017	2.46	2.46	2.24	1.97	1.96	2.04	2.14	2.14	2.06	1.71	1.74	1.78
2018	2.86	2.86	2.64	2.24	2.27	2.35	2.51	2.51	2.46	2.00	2.05	2.09
2019	2.91	2.91	2.71	2.19	2.21	2.32	2.54	2.53	2.52	1.91	1.96	2.02
<b>2020</b>												
January	2.80	2.79	2.58	2.08	2.09	2.21	2.40	2.40	2.35	1.79	W	1.90
February	2.75	2.74	2.54	W	W	2.13	2.35	2.35	2.32	1.72	W	1.83
March	2.61	2.61	2.15	W	W	1.60	2.21	2.21	1.95	1.15	W	1.29
April	2.28	2.28	W	0.94	W	1.09	1.86	1.86	1.37	0.70	0.70	0.81
May	2.23	2.23	W	1.36	W	1.47	1.88	1.88	1.56	1.12	1.18	1.20
June	2.38	2.37	2.04	1.60	1.53	1.70	2.02	2.02	1.83	1.35	1.41	1.44
July	2.42	2.42	2.13	W	W	1.77	2.05	2.05	1.90	1.42	W	1.51
August	2.47	2.47	2.20	W	W	1.79	2.09	2.08	1.97	1.43	W	1.52
September	2.47	2.47	2.16	W	W	1.73	2.08	2.08	1.94	1.37	W	1.47
October	2.45	2.45	2.11	W	W	1.66	2.06	2.06	1.89	1.33	W	1.43
November	2.43	2.43	W	1.54	1.12	1.65	2.03	2.03	1.88	1.32	1.11	1.41
December	2.48	2.48	2.14	W	W	1.76	2.09	2.09	1.93	1.43	W	1.51
<b>2020</b>	2.50	2.49	2.15	1.62	1.41	1.74	2.11	2.11	1.94	1.37	1.31	1.47
<b>2021</b>												
January	2.63	2.63	2.35	W	W	1.96	2.25	2.25	2.13	1.61	W	1.70
February	2.86	2.86	2.56	W	W	2.18	2.47	2.47	2.33	1.82	W	1.91
March	3.11	3.11	2.84	W	W	2.42	2.72	2.72	2.61	2.03	W	2.13
April	3.19	3.19	2.95	W	W	2.48	2.80	2.79	2.72	2.08	W	2.19
May	3.35	3.35	3.10	W	W	2.63	2.99	2.99	2.87	2.22	W	2.33
June	W	W	3.19	W	W	2.71	W	W	2.95	2.29	W	2.40
July	W	W	3.25	W	W	2.76	W	W	3.01	2.35	W	2.46
August	W	W	3.25	W	W	2.74	W	W	3.01	2.32	W	2.43
September	W	W	3.21	W	W	2.74	W	W	2.98	2.33	W	2.44
October	W	W	3.40	W	W	2.95	W	W	3.17	2.54	W	2.65
November	W	W	3.53	W	W	3.01	W	W	3.31	2.56	W	2.69
December	W	W	3.40	W	W	2.81	W	W	3.18	2.36	W	2.50
<b>2021</b>	3.29	3.29	3.11	W	W	2.63	2.91	2.91	2.88	2.23	W	2.34
<b>2022</b>												
January	3.81	3.81	3.42	W	W	2.89	3.44	3.43	3.20	2.46	W	2.59
February	3.95	3.94	R3.59	W	W	3.11	3.59	3.59	R3.35	R2.71	W	R2.81
March	4.70	4.70	4.45	W	W	3.83	4.33	4.32	4.20	3.34	W	3.47

NA = Not available.

- = No data reported.

W = Withheld to avoid disclosure of individual company data.

[a] Includes sales through retail outlets as well as all direct sales to end users that were not made through company-operated retail outlets, e.g., sales to agricultural customers, commercial sales, and industrial sales.

Notes: - Values shown for the current month are preliminary. Values shown for previous months may be revised. Data through 2021 are final.

Data source: U.S. Energy Information Administration Form EIA-782A, Refiners'/Gas Plant Operators' Monthly Petroleum Product Sales Report.

**Table 11. U.S. refiner reformulated motor gasoline volumes by grade and sales type**

million gallons per day

Year month	Regular						Midgrade					
	Sales to end users		Sales for resale				Sales to end users		Sales for resale			
	Through retail outlets	Total[a]	DTW	Rack	Bulk	Total	Through retail outlets	Total[a]	DTW	Rack	Bulk	Total
1994	0.60	0.60	2.10	1.60	0.60	4.30	0.20	0.20	0.70	0.30	W	1.00
1995	7.80	8.10	20.70	W	W	43.30	3.00	3.10	7.40	3.10	-	10.50
1996	10.70	11.10	26.10	20.50	8.00	54.60	3.30	3.40	7.90	3.30	W	11.30
1997	13.40	13.80	28.00	21.70	7.60	57.30	3.60	3.70	7.90	3.10	W	11.00
1998	14.30	14.50	28.60	23.00	8.30	59.90	3.70	3.80	7.40	3.10	W	10.50
1999	14.50	14.80	29.80	26.10	9.60	65.50	3.60	3.70	7.00	3.10	NA	10.20
2000	15.50	15.90	32.10	29.10	8.50	69.60	3.30	3.40	6.20	2.60	-	8.80
2001	16.30	16.70	32.70	30.00	9.00	71.70	3.30	3.30	5.70	2.20	-	7.90
2002	16.90	17.20	33.10	30.40	8.20	71.70	3.30	3.30	5.60	2.10	-	7.60
2003	17.70	18.00	30.90	35.10	7.60	73.60	3.10	3.10	4.10	2.00	-	6.10
2004	16.20	16.50	29.50	39.70	6.10	75.30	2.60	2.60	3.30	2.00	-	5.20
2005	17.10	17.40	27.50	43.50	9.50	80.40	2.60	2.60	2.50	1.80	-	4.20
2006	17.70	18.00	26.80	45.70	3.40	75.90	2.50	2.50	1.90	1.50	-	3.40
2007	17.40	17.60	26.70	45.40	3.80	75.90	2.40	2.40	1.60	1.30	-	2.90
2008	16.60	16.90	25.40	48.10	4.20	77.70	2.00	2.00	1.10	1.10	-	2.20
2009	14.00	14.30	25.80	49.80	3.40	79.00	1.70	1.70	1.00	1.10	-	2.10
2010	11.70	11.90	23.10	54.50	4.20	81.90	1.30	1.30	0.70	1.20	-	1.90
2011	10.80	11.10	19.50	57.60	4.20	81.30	1.20	1.20	0.50	1.10	-	1.60
2012	9.20	9.50	17.40	60.30	4.00	81.70	1.00	1.00	0.50	1.00	-	1.50
2013	7.60	7.90	16.50	59.30	3.50	79.30	0.90	0.90	0.40	1.00	-	1.40
2014	5.50	5.70	14.60	62.00	2.10	78.80	0.70	0.70	0.30	0.90	-	1.20
2015	6.80	6.80	14.10	63.50	2.80	80.30	0.90	0.90	0.20	0.80	-	1.10
2016	6.70	6.70	13.90	64.60	3.10	81.60	0.90	0.90	0.20	0.80	-	1.00
2017	6.70	6.80	13.40	65.00	2.60	81.00	0.90	0.90	0.20	0.60	-	0.80
2018	6.90	6.90	13.50	65.70	2.90	82.10	0.90	0.90	0.20	0.50	-	0.70
2019	6.70	6.80	13.20	65.40	2.40	81.00	0.90	0.90	0.10	0.40	-	0.50
<b>2020</b>												
January	6.40	6.40	12.70	W	W	75.60	0.80	0.80	W	W	-	0.40
February	6.40	6.50	W	62.80	W	78.00	0.80	0.80	W	W	-	0.40
March	4.90	4.90	W	51.40	W	63.60	0.70	0.70	W	W	-	0.30
April	3.20	3.20	W	37.20	W	45.80	0.40	0.40	0.10	0.20	-	0.20
May	3.90	3.90	W	45.60	W	56.10	0.60	0.60	0.10	0.20	-	0.30
June	4.90	4.90	10.50	53.90	1.40	65.80	0.70	0.70	0.10	0.30	-	0.40
July	5.30	5.40	W	55.70	W	66.90	0.80	0.80	W	W	-	0.40
August	5.50	5.50	W	57.30	W	69.00	0.80	0.80	W	W	-	0.40
September	5.40	5.40	W	56.00	W	67.50	0.80	0.80	W	W	-	0.40
October	5.40	5.50	W	56.10	W	67.80	0.80	0.80	W	W	-	0.40
November	5.10	5.10	W	53.60	W	65.60	0.70	0.70	0.10	0.30	-	0.30
December	5.00	5.00	W	53.70	W	63.80	0.70	0.70	W	W	-	0.30
2020	5.10	5.10	10.50	53.70	1.20	65.40	0.70	0.70	0.10	0.30	-	0.40
<b>2021</b>												
January	4.80	4.80	W	51.70	W	61.50	0.70	0.70	W	W	-	0.30
February	4.90	4.90	W	51.70	W	62.50	0.70	0.70	W	W	-	0.30
March	5.40	5.40	W	57.00	W	68.40	0.80	0.80	W	W	-	0.30
April	5.60	5.60	W	58.80	W	70.40	0.80	0.80	W	W	-	0.30
May	3.50	3.50	W	61.60	W	74.80	0.60	0.60	W	W	-	0.40
June	W	W	W	64.40	W	79.60	W	W	W	W	-	0.40
July	W	W	W	64.10	W	79.10	W	W	W	W	-	0.40
August	W	W	W	64.60	W	79.30	W	W	W	W	-	0.40
September	W	W	W	63.00	W	77.70	W	W	W	W	-	0.40
October	W	W	W	62.70	W	76.40	W	W	W	W	-	0.40
November	W	W	W	62.70	W	76.40	W	W	W	W	-	0.30
December	W	W	W	62.00	W	75.90	W	W	W	W	-	0.30
2021	3.00	3.00	W	60.40	W	73.60	0.50	0.50	W	W	-	0.40
<b>2022</b>												
January	1.90	1.90	W	56.20	W	68.30	0.30	0.30	W	W	-	0.30
February	2.00	2.00	W	R62.30	W	R75.70	0.40	0.40	W	W	-	R0.30
March	2.00	2.00	W	62.70	W	75.50	0.30	0.30	W	W	-	0.30

See footnotes at end of table.



**Table 11. U.S. refiner reformulated motor gasoline volumes by grade and sales type (cont.)**

million gallons per day

Year month	Premium						All grades					
	Sales to end users		Sales for resale				Sales to end users		Sales for resale			
	Through retail outlets	Total[a]	DTW	Rack	Bulk	Total	Through retail outlets	Total[a]	DTW	Rack	Bulk	Total
1994	0.20	0.20	1.20	0.50	0.20	1.90	1.00	1.00	4.00	2.40	0.80	7.20
1995	3.10	3.20	12.00	W	W	18.90	14.00	14.40	40.10	25.90	6.60	72.60
1996	3.10	3.20	11.70	5.30	1.50	18.60	17.00	17.60	45.70	29.20	9.60	84.50
1997	3.40	3.50	11.50	5.30	1.50	18.20	20.30	21.00	47.40	30.10	9.10	86.60
1998	3.80	3.90	12.20	W	1.60	19.80	21.80	22.20	48.20	32.00	9.90	90.10
1999	3.40	3.50	11.40	6.30	1.90	19.60	21.50	22.00	48.20	35.60	11.50	95.20
2000	3.00	3.10	9.60	5.40	1.90	16.80	21.90	22.40	47.90	37.00	10.40	95.20
2001	3.20	3.20	9.20	5.40	1.10	15.70	22.70	23.30	47.70	37.60	10.00	95.30
2002	3.40	3.50	9.50	5.60	1.10	16.30	23.60	24.10	48.20	38.00	9.30	95.60
2003	3.50	3.60	8.50	5.90	1.00	15.30	24.20	24.70	43.50	43.00	8.60	95.10
2004	3.10	3.10	7.40	6.00	0.60	14.10	21.90	22.30	40.20	47.70	6.70	94.60
2005	2.80	2.80	6.50	6.00	1.20	13.60	22.60	22.90	36.40	51.20	10.60	98.30
2006	2.70	2.70	5.90	5.90	0.70	12.50	22.90	23.20	34.60	53.10	4.10	91.80
2007	2.60	2.70	5.80	5.90	0.40	12.10	22.40	22.70	34.00	52.60	4.30	90.90
2008	2.40	2.40	5.00	5.40	0.40	10.80	21.00	21.30	31.50	54.60	4.60	90.80
2009	2.30	2.30	5.30	6.10	0.30	11.80	17.90	18.30	32.10	57.10	3.70	92.90
2010	1.90	1.90	4.90	7.40	0.40	12.70	14.90	15.20	28.80	63.10	4.70	96.50
2011	1.70	1.70	3.90	7.70	0.20	11.80	13.70	13.90	23.90	66.40	4.40	94.70
2012	1.50	1.50	3.50	8.40	0.30	12.10	11.70	12.00	21.40	69.70	4.30	95.40
2013	1.40	1.40	3.50	8.70	0.20	12.40	9.90	10.20	20.50	69.00	3.70	93.10
2014	1.20	1.20	3.50	9.40	0.20	13.00	7.50	7.70	18.40	72.30	2.30	93.00
2015	1.50	1.50	3.80	10.40	0.20	14.40	9.20	9.20	18.10	74.70	3.00	95.80
2016	1.60	1.60	4.10	11.10	0.30	15.50	9.20	9.20	18.20	76.50	3.40	98.10
2017	1.50	1.50	4.10	11.20	0.40	15.70	9.20	9.20	17.60	76.90	3.00	97.50
2018	1.50	1.50	4.00	11.10	0.40	15.50	9.30	9.30	17.60	77.30	3.30	98.20
2019	1.50	1.50	3.90	11.40	0.40	15.60	9.10	9.10	17.20	77.20	2.80	97.20
<b>2020</b>												
January	1.40	1.40	3.70	10.80	0.40	14.90	8.60	8.70	W	72.10	W	90.90
February	1.40	1.40	3.90	W	W	15.50	8.70	8.80	W	74.40	W	94.00
March	1.10	1.10	3.10	W	W	12.80	6.70	6.70	W	61.10	W	76.80
April	0.80	0.80	W	6.60	W	9.10	4.40	4.40	9.50	44.00	1.70	55.10
May	1.00	1.00	W	8.70	W	12.00	5.50	5.50	12.30	54.60	1.50	68.40
June	1.20	1.20	3.40	10.60	0.30	14.30	6.80	6.90	14.00	64.80	1.70	80.50
July	1.30	1.30	3.50	W	W	14.80	7.40	7.50	W	67.10	W	82.10
August	1.40	1.40	3.60	W	W	15.30	7.60	7.60	W	69.20	W	84.70
September	1.40	1.40	3.60	W	W	15.50	7.60	7.60	W	68.00	W	83.40
October	1.40	1.40	3.70	W	W	16.00	7.60	7.70	W	67.80	W	84.10
November	1.30	1.30	W	11.00	W	15.50	7.20	7.20	13.80	64.90	2.70	81.40
December	1.30	1.30	3.40	W	W	14.10	7.10	7.10	W	64.50	W	78.20
<b>2020</b>	1.30	1.30	3.40	10.40	0.40	14.10	7.10	7.10	14.00	64.40	1.60	79.90
<b>2021</b>												
January	1.20	1.20	3.30	W	W	13.40	6.70	6.80	W	62.00	W	75.30
February	1.20	1.20	3.50	W	W	13.70	6.90	6.90	W	62.10	W	76.60
March	1.30	1.30	3.60	W	W	14.70	7.50	7.50	W	68.20	W	83.30
April	1.40	1.40	3.80	W	W	15.70	7.80	7.80	W	70.80	W	86.40
May	1.00	1.00	3.90	W	W	16.30	5.00	5.10	W	74.10	W	91.50
June	W	W	4.10	W	W	16.90	W	W	W	77.30	W	96.90
July	W	W	4.10	W	W	17.00	W	W	W	76.90	W	96.50
August	W	W	4.10	W	W	16.80	W	W	W	77.50	W	96.50
September	W	W	4.10	W	W	16.70	W	W	W	75.70	W	94.70
October	W	W	4.00	W	W	16.00	W	W	W	75.00	W	92.80
November	W	W	3.90	W	W	15.70	W	W	W	74.70	W	92.50
December	W	W	3.70	W	W	15.50	W	W	W	73.80	W	91.60
<b>2021</b>	0.90	0.90	3.80	W	W	15.70	4.30	4.40	W	72.40	W	89.60
<b>2022</b>												
January	0.60	0.60	3.50	W	W	13.90	2.80	2.90	W	66.80	W	82.50
February	0.60	0.60	3.70	W	W	15.60	3.00	3.00	W	R73.90	W	R91.70
March	0.60	0.60	3.20	W	W	13.80	2.90	2.90	W	73.50	W	89.60

NA = Not available.

- = No data reported.

W = Withheld to avoid disclosure of individual company data.

[a] Includes sales through retail outlets as well as all direct sales to end users that were not made through company-operated retail outlets, e.g., sales to agricultural customers, commercial sales, and industrial sales.

Notes: - Values shown for the current month are preliminary. Values shown for previous months are revised. Data through 2021 are final. Totals may not equal the sum of the components due to rounding.

Data source: U.S. Energy Information Administration Form EIA-782A, Refiners'/Gas Plant Operators' Monthly Petroleum Product Sales Report.

**Table 16. U.S. refiner residual fuel oil prices**

dollars per gallon excluding taxes

Year month	Sulfur less than or equal to 1%		Sulfur greater than 1%		Average	
	Sales to end users	Sales for resale	Sales to end users	Sales for resale	Sales to end users	Sales for resale
1994	0.40	0.34	0.33	0.28	0.35	0.31
1995	0.43	0.38	0.37	0.33	0.39	0.36
1996	0.52	0.45	0.43	0.38	0.45	0.42
1997	0.48	0.41	0.40	0.36	0.42	0.38
1998	0.35	0.29	0.28	0.26	0.30	0.28
1999	0.40	0.38	0.36	0.32	0.37	0.35
2000	0.70	0.62	0.56	0.51	0.60	0.56
2001	0.64	0.52	0.49	0.42	0.53	0.47
2002	0.64	0.54	0.54	0.50	0.56	0.53
2003	0.80	0.72	0.65	0.58	0.69	0.66
2004	0.83	0.76	0.69	0.60	0.73	0.68
2005	1.16	1.11	0.97	0.84	1.04	0.97
2006	1.34	1.20	1.17	1.08	1.21	1.13
2007	1.43	1.40	1.35	1.31	1.37	1.35
2008	2.14	1.91	1.88	1.84	1.96	1.86
2009	1.41	1.33	1.30	1.34	1.34	1.34
2010	1.92	1.75	1.61	1.67	1.71	1.69
2011	2.73	2.38	2.25	2.31	2.40	2.33
2012	3.02	2.54	2.43	2.42	2.59	2.45
2013	2.88	2.36	2.35	2.24	2.48	2.27
2014	2.69	2.15	2.22	1.99	2.32	2.04
2015	1.52	0.97	1.22	0.99	1.28	0.99
2016	1.13	0.73	0.89	0.74	0.94	0.74
2017	W	1.11	1.23	1.11	1.28	1.11
2018	W	1.39	1.58	1.46	1.66	1.46
2019	W	1.64	1.51	1.39	1.58	1.42
<b>2020</b>						
January	W	1.78	1.63	1.52	1.93	1.67
February	W	1.67	1.55	1.33	1.73	1.54
March	W	1.18	1.14	0.99	1.37	1.12
April	W	0.79	0.94	0.63	0.97	0.73
May	W	0.79	0.72	NA	0.81	0.77
June	W	1.01	0.89	1.01	0.94	1.01
July	W	1.15	0.98	1.08	1.07	1.13
August	W	1.18	1.02	1.06	1.22	1.13
September	W	1.09	1.03	1.00	1.20	1.06
October	W	1.07	1.07	0.99	1.15	1.04
November	W	1.16	1.06	1.09	1.14	1.14
December	W	1.35	1.19	1.26	1.29	1.32
<b>2020</b>	W	1.18	1.09	1.06	1.24	1.14
<b>2021</b>						
January	W	1.49	1.34	1.35	1.46	1.43
February	W	1.58	1.46	1.42	1.61	1.51
March	W	1.78	1.59	1.55	1.76	1.68
April	W	1.78	1.55	1.53	1.75	1.68
May	W	1.82	1.55	1.62	1.76	1.73
June	W	1.90	1.60	1.65	1.86	1.78
July	W	1.85	1.72	1.76	1.96	1.81
August	W	1.84	1.66	1.67	1.90	1.77
September	W	1.91	1.74	1.76	1.95	1.84
October	W	2.12	1.87	1.96	2.09	2.06
November	W	2.06	1.82	1.83	2.14	1.92
December	W	1.94	1.72	1.76	2.09	1.86
<b>2021</b>	W	1.84	1.65	1.66	1.86	1.77
<b>2022</b>						
January	2.34	2.21	1.87	1.96	2.16	2.08
February	NA	2.41	R2.10	2.08	R2.43	2.27
March	NA	2.93	2.47	2.42	2.86	2.68

NA = Not available.

R = Revised data.

Notes: - Values shown for the current month are preliminary. Values shown for previous months may be revised. Data through 2021 are final.

Data source: U.S. Energy Information Administration Form EIA-782A, Refiners'/Gas Plant Operators' Monthly Petroleum Product Sales Report.

**Table 17. U.S. refiner residual fuel oil volumes**

million gallons per day

Year month	Sulfur less than or equal to 1%		Sulfur greater than 1%		Total	
	Sales to end users	Sales for resale	Sales to end users	Sales for resale	Sales to end users	Sales for resale
1994	4.20	6.60	9.30	6.20	13.50	12.80
1995	2.90	7.70	8.70	5.90	11.60	13.60
1996	3.10	6.30	9.80	7.40	12.90	13.80
1997	3.20	4.80	10.30	6.70	13.40	11.50
1998	3.90	5.70	10.50	9.60	14.40	15.40
1999	3.90	5.30	10.00	6.20	13.90	11.50
2000	3.30	4.90	9.80	5.60	13.10	10.50
2001	3.80	5.20	11.00	5.10	14.80	10.30
2002	2.70	5.10	7.80	3.70	10.40	8.80
2003	3.30	3.50	7.40	3.20	10.70	6.70
2004	3.40	2.90	6.80	3.00	10.20	5.90
2005	4.00	2.20	6.40	2.50	10.40	4.70
2006	2.80	2.80	7.60	3.60	10.40	6.50
2007	3.10	3.20	7.80	5.00	10.90	8.20
2008	2.50	2.90	5.90	6.60	8.40	9.50
2009	2.80	2.90	5.70	6.90	8.50	9.80
2010	2.40	2.60	5.20	8.10	7.60	10.70
2011	1.90	3.40	4.50	8.80	6.40	12.20
2012	1.50	2.10	4.00	6.80	5.50	8.80
2013	1.30	2.30	3.90	6.70	5.20	9.00
2014	1.00	2.40	3.60	5.60	4.60	8.00
2015	0.80	0.90	3.30	7.10	4.00	8.10
2016	0.80	0.80	3.30	7.60	4.20	8.40
2017	W	0.50	W	6.60	4.00	7.10
2018	W	0.40	W	7.20	3.50	7.60
2019	W	1.10	W	6.40	2.60	7.50
<b>2020</b>						
January	W	3.90	W	3.00	1.80	6.90
February	W	4.70	W	3.10	2.40	7.80
March	W	5.10	W	2.70	2.00	7.90
April	W	5.20	W	3.50	2.30	8.70
May	W	3.90	W	1.80	1.60	5.80
June	W	4.40	W	1.30	1.80	5.70
July	W	3.30	W	1.10	2.00	4.40
August	W	2.40	W	1.90	1.70	4.40
September	W	4.00	W	2.00	1.90	6.00
October	W	3.10	W	2.70	2.90	5.80
November	W	3.80	W	1.60	2.00	5.40
December	W	3.30	W	1.90	2.30	5.20
<b>2020</b>	W	3.90	W	2.20	2.10	6.10
<b>2021</b>						
January	W	2.80	W	2.10	2.10	4.90
February	W	2.80	W	2.10	2.00	4.90
March	W	3.90	W	3.00	2.10	7.00
April	W	3.00	W	1.90	2.00	4.90
May	W	2.70	W	2.30	1.80	5.10
June	W	3.00	W	2.80	2.20	5.80
July	W	2.50	W	1.60	1.80	4.10
August	W	3.00	W	1.90	2.00	4.90
September	W	2.60	W	2.30	1.80	4.90
October	W	3.90	W	2.10	2.00	6.00
November	W	2.20	W	3.40	2.20	5.60
December	1.30	3.90	0.70	3.20	1.90	7.20
<b>2021</b>	W	3.00	W	2.40	2.00	5.40
<b>2022</b>						
January	1.60	3.30	1.00	3.40	2.60	6.70
February	NA	3.90	R1.00	2.90	R2.50	6.80
March	NA	3.30	1.00	3.00	2.40	6.30

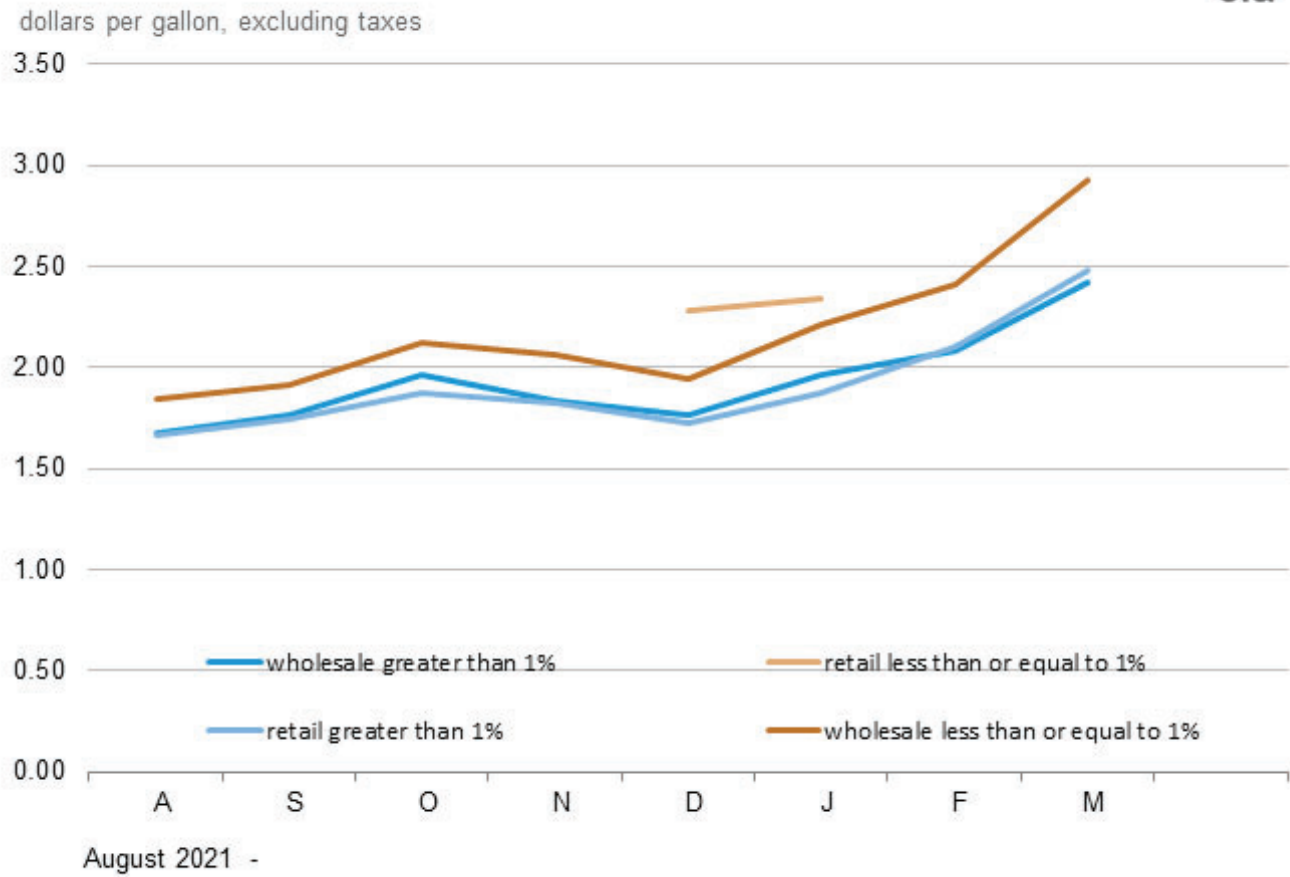
NA = Not available.

R = Revised data.

Notes: - Values shown for the current month are preliminary. Values shown for previous months are revised. Data through 2021 are final. Totals may not equal the sum of the components due to rounding.

Data source: U.S. Energy Information Administration Form EIA-782A, Refiners'/Gas Plant Operators' Monthly Petroleum Product Sales Report.

Figure 7. U.S. Refiner residual fuel oil prices



Source: U.S. Energy Information Administration, Form EIA-782A, *Refiners'/Gas Plant Operators' Monthly Petroleum Product Sales Report*.