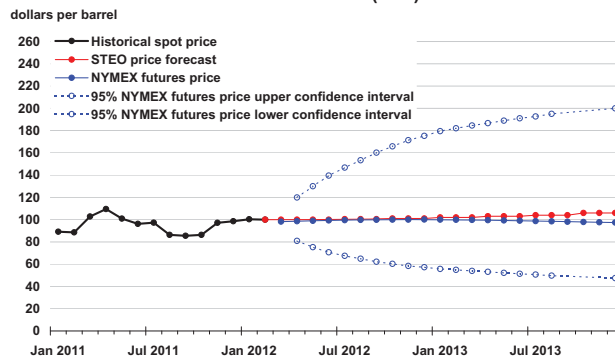




Short-Term Energy Outlook

Chart Gallery for February 2012

West Texas Intermediate (WTI) Crude Oil Price

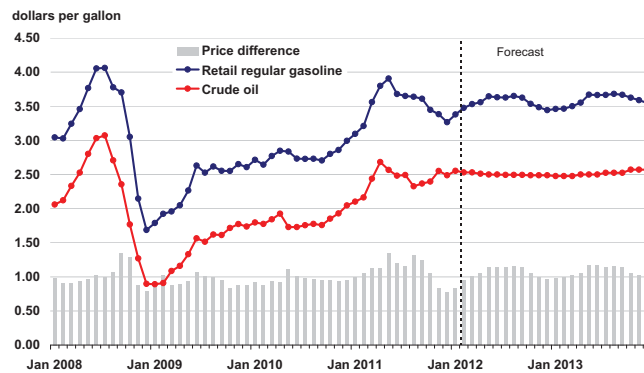


Note: Confidence interval derived from options market information for the 5 trading days ending February 2, 2012. Intervals not calculated for months with sparse trading in "near-the-money" options contracts.

Source: Short-Term Energy Outlook, February 2012



U.S. Gasoline and Crude Oil Prices

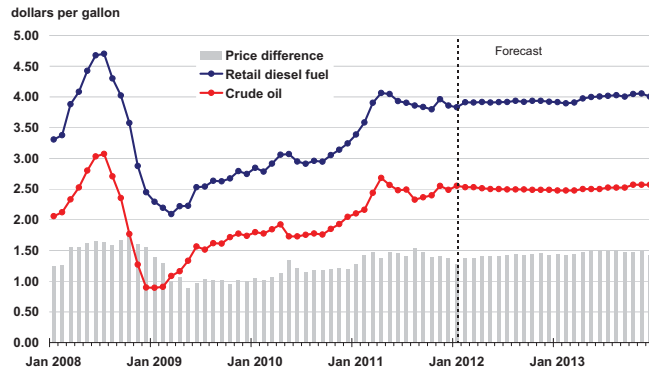


Crude oil price is average refiner acquisition cost. Retail prices include State and Federal taxes.

Source: Short-Term Energy Outlook, February 2012



U.S. Diesel Fuel and Crude Oil Prices

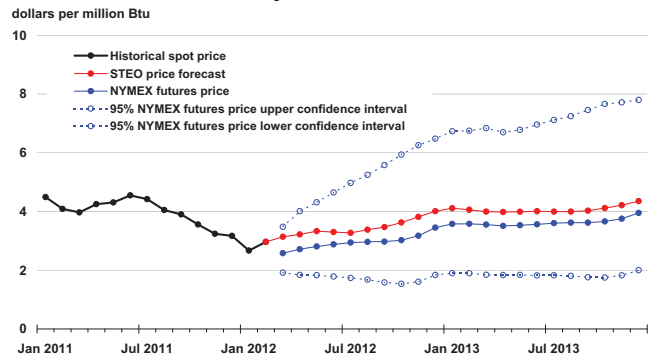


Crude oil price is average refiner acquisition cost. Retail prices include State and Federal taxes.

Source: Short-Term Energy Outlook, February 2012



Henry Hub Natural Gas Price

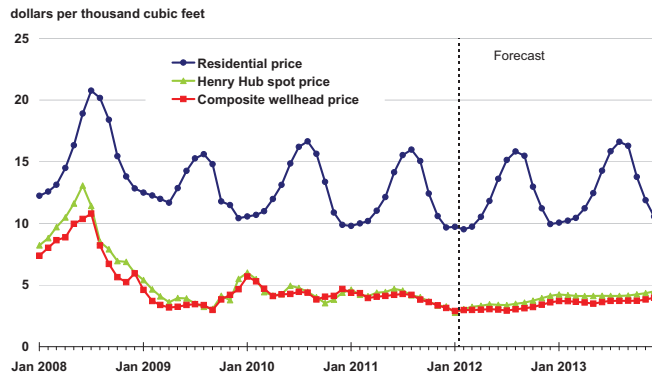


Note: Confidence interval derived from options market information for the 5 trading days ending February 2, 2012
Intervals not calculated for months with sparse trading in "near-the-money" options contracts

Source: Short-Term Energy Outlook, February 2012



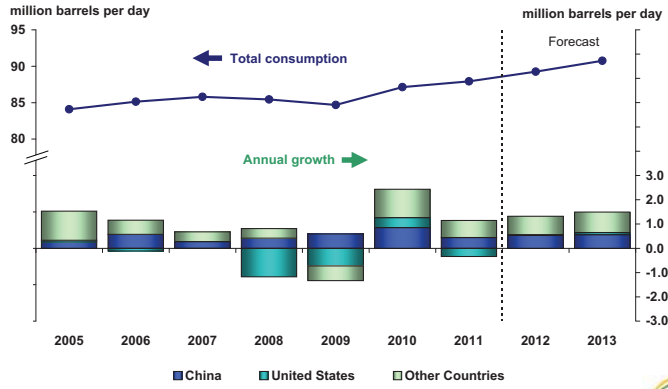
U.S. Natural Gas Prices



Source: Short-Term Energy Outlook, February 2012



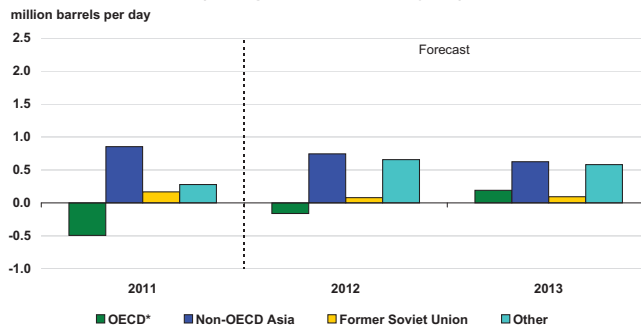
World Liquid Fuels Consumption



Source: Short-Term Energy Outlook, February 2012



World Liquid Fuels Consumption Growth (change from previous year)

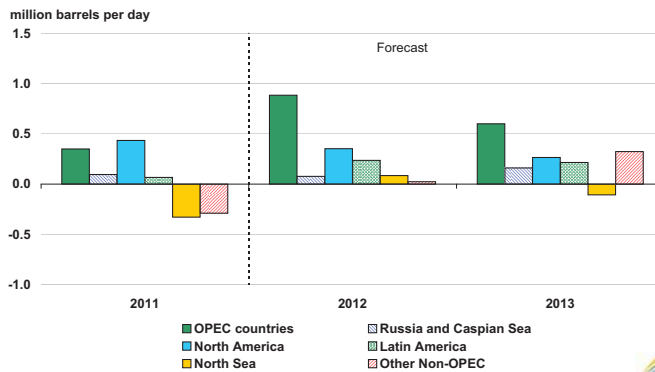


* Countries belonging to the Organization for Economic Cooperation and Development

Source: Short-Term Energy Outlook, February 2012



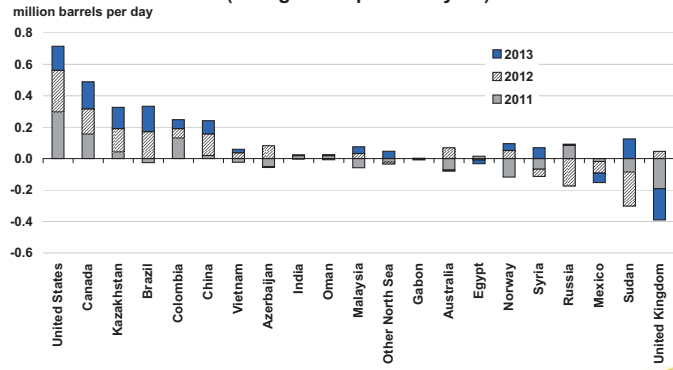
World Crude Oil and Liquid Fuels Production Growth (change from previous year)



Source: Short-Term Energy Outlook, February 2012



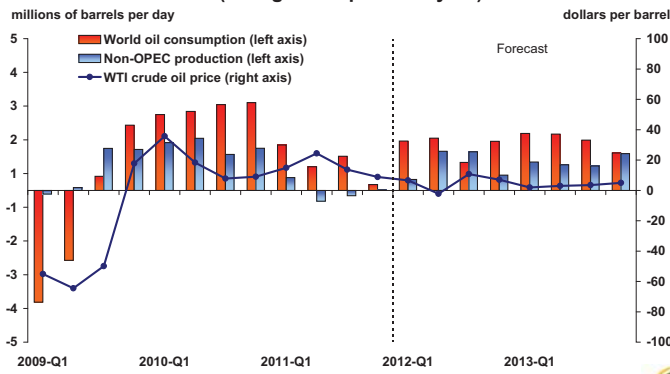
Non-OPEC Crude Oil and Liquid Fuels Production Growth (change from previous year)



Source: Short-Term Energy Outlook, February 2012



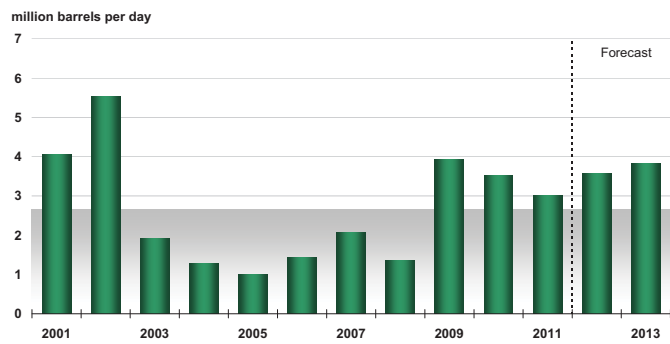
World Consumption and Non-OPEC Production (change from previous year)



Source: Short-Term Energy Outlook, February 2012



OPEC Surplus Crude Oil Production Capacity

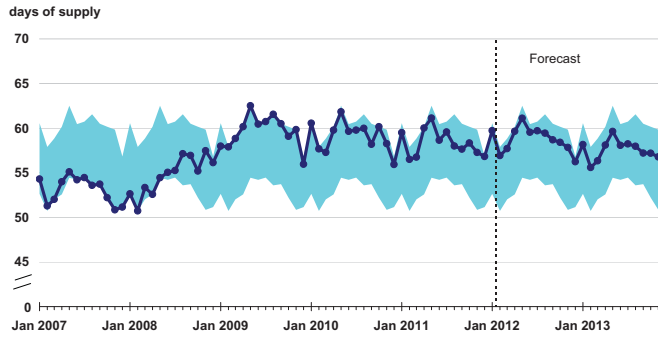


Note: Shaded area represents 2001-2011 average (2.6 million barrels per day)

Source: Short-Term Energy Outlook, February 2012



OECD Commercial Oil Stocks

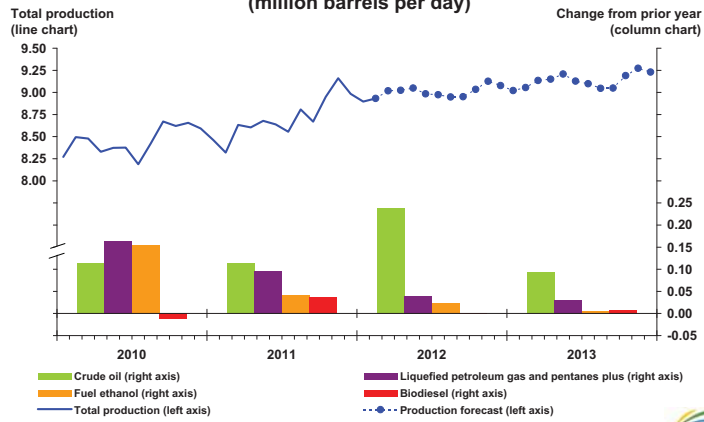


Note: Colored band represents the range between the minimum and maximum observed inventories from Jan. 2007 - Dec. 2011.

Source: Short-Term Energy Outlook, February 2012



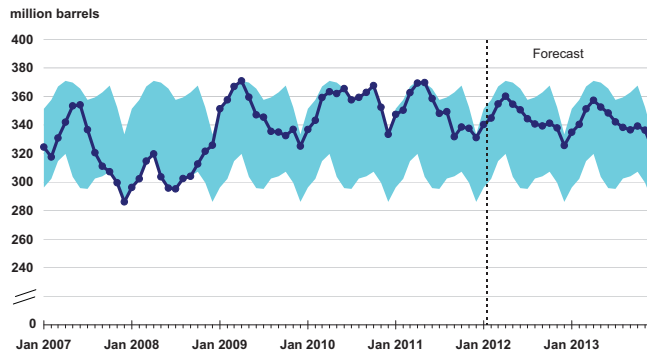
U.S. Crude Oil and Liquid Fuels Production (million barrels per day)



Source: Short-Term Energy Outlook, February 2012



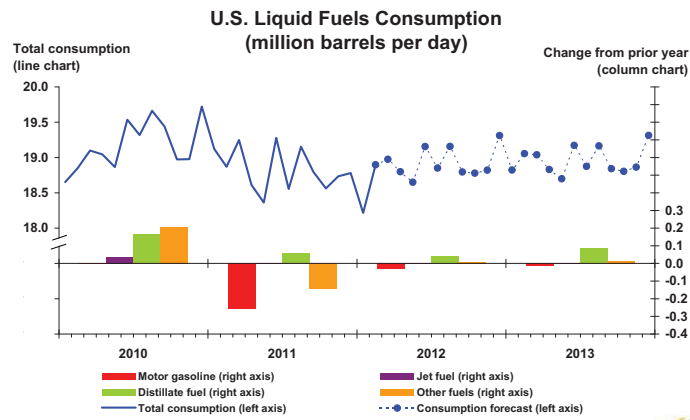
U.S. Crude Oil Stocks



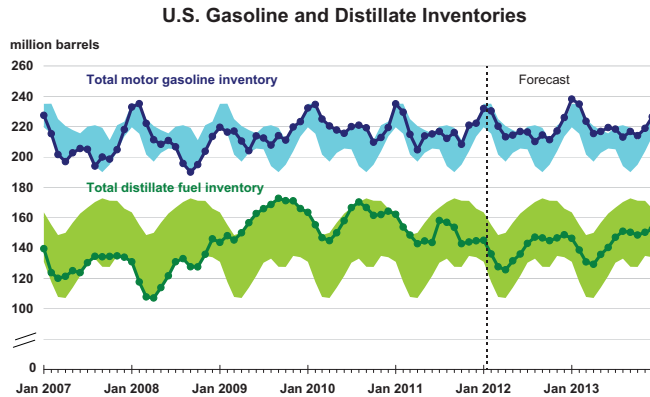
Note: Colored band around storage levels represents the range between the minimum and maximum from Jan. 2007 - Dec. 2011.

Source: Short-Term Energy Outlook, February 2012



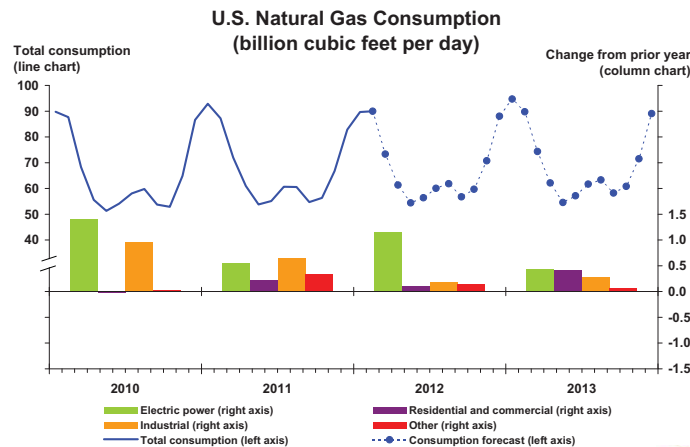


Source: Short-Term Energy Outlook, February 2012



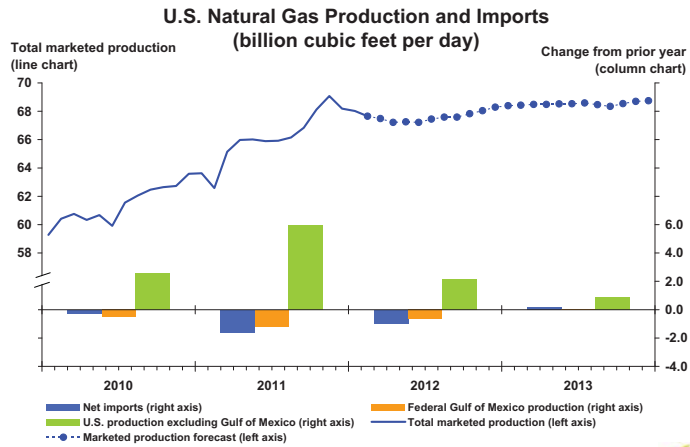
Note: Colored band around storage levels represents the range between the minimum and maximum from Jan. 2007 - Dec. 2011.

Source: Short-Term Energy Outlook, February 2012

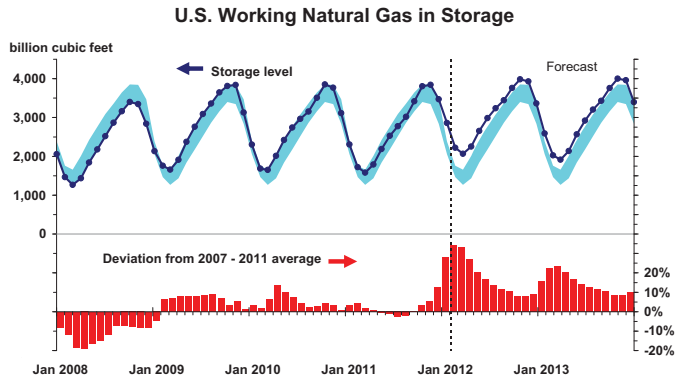


Source: Short-Term Energy Outlook, February 2012



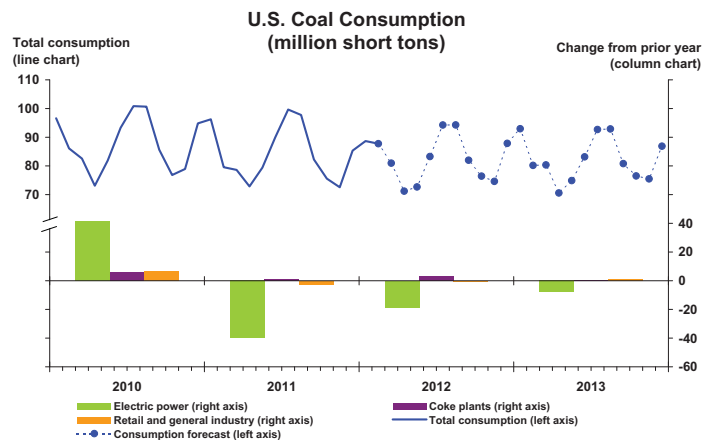


Source: Short-Term Energy Outlook, February 2012



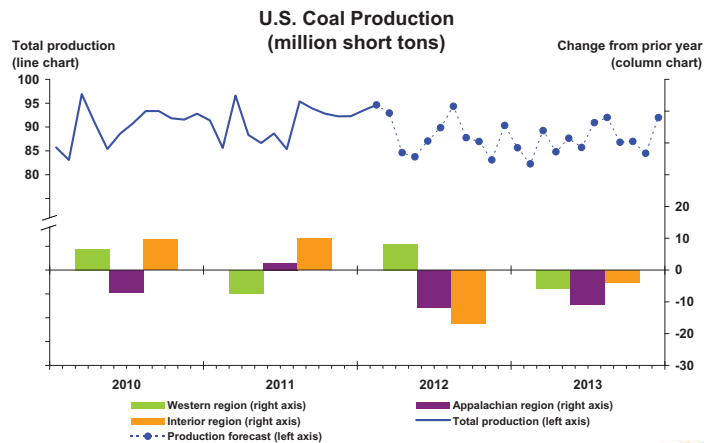
Note: Colored band around storage levels represents the range between the minimum and maximum from Jan. 2007 - Dec. 2011.

Source: Short-Term Energy Outlook, February 2012

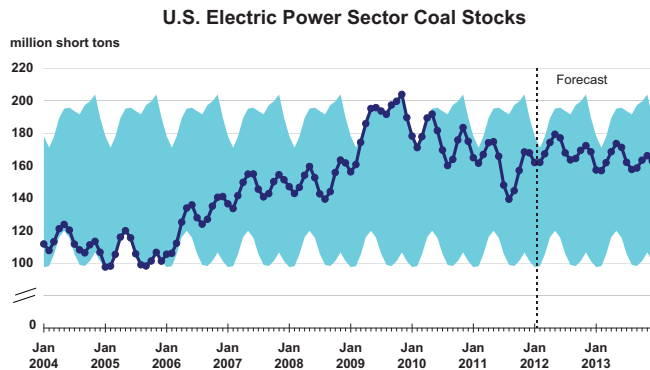


Source: Short-Term Energy Outlook, February 2012



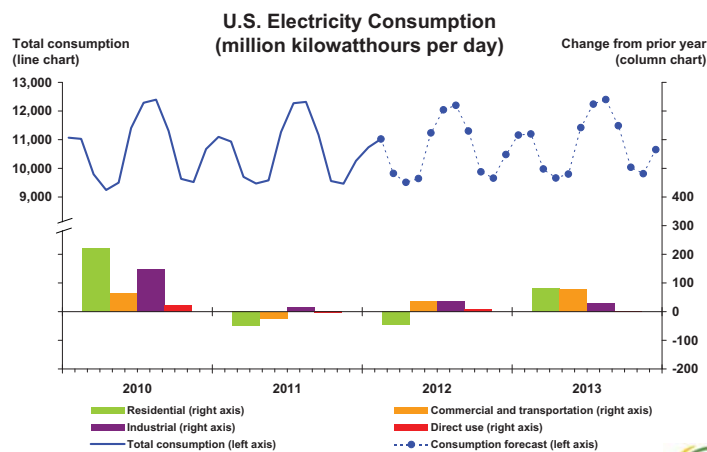


Source: Short-Term Energy Outlook, February 2012



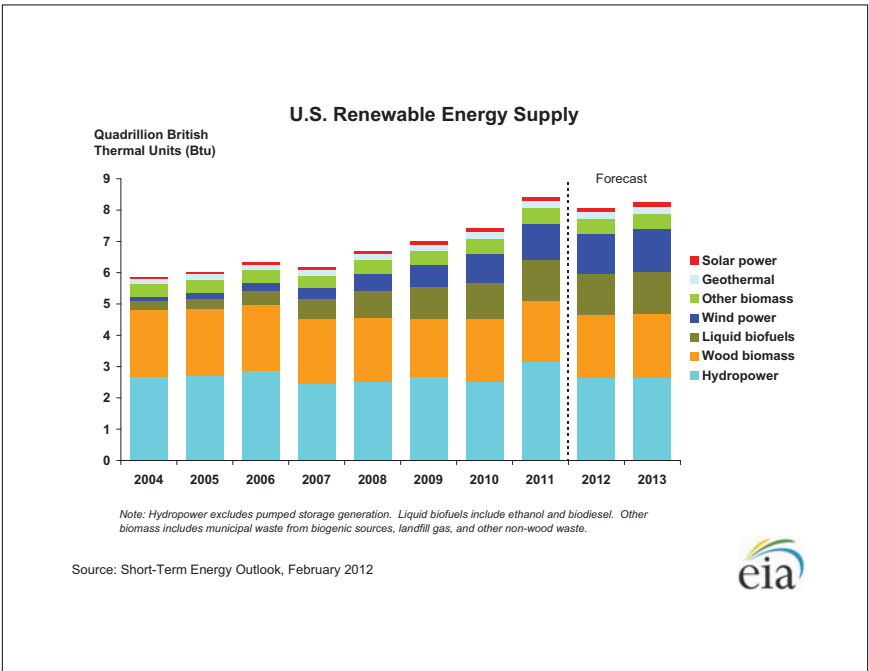
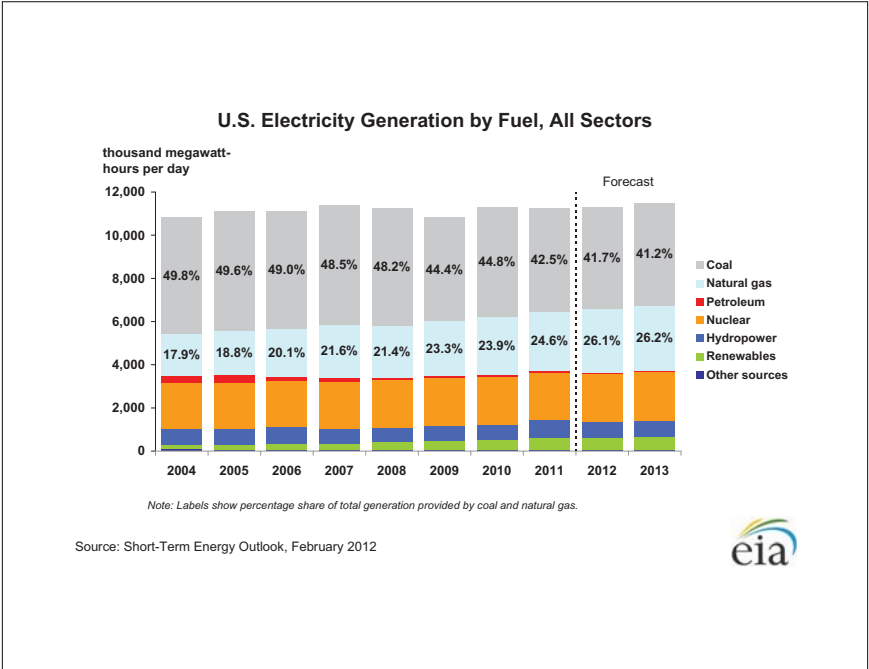
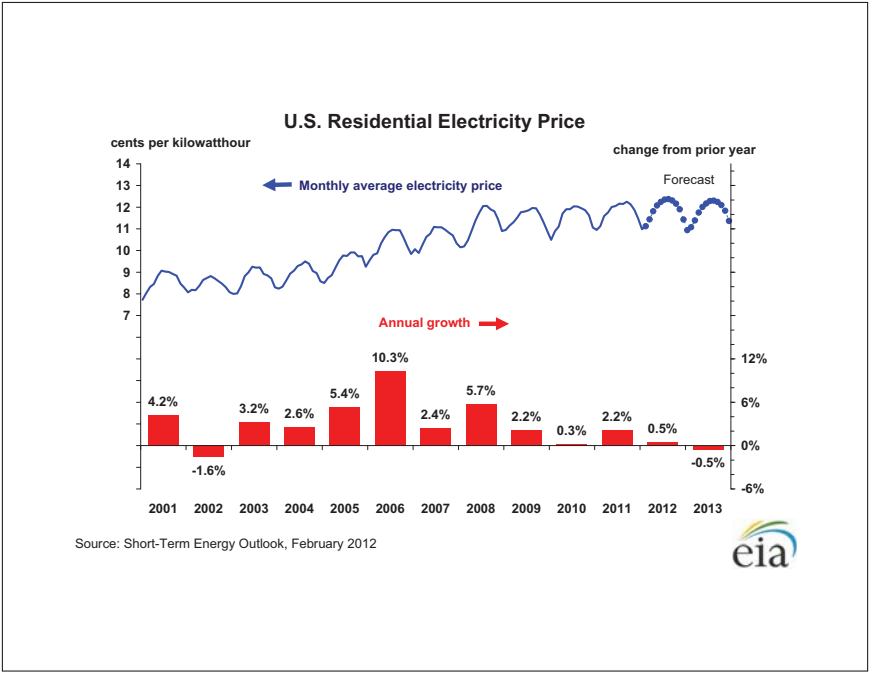
Note: Colored band around storage levels represents the range between the minimum and maximum from Jan. 2007 - Dec. 2011.

Source: Short-Term Energy Outlook, February 2012

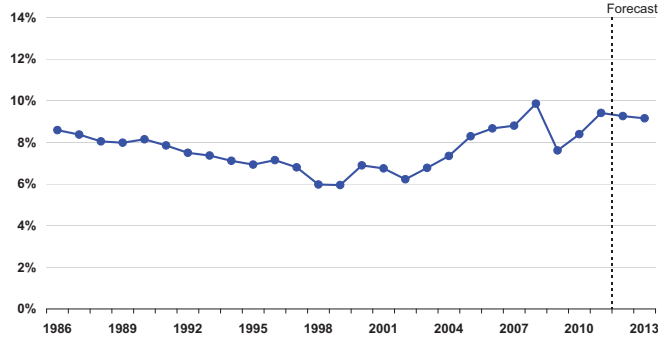


Source: Short-Term Energy Outlook, February 2012





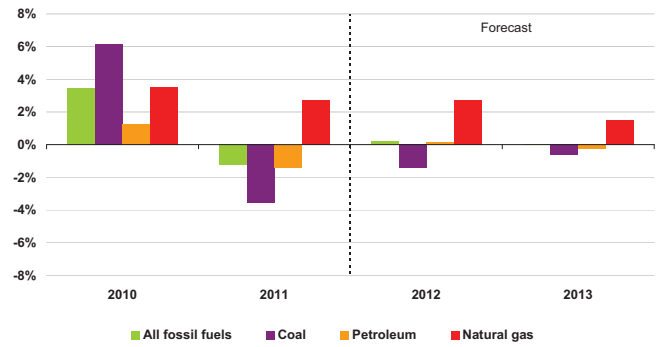
U.S. Annual Energy Expenditures Share of Gross Domestic Product



Source: Short-Term Energy Outlook, February 2012



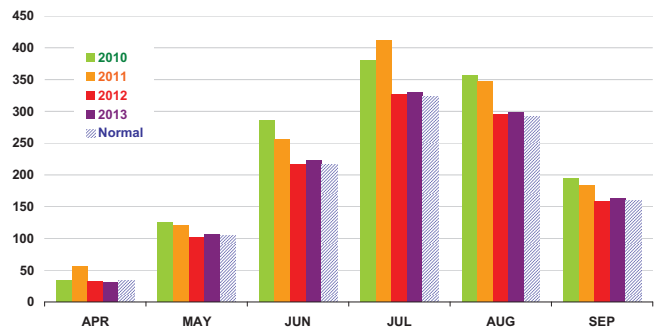
U.S. Energy-Related Carbon Dioxide Emissions Growth (change from previous year)



Source: Short-Term Energy Outlook, February 2012



U.S. Summer Cooling Degree-Days (population-weighted)

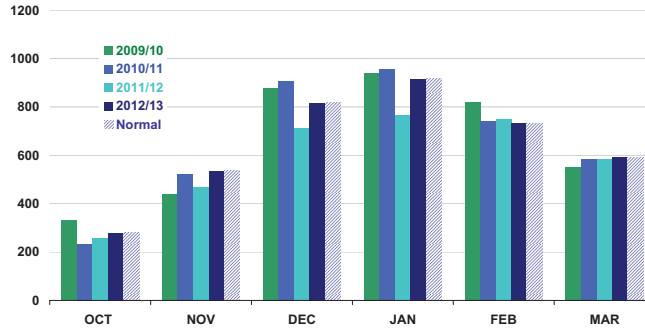


Data source: National Oceanic and Atmospheric Administration, National Weather Service

Source: Short-Term Energy Outlook, February 2012



U.S. Winter Heating Degree-Days (population-weighted)

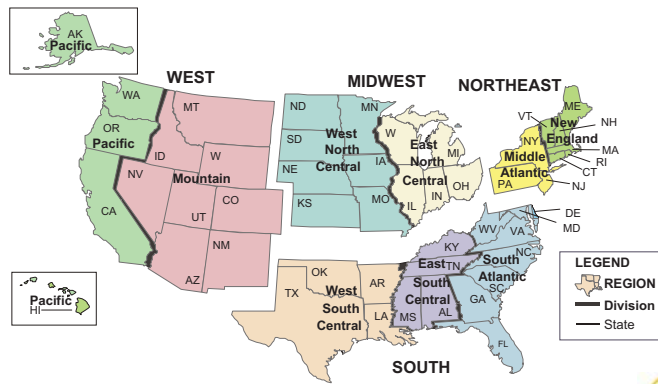


Data source: National Oceanic and Atmospheric Administration, National Weather Service

Source: Short-Term Energy Outlook, February 2012



U.S. Census Regions and Census Divisions



Source: Short-Term Energy Outlook, February 2012

