



Winter Fuels Outlook: 2002-2003

Selected Table and Figure Updates Based on the November 2002 Short-Term Energy Outlook

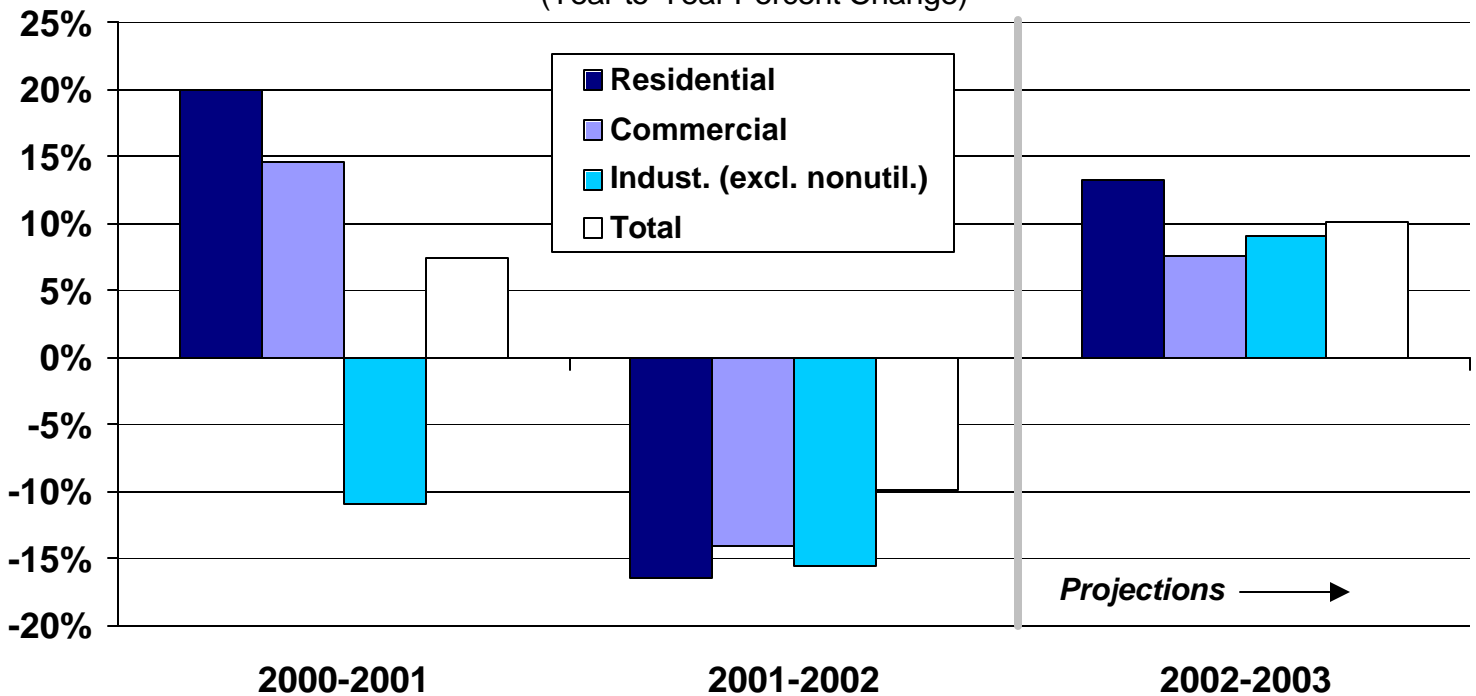
Table WF1. Illustrative Consumer Prices and Expenditures for Heating Fuels During the Winter

	1999-2000 Actual	2000-2001 Actual	2001-2002 Actual	2002-2003 Base Forecast
Natural Gas (Midwest)				
Consumption (mcf)	81.7	99.1	81.3	92.5
Avg. Price (\$/mcf)	6.69	9.54	7.34	8.06
Expenditures (\$)	546	945	597	746
Heating Oil (Northeast)				
Consumption (gals)	644	731	584	703
Avg. Price (\$/gal)	1.16	1.37	1.10	1.28
Expenditures (\$)	751	999	643	901
Propane (Midwest)				
Consumption (gals)	807	979	803	914
Avg. Price (\$/gal)	1.02	1.37	1.10	1.15
Expenditures (\$)	824	1344	887	1054

Notes: Consumption based on typical per household use for regions noted.

Prices shown are national average delivered-to-household prices.

Figure WF1. U.S. Winter Natural Gas Demand
 (Year-to-Year Percent Change)



(Energy Information Administration/Short-Term Energy Outlook -- October 2002)

Figure WF3. Natural Gas Spot Wellhead Prices: Base Case and 95% Confidence Intervals

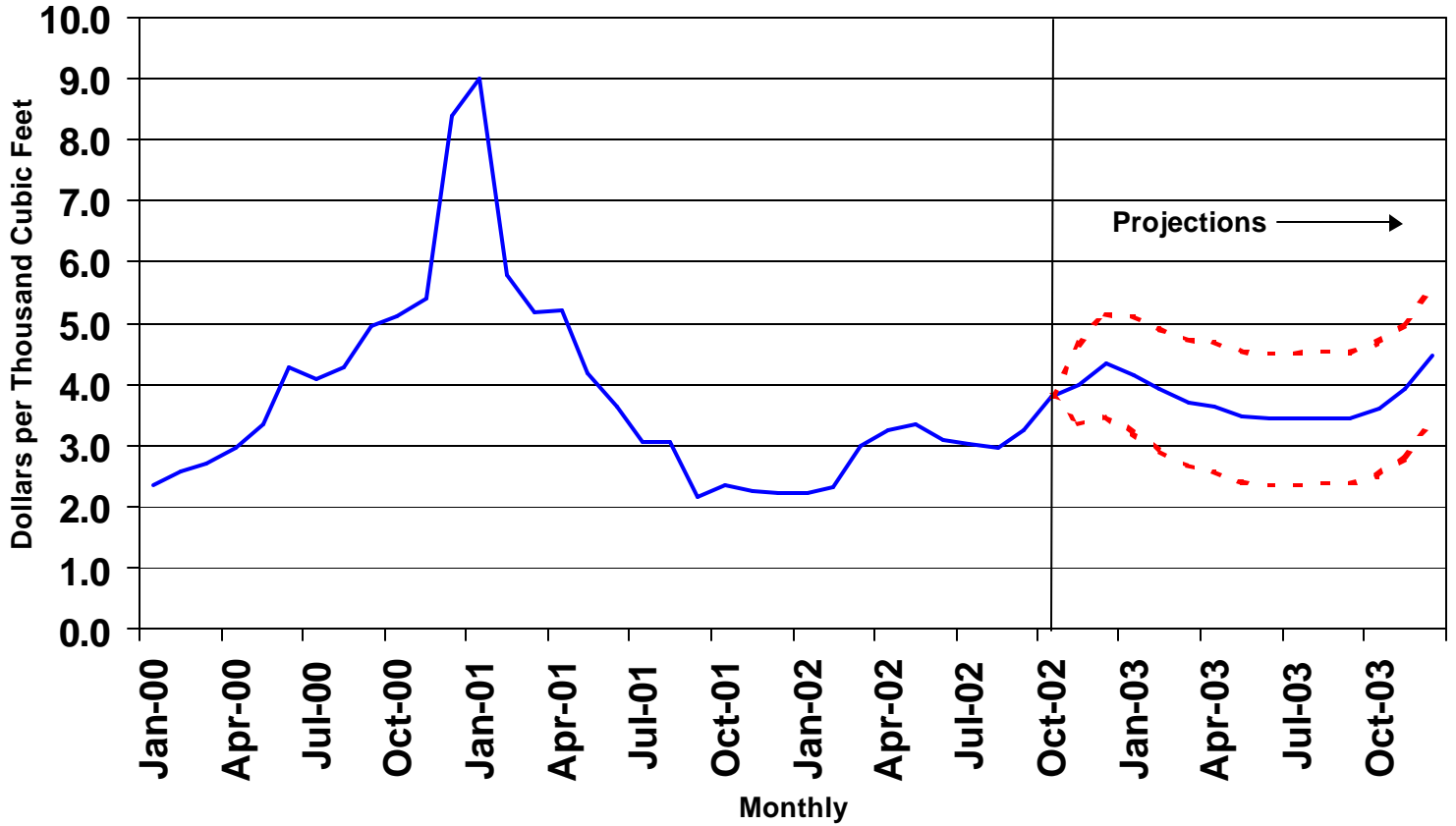


Figure WF5. WTI Crude Oil Price: Base Case and 95% Confidence Interval

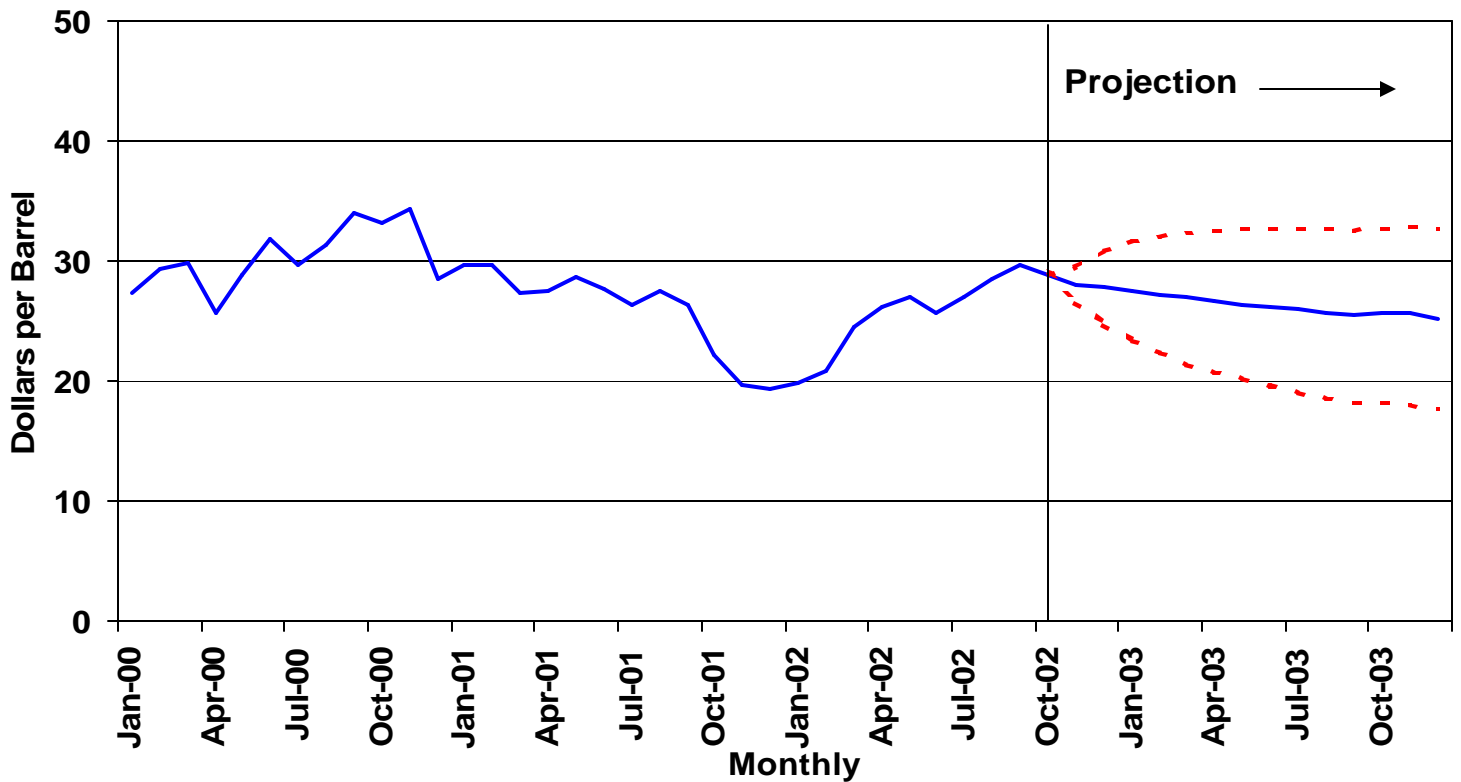


Table WF3. 2002-2003 Winter Weather Scenarios: Warm, Normal (Base) and Cold Cases**(Illustrative Household Heating Demand and Costs)**

	Warm	Base	Cold	% Diff. From Warm	Base Cold
Natural Gas (Midwest)					
Consumption (mcf)	83.2	92.5	101.7	-10.0%	10.0%
Avg. Price (\$/mcf)	7.97	8.06	8.16	-1.2%	1.2%
Expenditures (\$)	663	746	830	-11.1%	11.3%
Heating Oil (Northeast)					
Consumption (gals)	633	703	774	-10.0%	10.0%
Avg. Price (\$/gal)	1.21	1.28	1.35	-5.6%	5.6%
Expenditures (\$)	765	901	1047	-15.0%	16.2%
Propane (Midwest)					
Consumption (gals)	822	914	1005	-10.0%	10.0%
Avg. Price (\$/gal)	1.11	1.15	1.19	-3.6%	3.2%
Expenditures (\$)	914	1054	1197	-13.2%	13.5%

Note: Scenarios involve assumptions of 10% greater and 10% lower heating degree-days in all regions.